

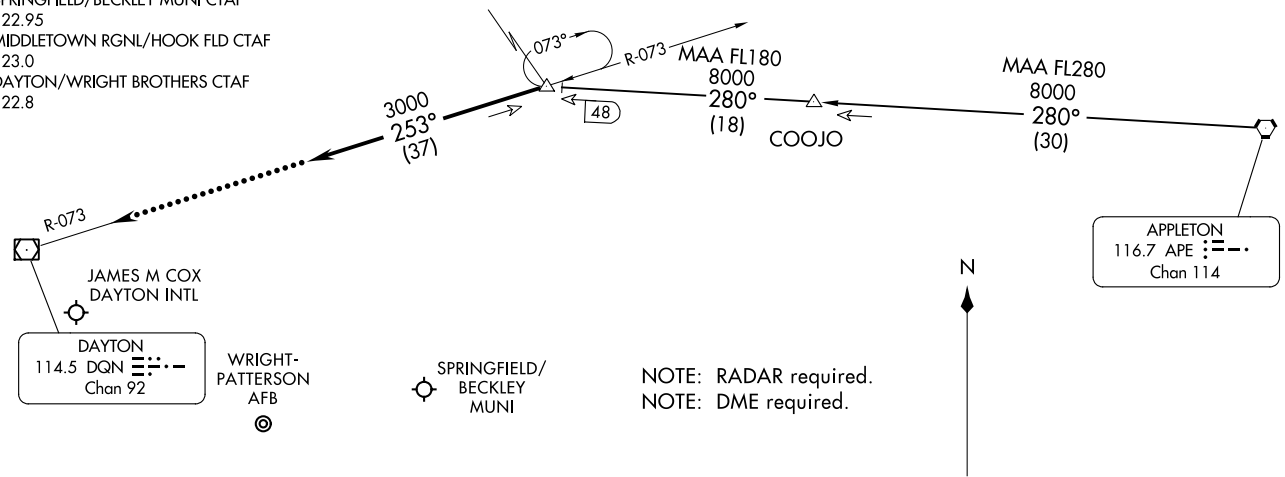
DANEI THREE ARRIVAL
(APE.DANEI3) 100CT19

(APE.DANEI3) 23334
DANEI THREE ARRIVAL

COLUMBUS APP CON
118.425 323.15
DAY ATIS
125.8
KFFO ATIS
124.475 269.9
SPRINGFIELD/BECKLEY MUNI CTAF
122.95
MIDDLETOWN RGNL/HOOK FLD CTAF
123.0
DAYTON/WRIGHT BROTHERS CTAF
122.8

DANEI VERTICAL NAVIGATION PLANNING

Expect 11000 250K



AL-107 (FAA)

DAYTON, OHIO

DAYTON
114.5 DQN Chan 92

WRIGHT-PATTERSON AFB

SPRINGFIELD/BECKLEY MUNI

DAYTON/WRIGHT BROTHERS

MIDDLETOWN RGNL/HOOK FLD

NOTE: Chart not to scale.

APPLETON TRANSITION (APE.DANEI3): From over APE VORTAC on APE R-280 to DANEI. Thence....

....From over DANEI on heading 253°. Expect RADAR vectors to final approach course.

LOST COMMUNICATIONS:
In the event of lost communications: At DANEI, proceed direct DQN VOR/DME maintain 3000' until DQN VOR/DME.

DAYTON, OHIO

(FLM.KEKEE4) 23334

KEKEE FOUR ARRIVAL

AL-107 (FAA)

DAYTON, OHIO

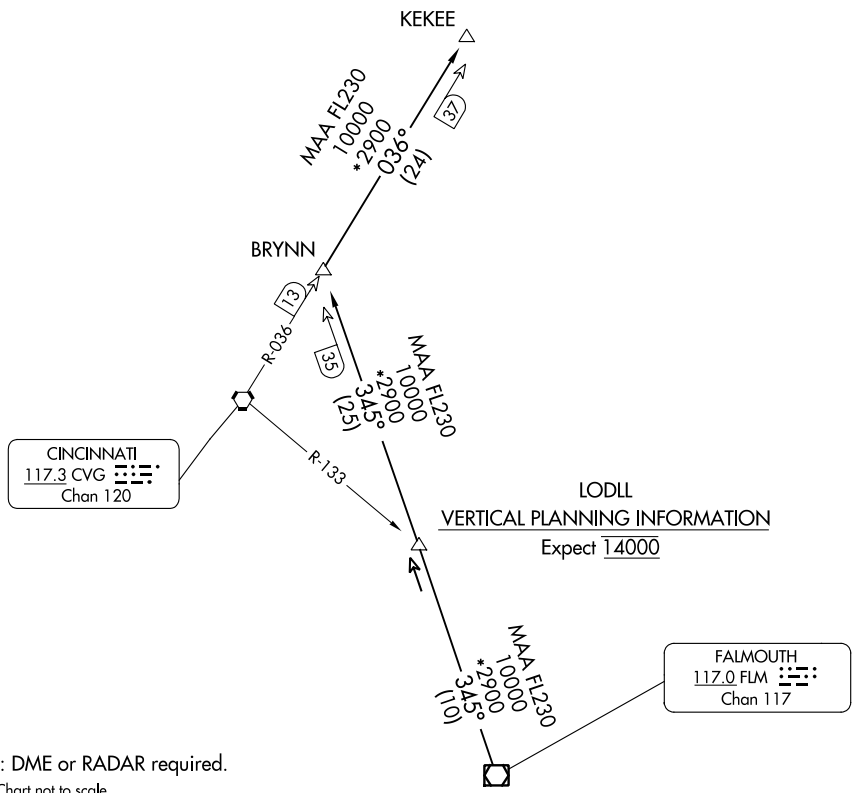
COLUMBUS APP CON
 118.425 323.15
 DAY ATIS
 125.8
 KFFO ATIS
 124.475 269.9
 SPRINGFIELD/BECKLEY MUNI CTAF
 122.95

DAYTON
 114.5 DQN
 Chan 92

JAMES M COX
 DAYTON INTL

SPRINGFIELD/BECKLEY
 MUNI

WRIGHT-PATTERSON
 AFB



EC-2, 22 FEB 2024 to 21 MAR 2024

EC-2, 22 FEB 2024 to 21 MAR 2024

KEKEE FOUR ARRIVAL

(FLM.KEKEE4) 10OCT19

DAYTON, OHIO

FALMOUTH TRANSITION (FLM.KEKEE4): From over FLM VOR/DME on FLM R-345 to BRYNN, then on CVG R-036 to KEKEE. Thence....

....from over KEKEE: Expect RADAR vectors to join final approach course.