

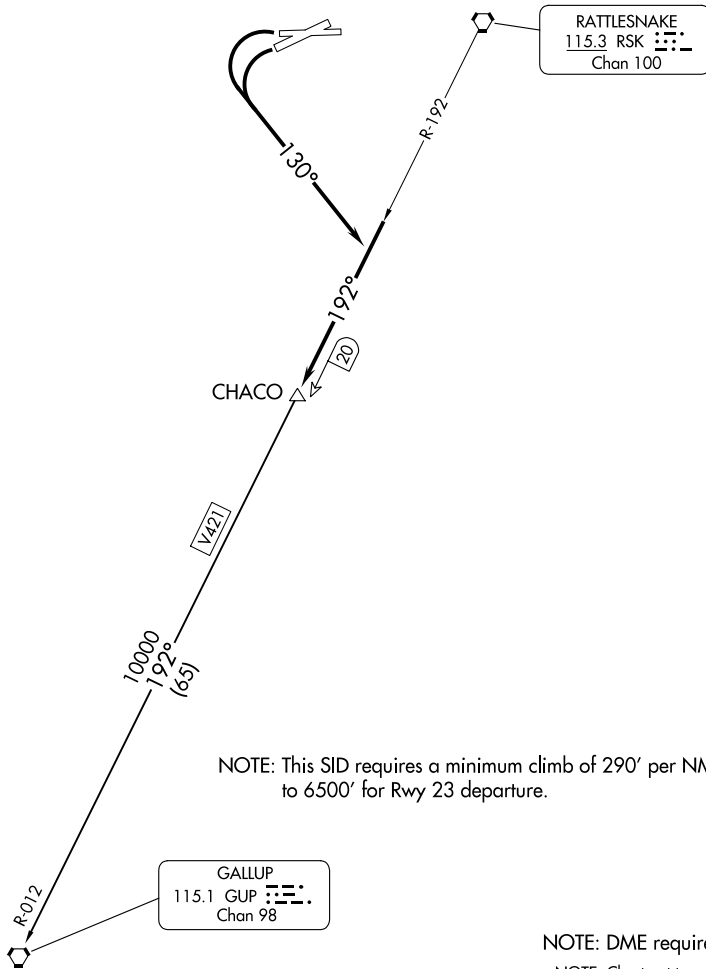
(CHACO1.CHACO) 23334

CHACO ONE DEPARTURE

AL-493 (FAA)

FOUR CORNERS RGNL (F'MIN)
FARMINGTON, NEW MEXICO

ATIS
127.15
GND CON
121.7
FARMINGTON TOWER
118.9 (CTAF) 257.8
DENVER CENTER
118.575 348.7
UNICOM
122.95



NOTE: This SID requires a minimum climb of 290' per NM to 6500' for Rwy 23 departure.

GALLUP
115.1 GUP
Chan 98

NOTE: DME required.

NOTE: Chart not to scale.

DEPARTURE ROUTE DESCRIPTION

Aircraft departing Runways 23 or 25 turn left heading 130° to intercept RSK R-192 to CHACO. Thence via (assigned route).

GALLUP TRANSITION (CHACO1.GUP): From over CHACO via RSK R-192 and GUP R-012 to GUP VORTAC.

CHACO ONE DEPARTURE

(CHACO1.CHACO) 05DEC96

FARMINGTON, NEW MEXICO
FOUR CORNERS RGNL (F'MIN)

SW-1, 22 FEB 2024 to 21 MAR 2024

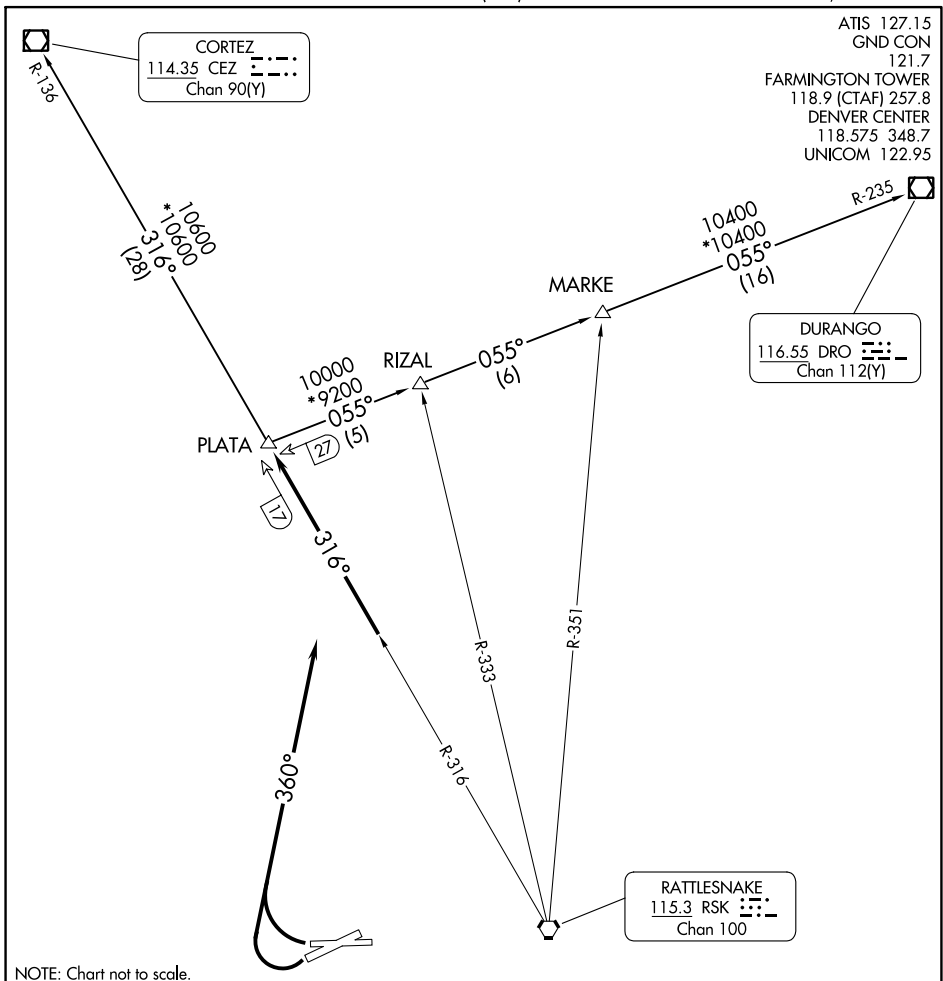
SW-1, 22 FEB 2024 to 21 MAR 2024

(PLATA1.PLATA) 23334

PLATA ONE DEPARTURE

AL-493 (FAA)

FOUR CORNERS RGNL (F'MN)
FARMINGTON, NEW MEXICO



SW-1, 22 FEB 2024 to 21 MAR 2024

SW-1, 22 FEB 2024 to 21 MAR 2024

NOTE: Chart not to scale.



DEPARTURE ROUTE DESCRIPTION

Aircraft departure Runways 23 and 25 turn right heading 360° to intercept RSK R-316 to PLATA INT. Thence via (transition) or (assigned route).

CORTEZ TRANSITION (PLATA1.CEZ): From over PLATA INT via RSK R-316 and CEZ R-136 to CEZ VOR/DME.

DURANGO TRANSITION (PLATA1.DRO): From over PLATA INT via DRO R-235 to DRO VOR/DME.

MARKE TRANSITION (PLATA1.MARKE): From over PLATA INT via DRO R-235 to MARKE INT.

RIZAL TRANSITION (PLATA1.RIZAL): From over PLATA INT via DRO R-235 to RIZAL INT.

PLATA ONE DEPARTURE

(PLATA1.PLATA) 05DEC96

FARMINGTON, NEW MEXICO
FOUR CORNERS RGNL (F'MN)