

LOC/DME I-FMN <b>111.9</b> Chan 56	APP CRS <b>256°</b>	Rwy Idg 6248	TDZE 5507	Apt Elev 5507
--	------------------------	-----------------	--------------	------------------

# ILS or LOC RWY 25

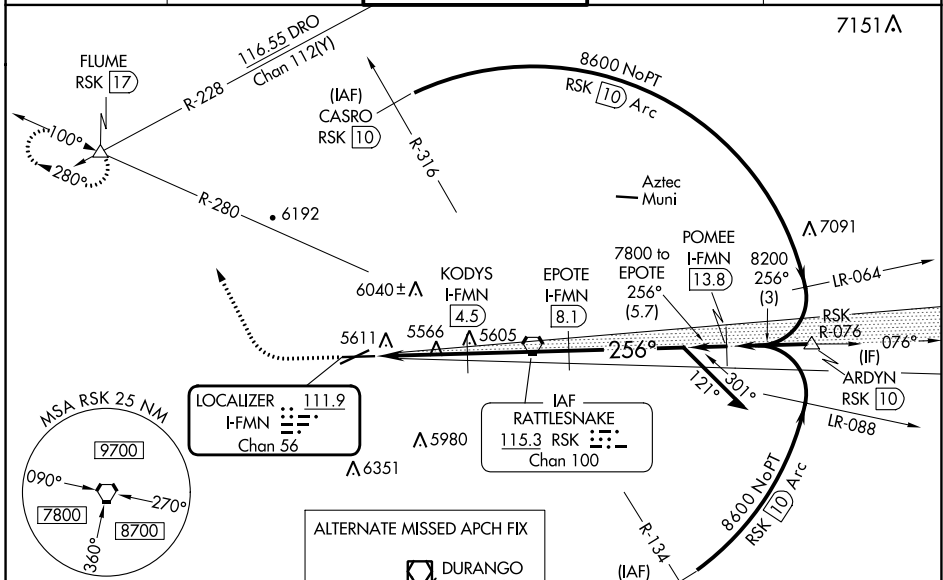
FOUR CORNERS RGNL (FMN)

**DME required.**

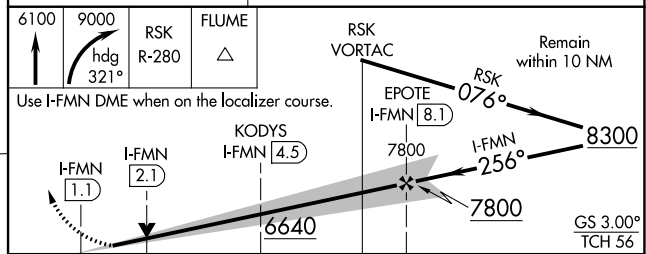
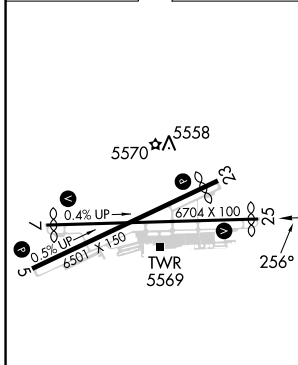
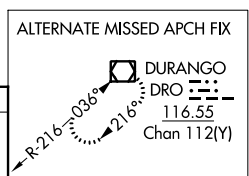
**VDP N/A** with Durango altimeter setting. Circling N/A for Cat D southeast of Rwy 5 and south of Rwy 25. When local altimeter setting not received, use Durango altimeter setting and increase S-ILS 25 DA to 5950 feet and all visibilities  $\frac{1}{2}$  SM; increase all MDAs 260 feet and S-LOC 25 visibility Cat C/D  $\frac{1}{2}$  SM, and Circling visibility Cat B  $\frac{1}{4}$  SM and Cat C  $\frac{1}{2}$  SM.

**MISSED APPROACH:** Climb to 6100 then climbing right turn to 9000 on heading 321° and on RSK VORTAC R-280 to FLUME INT and hold, continue climb-in-hold to 9000.

ATIS <b>127.15</b>	DENVER CENTER <b>118.575 348.7</b>	FARMINGTON TOWER* <b>118.9</b> (CTAF) <b>257.8</b>	GND CON <b>121.7</b>	UNICOM <b>122.95</b>
-----------------------	---------------------------------------	---	-------------------------	-------------------------



ELEV 5507	D	TDZE 5507
-----------	---	-----------



REIL Rws 23 and 25 MIRL Rws 5-23 and 7-25 FAF to MAP 7 NM					
Knots	60	90	120	150	180
Min:Sec	7:00	4:40	3:30	2:48	2:20
<input checked="" type="checkbox"/> CIRCLING	6020-1 513 (600-1)	6140-1 633 (700-1)	6380-2 $\frac{1}{2}$ 873 (900-2 $\frac{1}{2}$ )	6400-3 893 (900-3)	

WAAS CH <b>70714</b> <b>W23A</b>	APP CRS <b>233°</b>	Rwy Idg TDZE Apt Elev	<b>5590</b> <b>5505</b> <b>5507</b>
--	------------------------	-----------------------------	---

# RNAV (GPS) RWY 23

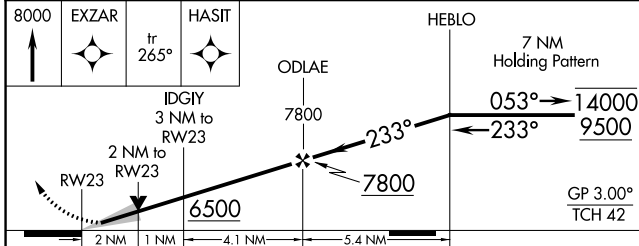
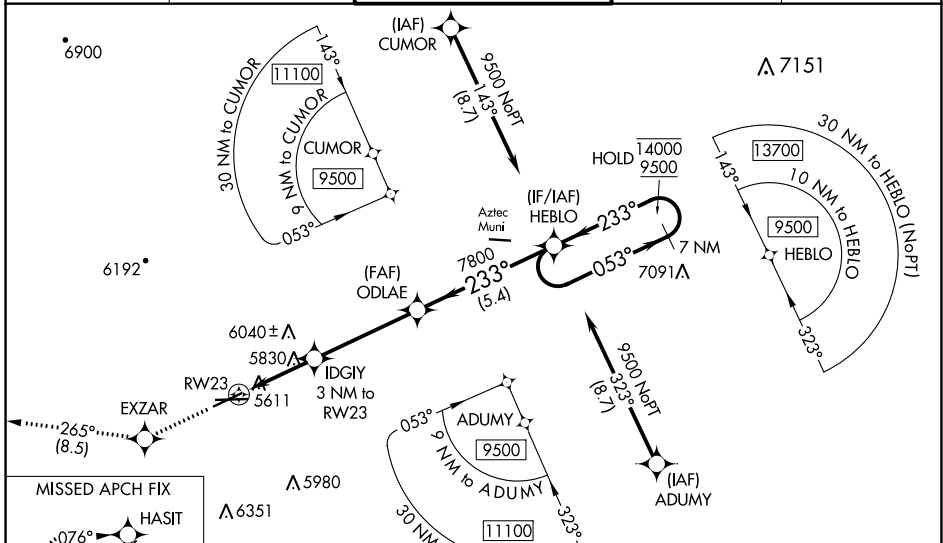
FOUR CORNERS RGNL (FMN)

RNP APCH - GPS.

**⚠** Baro-VNAV and VDP NA when using Durango altimeter setting. For uncompensated Baro-VNAV systems, LNAV/VNAV NA below -16°C or above 54°C. Circling NA for Cat D southeast of Rwy 5 and south of Rwy 25. When local altimeter setting not received, use Durango altimeter setting and increase LPV DA to 5998 feet and all visibilities  $\frac{1}{2}$  SM. Increase LNAV/VNAV DA to 6274 feet and all visibilities 1 SM. Increase all MDAs 260 feet and LNAV visibilities Cat B  $\frac{1}{4}$  SM, C/D  $\frac{1}{2}$  SM and Circling visibility Cat A/B  $\frac{1}{4}$  SM and Cat C  $\frac{1}{2}$  SM.

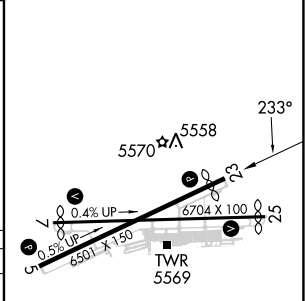
MISSED APPROACH: Climb to 8000 direct EXZAR and on track 265° to HASIT and hold.

ATIS <b>127.15</b>	DENVER CENTER <b>118.575 348.7</b>	FARMINGTON TOWER* <b>118.9 (CTAF) 257.8</b>	GND CON <b>121.7</b>	UNICOM <b>122.95</b>
-----------------------	---------------------------------------	--	-------------------------	-------------------------



ELEV 5507	TDZE 5505
-----------	-----------

CATEGORY	A	B	C	D
LPV DA	5755- $\frac{3}{4}$		250 (300- $\frac{3}{4}$ )	
LNAV/VNAV DA	6031-1 $\frac{1}{2}$		526 (600-1 $\frac{1}{2}$ )	
LNAV MDA	6080-1	575 (600-1)	6080-1 $\frac{5}{8}$	575 (600-1 $\frac{5}{8}$ )
CIRCLING	6100-1 593 (600-1)	6140-1 633 (700-1)	6380-2 $\frac{1}{2}$ 873 (900-2 $\frac{1}{2}$ )	6400-3 893 (900-3)



REIL Rws 23 and 25  
MIRL Rws 5-23 and 7-25

SW-1, 22 FEB 2024 to 21 MAR 2024

SW-1, 22 FEB 2024 to 21 MAR 2024

WAAS CH <b>97518</b> <b>W25A</b>	APP CRS <b>256°</b>	Rwy Idg TDZE Apt Elev	<b>6248</b> <b>5507</b> <b>5507</b>
--	------------------------	-----------------------------	---

# RNAV (GPS) RWY 25

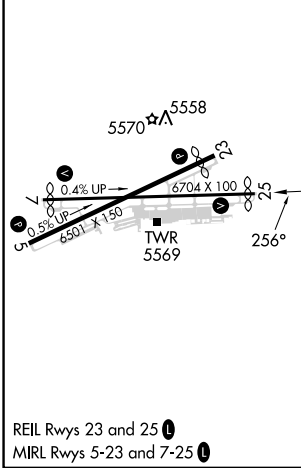
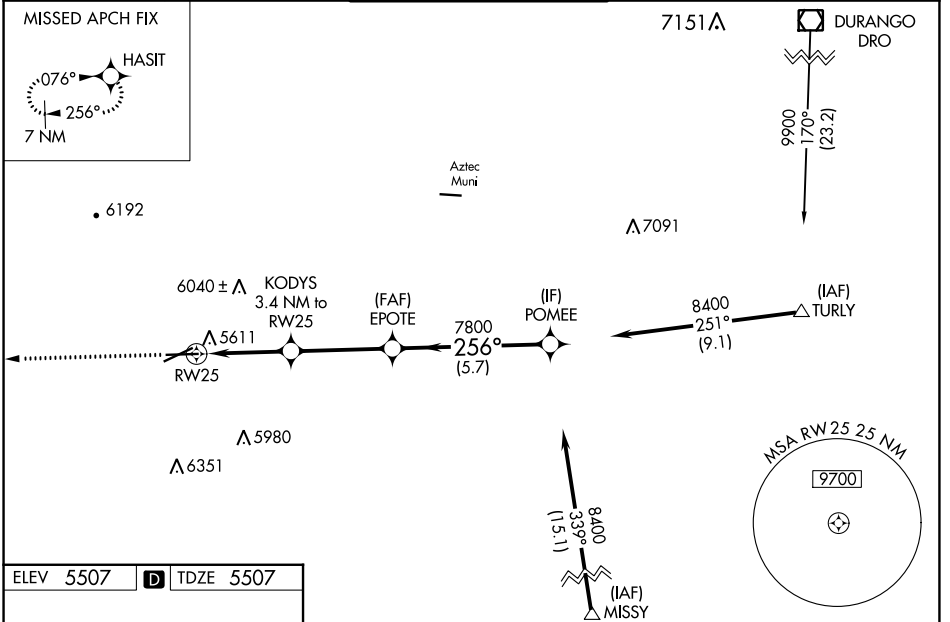
FOUR CORNERS RGNL (FMN)

RNP APCH-GPS.

**⚠** Baro-VNAV and VDP NA when using Durango altimeter setting. For uncompensated Baro-VNAV systems, LNAV/VNAV NA below -16°C or above 54°C. Circling NA for Cat D southeast of Rwy 5 and south of Rwy 25. When local altimeter setting not received, use Durango altimeter setting and increase LPV DA to 5950 feet and all visibilities  $\frac{3}{8}$  SM. Increase LNAV/VNAV DA to 6312 feet and all visibilities  $\frac{3}{8}$  SM. Increase all MDAs 260 feet and LNAV visibilities Cat C/D  $\frac{3}{4}$  SM, and Circling visibility Cat B  $\frac{1}{4}$  SM and Cat C  $\frac{1}{2}$  SM.

MISSED APPROACH: Climb to 8000 direct HASIT and hold.

ATIS <b>127.15</b>	DENVER CENTER <b>118.575 348.7</b>	FARMINGTON TOWER * <b>118.9 (CTAF) 257.8</b>	GND CON <b>121.7</b>	UNICOM <b>122.95</b>
-----------------------	---------------------------------------	---	-------------------------	-------------------------



ELEV 5507	TDZE 5507			
8000 HASIT				
KODYS 3.4 NM to RWY 25	EPOTE 7800			
1.9 NM to RWY 25	POMEE 8400			
6640	7800			
GP 3.00°	TCH 56			
1.9	1.5	3.6 NM	5.7 NM	
CATEGORY	A	B	C	D
LPV DA	5707- $\frac{3}{4}$ 200 (200- $\frac{3}{4}$ )			
LNAV/VNAV DA	6069-1 $\frac{5}{8}$ 562 (600-1 $\frac{5}{8}$ )			
LNAV MDA	5880-1 373 (400-1)			
<input checked="" type="checkbox"/> CIRCLING	6020-1 513 (600-1)	6140-1 633 (700-1)	6380-2 $\frac{1}{2}$ 873 (900-2 $\frac{1}{2}$ )	6400-3 893 (900-3)

SW-1, 22 FEB 2024 to 21 MAR 2024

SW-1, 22 FEB 2024 to 21 MAR 2024

WAAS CH <b>86210</b> <b>W05A</b>	APP CRS <b>053°</b>	Rwy Idg TDZE Apt Elev	<b>5590</b> <b>5498</b> <b>5507</b>
--	------------------------	-----------------------------	---

# RNAV (GPS) RWY 5

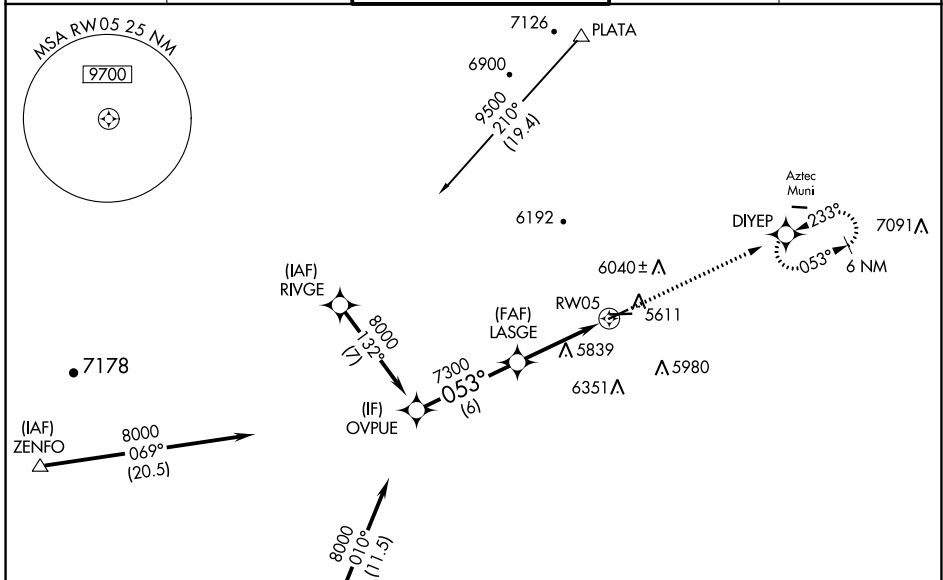
FOUR CORNERS RGNL (FMN)

RNP APCH-GPS.

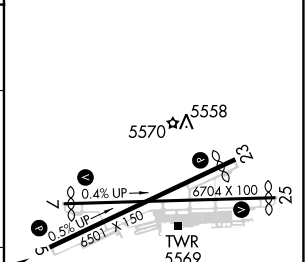
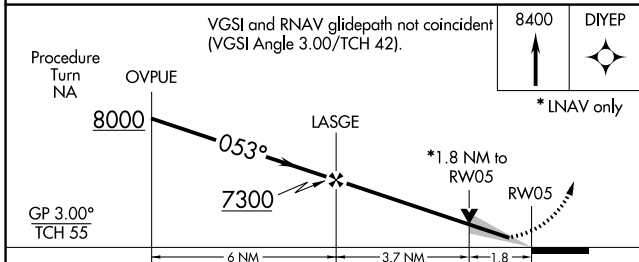
Baro-VNAV and VDP NA when using Durango altimeter setting. For uncompensated Baro-VNAV systems, LNAV/VNAV NA below -25°C or above 54°C. Circling NA for Cat D southeast of Rwy 5 and south of Rwy 25. When local altimeter setting not received, use Durango altimeter setting and increase LPV DA to 5993 feet and LNAV/VNAV DA to 6163 and all visibilities  $\frac{1}{8}$  SM; increase all MDAs 260 feet and visibility LNAV Cat B/C/D and Circling Cat A/B/C  $\frac{3}{4}$  SM.

MISSED APPROACH:  
Climb to 8400 direct  
DIYEP and hold.

ATIS <b>127.15</b>	DENVER CENTER <b>118.575 348.7</b>	FARMINGTON TOWER* <b>118.9 (CTAF) 0 257.8</b>	GND CON <b>121.7</b>	UNICOM <b>122.95</b>
-----------------------	---------------------------------------	--	-------------------------	-------------------------



ELEV 5507	TDZE 5498
-----------	-----------



CATEGORY	A	B	C	D
LPV DA		5750- $\frac{3}{4}$	252 (300- $\frac{3}{4}$ )	
LNAV/VNAV DA		5920-1 $\frac{1}{4}$	422 (500-1 $\frac{1}{4}$ )	
LNAV MDA	6100-1	602 (600-1)	6100-1 $\frac{3}{4}$	602 (600-1 $\frac{3}{4}$ )
CIRCLING	6100-1 593 (600-1)	6180-1 673 (700-1)	6380-2 $\frac{1}{2}$ 873 (900-2 $\frac{1}{2}$ )	6460-3 953 (1000-3)

REIL Rwy 23 and 25

MIRL Rwy 5-23 and 7-25

SW-1, 22 FEB 2024 to 21 MAR 2024

SW-1, 22 FEB 2024 to 21 MAR 2024

WAAS CH <b>90110</b> <b>W07A</b>	APP CRS <b>076°</b>	Rwy Idg <b>6248</b> TDZE <b>5502</b> Apt Elev <b>5507</b>
-------------------------------------	---------------------	---

# RNAV (GPS) RWY 7

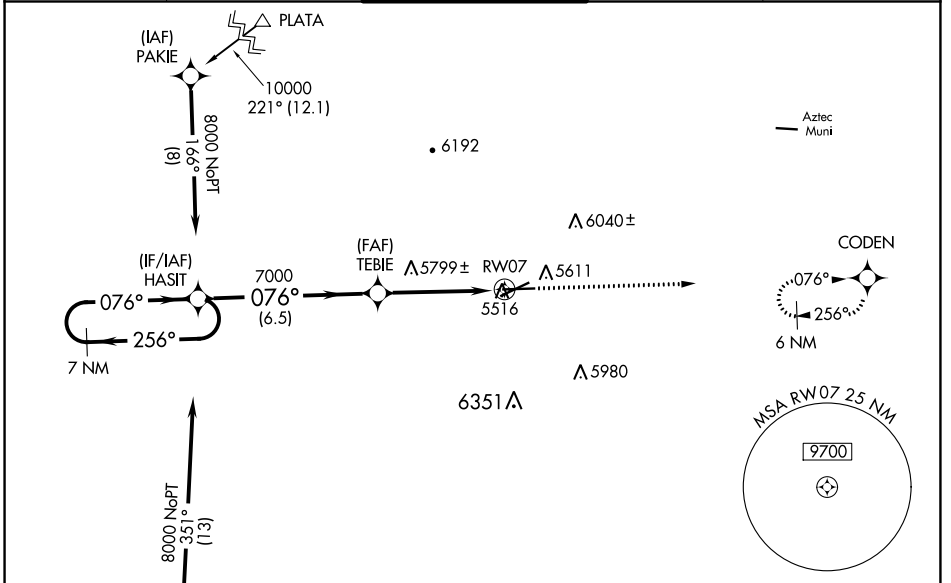
FOUR CORNERS RGNL (FMN)

RNP APCH-GPS.

**⚠** Baro-VNAV and VDP NA when using Durango altimeter setting. For uncompensated Baro-VNAV systems, LNAV/VNAV NA below -25°C or above 54°C. Circling NA for Cat D southeast of Rwy 5 and south of Rwy 25. When local altimeter setting not received, use Durango altimeter setting and increase LPV DA to 6003 feet and LNAV/VNAV DA to 6223 and all visibilities 5/8 SM; increase all MDAs 260 feet and visibility LNAV Cats B/C/D and Circling Cats A/B/C 7/8 SM.

MISSED APPROACH: Climb to 8300 direct CODEN and hold.

ATIS <b>127.15</b>	DENVER CENTER <b>118.575 348.7</b>	FARMINGTON TOWER* <b>118.9</b> (CTAF) <b>257.8</b>	GND CON <b>121.7</b>	UNICOM <b>122.95</b>
--------------------	------------------------------------	--	----------------------	----------------------



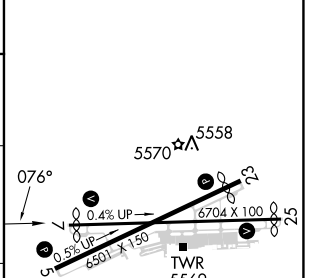
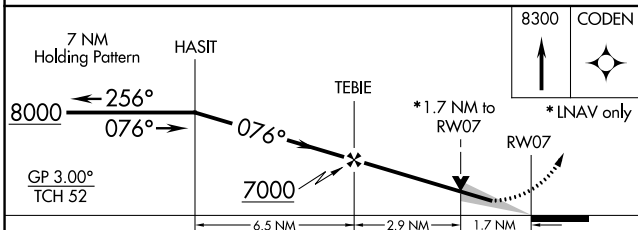
SW-1, 22 FEB 2024 to 21 MAR 2024

SW-1, 22 FEB 2024 to 21 MAR 2024

(IAF) DERMA **8000 NoPT** 351° (13)

Procedure NA for arrivals at DERMA via V95 southwest bound.

ELEV 5507	<b>D</b> TDZE 5502
-----------	--------------------



CATEGORY	A	B	C	D
LPV DA		5760-3/4	258 (300-3/4)	
LNAV/VNAV DA		5980-1 3/8	478 (500-1 3/8)	
LNAV MDA	6060-1	558 (600-1)	6060-1 5/8	558 (600-1 5/8)
CIRCLING	6100-1 593 (600-1)	6180-1 673 (700-1)	6380-2 1/2 873 (900-2 1/2)	6460-3 953 (1000-3)

REIL Rwy 23 and 25 **⓪**  
MIRL Rwy 5-23 and 7-25 **⓪**

VORTAC RSK <b>115.3</b> Chan <b>100</b>	APP CRS <b>252°</b>	Rwy Idg TDZE <b>5507</b> Apt Elev <b>5507</b>
---	------------------------	---

# VOR RWY 25

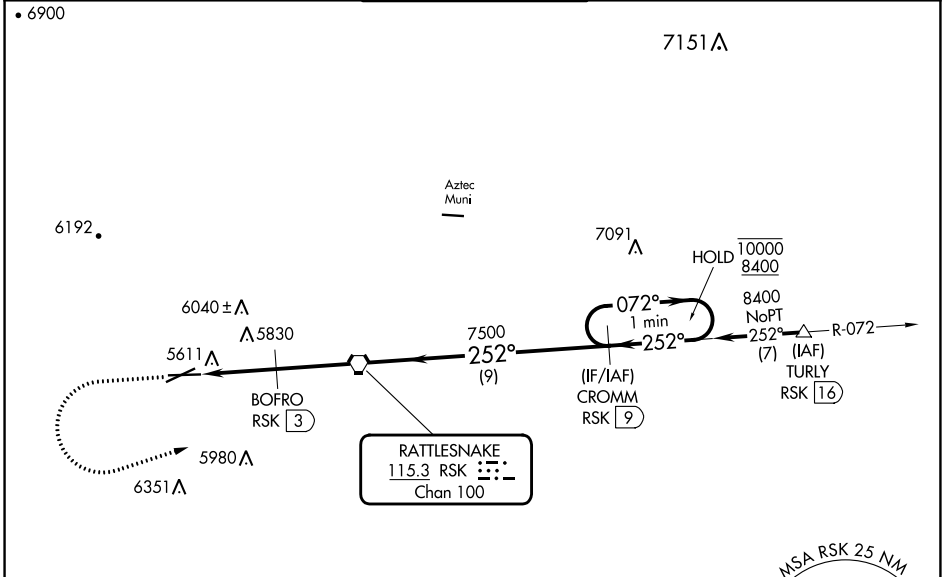
FOUR CORNERS RGNL (FMN)

DME required.

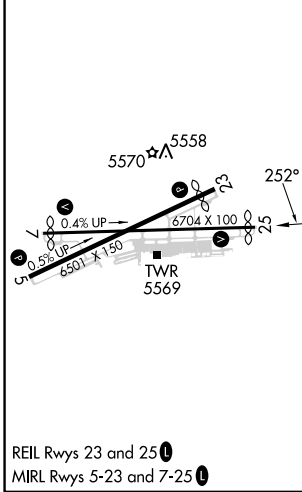
**⚠** VDP NA when using Durango-La Plata County altimeter setting. Circling NA for Cat D southeast of Rwy 5 and south of Rwy 25. When local altimeter setting not received, use Durango-La Plata County altimeter setting and increase all MDAs 260 feet; increase S-25 visibility Cat B/C/D 7/8 SM and Circling visibility Cat A/B/C 1/2 SM.

MISSED APPROACH: Climb to 7100 then climbing left turn to 8400 on heading 060° and on RSK VORTAC R-072 to CROMM/9 DME and hold.

ATIS <b>127.15</b>	DENVER CENTER <b>118.575 348.7</b>	FARMINGTON TOWER★ <b>118.9 (CTAF) 0 257.8</b>	GND CON <b>121.7</b>	UNICOM <b>122.95</b>
-----------------------	---------------------------------------	--	-------------------------	-------------------------



ELEV <b>5507</b>	<b>D</b>	TDZE <b>5507</b>
------------------	----------	------------------



7100	8400	RSK R-072	CROMM RSK 9	CROMM RSK 9	One Minute Holding Pattern
hdg 060°					
RSK 5.8	RSK 4.1	BOFRO RSK 3	RSK VORTAC	072° → 10000	← 252° 8400
		3.18° TCH 56			
		6500	7500		
		-1.6 NM	-1.2	3 NM	9 NM
CATEGORY	A	B	C	D	
S-25	6080-1	573 (600-1)	6080-1½	573 (600-1½)	
CIRCLING	6080-1	6140-1	6380-2½	6460-3	
	573 (600-1)	633 (700-1)	873 (900-2½)	953 (1000-3)	

SW-1, 22 FEB 2024 to 21 MAR 2024

SW-1, 22 FEB 2024 to 21 MAR 2024

VORTAC RSK <b>115.3</b> Chan <b>100</b>	APP CRS <b>070°</b>	Rwy Idg TDZE <b>5498</b> Apt Elev <b>5507</b>
---	------------------------	---

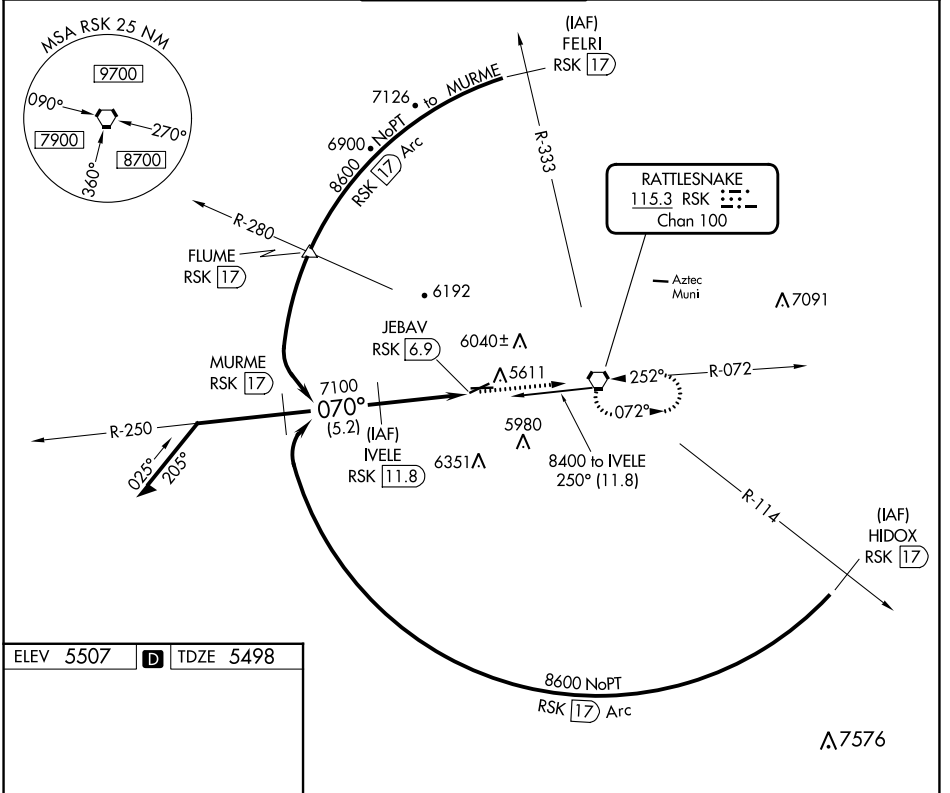
# VOR/DME RWY 5

FOUR CORNERS RGNL (FMN)

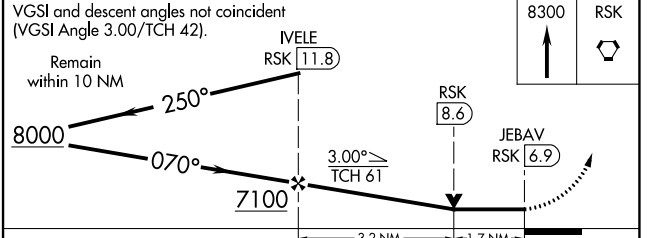
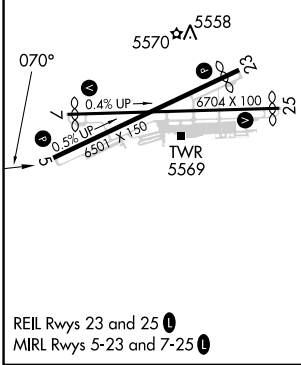
**⚠** Circling NA for Cat D southeast of Rwy 5 and south of Rwy 25. VDP NA when using Durango altimeter setting. When local altimeter not received, use Durango altimeter setting and increase all MDAs 260 feet and visibility Cats B/C/D and Circling Cats A/B/C ½ SM.

**MISSED APPROACH:** Climb to 8300 direct RSK VORTAC and hold.

ATIS <b>127.15</b>	DENVER CENTER <b>118.575 348.7</b>	<b>FARMINGTON TOWER*</b> <b>118.9 (CTAF) 0 257.8</b>	GND CON <b>121.7</b>	UNICOM <b>122.95</b>
-----------------------	---------------------------------------	---	-------------------------	-------------------------



ELEV 5507 **D** TDZE 5498



CATEGORY	A	B	C	D
S-5	6060-1	562 (600-1)	6060-1½	562 (600-1½)
CIRCLING	6100-1 593 (600-1)	6180-1 673 (700-1)	6380-2½ 873 (900-2½)	6460-3 953 (1000-3)

SW-1, 22 FEB 2024 to 21 MAR 2024

SW-1, 22 FEB 2024 to 21 MAR 2024

VORTAC RSK <b>115.3</b> Chan <b>100</b>	APP CRS <b>072°</b>	Rwy Idg TDZE <b>5502</b> Apt Elev <b>5507</b>
---	------------------------	---

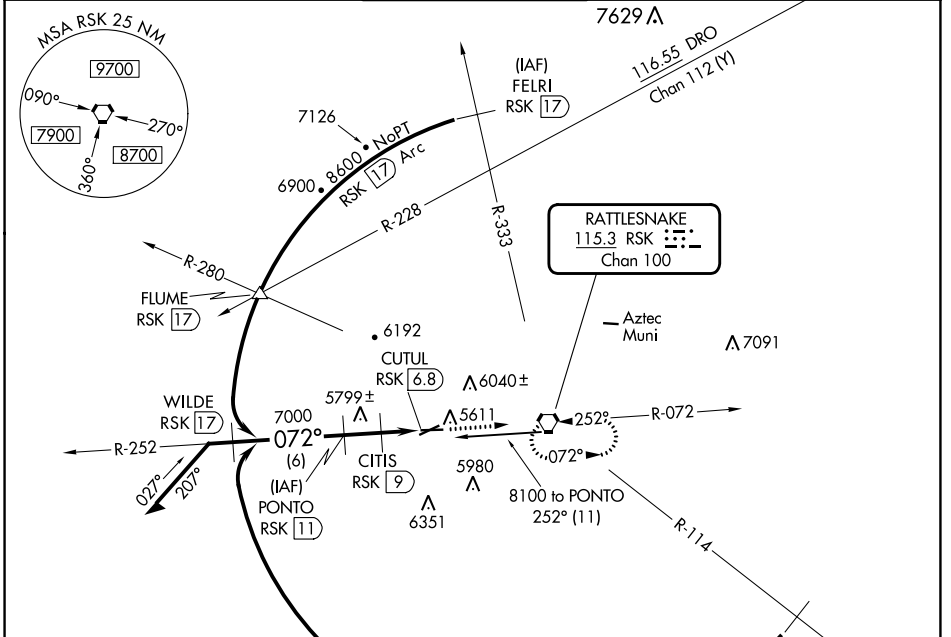
# VOR/DME RWY 7

FOUR CORNERS RGNL (FMN)

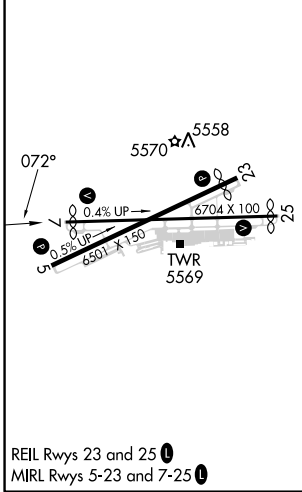
**⚠** Circling NA for Cat D southeast of Rwy 5 and south of Rwy 25. VDP NA when using Durango altimeter setting. When local altimeter not received, use Durango altimeter setting and increase all MDAs 260 feet and visibility S-7 Cat C/D and Circling Cats A/B/C ¾ SM.

**MISSED APPROACH:**  
Climb to 8300 direct RSK VORTAC and hold.

ATIS <b>127.15</b>	DENVER CENTER <b>118.575 348.7</b>	FARMINGTON TOWER* <b>118.9 (CTAF) 0 257.8</b>	GND CON <b>121.7</b>	UNICOM <b>122.95</b>
-----------------------	---------------------------------------	--	-------------------------	-------------------------



ELEV 5507	<b>D</b>	TDZE 5502
-----------	----------	-----------



VGSI and descent angles not coincident (VGSI Angle 3.00/TCH 50).

Remain within 10 NM

	8300	RSK
	↑	⬠

CATEGORY	A	B	C	D
S-7	5920-1	418 (500-1)	5920-1½	418 (500-1½)
CIRCLING	6100-1 593 (600-1)	6180-1 673 (700-1)	6380-2½ 873 (900-2½)	6460-3 953 (1000-3)

SW-1, 22 FEB 2024 to 21 MAR 2024

SW-1, 22 FEB 2024 to 21 MAR 2024