

WAAS CH 48900 W01A	APP CRS 005°	Rwy Idg TDZE 228 Apt Elev 228	3001
--	------------------------	---	-------------

RNAV (GPS) RWY 1

FRANKLIN COUNTY STATE (F'SO)

RNP APCH-GPS.

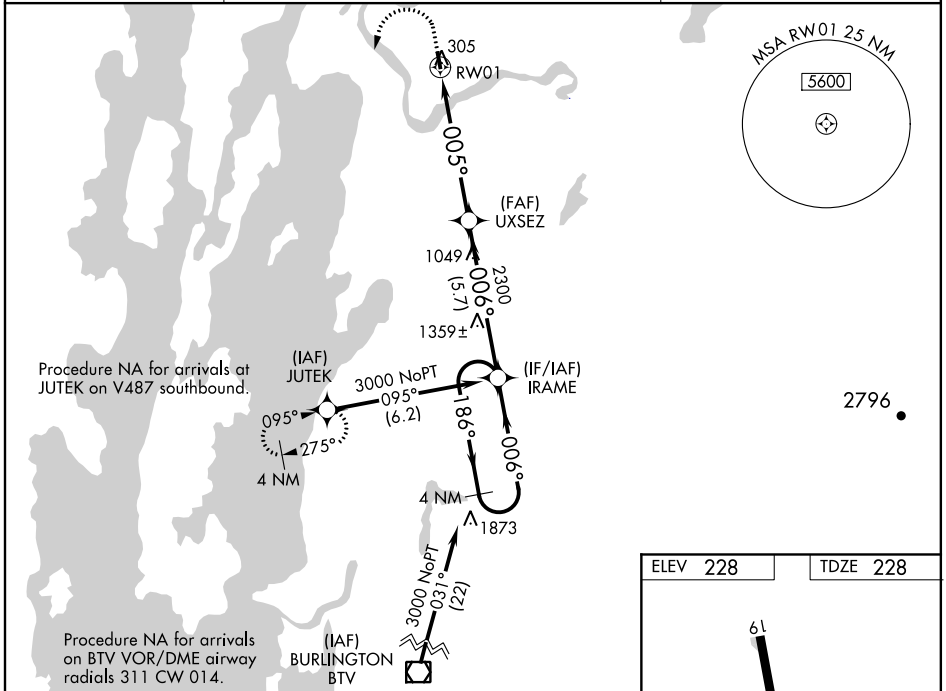
⚠ Circling Rwy 19 NA at night. Baro-VNAV NA when using Plattsburgh altimeter setting. For uncompensated Baro-VNAV systems, LNAV/VNAV NA below -15°C or above 54°C. When VGSi inop, Straight-in/Circling Rwy 1 procedure NA at night. Rwy 1 helicopter visibility reduction below 1 SM NA. When local altimeter setting not received, use Plattsburgh altimeter setting and increase LPV DA to 576 feet; LNAV/VNAV DA to 860 feet; increase all MDAs 80 feet and LNAV visibility Cat B ¼ SM, and Circling visibility Cat B ¼ SM.

MISSED APPROACH: Climb to 1100 then climbing left turn to 3000 direct JUTEK and hold.

AWOS-3
119.025

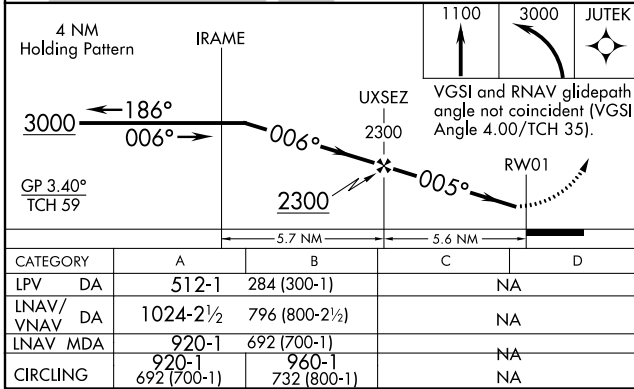
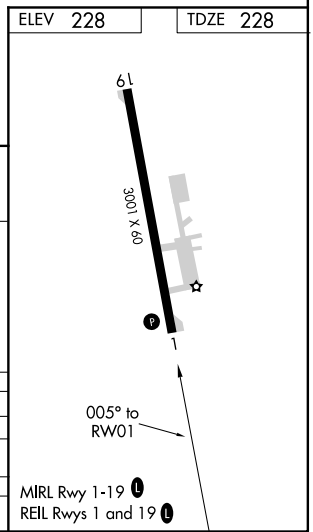
BURLINGTON APP CON ★
(EAST) **278.8**
(WEST) **360.8**

UNICOM
122.8 (CTAF) **📻**



NE-1, 19 MAY 2022 to 16 JUN 2022

NE-1, 19 MAY 2022 to 16 JUN 2022



WAAS CH 78122 W19A	APP CRS 185°	Rwy Idg TDZE 228 Apt Elev 228	3001
--	------------------------	---	-------------

RNAV (GPS) RWY 19

FRANKLIN COUNTY STATE (F'SO)

RNP APCH - GPS.

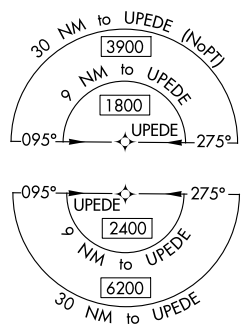
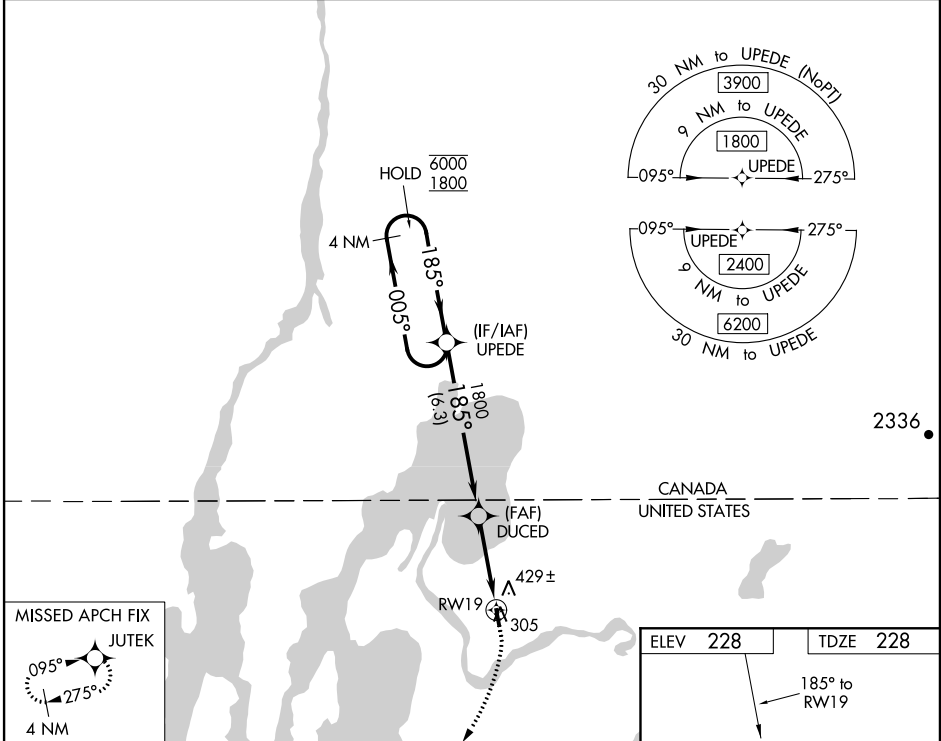
▼
▲ Procedure NA at night. Rwy 19 helicopter visibility reduction below 1 SM NA.

MISSED APPROACH: Climb to 700 then climbing right turn to 3000 direct JUTEK and hold.

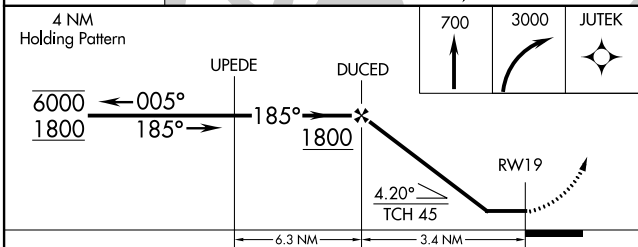
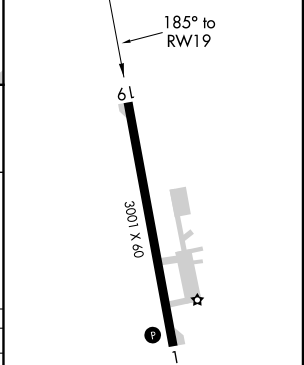
AWOS-3
119.025

BURLINGTON APP CON*
121.1
(EAST) **278.8**
(WEST) **360.8**

UNICOM
122.8 (CTAF) **①**



ELEV 228	TDZE 228
-----------------	-----------------



CATEGORY	A	B	C	D
LP MDA	640-1	412 (500-1)	NA	
LNAV MDA	680-1	452 (500-1)	NA	
Ⓢ CIRCLING	760-1 532 (600-1)	960-1 732 (800-1)	NA	

MIRL Rwy 1-19 **①**
REIL Rwy 1 and 19 **①**

NE-1, 19 MAY 2022 to 16 JUN 2022

NE-1, 19 MAY 2022 to 16 JUN 2022