

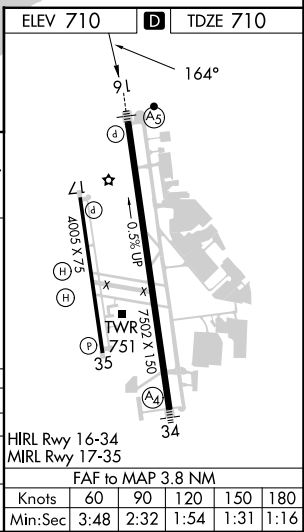
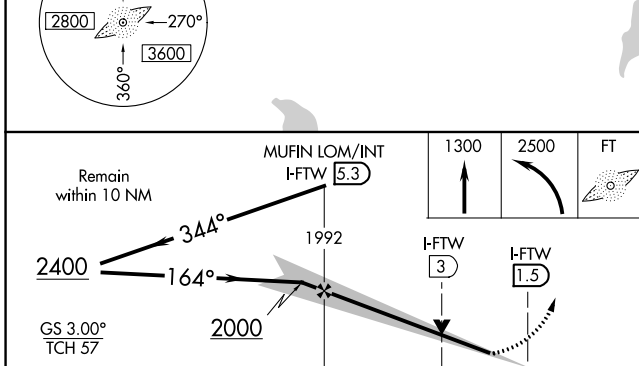
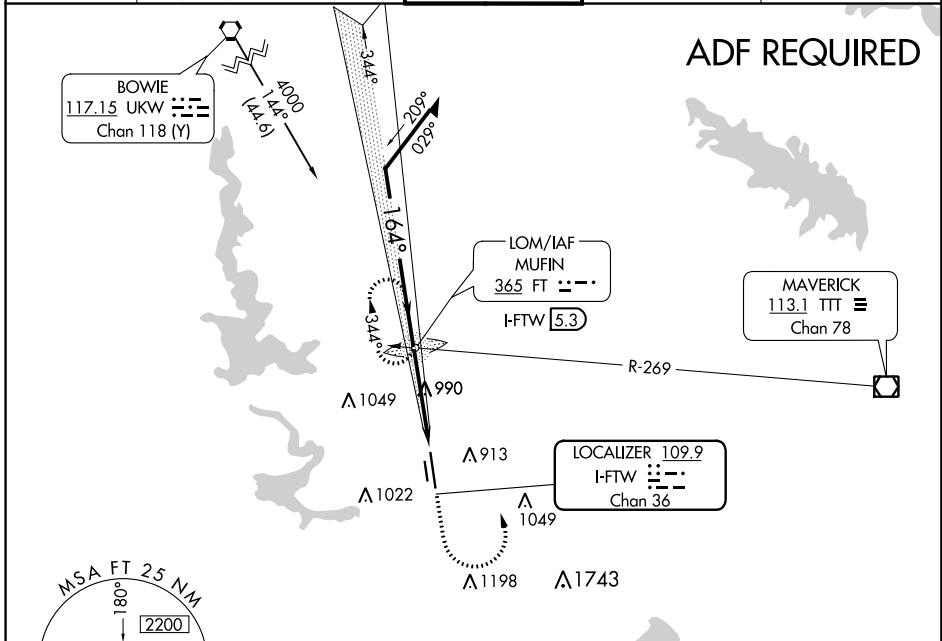
LOC I-FTW <b>109.9</b> Chan <b>36</b>	APP CRS <b>164°</b>	Rwy Idg <b>7502</b> TDZE <b>710</b> Apt Elev <b>710</b>
---	------------------------	---

# ILS or LOC RWY 16

FORT WORTH MEACHAM INTL (FTW)

<p>*RVR 1800 authorized with the use of FD or AP or HUD to DA.</p>	<p>MALS R</p>	<p>MISSED APPROACH: Climb to 1300 then climbing left turn to 2500 direct FT LOM and hold, continue climb-in-hold to 2500.</p>
--	---------------	---

ATIS <b>120.7</b>	REGIONAL APP CON (North) <b>118.1 306.95</b> (South) <b>135.975 379.9</b>	MEACHAM TOWER <b>118.3 257.8</b>	GND CON <b>121.9</b>	CLNC DEL <b>124.65</b>
----------------------	---	-------------------------------------	-------------------------	---------------------------



CATEGORY	A	B	C	D
S- ILS 16*	910/24 200 (200-½)			
S- LOC 16	1240/24 530 (600-½)		1240/50 530 (600-1)	1240/60 530 (600-1¼)
CIRCLING	1260-1 550 (600-1)	1280-1 570 (600-1)	1340-1¾ 630 (700-1¾)	1500-2½ 790 (800-2½)

SC-2, 22 FEB 2024 to 21 MAR 2024

SC-2, 22 FEB 2024 to 21 MAR 2024

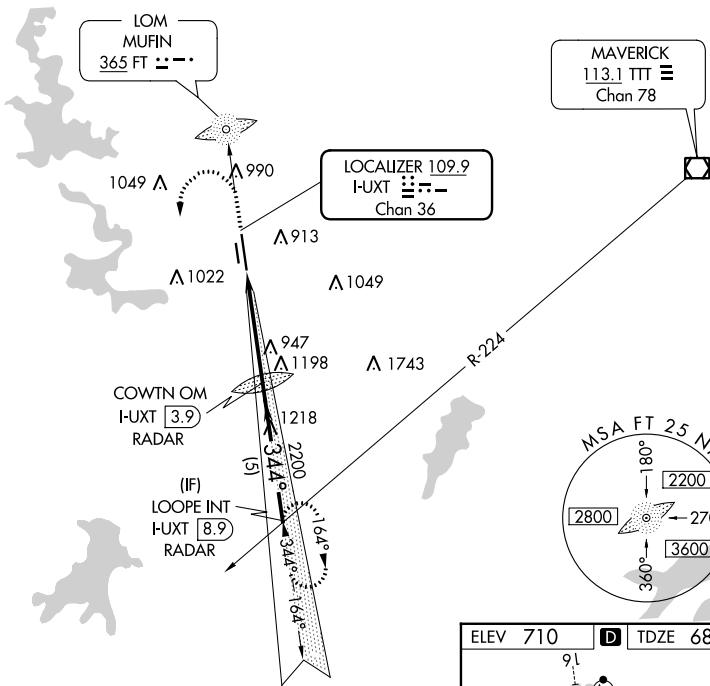
LOC I-UXT <b>109.9</b> Chan <b>36</b>	APP CRS <b>344°</b>	Rwy Idg <b>7455</b> TDZE <b>680</b> Apt Elev <b>710</b>
---	------------------------	---

# ILS or LOC RWY 34

FORT WORTH MEACHAM INTL (FTW)

<p><b>▼</b> Inoperative table does not apply to S-LOC 34 Cat C.</p>		<p>MALS </p>	<p>MISSED APPROACH : Climb to 1500, then climbing left turn to 2800 via I-UXT south course to LOOPE Int/ I-UXT 8.9 DME and hold.</p>	
---	--	--------------	--	--

<p>ATIS <b>120.7</b></p>	<p>REGIONAL APP CON (North) <b>118.1 306.95</b> (South) <b>135.975 379.9</b></p>	<p>MEACHAM TOWER <b>118.3 257.8</b></p>	<p>GND CON <b>121.9</b></p>	<p>CLNC DEL <b>124.65</b></p>
------------------------------	--	---	---------------------------------	-----------------------------------

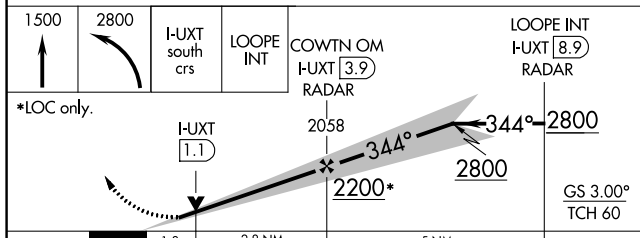


SC-2, 22 FEB 2024 to 21 MAR 2024

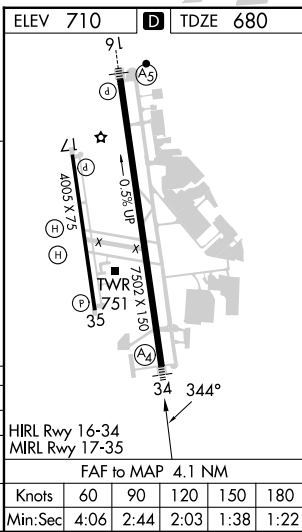
SC-2, 22 FEB 2024 to 21 MAR 2024

## RADAR REQUIRED

▲ 1772



CATEGORY	A	B	C	D
S- ILS 34	880-3/4		200 (200-3/4)	
S-LOC 34	1200-3/4	520 (500-3/4)	1200-1 1/2 520 (500-1 1/2)	1200-1 3/4 520 (500-1 3/4)
<b>C</b> CIRCLING	1260-1 550 (600-1)	1280-1 570 (600-1)	1340-1 3/4 630 (700-1 3/4)	1500-2 1/2 790 (800-2 1/2)



Knots	60	90	120	150	180
Min:Sec	4:06	2:44	2:03	1:38	1:22

WAAS CH <b>42612</b> <b>W16A</b>	APP CRS <b>164°</b>	Rwy ldg <b>7502</b> TDZE <b>710</b> Apt Elev <b>710</b>
--	------------------------	---

# RNAV (GPS) RWY 16

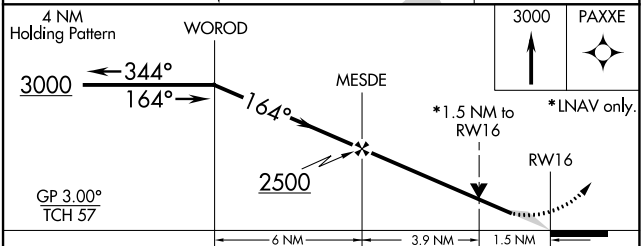
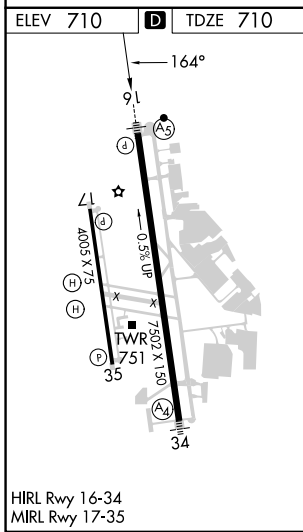
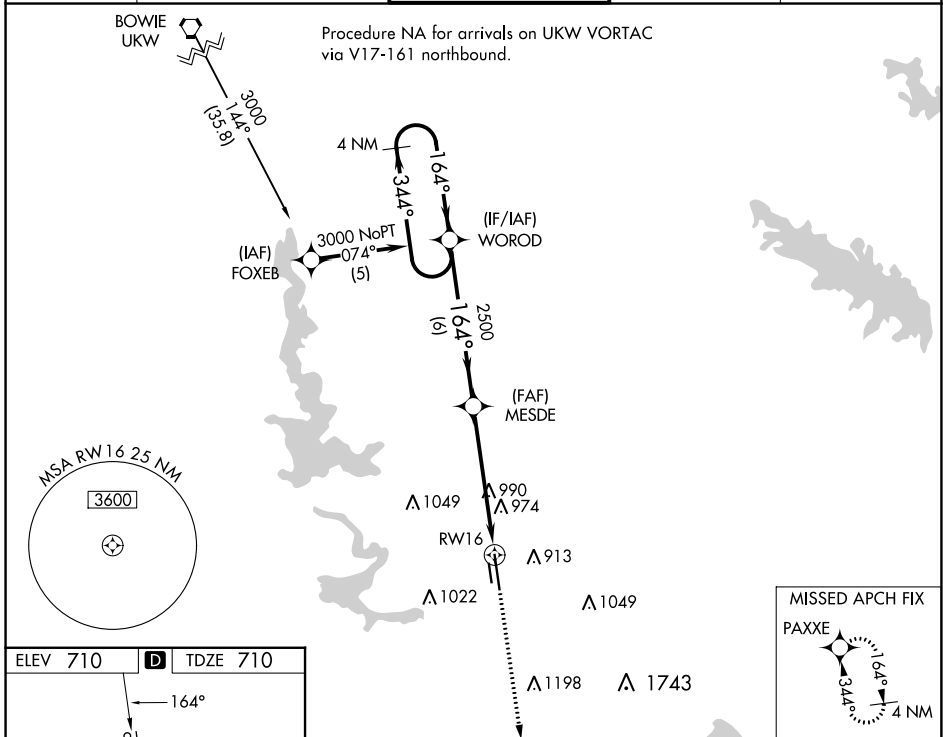
FORT WORTH MEACHAM INTL (FTW)

**⚠** For uncompensated Baro-VNAV systems, LNAV/VNAV NA below -16°C (4°F) or above 47°C (116°F). DME/DME RNP-0.3 NA.  
**⚠** \*\* RVR 1800 authorized with use of FD or AP or HUD to DA.



MISSED APPROACH: Climb to 3000 direct PAXXE and hold.

ATIS <b>120.7</b>	REGIONAL APP CON (North) <b>118.1 306.95</b> (South) <b>135.975 379.9</b>	MEACHAM TOWER <b>118.3 257.8</b>	GND CON <b>121.9</b>	CLNC DEL <b>124.65</b>
----------------------	---	-------------------------------------	-------------------------	---------------------------



CATEGORY	A	B	C	D
LPV DA **		910/24	200 (200-1/2)	
LNAV/VNAV DA		1284-1 1/2	574 (600-1 1/2)	
LNAV MDA	1240/24	530 (600-1/2)	1240/50 530 (600-1)	1240/60 530 (600-1 1/4)
CIRCLING	1260-1 550 (600-1)	1280-1 570 (600-1)	1340-1 3/4 630 (700-1 3/4)	1500-2 1/2 790 (800-2 1/2)

SC-2, 22 FEB 2024 to 21 MAR 2024

SC-2, 22 FEB 2024 to 21 MAR 2024

WAAS CH <b>53412</b> <b>W34A</b>	APP CRS <b>344°</b>	Rwy Ldg <b>7455</b> TDZE <b>680</b> Apt Elev <b>710</b>
--	------------------------	---

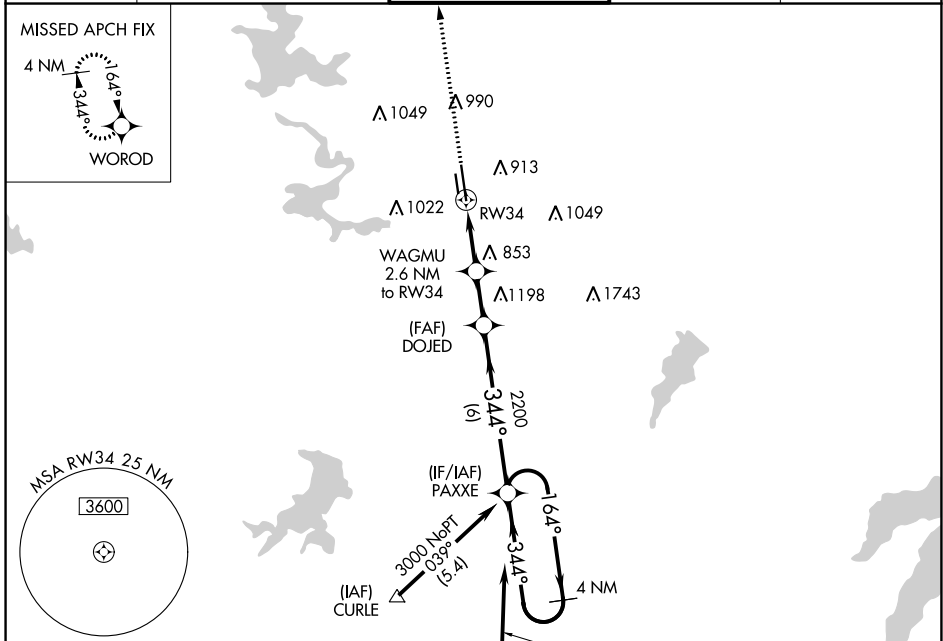
# RNAV (GPS) RWY 34

FORT WORTH MEACHAM INTL (FTW)

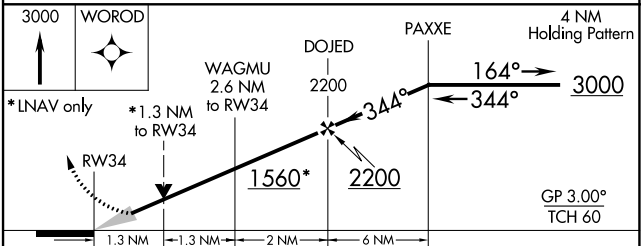
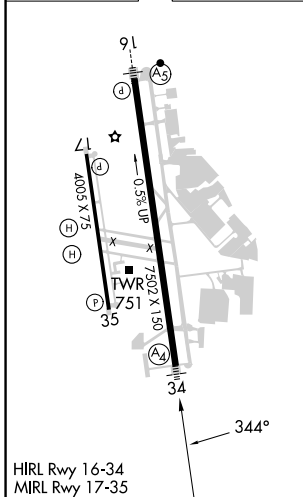
**⚠** For uncompensated Baro-VNAV systems, LNAV/VNAV NA below -5°C (23°F) or above 54°C (130°F). DME/DME RNP-0.3 NA. For inop MALS, increase LNAV/VNAV Cat D and LNAV Cat D visibility to 1½ mile.

MALS MISSED APPROACH: Climb to 3000 direct WOROD and hold.

ATIS <b>120.7</b>	REGIONAL APP CON (North) <b>118.1 306.95</b> (South) <b>135.975 379.9</b>	MEACHAM TOWER <b>118.3 257.8</b>	GND CON <b>121.9</b>	CLNC DEL <b>124.65</b>
----------------------	---	-------------------------------------	-------------------------	---------------------------



ELEV 710	<b>D</b>	TDZE 680
----------	----------	----------



CATEGORY	A	B	C	D
LPV DA		880-¾	200 (200-¾)	
LNAV/VNAV DA		1091-1½	411 (400-1½)	
LNAV MDA	1160-¾	480 (500-¾)	1160-1½	480 (500-1½)
<b>C</b> CIRCLING	1260-1 550 (600-1)	1280-1 570 (600-1)	1340-1¾ 630 (700-1¾)	1500-2½ 790 (800-2½)