

LOC/DME I-FUL 108.9 Chan 26	APP CRS 243°	Rwy Idg 2868 TDZE 95 Apt Elev 96
---	------------------------	---

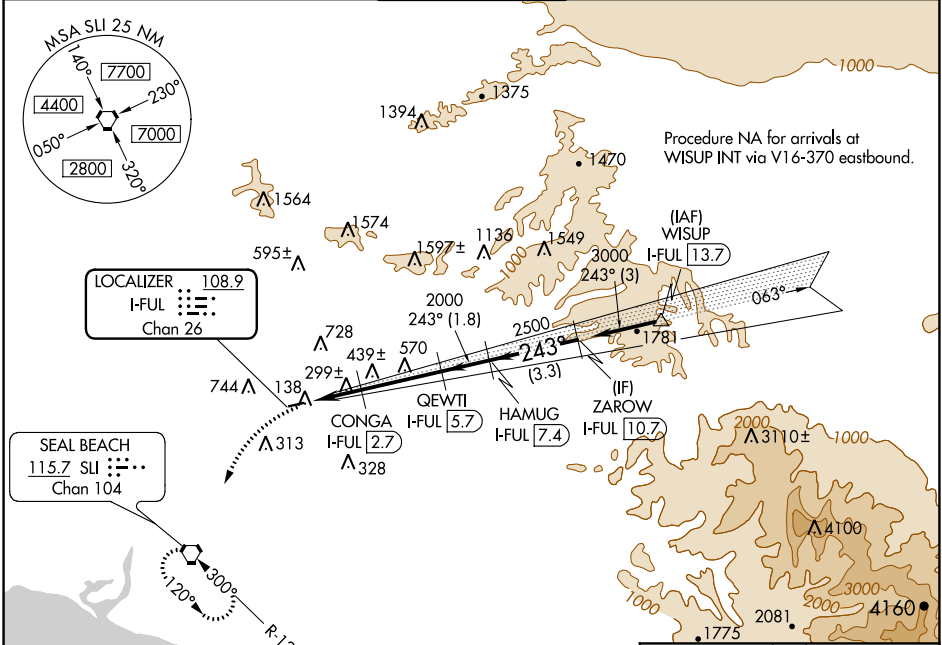
LOC/DME RWY 24

FULLERTON MUNI (F'UL)

⚠ Inoperative table does not apply.
⚠ Night landing: Rwy 6 NA.
 Helicopter visibility reduction below 1 SM NA.

MISSED APPROACH: Climbing left turn to 2600 direct SLI VORTAC and hold.

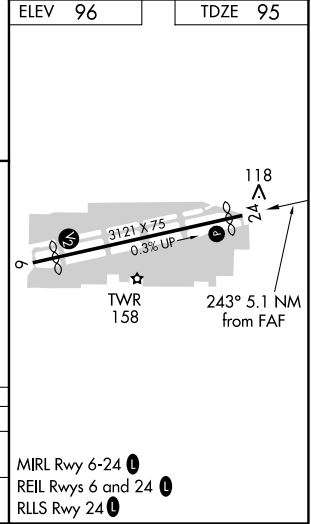
ATIS 125.05	SOCAL APP CON 125.35 316.125	FULLERTON TOWER* 119.1 (CTAF) 0	GND CON 121.8	UNICOM 122.95
-----------------------	--	--	-------------------------	-------------------------



SW-3, 09 SEP 2021 to 07 OCT 2021

SW-3, 09 SEP 2021 to 07 OCT 2021

	ELEV 96	TDZE 95
2600	SLI	VGSI and descent angles not coincident (VGSI Angle 4.00/TCH 33).
	I-FUL 0.5	CONGA I-FUL 2.7
		QEWTI I-FUL 5.7
		HAMUG I-FUL 7.4
		ZAROW I-FUL 10.7
		3000
		2500
		2000
		920
		243°
		3.45° TCH 33
		2.2 NM
		2.9 NM
		1.8 NM
		3.3 NM
CATEGORY	A	B
S-24	560-1	465 (500-1)
CIRCLING	760-1	1060-1½
	664 (700-1)	964 (1000-1½)
		C
		D
		NA
		NA



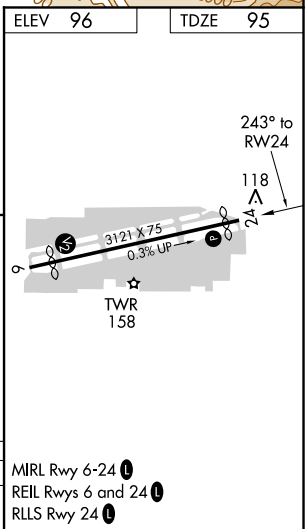
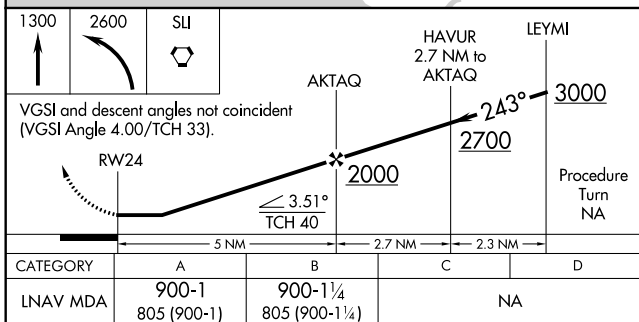
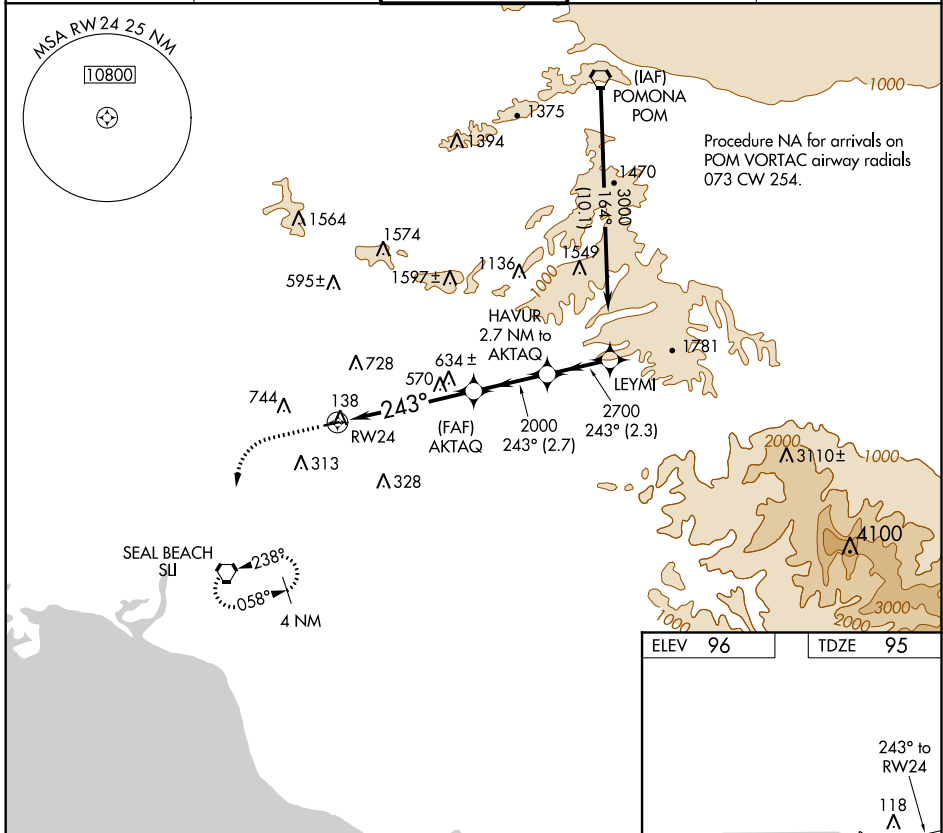
APP CRS 243°	Rwy Idg 2868
	TDZE 95
	Apt Elev 96

RNAV (GPS) RWY 24

FULLERTON MUNI (F'UL)

RNP APCH.	MISSED APPROACH: Climb to 1300, then climbing left turn to 2600 direct SUI VORTAC and hold.
<p>▼ Inoperative table does not apply.</p> <p>▲ NA Helicopter visibility reduction below 1 SM NA.</p>	

ATIS 125.05	SOCAL APP CON 125.35 316.125	FULLERTON TOWER ★ 119.1 (CTAF) 0	GND CON 121.8	UNICOM 122.95
-----------------------	--	---	-------------------------	-------------------------



SW-3, 09 SEP 2021 to 07 OCT 2021

SW-3, 09 SEP 2021 to 07 OCT 2021

MRL Rwy 6-24
REIL Rws 6 and 24
RLLS Rwy 24

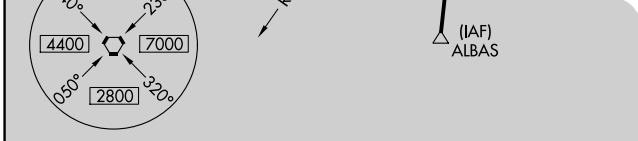
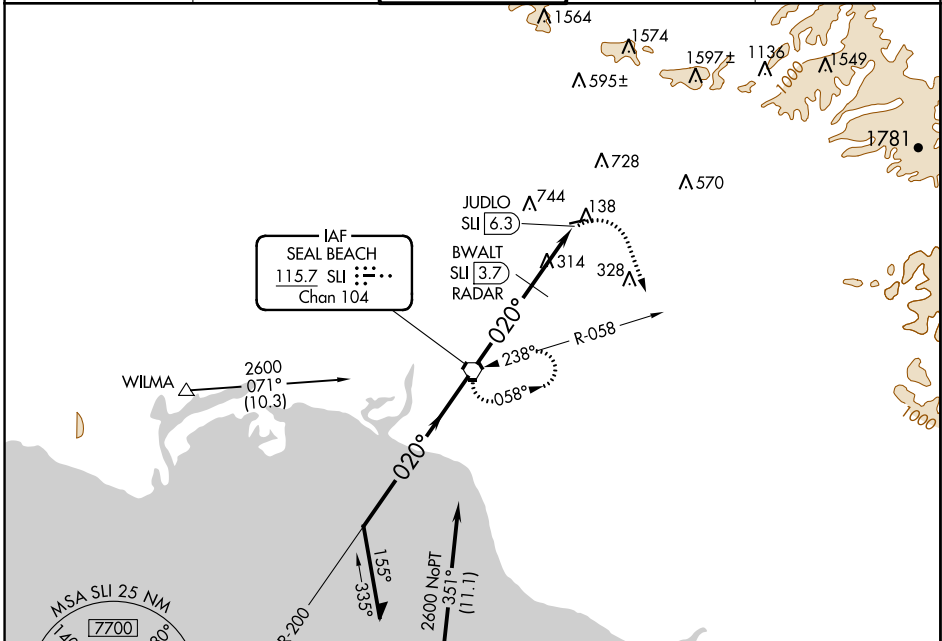
VORTAC SLI 115.7 Chan 104	APP CRS 020°	Rwy Idg TDZE Apt Elev	N/A N/A 96
---	------------------------	-----------------------------	---------------------------------------

VOR-A
FULLERTON MUNI (FUL)

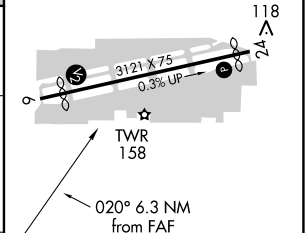
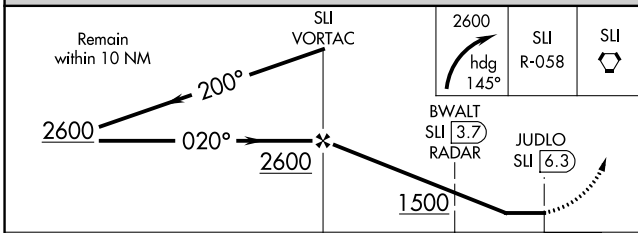
▽ Maximum entry altitude 6000.
▲ Night landing: Rwy 6 NA.
Helicopter visibility reduction below 1 SM NA.

MISSED APPROACH: Climbing right turn to 2600 via heading 145° and SLI R-058 to SLI VORTAC and hold.

ATIS 125.05	SOCAL APP CON 125.35 316.125	FULLERTON TOWER* 119.1 (CTAF) 0	GND CON 121.8	UNICOM 122.95
-----------------------	--	--	-------------------------	-------------------------



ELEV 96
MIRL Rwy 6-24 0
REIL Rwys 6 and 24 0
RLS Rwy 24 0



CATEGORY	A	B	C	D
CIRCLING	1500-1¼ 1404 (1500-1¼)	1500-1½ 1404 (1500-1½)	NA	NA
BWALT FIX MINIMUMS				
CIRCLING	760-1 664 (700-1)	1060-1½ 964 (1000-1½)	NA	NA

FAF to MAP 6.3 NM					
Knots	60	90	120	150	180
Min:Sec	6:18	4:12	3:09	2:31	2:06

SW-3, 09 SEP 2021 to 07 OCT 2021

SW-3, 09 SEP 2021 to 07 OCT 2021