

LOC/DME I-FYJ <b>109.55</b> Chan 32 (Y)	APP CRS <b>094°</b>	Rwy Ldg TDZE Apt Elev	<b>5000</b> <b>14</b> <b>20</b>
---	------------------------	-----------------------------	---------------------------------------

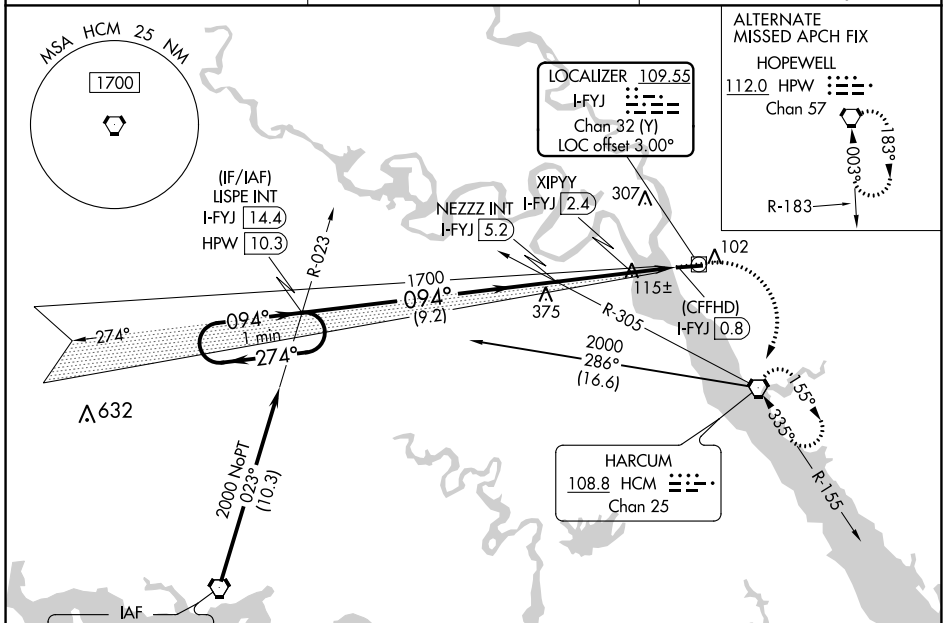
# LOC RWY 10

MIDDLE PENINSULA RGNL (F'YJ)

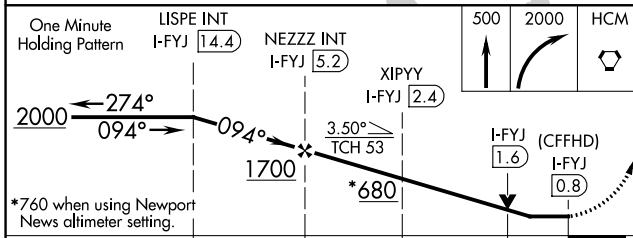
**NA** When local altimeter setting not received, use Newport News altimeter setting and increase all MDA 80 feet and increase S-10 Cat B and Circling Cat B visibility ¼ SM. VDP NA when using Newport News altimeter setting.

MISSED APPROACH: Climb to 500 then climbing right turn to 2000 direct HCM VORTAC and hold, continue climb-in-hold to 2000.

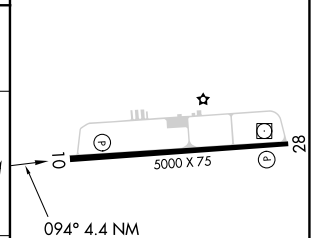
AWOS-3 <b>132.825</b>	POTOMAC APP CON <b>126.4 282.375</b>	UNICOM <b>123.0 (CTAF) 0</b>
--------------------------	---	---------------------------------



Procedure NA for arrivals on HPW VORTAC airway radials 323 CW 025.



ELEV 20	TDZE 14
---------	---------



One Minute Holding Pattern	LISPE INT I-FYJ 1.44	NEZZZ INT I-FYJ 5.2	XIPYY I-FYJ 2.4	500	2000	HCM
2000 ← 274°	→ 094°	→ 094°	→ 3.50° TCH 53	↑	↘	⬠
*760 when using Newport News altimeter setting.						
CATEGORY	A	B	C	D		
S-10	680-1	666 (700-1)		NA		
CIRCLING	680-1	660 (700-1)		NA		
XIPYY FIX MINIMUMS						
S-10	380-1	366 (400-1)		NA		
CIRCLING	480-1 460 (500-1)	620-1 600 (600-1)		NA		

MIRL Rwy 10-28	REIL Rws 10 and 28
FAF to MAP 4.4 NM	
Knots	60 90 120 150 180
Min:Sec	4:24 2:56 2:12 1:46 1:28

NE-3, 02 DEC 2021 to 30 DEC 2021

NE-3, 02 DEC 2021 to 30 DEC 2021

WAAS Ch <b>40317</b> <b>W10A</b>	APP CRS <b>097°</b>	Rwy Idg TDZE Apt Elev	<b>5000</b> <b>14</b> <b>20</b>
--	------------------------	-----------------------------	---------------------------------------

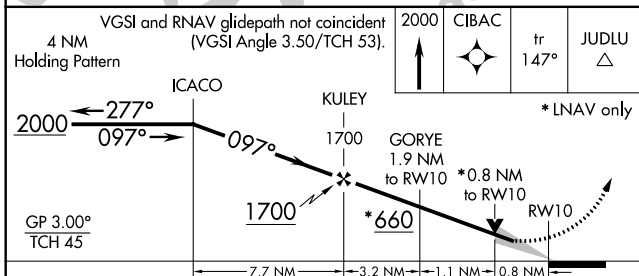
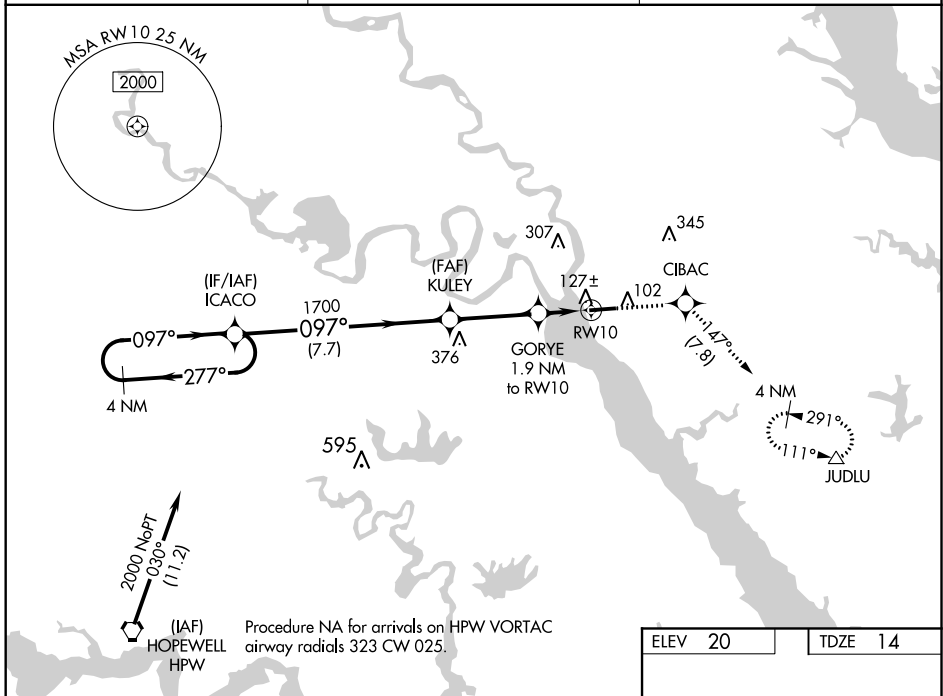
# RNAV (GPS) RWY 10

MIDDLE PENINSULA RGNL (F'YJ)

**⚠** For uncompensated Baro-VNAV systems, LNAV/VNAV NA below -1.5°C (5°F) or above 54°C (130°F). Baro-VNAV and VDP NA when using Newport News altimeter setting. DME/DME RNP-0.3 NA. When local altimeter setting not received, use Newport News altimeter setting: increase LPV DA to 329 feet; increase LNAV/VNAV DA to 420 feet and Cats A/B visibility ¼ SM; increase all MDA 80 feet.

**MISSED APPROACH:** Climb to 2000 direct CIBAC and on track 147° to JUDLU and hold.

AWOS-3 <b>132.825</b>	POTOMAC APP CON <b>126.4 282.375</b>	UNICOM <b>123.0 (CTAF) 0</b>
--------------------------	---	---------------------------------



ELEV 20	TDZE 14
---------	---------

MIRL Rwy 10-28 0  
REIL Rwy 10 and 28 0

CATEGORY	A	B	C	D
LPV DA	264-1	250 (300-1)		NA
LNAV/VNAV DA	355-1¼	341 (400-1¼)		NA
LNAV MDA	380-1	366 (400-1)		NA
<b>C</b> CIRCLING	480-1 460 (500-1)	620-1 600 (600-1)		NA

NE-3, 02 DEC 2021 to 30 DEC 2021

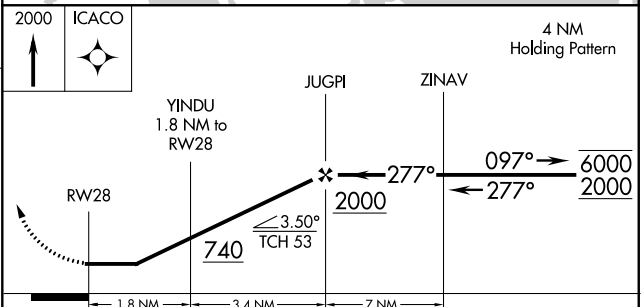
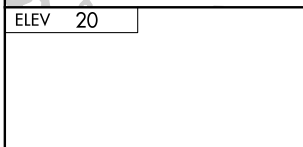
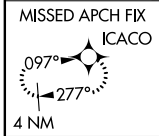
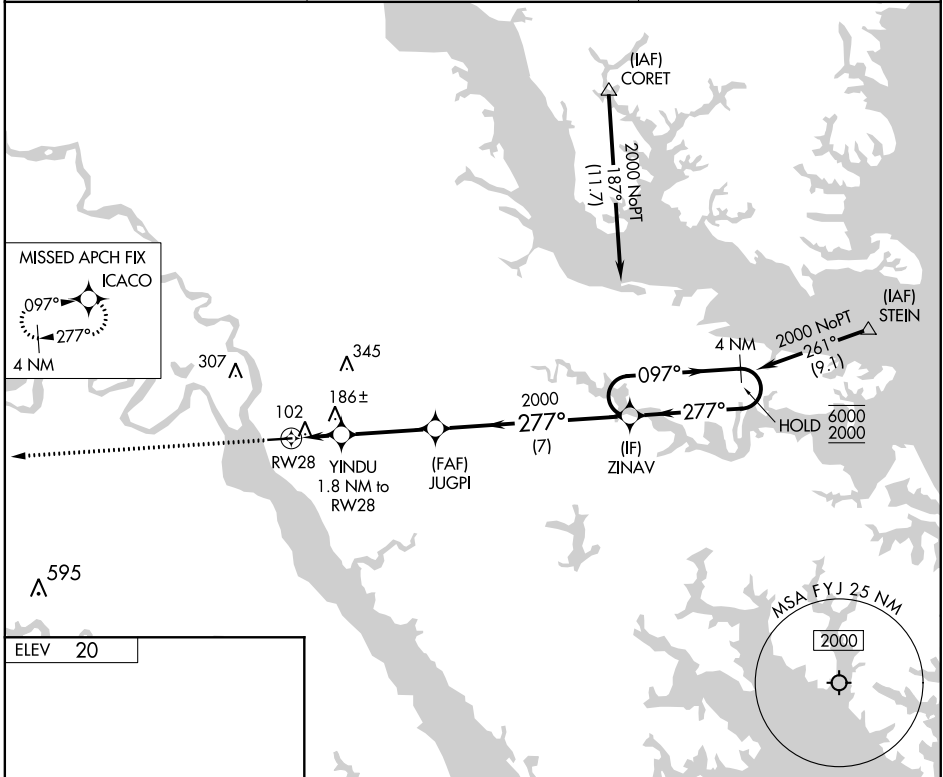
NE-3, 02 DEC 2021 to 30 DEC 2021

APP CRS <b>277°</b>	Rwy Idg TDZE Apt Elev	<b>N/A</b> <b>N/A</b> <b>20</b>
------------------------	-----------------------------	---------------------------------------

# RNAV (GPS)-B

MIDDLE PENINSULA RGNL (F'YJ)

RNP APCH.		MISSED APPROACH: Climb to 2000 direct ICACO and hold.
AWOS-3 <b>132.825</b>	POTOMAC APP CON <b>126.4 282.375</b>	UNICOM <b>123.0 (CTAF) 0</b>



MIRL Rwy 10-28 0  
REIL Rws 10 and 28 0

CATEGORY	A	B	C	D
CIRCLING	480-1 460 (500-1)	620-1 600 (600-1)	NA	

NE-3, 02 DEC 2021 to 30 DEC 2021

NE-3, 02 DEC 2021 to 30 DEC 2021

VORTAC HCM <b>108.8</b> Chan <b>25</b>	APP CRS <b>337°</b>	Rwy Idg TDZE Apt Elev	<b>N/A</b> <b>N/A</b> <b>20</b>
--	------------------------	-----------------------------	---------------------------------------

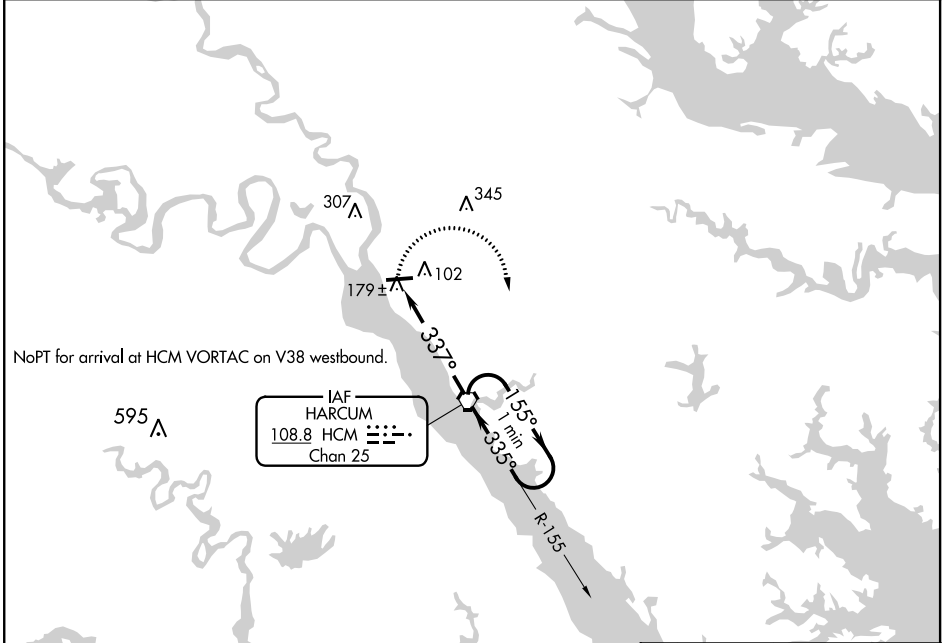
# VOR-A

MIDDLE PENINSULA RGNL (F'YJ)

**⚠** When local altimeter setting not received, use Newport News altimeter setting and increase all MDA 80 feet.

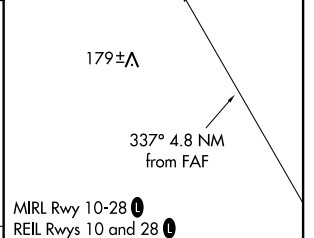
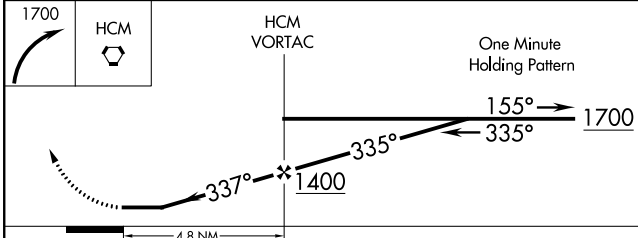
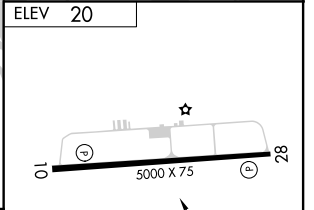
**⚠** MISSED APPROACH: Climbing right turn to 1700 direct HCM VORTAC and hold.

AWOS-3 <b>132.825</b>	POTOMAC APP CON <b>126.4 282.375</b>	UNICOM <b>123.0</b> (CTAF) <b>📞</b>
--------------------------	---	--



NE-3, 02 DEC 2021 to 30 DEC 2021

NE-3, 02 DEC 2021 to 30 DEC 2021



MIRL Rwy 10-28 **📞**  
REIL Rwys 10 and 28 **📞**

CATEGORY	A	B	C	D	FAF to MAP 4.8 NM					
<b>📞</b> CIRCLING	480-1	620-1	NA		Knots	60	90	120	150	180
	460 (500-1)	600 (600-1)			Min:Sec	4:48	3:12	2:24	1:55	1:36