

WAAS CH 99326 W27A	APP CRS 272°	Rwy Idg 4699 TDZE 773 Apt Elev 774
--	------------------------	---

RNAV (GPS) RWY 27

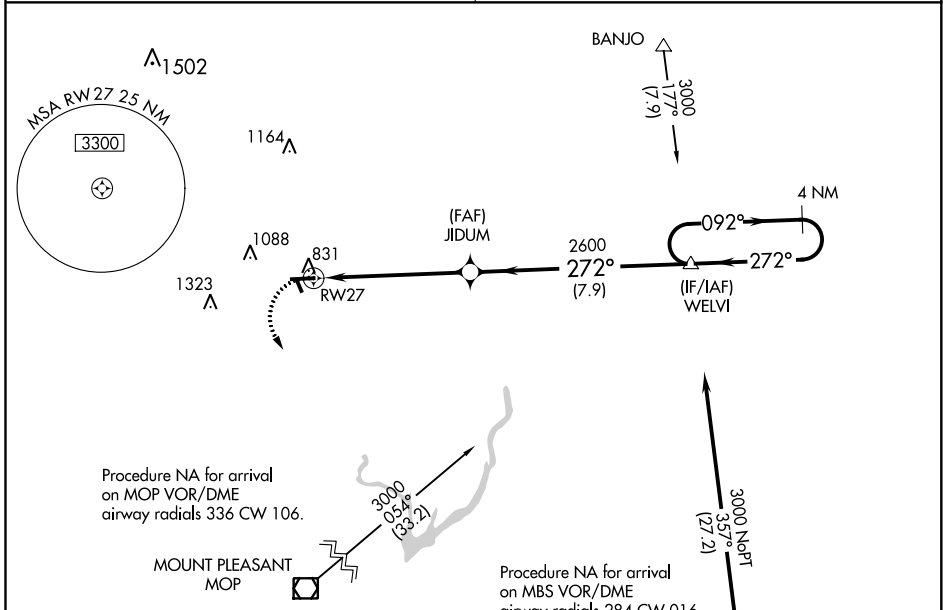
GLADWIN ZETTEL MEML (GDW)

RNP APCH.

▼ Circling NA to Rwy 15 and 33. Rwy 27 helicopter visibility reduction below 1 SM NA. DME/DME RNP-0.3 NA. Procedure NA at night. Use Mount Pleasant altimeter setting; when not received, use Midland altimeter setting and increase all MDA 20 feet; increase LP and LNAV Cats C/D visibility 1/8 SM.

▲ NA MISSED APPROACH: Climbing left turn to 2600 direct WHIPP and hold.

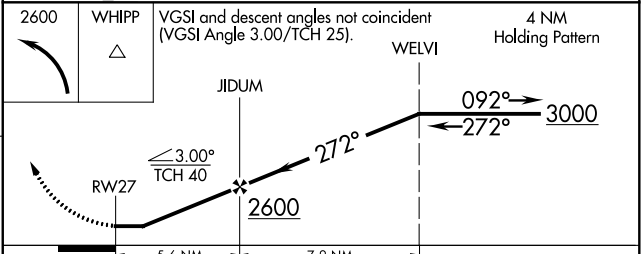
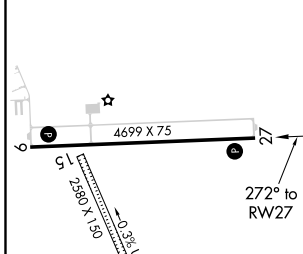
GREAT LAKES APP CON* 126.45 235.625	UNICOM 122.8 (CTAF) 0
---	---------------------------------



Procedure NA for arrival on MOP VOR/DME airway radials 336 CW 106.

Procedure NA for arrival on MBS VOR/DME airway radials 284 CW 016.

ELEV 774	TDZE 773
-----------------	-----------------



CATEGORY		A	B	C	D
LP	MDA	1280-1	507 (600-1)	1280-1 3/8	507 (600-1 1/8)
LNAV	MDA	1280-1	507 (600-1)	1280-1 3/8	507 (600-1 1/8)
CIRCLING		1420-1	1500-1	1520-2 1/4	1700-3
		646 (700-1)	726 (800-1)	746 (800-2 1/4)	926 (1000-3)

MIRL Rwy 9-27 0
REIL Rwy 9 and 27 0

EC-1, 02 DEC 2021 to 30 DEC 2021

EC-1, 02 DEC 2021 to 30 DEC 2021

WAAS CH 48826 W09A	APP CRS 092°	Rwy Idg TDZE Apt Elev	4699 774 774
--	------------------------	-----------------------------	---

RNAV (GPS) RWY 9

GLADWIN ZETTEL MEML (GDW)

RNP APCH.

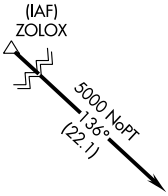
▽ Circling NA to Rwy 15 and 33. Rwy 9 helicopter visibility reduction below 1 SM NA. DME/DME RNP-0.3 NA. Procedure NA at night. Use Mount Pleasant altimeter setting; when not received, use Midland altimeter setting and increase all MDA 20 feet; increase LP and LNAV Cats C/D visibility $\frac{1}{8}$ SM.

▲ NA

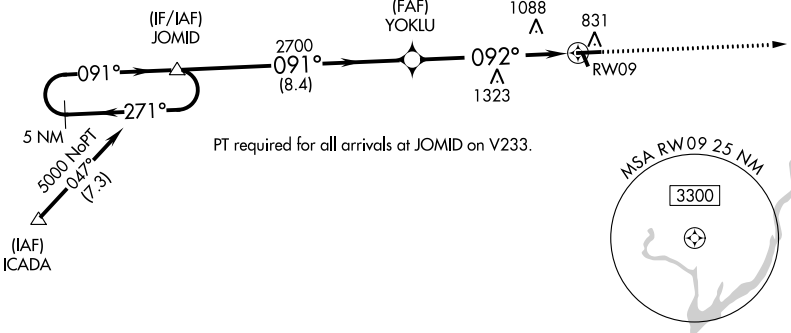
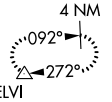
MISSED APPROACH: Climb to 3000 direct WELVI and hold.

GREAT LAKES APP CON ★
126.45 235.625

UNICOM
122.8 (CTAF) 0



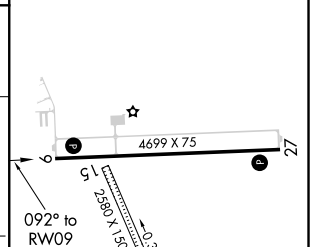
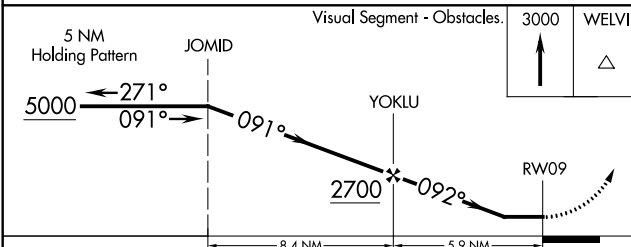
MISSED APCH FIX



EC-1, 02 DEC 2021 to 30 DEC 2021

EC-1, 02 DEC 2021 to 30 DEC 2021

ELEV 774	TDZE 774
-----------------	-----------------



CATEGORY	A	B	C	D
LP MDA	1440-1	666 (700-1)	1440-1 $\frac{7}{8}$	666 (700-1 $\frac{1}{8}$)
LNAV MDA	1440-1	666 (700-1)	1440-1 $\frac{7}{8}$	666 (700-1 $\frac{1}{8}$)
CIRCLING	1440-1 666 (700-1)	1500-1 726 (800-1)	1520-2 $\frac{1}{4}$ 746 (800-2 $\frac{1}{4}$)	1700-3 926 (1000-3)

REIL Rwy 9 and 27 **0**
MIRL Rwy 9-27 **0**