

LOC I-GKJ 108.5	APP CRS 249°	Rwy Idg 5001
		TDZE 1399
		Apt Elev 1399

LOC RWY 25

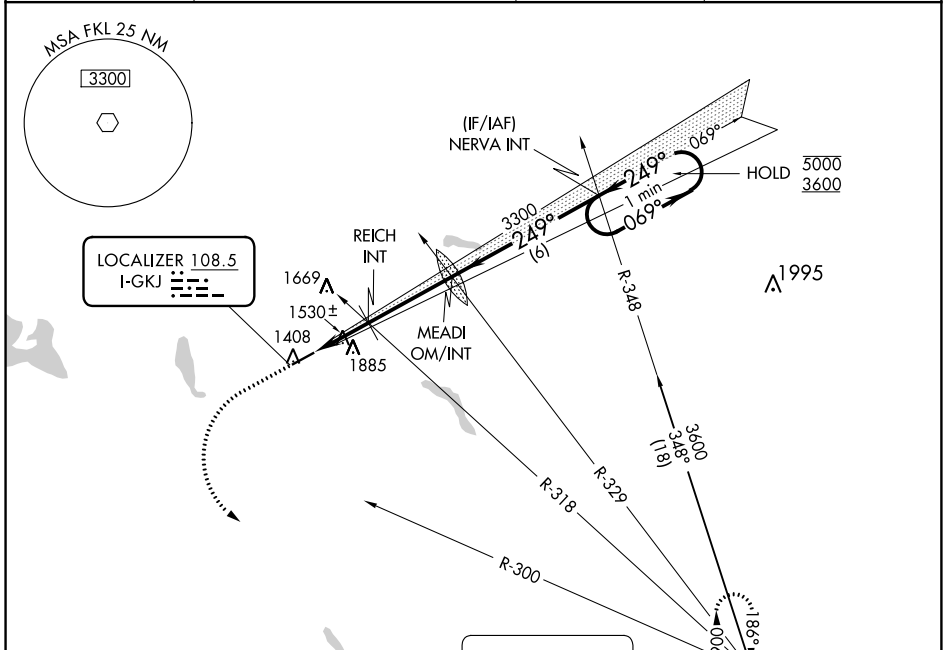
PORT MEADVILLE (GKJ)

RADAR required.

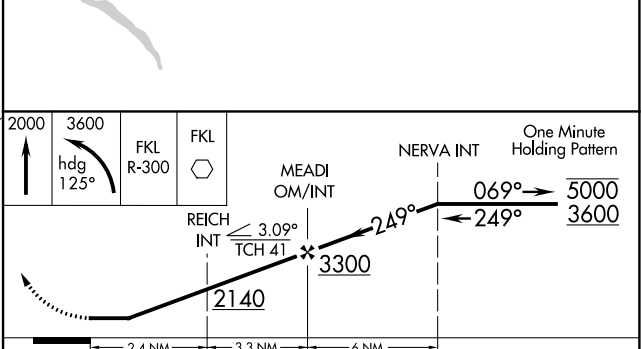
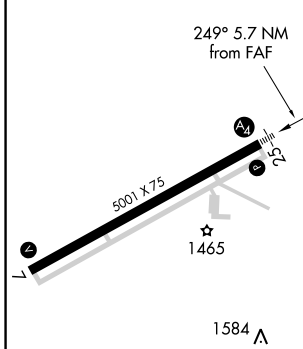
⚠ Inop table does not apply.
 ⚠ Rwy 25 helicopter visibility reduction below 3/4 SM NA.

MALS MISSED APPROACH: Climb to 2000 then climbing left turn to 3600 on heading 125° and FKL VOR R-300 to FKL VOR and hold.

ASOS 121.425	YOUNGSTOWN APP CON* 133.95 322.3	CLNC DEL 124.95	UNICOM 123.0 (CTAF) 0
------------------------	--	---------------------------	---------------------------------



ELEV 1399	TDZE 1399
-----------	-----------



CATEGORY	A	B	C	D
S-LOC 25	1780-1	381 (400-1)	1780-1 7/8	381 (400-1 7/8)
CIRCLING	1900-1 501 (600-1)	2240-1 1/4 841 (900-1 1/4)	2240-2 1/2 841 (900-2 1/2)	2240-2 3/4 841 (900-2 3/4)

MEADVILLE, PENNSYLVANIA
 Amdt 6E 19JUL18

41°38'N-80°13'W

PORT MEADVILLE (GKJ)

LOC RWY 25

NE-4, 08 SEP 2022 to 06 OCT 2022

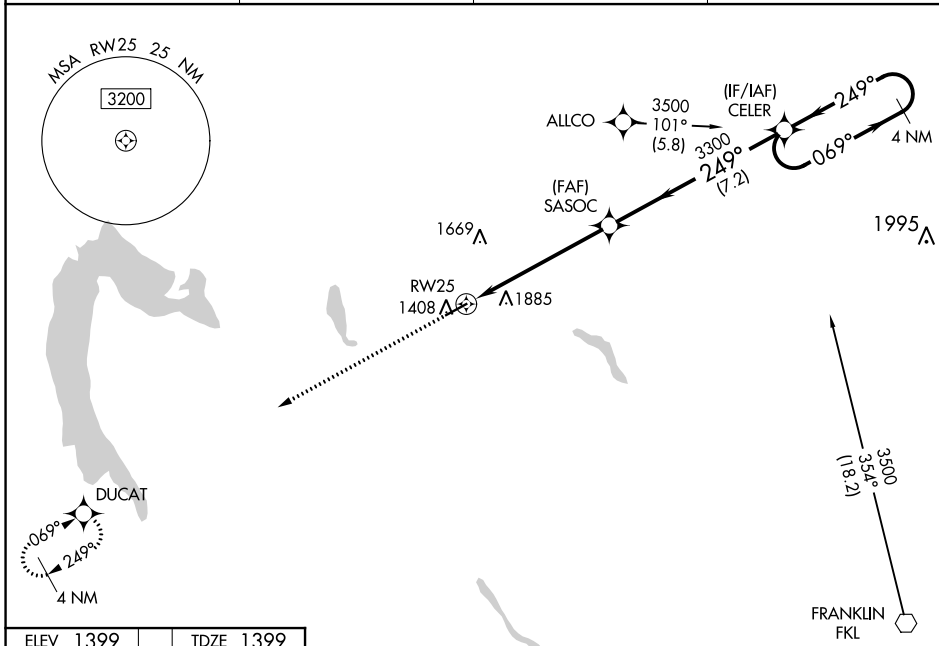
NE-4, 08 SEP 2022 to 06 OCT 2022

WAAS CH 45924 W25A	APP CRS 249°	Rwy ldg TDZE Apt Elev	5001 1399 1399
--	------------------------	-----------------------------	---

RNAV (GPS) RWY 25

PORT MEADVILLE (GKJ)

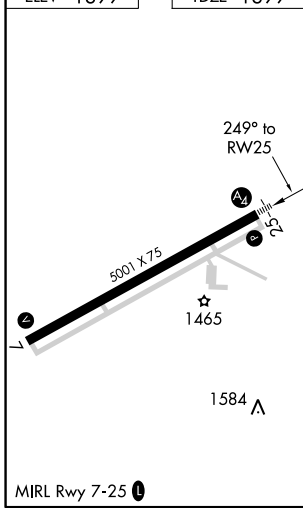
RNP APCH.		MALS	MISSED APPROACH: Climb to 3000 direct DUCAT and hold.
<p>⚠ Inop table does not apply to LP Cats A and B, and LNAV Cat A. For inop ALS increase LNAV Cats C and D visibility to 2 SM.</p>			
ASOS 121.425	YOUNGSTOWN APP CON * 133.95 322.3	CLNC DEL 124.95	UNICOM 123.0 (CTAF) 0



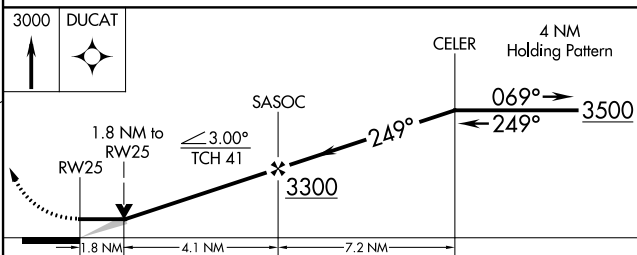
NE-4, 08 SEP 2022 to 06 OCT 2022

NE-4, 08 SEP 2022 to 06 OCT 2022

ELEV 1399	TDZE 1399
-----------	-----------



Procedure NA for arrival on FKL VOR airway radials 280 CW 056.



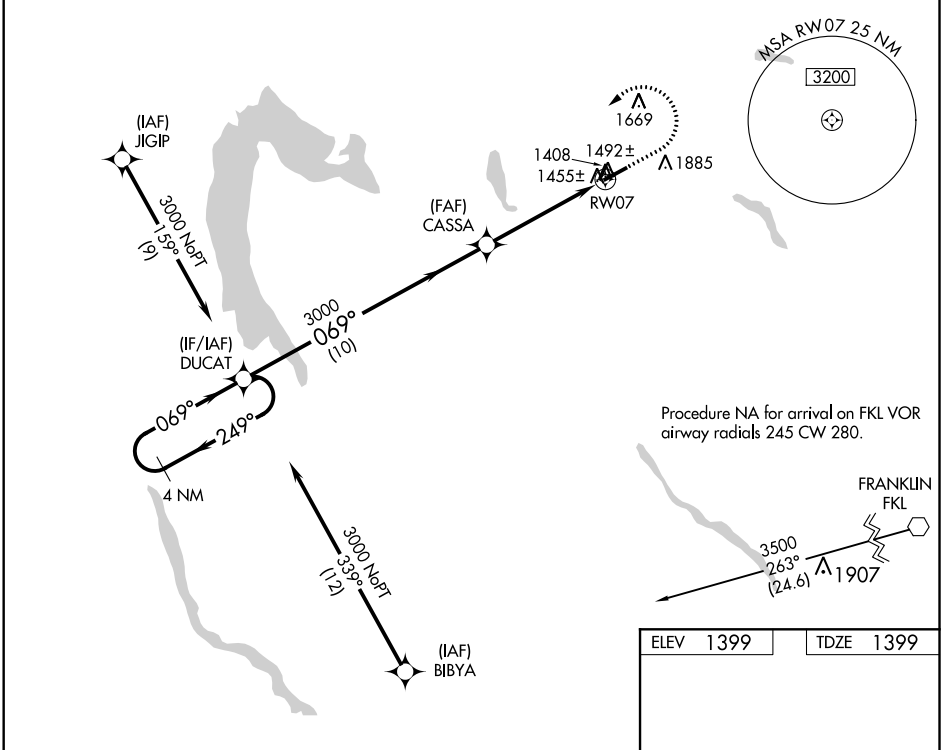
CATEGORY		A	B	C	D
LP	MDA	2060-1	661 (700-1)	2060-1½	661 (700-1½)
	LNAV MDA	2140-1	741 (800-1)	2140-1¾	741 (800-1¾)
	CIRCLING	2140-1 741 (800-1)	2240-1¼ 841 (900-1¼)	2240-2½ 841 (900-2½)	2240-2¾ 841 (900-2¾)

WAAS CH 53724 W07A	APP CRS 069°	Rwy Idg TDZE Apt Elev	5001 1399 1399
--	------------------------	-----------------------------	---

RNAV (GPS) RWY 7

PORT MEADVILLE (GKJ)

RNP APCH.		MISSED APPROACH: Climb to 1900 then climbing left turn to 3100 direct DUCAT and hold.	
Rwy 7 helicopter visibility reduction below 3/4 SM NA.			
ASOS 121.425	YOUNGSTOWN APP CON * 133.95 322.3	CLNC DEL 124.95	UNICOM 123.0 (CTAF)



NE-4, 08 SEP 2022 to 06 OCT 2022

NE-4, 08 SEP 2022 to 06 OCT 2022

4 NM Holding Pattern	DUCAT	CASSA	1900	3100	DUCAT
	3000 ← 249° / 069° →	3000	1900	3100	DUCAT
		10 NM		3.9 NM	
		1 NM		1 NM	
CATEGORY	A	B	C	D	
LP MDA	1760-1		361 (400-1)		
LNVA MDA	1860-1	461 (500-1)	1860-1 3/8	461 (500-1 3/8)	
CIRCLING	1900-1 501 (600-1)	2240-1 1/4 841 (900-1 1/4)	2240-2 1/2 841 (900-2 1/2)	2240-2 3/4 841 (900-2 3/4)	

