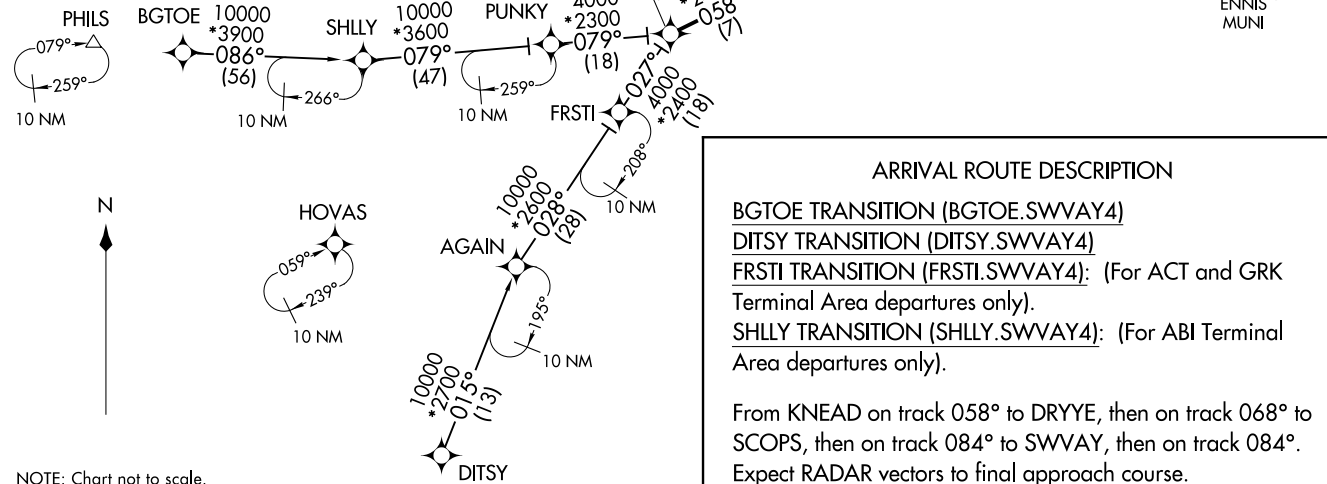


SWWAY FOUR ARRIVAL (RNAV)
 (KNEAD.SWWAY4) 26MAY16

(KNEAD.SWWAY4) 23222
 SWWAY FOUR ARRIVAL (RNAV)

REGIONAL APP CON
 135.975 379.9
 ADS ATIS
 133.4
 DAL D-ATIS
 120.15
 FWS ATIS
 120.025
 RBD ATIS
 126.35
 TKI ATIS
 119.925

- NOTE: RADAR required.
- NOTE: RNAV 1.
- NOTE: DME/DME/IRU or GPS required.
- NOTE: DAL ARRIVALS: Props only. Turbojet aircraft file and expect the BACHR or DRYYE RNAV STARS.
- NOTE: Props exempt from speed restriction at KNEAD.
- NOTE: When DFW is in south flow, turbojets expect to cross KNEAD at 10000.
- NOTE: When DFW is in north flow, turbojets expect to cross KNEAD at 12000.



ARRIVAL ROUTE DESCRIPTION

BGTOE TRANSITION (BGTOE.SWWAY4)
DITSY TRANSITION (DITSY.SWWAY4)
FRSTI TRANSITION (FRSTI.SWWAY4): (For ACT and GRK Terminal Area departures only).
SHLLY TRANSITION (SHLLY.SWWAY4): (For ABI Terminal Area departures only).

From KNEAD on track 058° to DRYYE, then on track 068° to SCOPS, then on track 084° to SWWAY, then on track 084°.
 Expect RADAR vectors to final approach course.

NOTE: Chart not to scale.

DALLAS, TEXAS

DALLAS, TEXAS

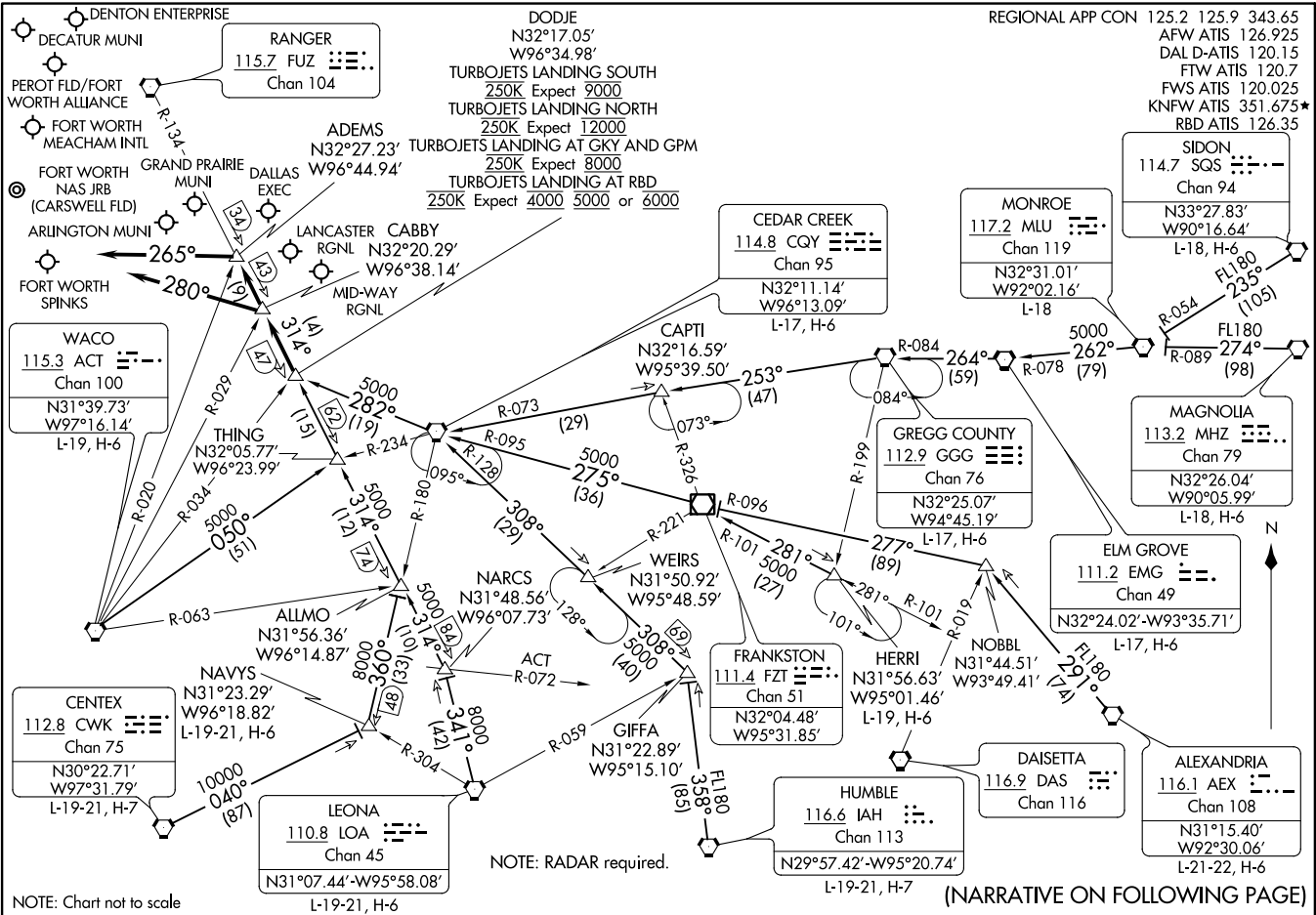
AL-768 (FAA)

REGIONAL APP CON	125.2	125.9	343.65
AFW ATIS	126.925		
DAL D-ATIS	120.15		
FTW ATIS	120.7		
FWS ATIS	120.025		
KNFW ATIS	351.675*		
RBD ATIS	126.35		

(DODJIE: DODJIE6) 23054
 DODJIE SIX ARRIVAL

AL-6918 (FAA)

DALLAS-FORT WORTH, TEXAS



(DODJIE: DODJIE6) 21MAY20
 DODJIE SIX ARRIVAL

DALLAS-FORT WORTH, TEXAS

NOTE: Chart not to scale

NOTE: RADAR required.

(NARRATIVE ON FOLLOWING PAGE)

ARRIVAL ROUTE DESCRIPTION

ALEXANDRIA TRANSITION (AEX.DODJE6): From over AEX VORTAC on AEX R-291 to NOBBL, then on FZT R-096 to FZT VOR/DME, then on FZT R-275 and CQY R-095 to CQY VORTAC, then on CQY R-282 to DODJE. Thence

CEDAR CREEK TRANSITION (CGY.DODJE6): From over CQY VORTAC on CQY R-282 to DODJE. Thence. . . .

CENTEX TRANSITION (CWK.DODJE6): From over CWK VORTAC on CWK R-040 to NAVYS, then on CQY R-180 to ALLMO, then on FUZ R-134 to DODJE. Thence

ELM GROVE TRANSITION (EMG.DODJE6): From over EMG VORTAC on EMG R-264 and GGG R-084 to GGG VORTAC, then on GGG R-253 and CQY R-073 to CAPTI, then on CQY R-073 to CQY VORTAC, then on CQY R-282 to DODJE. Thence

GREGG COUNTY TRANSITION (GGG.DODJE6): From over GGG VORTAC on GGG R-253 and CQY R-073 to CAPTI, then on CQY R-073 to CQY VORTAC, then on CQY R-282 to DODJE. Thence

HERRI TRANSITION (HERRI.DODJE6): From over HERRI on FZT R-101 to FZT VOR/DME, then on FZT R-275 and CQY R-095 to CQY VORTAC, then on CQY R-282 to DODJE. Thence

HUMBLE TRANSITION (IAH.DODJE6): From over IAH VORTAC on IAH R-358 to GIFFA, then on CQY R-128 to CQY VORTAC, then on CQY R-282 to DODJE. Thence

LEONA TRANSITION (LOA.DODJE6): From over LOA VORTAC on LOA R-341 to NARCS, then on FUZ R-134 to DODJE. Thence

MAGNOLIA TRANSITION (MHZ.DODJE6): From over MHZ VORTAC on MHZ R-274 and MLU R-089 to MLU VORTAC, then on MLU R-262 and EMG R-078 to EMG VORTAC, then on EMG R-264 and GGG R-084 to GGG VORTAC, then on GGG R-253 and CQY R-073 to CAPTI, then on CQY R-073 to CQY VORTAC, then on CQY R-282 to DODJE. Thence

MONROE TRANSITION (MLU.DODJE6): From over MLU VORTAC on MLU R-262 and EMG R-078 to EMG VORTAC, then on EMG R-264 and GGG R-084 to GGG VORTAC, then on GGG R-253 and CQY R-073 to CAPTI, then on CQY R-073 to CQY VORTAC, then on CQY R-282 to DODJE. Thence

NAVYS TRANSITION (NAVYS.DODJE6): From over NAVYS on CQY R-180 to ALLMO, then on FUZ R-134 to DODJE. Thence

SIDON TRANSITION (SQS.DODJE6): From over SQS VORTAC on SQS R-235 and MLU R-054 to MLU VORTAC, then on MLU R-262 and EMG R-078 to EMG VORTAC, then on EMG R-264 and GGG R-084 to GGG VORTAC, then on GGG R-253 and CQY R-073 to CAPTI, then on CQY R-073 to CQY VORTAC, then on CQY R-282 to DODJE. Thence

WACO TRANSITION (ACT.DODJE6): From over ACT VORTAC on ACT R-050 and CQY R-234 to THING, then on FUZ R-134 to DODJE. Thence

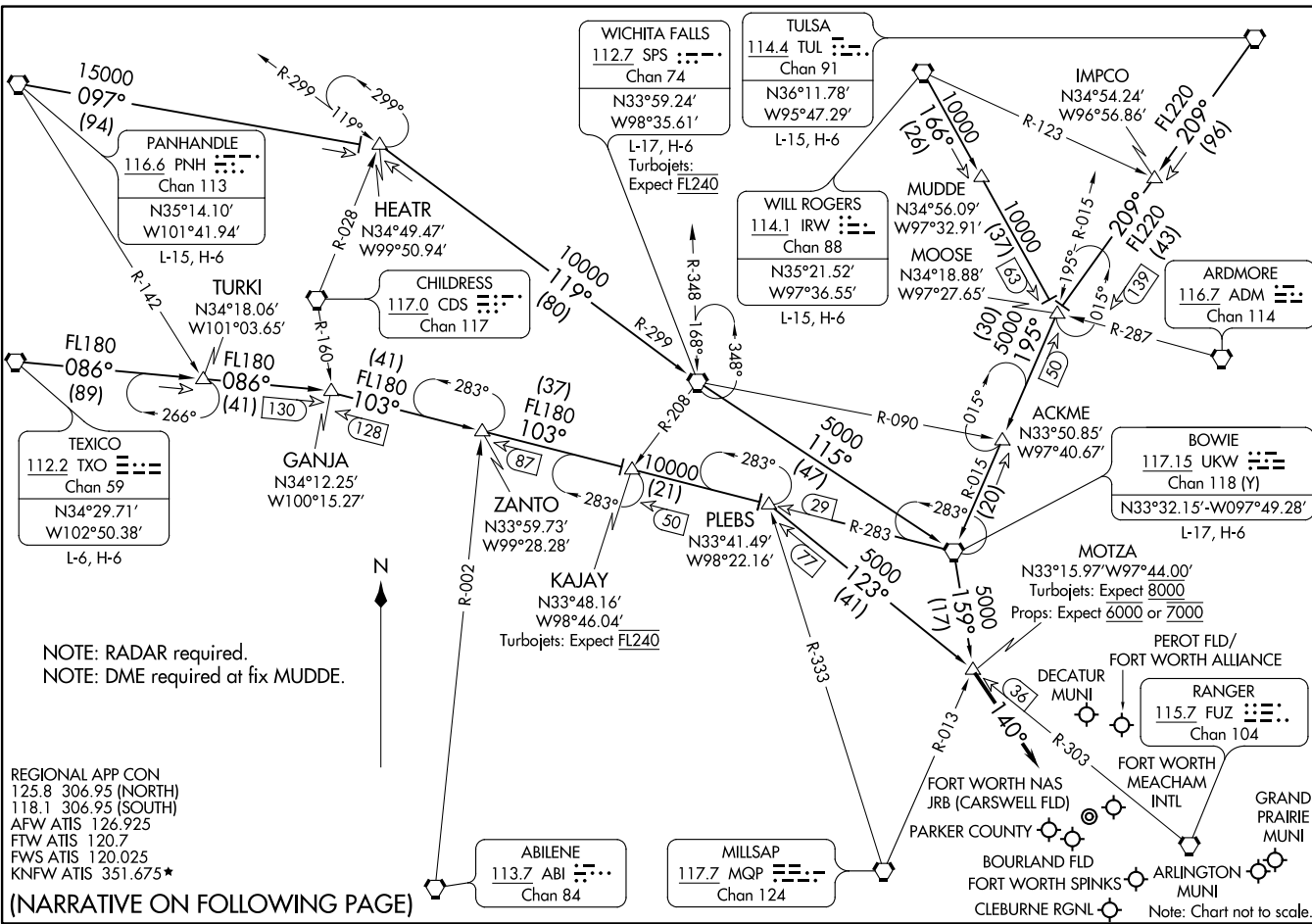
. . . . from over DODJE on FUZ R-134 to CABBYP or ADEMS (when directed by ATC).
Depart CABBYP heading 280°. Expect RADAR vectors to final approach course.
Depart ADEMS heading 265°. Expect RADAR vectors to final approach course.

MOTZA ONE ARRIVAL
(MOTZA,MOTZA1) 17JUN21

MOTZA ONE ARRIVAL
(MOTZA,MOTZA1) 22Z251

AL-6918 (FAA)

FORT WORTH, TEXAS



FORT WORTH, TEXAS

ARRIVAL ROUTE DESCRIPTION

BOWIE TRANSITION (UKW.MOTZA1): From over UKW VORTAC on UKW R-159 to MOTZA. Thence

MUDDE TRANSITION (MUDDE.MOTZA1): From over MUDDE on IRW R-166 to MOOSE, then on UKW R-015 to UKW VORTAC, then on UKW R-159 to MOTZA. Thence

PANHANDLE TRANSITION (PNH.MOTZA1): From over PNH VORTAC on PNH R-097 to HEATR, then on SPS R-299 to SPS VORTAC, then on SPS R-115 and UKW R-299 to UKW VORTAC, then on UKW R-159 to MOTZA. Thence

TEXICO TRANSITION (TXO.MOTZA1): From over TXO VORTAC on TXO R-086 to GANJA, then on UKW R-283 to PLEBS, then on FUZ R-303 to MOTZA. Thence

TULSA TRANSITION (TUL.MOTZA1): From over TUL VORTAC on TUL R-209 to MOOSE, then on UKW R-015 to UKW VORTAC, then on UKW R-159 to MOTZA. Thence

TURKI TRANSITION (TURKI.MOTZA1): From over TURKI on TXO R-086 to GANJA, then on UKW R-283 to PLEBS, then on FUZ R-303 to MOTZA. Thence

WICHITA FALLS TRANSITION (SPS.MOTZA1): From over SPS VORTAC on SPS R-115 and UKW R-299 to UKW VORTAC, then on UKW R-159 to MOTZA. Thence

WILL ROGERS TRANSITION (IRW.MOTZA1): From over IRW VORTAC on IRW R-166 to MOOSE, then on UKW R-015 to UKW VORTAC, then on UKW R-159 to MOTZA. Thence

. . . . From over MOTZA heading 140° for vectors to final approach course.

SC-2, 22 FEB 2024 to 21 MAR 2024

SC-2, 22 FEB 2024 to 21 MAR 2024

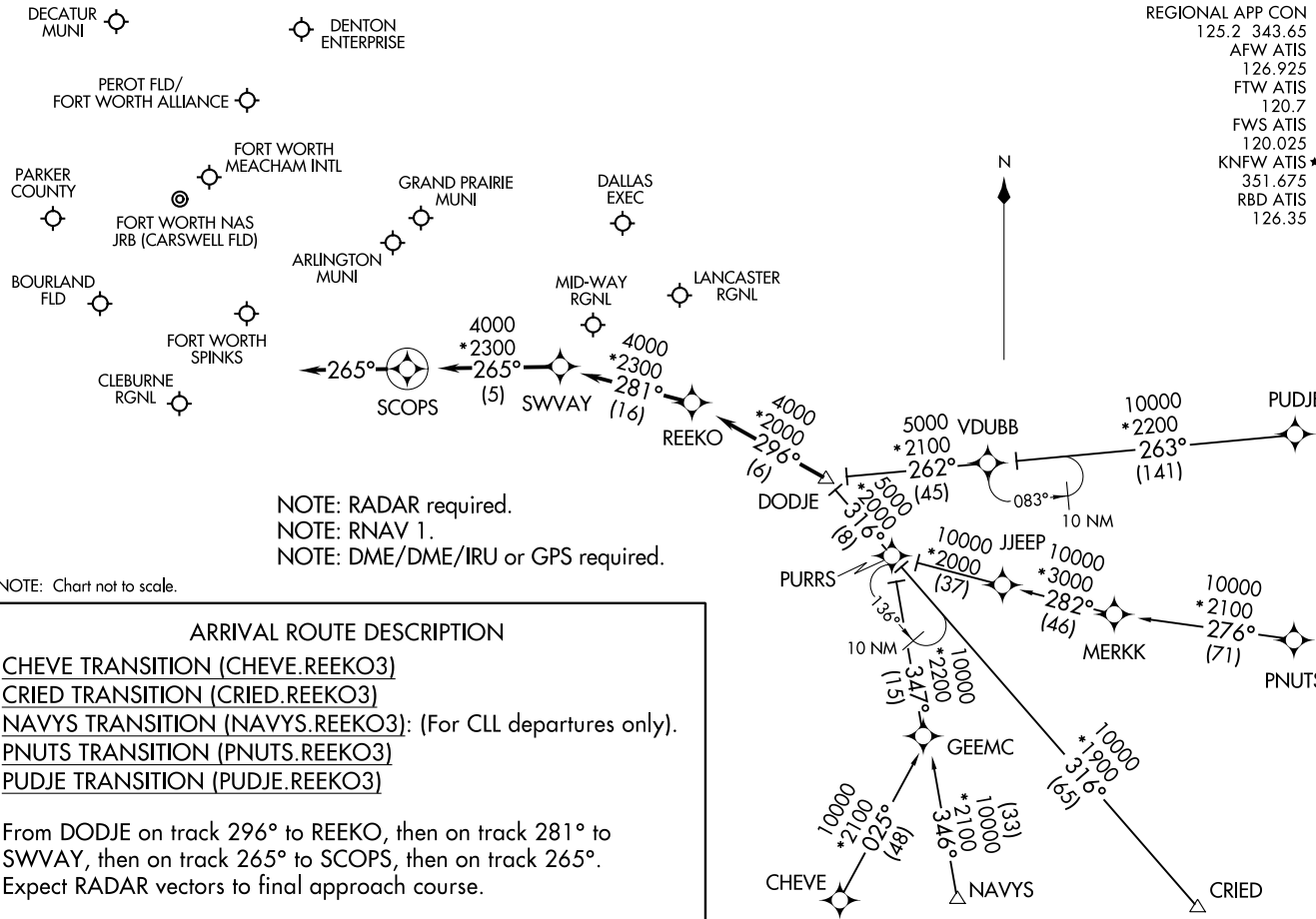
REEKO THREE ARRIVAL (RNAV)
(DODJE.REEK03) 26MAY16

REEKO THREE ARRIVAL (RNAV)
(DODJE.REEK03) 23222

AL-6918 (FAA)

FORT WORTH, TEXAS

REGIONAL APP CON	125.2	343.65
AFW ATIS	126.925	
FTW ATIS	120.7	
FWS ATIS	120.025	
KNFW ATIS*	351.675	
RBD ATIS	126.35	



NOTE: RADAR required.
 NOTE: RNAV 1.
 NOTE: DME/DME/IRU or GPS required.

NOTE: Chart not to scale.

ARRIVAL ROUTE DESCRIPTION

- CHEVE TRANSITION (CHEVE.REEK03)
- CRIED TRANSITION (CRIED.REEK03)
- NAVYS TRANSITION (NAVYS.REEK03): (For CLL departures only).
- PNUTS TRANSITION (PNUTS.REEK03)
- PUDJE TRANSITION (PUDJE.REEK03)

From DODJE on track 296° to REEKO, then on track 281° to SWVAY, then on track 265° to SCOPS, then on track 265°.
 Expect RADAR vectors to final approach course.

FORT WORTH, TEXAS

SASIE SEVEN ARRIVAL
(SASIE: SASIE7) 29DEC22

(SASIE: SASIE7) 22363
SASIE SEVEN ARRIVAL

AL-6918 (FAA)

DALLAS-FORT WORTH, TEXAS

REGIONAL APP CON
124.3 282.275
ADS ATIS
133.4
AFW ATIS
126.925
FTW ATIS
120.7
FWS ATIS
120.025
KNFW ATIS*
351.675

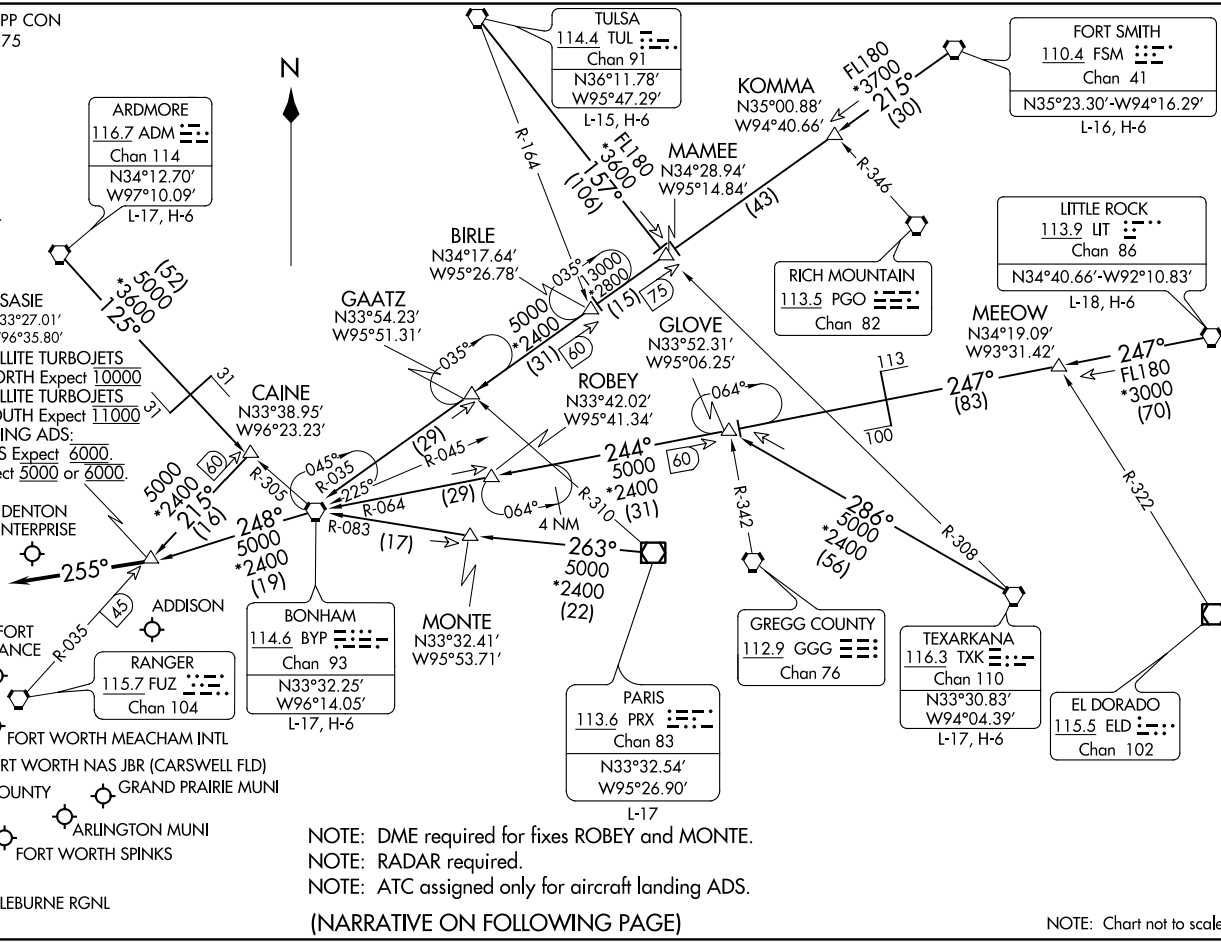
WEST SATELLITE TURBOJETS
LANDING NORTH Expect 10000
WEST SATELLITE TURBOJETS
LANDING SOUTH Expect 11000
LANDING ADS:
TURBOJETS Expect 6000
PROPS Expect 5000 or 6000.

DENTON ENTERPRISE
DECATUR MUNI

PEROT FLD/FORT WORTH ALLIANCE

FORT WORTH MEACHAM INTL
FORT WORTH NAS JBR (CARSWELL FLD)
PARKER COUNTY
BOURLAND FLD
ARLINGTON MUNI
FORT WORTH SPINKS
CLEBURNE RGNL

ARDMORE
116.7 ADM
Chan 114
N34°12.70'
W97°10.09'
L-17, H-6



NOTE: DME required for fixes ROBEY and MONTE.
NOTE: RADAR required.
NOTE: ATC assigned only for aircraft landing ADS.

(NARRATIVE ON FOLLOWING PAGE)

NOTE: Chart not to scale.

ARRIVAL ROUTE DESCRIPTION

ARDMORE TRANSITION (ADM.SASIE7): From over ADM VORTAC on ADM R-125 and BYP R-305 to CAINE, then on FUZ R-035 to SASIE. Thence

BONHAM TRANSITION (BYP.SASIE7): From over BYP VORTAC on BYP R-248 to SASIE. Thence

CAINE TRANSITION (CAINE.SASIE7): From over CAINE on FUZ VORTAC R-035 to SASIE. Thence

FORT SMITH TRANSITION (FSM.SASIE7): From over FSM VORTAC on FSM R-215 to MAMEE, then on BYP R-035 to BYP VORTAC, then on BYP R-248 to SASIE. Thence

LITTLE ROCK TRANSITION (LIT.SASIE7): From over LIT VORTAC on LIT R-247 to MEEOW, then on LIT R-247 and BYP R-064 to GLOVE, then on BYP R-064 to BYP VORTAC, then on BYP R-248 to SASIE. Thence

PARIS TRANSITION (PRX.SASIE7): From over PRX VOR/DME on PRX R-263 and BYP R-083 to MONTE, then on BYP R-083 to BYP VORTAC, then on BYP R-248 to SASIE. Thence

TEXARKANA TRANSITION (TXK.SASIE7): From over TXK VORTAC on TXK R-286 to GLOVE, then on BYP R-064 to BYP VORTAC, then on BYP R-248 to SASIE. Thence

TULSA TRANSITION (TUL.SASIE7): From over TUL VORTAC on TUL R-157 to MAMEE, then on BYP R-035 to BYP VORTAC, then on BYP R-248 to SASIE. Thence

. . . . from SASIE, then on heading 255° or as assigned by ATC. Expect RADAR vectors to final approach course.

SC-2, 22 FEB 2024 to 21 MAR 2024

SC-2, 22 FEB 2024 to 21 MAR 2024

TRUUK TWO ARRIVAL (RNAV)

DALLAS-FORT WORTH, TEXAS

REGIONAL APP CON
 118.1 306.95
 AFW ATIS
 126.925
 FTW ATIS
 120.7
 FWS ATIS
 120.025
 KNFW ATIS ★
 351.675

NOTE: RADAR required.
 NOTE: RNAV 1.
 NOTE: DME/DME/IRU or GPS required.

SASIE
 VERTICAL NAVIGATION
 PLANNING INFORMATION

TURBOJETS NORTH FLOW:

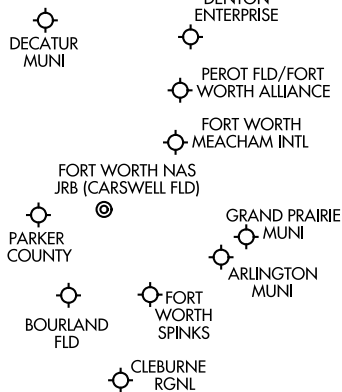
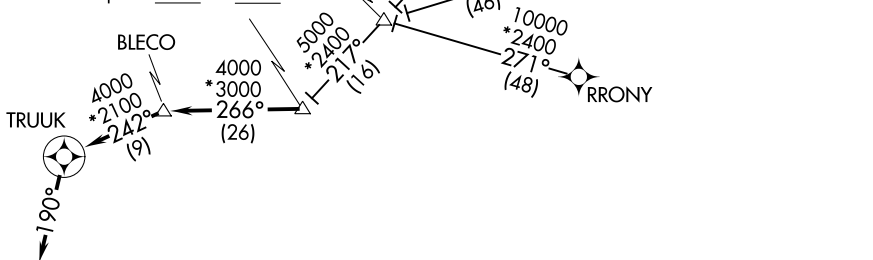
Expect 10000

TURBOJETS SOUTH FLOW:

Expect 11000

PROPS:

Expect 5000 or 6000



NOTE: Chart not to scale.

ARRIVAL ROUTE DESCRIPTION

AXxee TRANSITION (AXxee.TRUUK2): (For aircraft filing FL230 and below).

HITUG TRANSITION (HITUG.TRUUK2)

PONY TRANSITION (PONY.TRUUK2)

RRNET TRANSITION (RRNET.TRUUK2)

RRONY TRANSITION (RRONY.TRUUK2): (For aircraft filing FL230 and below).

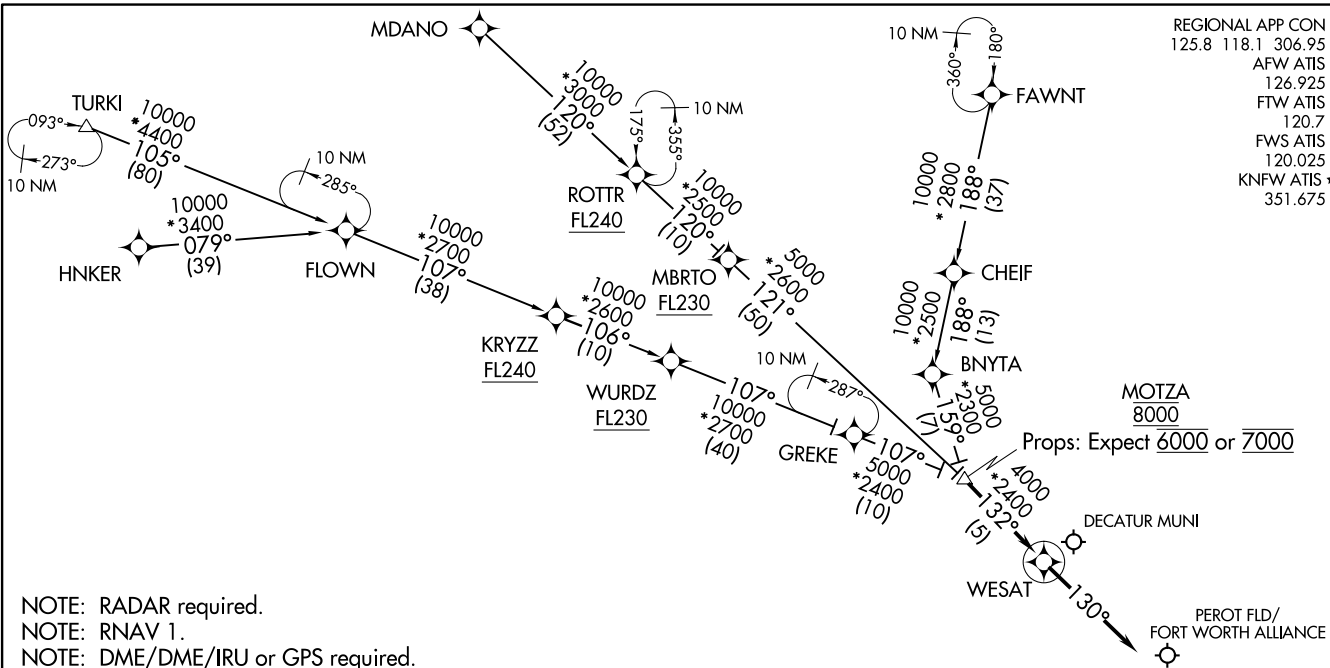
From SASIE on track 266° to BLECO, then on track 242° to TRUUK, then on track 190°. Expect RADAR vectors to final approach course.

WESAT TWO ARRIVAL (RNAV)
(MOTZA, WESAT2) 25JUN15

(MOTZA, WESAT2) 23222
WESAT TWO ARRIVAL (RNAV)

AL-6918 (FAA)

REGIONAL APP CON
125.8 118.1 306.95
AFW ATIS
126.925
FTW ATIS
120.7
FWS ATIS
120.025
KNFW ATIS *
351.675



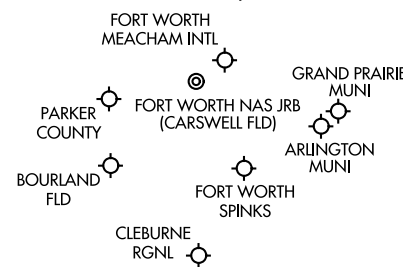
ARRIVAL ROUTE DESCRIPTION

- FAWNT TRANSITION (FAWNT.WESAT2)
- HNKER TRANSITION (HNKER.WESAT2)
- MDANO TRANSITION (MDANO.WESAT2)
- TURKI TRANSITION (TURKI.WESAT2)

From MOTZA on track 132° to WESAT, then on track 130°.
Expect RADAR vectors to final approach course.



NOTE: Chart not to scale.



DALLAS-FORT WORTH, TEXAS

DALLAS-FORT WORTH, TEXAS