

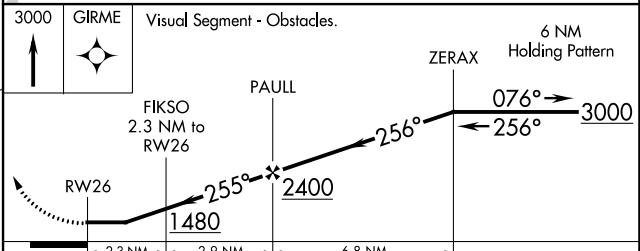
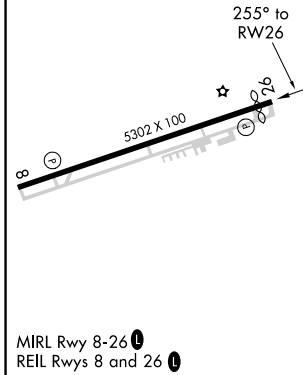
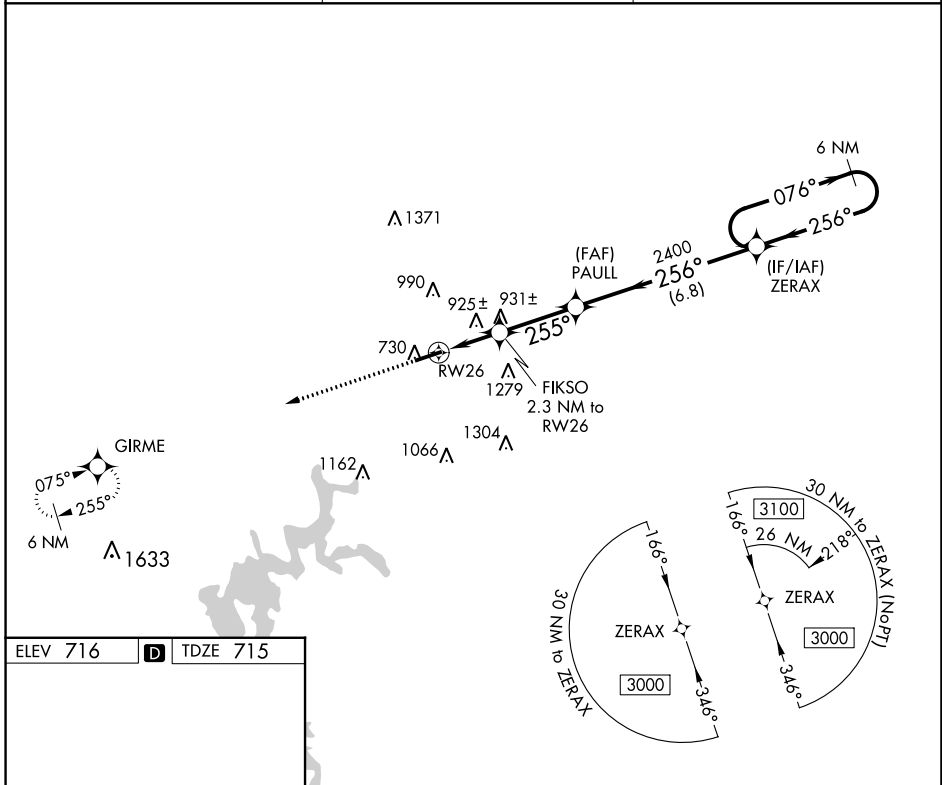
APP CRS	Rwy Idg	<b>5000</b>
<b>255°</b>	TDZE	<b>715</b>
	Apt Elev	<b>716</b>

# RNAV (GPS) RWY 26

GLASGOW MUNI (GLW)

RNP APCH - GPS.	<p><b>▼</b> Helicopter visibility reduction below 3/4 SM NA. When local altimeter setting not received, use Bowling Green altimeter setting and increase all MDAs 80 feet; increase LNAV Cat C and D visibility 1/4 SM, and Circling visibility Cat C, D 1/4 SM.</p>	<p><b>MISSED APPROACH:</b> Climb to 3000 direct GIRME and hold.</p>
-----------------	--	---

AWOS-3 <b>118.525</b>	MEMPHIS CENTER <b>132.9 290.3</b>	UNICOM <b>122.8 (CTAF) 0</b>
--------------------------	--------------------------------------	---------------------------------



CATEGORY	A	B	C	D
LNAV MDA	1200-1	485 (500-1)	1200-1 3/8	485 (500-1 3/8)
CIRCLING	1220-1 504 (600-1)	1260-1 544 (600-1)	1580-2 1/2 864 (900-2 1/2)	1580-2 3/4 864 (900-2 3/4)

SE-1, 22 FEB 2024 to 21 MAR 2024

SE-1, 22 FEB 2024 to 21 MAR 2024

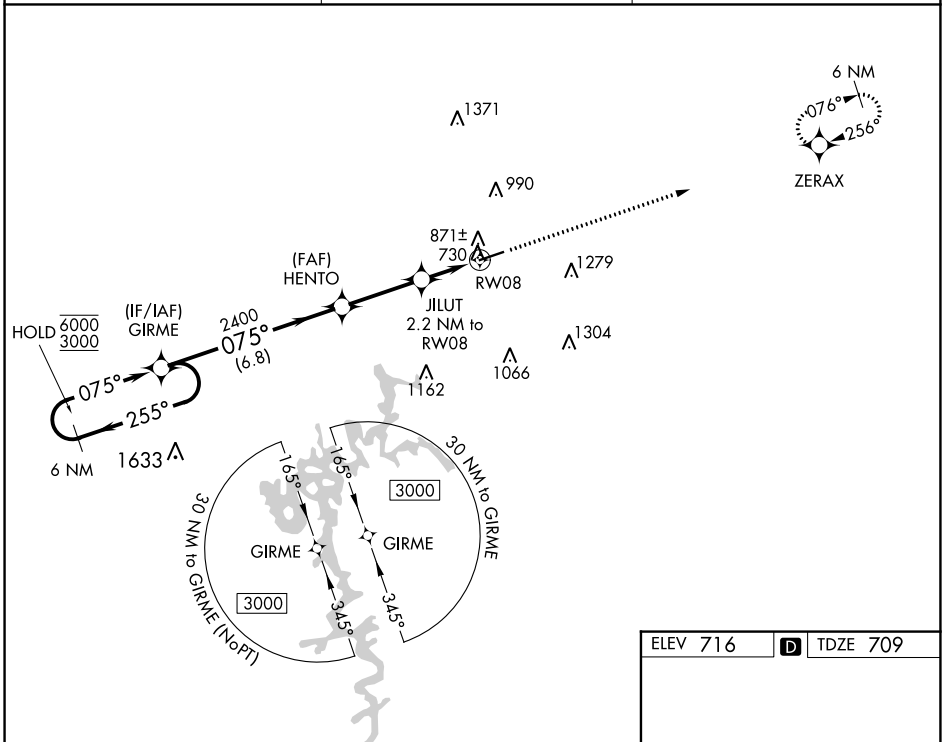
WAAS CH <b>77607</b> <b>W08A</b>	APP CRS <b>075°</b>	Rwy Idg TDZE Apt Elev	<b>5000</b> <b>709</b> <b>716</b>
--	------------------------	-----------------------------	---

# RNAV (GPS) RWY 8

GLASGOW MUNI (GLW)

RNP APCH.	MISSED APPROACH: Climb to 3000 direct ZERAX and hold.
<p>▼ ▲ For uncompensated Baro-VNAV systems, LNAV/VNAV NA below -16°C or above 54°C.</p>	

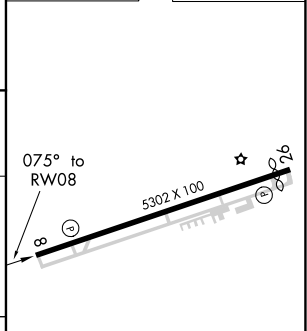
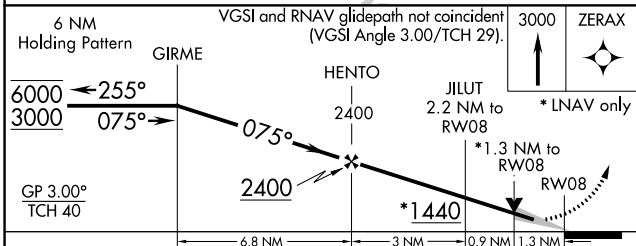
AWOS-3 <b>118.525</b>	MEMPHIS CENTER <b>132.9 290.3</b>	UNICOM <b>122.8 (CTAF)</b> <b>1</b>
--------------------------	--------------------------------------	--



SE-1, 22 FEB 2024 to 21 MAR 2024

SE-1, 22 FEB 2024 to 21 MAR 2024

ELEV 716	<b>D</b> TDZE 709
----------	-------------------



		6.8 NM		3 NM		0.9 NM		1.3 NM	
CATEGORY		A	B	C	D				
LPV DA		971-1		262 (300-1)					
LNAV/VNAV DA		1125-1 3/8		416 (500-1 3/8)					
LNAV MDA		1140-1	431 (500-1)	1140-1 1/4	431 (500-1 1/4)				

MIRL Rwy 8-26 **1**  
REIL Rwy 8 and 26 **1**