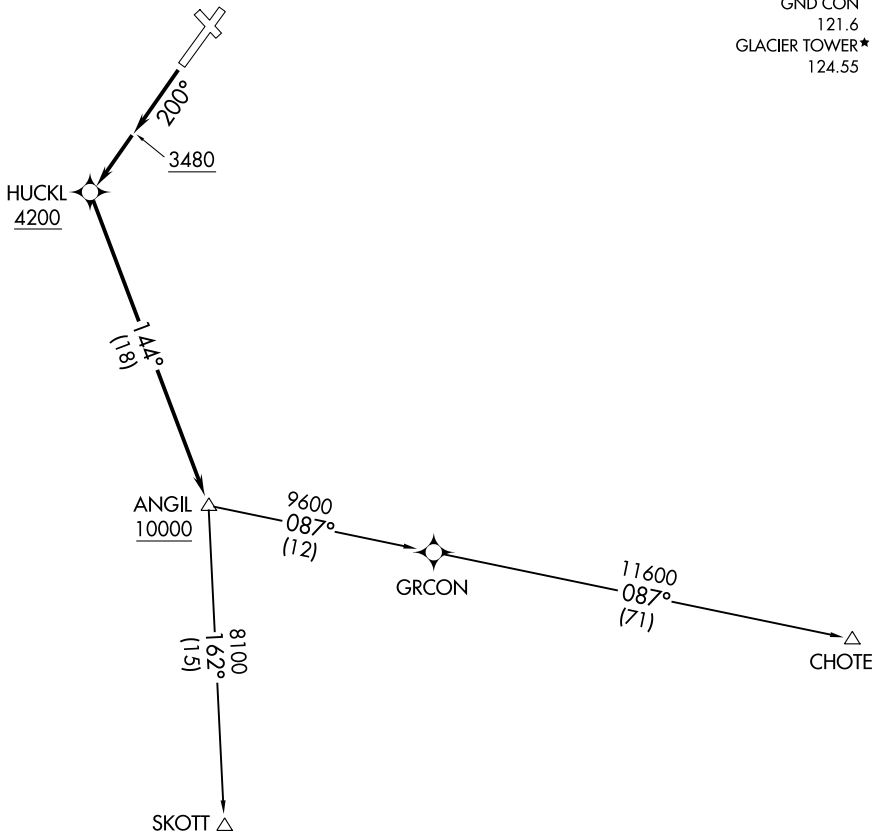


**TOP ALTITUDE:
ASSIGNED BY ATC**

SALT LAKE CENTER
127.075 244.875
ATIS
132.625
GND CON
121.6
GLACIER TOWER*
124.55



NW-1, 22 FEB 2024 to 21 MAR 2024

NW-1, 22 FEB 2024 to 21 MAR 2024

NOTE: GPS required.
NOTE: RNAV 1.
NOTE: Chart not to scale.

TAKEOFF MINIMUMS
Rwys 2, 12, 30: NA - ATC.
Rwy 20: Standard with minimum climb of 500' per NM to 3480.

DEPARTURE ROUTE DESCRIPTION

TAKEOFF RUNWAY 20: Climb heading 200° to 3480, then climb direct to cross HUCKL at or above 4200, then on track 144° to cross ANGIL at or above 10000, thence. . . .

. . . .on (transition). Maintain ATC assigned altitude. Expect filed altitude five minutes after departure.

CHOTE TRANSITION (GPI1.CHOTE)

SKOTT TRANSITION (GPI1.SKOTT)

(RIDDG1.RIDDG) 23278

RIDDG ONE DEPARTURE (RNAV)

GLACIER PARK INTL (GPI)
KALISPELL, MONTANA
RNAV 1 - GPS.

AL-887 (FAA)

SALT LAKE CENTER
127.075 244.875
ATIS
132.625
GND CON
121.6
GLACIER TOWER *
124.55

**TOP ALTITUDE:
AS ASSIGNED BT ATC**

KECEK
7000 230K

EEVEL
8000

DAACE
6300

KNEVL

PYGMY
8300

RIDDG
9000

DRDVL

8200
*7700

△ SKOTT

MISSOULA
MSO

MULLAN PASS
MLP

NOTE: Chart not to scale.

TAKEOFF MINIMUMS

Rwys 12, 30: NA - Environmental.
Rwy 2: Standard with minimum climb of 383' per NM to 6500.
Rwy 20: Standard with minimum climb of 275' per NM to 6500.

NW-1, 22 FEB 2024 to 21 MAR 2024

NW-1, 22 FEB 2024 to 21 MAR 2024

DEPARTURE ROUTE DESCRIPTION

TAKEOFF RUNWAY 2: Climb on heading 020° to intercept course 290° to cross KECEK at or above 7000, then on track 216° to cross EEVEL at or above 8000, then on track 167° to KNEVL, then on track 215° to cross RIDDG at 9000, thence. . .

TAKEOFF RUNWAY 20: Climb on heading 200° to 3480, then right turn direct to cross DAACE at or above 6300, then on track 208° to cross PYGMY at or above 8300, then on track 236° to cross RIDDG at 9000, thence. . .

. . . on filed transition. Maintain ATC assigned altitude. Expect clearance to filed altitude five minutes after departure.

MISSOULA TRANSITION (RIDDG1.MSO)

MULLAN PASS TRANSITION (RIDDG1.MLP)

SKOTT TRANSITION (RIDDG1.SKOTT)

RIDDG ONE DEPARTURE (RNAV)

(RIDDG1.RIDDG) 05OCT23

KALISPELL, MONTANA
GLACIER PARK INTL (GPI)

