

LOC I-GVQ 108.9	APP CRS 282°	Rwy Idg TDZE Apt Elev	5499 911 914
---------------------------	------------------------	-----------------------------	---

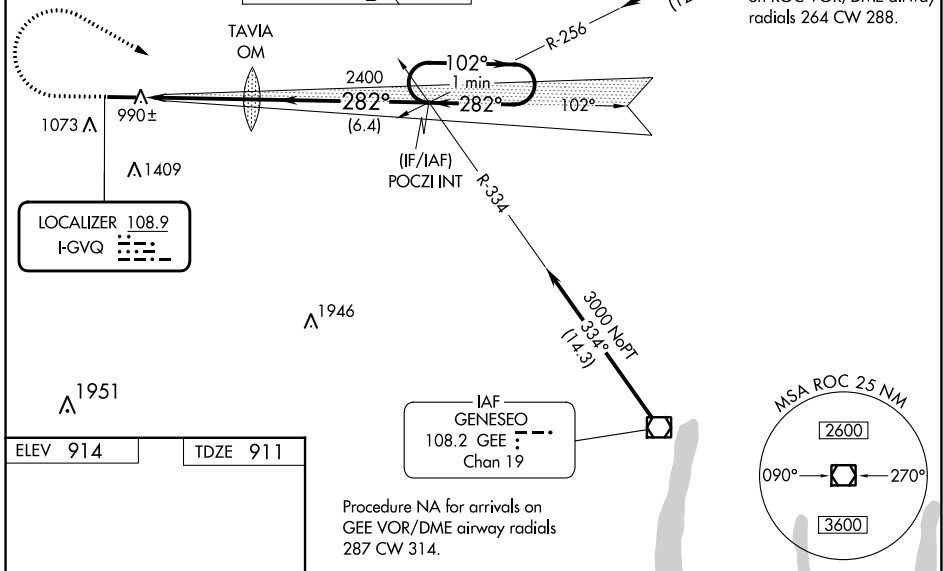
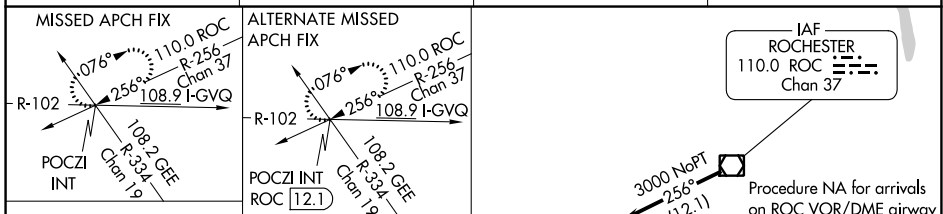
ILS or LOC RWY 28

GENESEE COUNTY (GVQ)

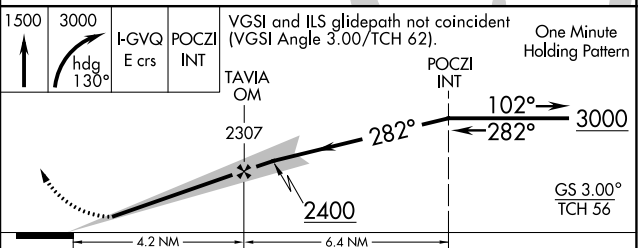
⚠ When local altimeter setting not received, use Rochester altimeter setting: increase DA to 1213 feet; increase all MDA 120 feet and visibility S-LOC 28 Cats C and D ¼ SM and Circling Cats C and D ½ SM. Autopilot coupled approach NA below 1433.

MALS
AS
MISSED APPROACH: Climb to 1500 then climbing right turn to 3000 via heading 130° and I-GVQ east course to POCZI INT and hold.

AWOS-3PT 127.525	ROCHESTER APP CON 123.7 322.3	CLNC DEL 121.8	UNICOM 122.7 (CTAF) 0
----------------------------	---	--------------------------	--



ELEV 914	TDZE 911
REIL Rwy 10 0	
HIRL Rwy 10-28 0	
FAF to MAP 4.2 NM	
Knots	60 90 120 150 180
Min:Sec	4:12 2:48 2:06 1:41 1:24



CATEGORY	A	B	C	D
S-ILS 28	1111-½ 200 (200-½)			
S-LOC 28	1260-½ 349 (400-½)			1260-¾ 349 (400-¾)
CIRCLING	1380-1	466 (500-1)	1720-2¼ 806 (900-2¼)	1720-2½ 806 (900-2½)

NE-2, 22 FEB 2024 to 21 MAR 2024

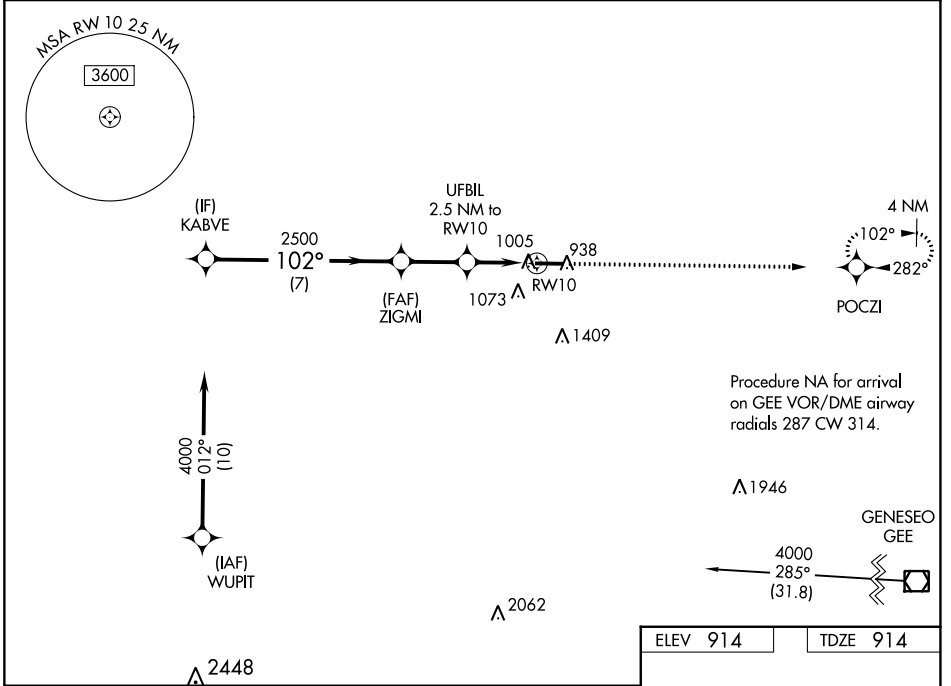
NE-2, 22 FEB 2024 to 21 MAR 2024

WAAS CH 82421 W10A	APP CRS 102°	Rwy Idg TDZE 914 Apt Elev 914	5499 914 914
--	------------------------	---	---

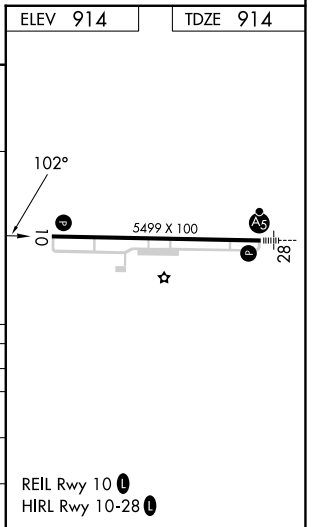
RNAV (GPS) RWY 10

GENESEE COUNTY (GVQ)

RNP APCH - GPS.			MISSED APPROACH: Climb to 3000 direct POCZI and hold.
<p>▼ For uncompensated Baro-VNAV systems, LNAV/VNAV NA ▲ below -16°C or above 54°C.</p>			
AWOS-3PT 127.525	ROCHESTER APP CON 123.7 322.3	CLNC DEL 121.8	UNICOM 122.7 (CTAF) 0



KABVE	GP 3.00° TCH 40	4000	102°	ZIGMI 2500	UFBIL 2.5 NM to RWY 10	1740	1 NM to RWY 10	RWY 10	3000	POCZI		
									7 NM	2.4 NM	1.5 NM	1 NM
									7 NM	2.4 NM	1.5 NM	1 NM
									7 NM	2.4 NM	1.5 NM	1 NM
									7 NM	2.4 NM	1.5 NM	1 NM
CATEGORY	A	B	C	D								
LPV DA		1114-3/4	200 (200-3/4)									
LNAV/VNAV DA		1168-3/4	254 (300-3/4)									
LNAV MDA		1260-1	346 (400-1)									
CIRCLING	1380-1	466 (500-1)	1720-2 1/4 806 (900-2 1/4)	1720-2 1/2 806 (900-2 1/2)								



NE-2, 22 FEB 2024 to 21 MAR 2024

NE-2, 22 FEB 2024 to 21 MAR 2024

WAAS CH 86311 W28A	APP CRS 282°	Rwy ldg TDZE 911 Apt Elev 914	5499
--	------------------------	---	-------------

RNAV (GPS) RWY 28

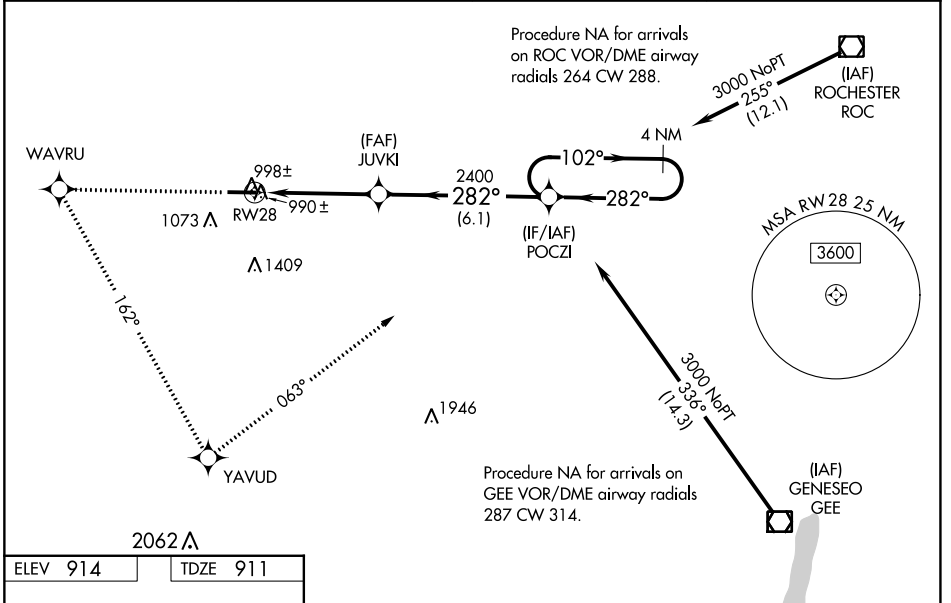
GENESEE COUNTY (GVQ)

⚠ For uncompensated Baro-VNAV systems, LNAV/VNAV NA below -16°C (4°F) or above 46°C (114°F). DME/DME RNP-0.3 NA. When local altimeter setting not received, use Rochester altimeter setting: increase LPV DA to 1263 feet and visibility ¼ SM all Cats; increase LNAV/VNAV DA to 1466 feet and visibility ½ SM all Cats; increase all MDA 120 feet and visibility LNAV Cat C ¼ SM and Circling Cats C and D ½ SM. Baro-VNAV and VDP NA when using Rochester altimeter setting. For inop MALSR increase LNAV Cat D visibility to 1¼ mile. For inop MALSR, when using Rochester altimeter setting increase LPV visibility all Cats to 1¼ mile.



MISSED APPROACH: Climb to 3300 direct WAVRU and left turn via 162° track to YAVUD and left turn via 063° track to POCZI and hold.

AWOS-3PT 127.525	ROCHESTER APP CON 123.7 322.3	CLNC DEL 121.8	UNICOM 122.7 (CTAF) 1
----------------------------	---	--------------------------	--



NE-2, 22 FEB 2024 to 21 MAR 2024

NE-2, 22 FEB 2024 to 21 MAR 2024

3300	↑	WAVRU	↖ tr 162°	YAVUD	↖ tr 063°	POCZI	4 NM Holding Pattern
* LNAV only.							
* 0.9 NM to RW28		RW28	JUVKI	↘ 282°	↖ 282°	3000	GP 3.00° TCH 56
0.9		3.6 NM		6.1 NM			
CATEGORY	A	B	C	D			
LPV DA	1161-½ 250 (300-½)						
LNAV/VNAV DA	1364-1 453 (500-1)						
LNAV MDA	1260-½ 349 (400-½)			1260-1 349 (400-1)			
CIRCLING	1380-1 466 (500-1)		1720-2¼ 806 (900-2¼)		1720-2½ 806 (900-2½)		

VOR/DME GEE 108.2 Chan 19	APP CRS 311°	Rwy Idg TDZE Apt Elev	N/A N/A 914
---	------------------------	-----------------------------	--

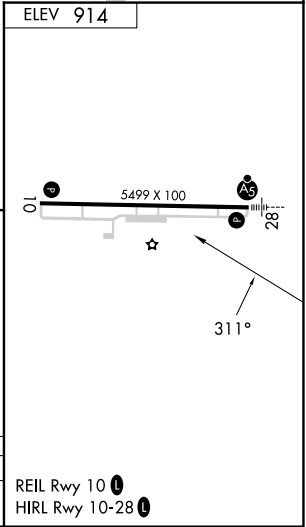
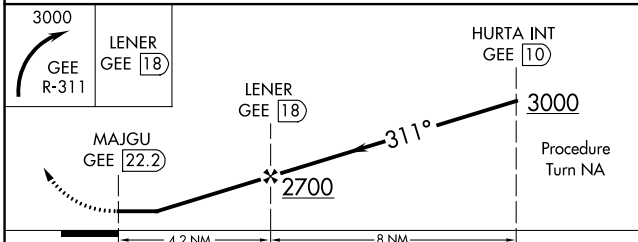
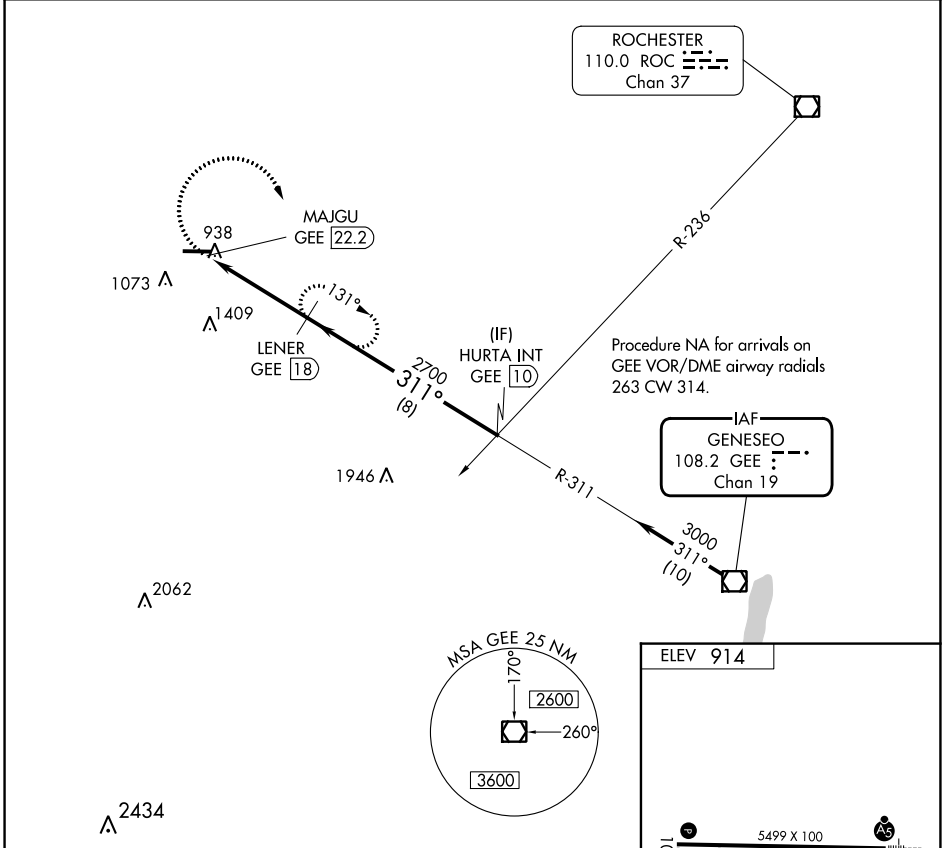
VOR/DME-A

GENESEE COUNTY (GVQ)

⚠ When local altimeter setting not received, use Rochester altimeter setting and increase all MDA 120 feet; increase visibility Cat A ¼ SM and Cat C and D ½ SM.

⚠ MISSED APPROACH: Climbing right turn to 3000 via GEE VOR/DME R-311 to LENER/18 DME and hold, continue to climb-in-hold to 3000.

AWOS-3PT 127.525	ROCHESTER APP CON 123.7 322.3	CLNC DEL 121.8	UNICOM 122.7 (CTAF) 0
----------------------------	---	--------------------------	--



CATEGORY	A	B	C	D
CIRCLING	1620-1 706 (800-1)	1620-1¼ 706 (800-1¼)	1720-2¼ 806 (900-2¼)	1720-2½ 806 (900-2½)

NE-2, 22 FEB 2024 to 21 MAR 2024

NE-2, 22 FEB 2024 to 21 MAR 2024