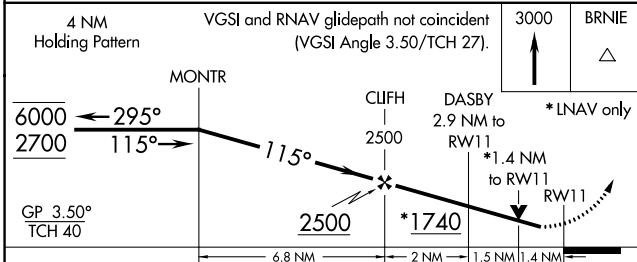
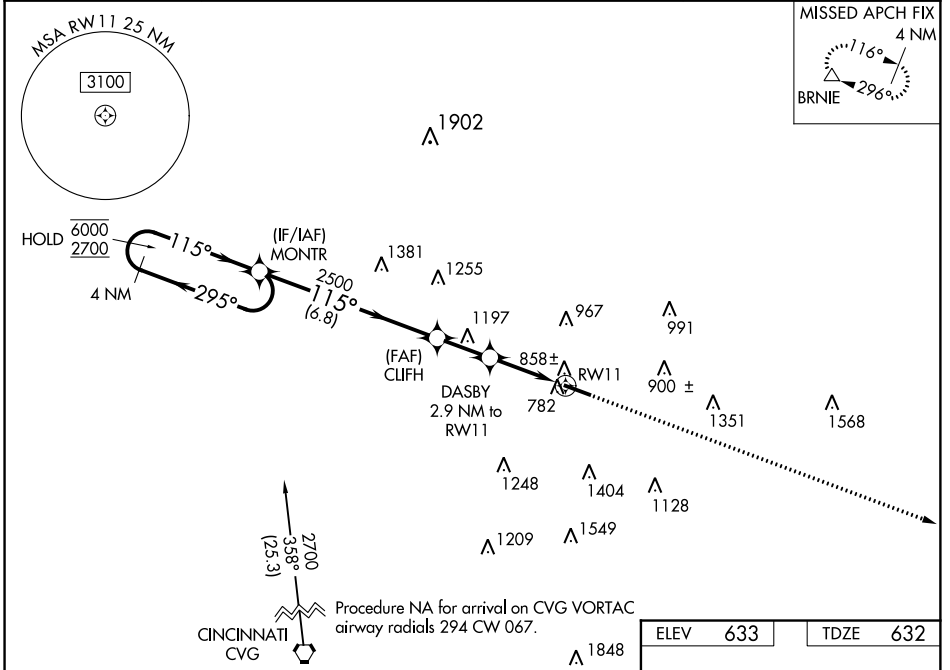


WAAS CH 56600 W11A	APP CRS 115°	Rwy Idg TDZE Apt Elev	5500 632 633
--	------------------------	-----------------------------	---

RNAV (GPS) RWY 11

BUTLER CO RGNL-HOGAN FIELD (HAO)

RNP APCH.			MISSED APPROACH: Climb to 3000 direct BRNIE and hold.
ASOS 121.425	CINCINNATI APP CON 121.0 363.15	CLNC DEL 126.25	UNICOM 123.05 (CTAF) 0



ELEV	633	TDZE	632
------	-----	------	-----

CATEGORY	A	B	C	D
LPV DA		1020-1 $\frac{1}{8}$	388 (400-1 $\frac{1}{8}$)	
RNAV/VNAV DA		1108-1 $\frac{3}{8}$	476 (500-1 $\frac{3}{8}$)	
RNAV MDA	1160-1	528 (600-1)	1160-1 $\frac{1}{2}$	528 (600-1 $\frac{1}{2}$)
CIRCLING	1160-1 527 (600-1)	1260-1 627 (700-1)	1300-1 $\frac{3}{4}$ 667 (700-1 $\frac{3}{4}$)	1760-3 1127 (1200-3)

MIRL Rwy 11-29 0
REIL Rwy 11 and 29 0

EC-2, 23 MAY 2019 to 20 JUN 2019

EC-2, 23 MAY 2019 to 20 JUN 2019

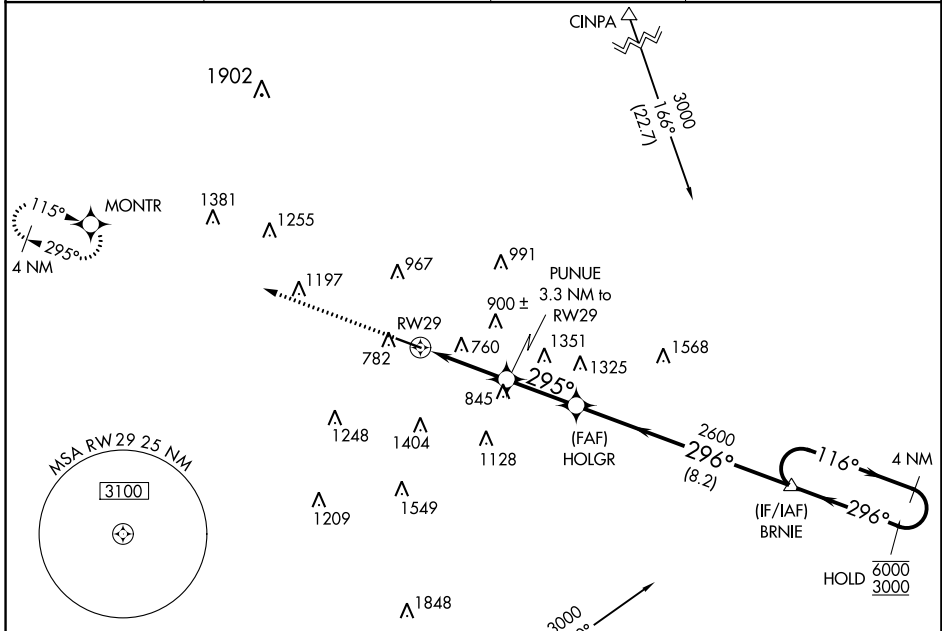
WAAS CH 61300 W29A	APP CRS 295°	Rwy Idg TDZE Apt Elev	5500 619 633
--	------------------------	-----------------------------	---

RNAV (GPS) RWY 29

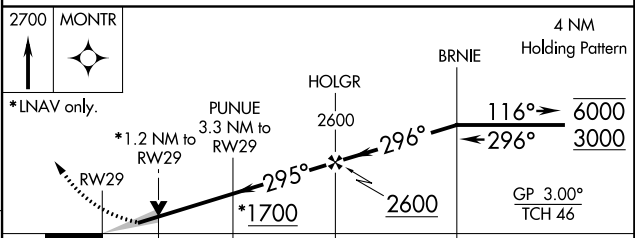
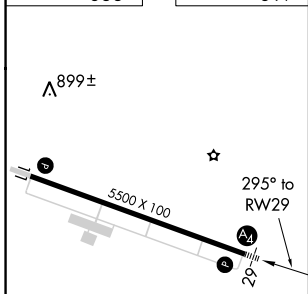
BUTLER CO RGNL-HOGAN FIELD (H.A.O)

RNP APCH.		MALS	MISSED APPROACH: Climb to 2700 direct MONTR and hold.
<p>T For uncompensated Baro-VNAV systems, LNAV/VNAV NA below -17°C or above 54°C. A For inop ALS, increase LNAV/VNAV visibility to 1 3/8 SM all Cats.</p>		A4	

ASOS 121.425	CINCINNATI APP CON 121.0 363.15	CLNC DEL 126.25	UNICOM 123.05 (CTAF) 0
------------------------	---	---------------------------	----------------------------------



ELEV 633	TDZE 619
-----------------	-----------------



CATEGORY	A	B	C	D
LPV DA		944-3/4	325 (400-3/4)	
LNAV/VNAV DA		1128-1 1/4	509 (500-1 1/4)	
LNAV MDA	1140-3/4	521 (600-3/4)	1140-1 1/4	521 (600-1 1/4)
CIRCLING	1160-1 527 (600-1)	1260-1 627 (700-1)	1300-1 3/4 667 (700-1 3/4)	1760-3 1127 (1200-3)

MIRL Rwy 11-29 **0**
REIL Rwy 11 and 29 **0**

EC-2, 23 MAY 2019 to 20 JUN 2019

EC-2, 23 MAY 2019 to 20 JUN 2019