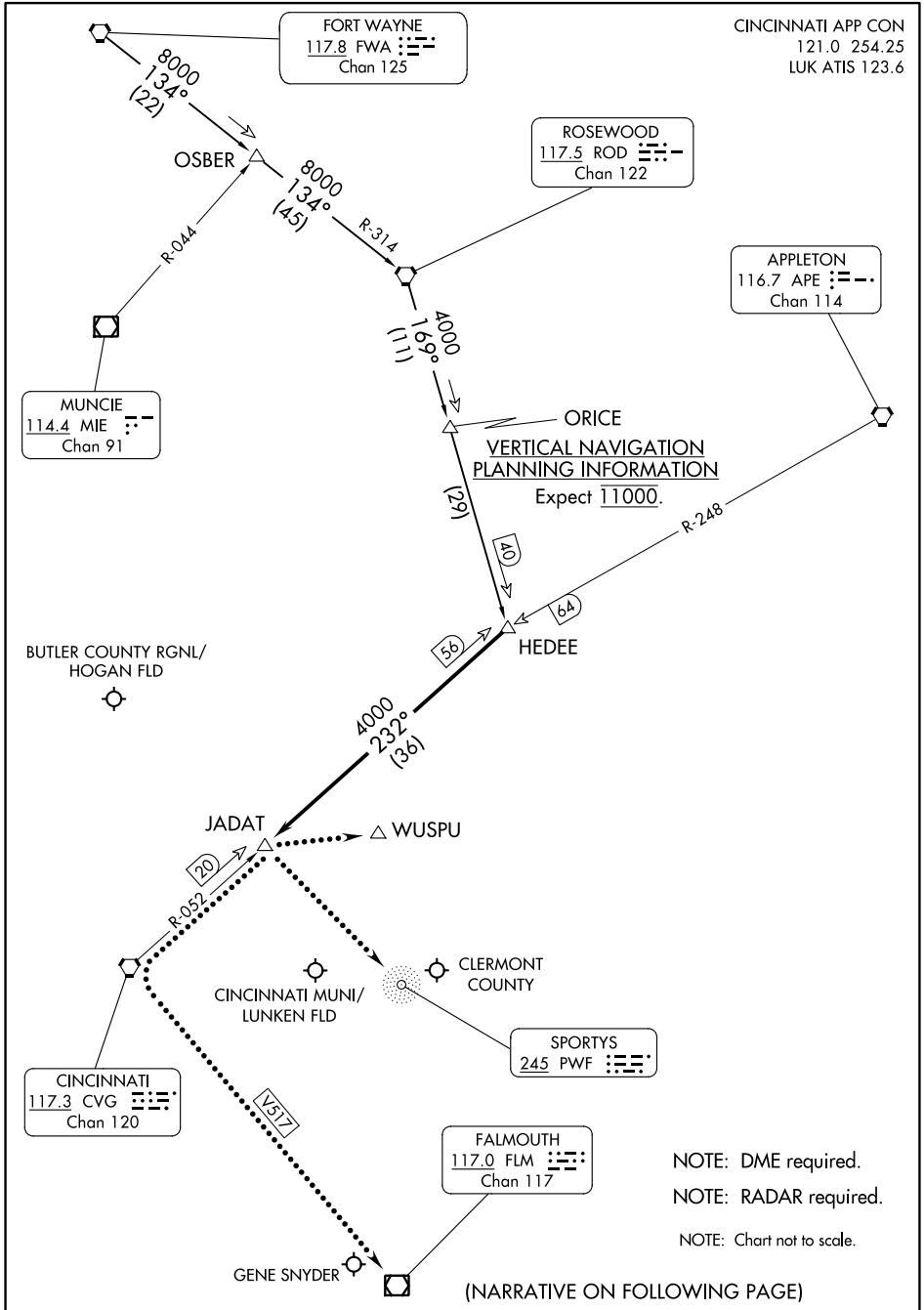


# HEDEE FOUR ARRIVAL

CINCINNATI, OHIO

CINCINNATI APP CON  
121.0 254.25  
LUK ATIS 123.6



EC-2, 22 FEB 2024 to 21 MAR 2024

EC-2, 22 FEB 2024 to 21 MAR 2024

# HEDEE FOUR ARRIVAL

CINCINNATI, OHIO

ARRIVAL ROUTE DESCRIPTION

FORT WAYNE TRANSITION (FWA.HEDEE4): From over FWA VORTAC via FWA R-134 to OSBER, then via FWA R-134 and ROD R-314 to ROD VORTAC, then via ROD R-169 to HEDEE. Thence. . . .

ROSEWOOD TRANSITION (ROD.HEDEE4): From over ROD VORTAC via ROD R-169 to HEDEE. Thence. . . .

. . . .From over HEDEE on CVG R-052 (MEA 4000) to JADAT, expect radar vectors to final approach course at JADAT.

LOST COMMUNICATION PROCEDURE

CINCINNATI MUNI/LUNKEN FLD - At JADAT, turn right to intercept CVG VORTAC R-059 to WUSPU and hold, maintain 4000.

CLERMONT COUNTY - At JADAT, proceed to SPORTYS (PWF) NDB, maintain 4000 until SPORTYS (PWF) NDB.

GENE SNYDER - At JADAT, proceed to CVG VORTAC then on V517 to FLM VOR/DME, maintain 4000 until FLM VOR/DME.

EC-2, 22 FEB 2024 to 21 MAR 2024

EC-2, 22 FEB 2024 to 21 MAR 2024

CINCINNATI APP CON  
123.875 254.25  
CVG D-ATIS ARR  
134.375  
LUK ATIS  
123.6

CINCINNATI, OHIO

(TIGRR, CINC9) 05DEC19

CINCINNATI, OHIO

ROSEWOOD  
117.5 ROD  
Chan 122

APPLETON  
116.7 APE  
Chan 114

CHARZ  
VERTICAL PLANNING  
INFORMATION  
All aircraft landing LUK expect  
4000 or 6000.



BUTLER COUNTY  
RGNL/HOGAN FLD

CINCINNATI  
117.3 CVG  
Chan 120

CINCINNATI MUNI/  
LUNKEN FLD

CINCINNATI/NORTHERN  
KENTUCKY INTL

FALMOUTH  
117.0 FLM  
Chan 117

SPORTYS  
245 PWF

TIGRR

NOTE: RADAR required.  
NOTE: DME required.  
NOTE: APE TRANSITION - Only for use  
by overseas flights, or, aircraft from the  
Cleveland/Akron-Canton/Pittsburgh  
terminal areas with filed altitudes FL220.

NOTE: Chart not to scale.

APPLETON TRANSITION (APE.CINC9): From over APE VORTAC on  
APE R-248 to JARSO, then on CVG R-051 to TIGRR. Thence...  
...from over TIGRR on CVG R-051 to CVG VORTAC.  
Expect vectors to final approach course after TIGRR.

LOST COMMUNICATIONS:  
For LUK: At CVG VORTAC, proceed on V5 to WUSPU and  
hold, maintain 4000.  
For I69: At CVG VORTAC, proceed to SPORTYS (PWF)  
maintain 4000 until SPORTYS (PWF).  
For K62: At CVG VORTAC, proceed on V517 to FLM VOR/DME,  
maintain 3000 until FLM VOR/DME.

(TIGRR, CINC9) 24025

AL-655 (FAA)

CINCINNATI, OHIO

# HARDU FIVE ARRIVAL

CINCINNATI APP CON  
 119.7 363.15 (090°-269°)  
 123.875 363.15 (270°-089°)  
 CVG D-ATIS ARR  
 134.375  
 LUK ATIS  
 123.6

BUTLER COUNTY  
 RGNL/HOGAN FLD

WUSPU

SPORTYS  
 245 PWF

CINCINNATI/  
 NORTHERN  
 KENTUCKY INTL

CINCINNATI MUNI/  
 LUNKEN FLD

CLERMONT COUNTY

CINCINNATI  
 117.3 CVG  
 Chan 120

ZETLA

GENE SNYDER

NOTE: RADAR required.  
 NOTE: DME required.

FALMOUTH  
 117.0 FLM  
 Chan 117

JAKIE

LEXINGTON  
 112.6 HYK  
 Chan 73

HARDU

TAYOS

CHEDA

PACKO

ARTUR

VOLUNTEER  
 116.4 VXV  
 Chan 111

HOLSTON MOUNTAIN  
 114.6 HMV  
 Chan 93

NOTE: Chart not to scale.

(CONTINUED ON FOLLOWING PAGE)

# HARDU FIVE ARRIVAL

SE-1, 22 FEB 2024 to 21 MAR 2024

SE-1, 22 FEB 2024 to 21 MAR 2024

ARRIVAL ROUTE DESCRIPTION

HOLSTON MOUNTAIN TRANSITION (HMV.HARDU5): From over HMV VORTAC on HMV R-311 to CHEDA, then on VXV R-011 to TAYOS, then on FLM R-154 to HARDU. Thence . . .

VOLUNTEER TRANSITION (VXV.HARDU5): From over VXV VORTAC on VXV R-011 to TAYOS, then on FLM R-154 to HARDU. Thence . . .

. . . from over HARDU on FLM VOR/DME R-154 to FLM VOR/DME, then FLM R-314 to ZETLA. Expect vectors to final approach course after JAKIE.

LOST COMMUNICATIONS

For LUK: At ZETLA, proceed to CVG VORTAC then on V5 to WUSPU and hold, maintain 4000.

For HAO: At ZETLA, proceed to CVG VORTAC. Maintain 3000 until CVG VORTAC.

For I69: At ZETLA, proceed to CVG VORTAC then to SPORTYS (PWF). Maintain 4000 until SPORTYS (PWF).

For K62: At ZETLA, proceed to CVG VORTAC then on V517 to FLM VOR/DME. Maintain 3000 until FLM VOR/DME.

SE-1, 22 FEB 2024 to 21 MAR 2024

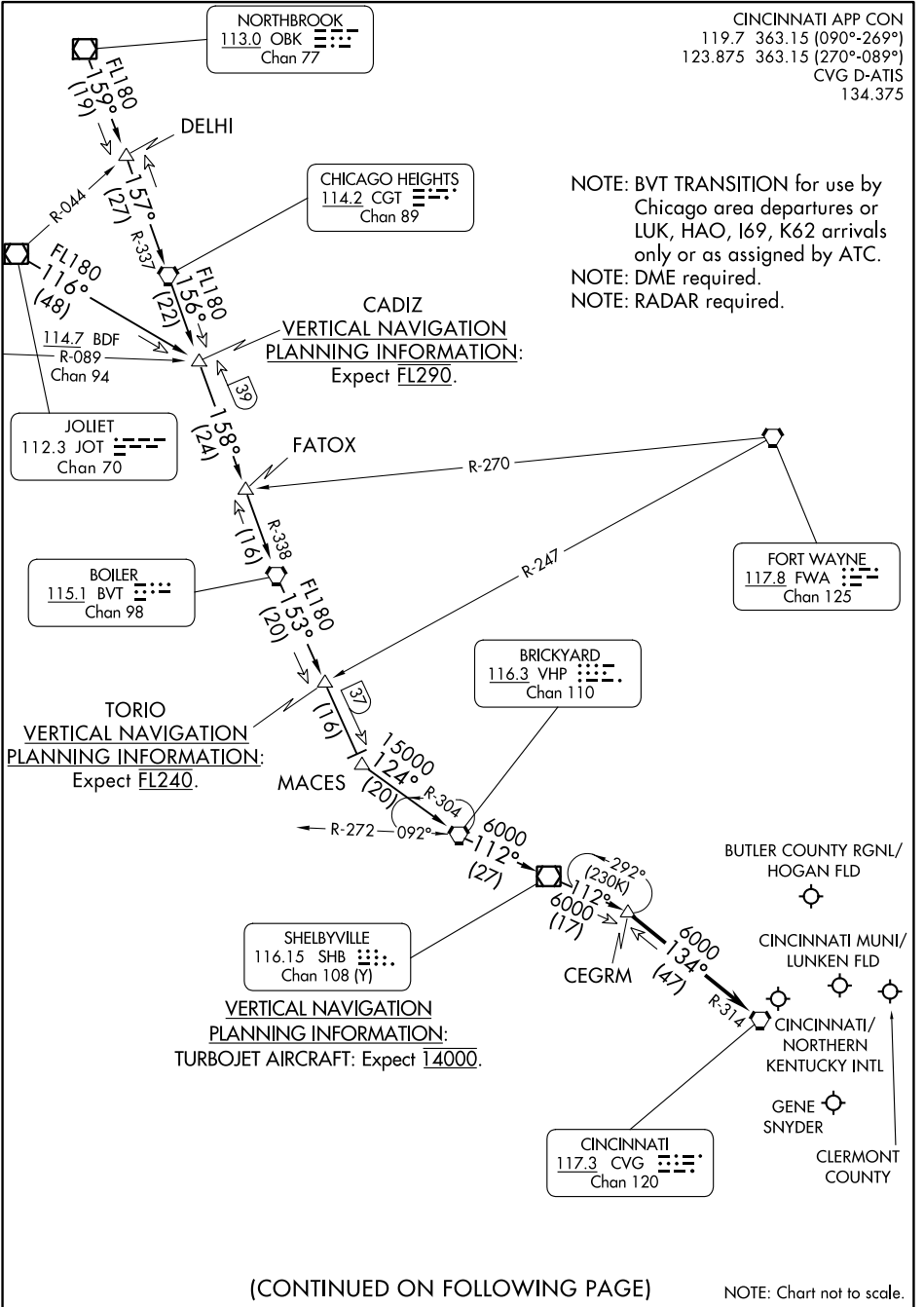
SE-1, 22 FEB 2024 to 21 MAR 2024

# SHELBYVILLE SIX ARRIVAL

AL-655 (FAA)

COVINGTON, KENTUCKY

CINCINNATI APP CON  
 119.7 363.15 (090°-269°)  
 123.875 363.15 (270°-089°)  
 CVG D-ATIS  
 134.375



SE-1, 22 FEB 2024 to 21 MAR 2024

SE-1, 22 FEB 2024 to 21 MAR 2024

# SHELBYVILLE SIX ARRIVAL

COVINGTON, KENTUCKY

ARRIVAL ROUTE DESCRIPTION

BOILER TRANSITION (BVT.SHB6): From over BVT VORTAC on BVT R-153 to MACES, then on VHP R-304 to VHP VORTAC, then on VHP R-112 to SHB VOR/DME, then on SHB R-112 to CEGRM, thence....

JOLIET TRANSITION (JOT.SHB6): From over JOT VOR/DME on JOT R-116 to CADIZ, then on BVT R-338 to BVT VORTAC, then on BVT R-153 to MACES, then on VHP R-304 to VHP VORTAC, then on VHP R-112 to SHB VOR/DME, then on SHB R-112 to CEGRM, thence....

NORTHBROOK TRANSITION (OBK.SHB6): From over OBK VOR/DME on OBK R-159 to DELHI, then on CGT R-337 to CGT VORTAC, then on CGT R-156 to CADIZ, then on BVT R-338 to BVT VORTAC, then on BVT R-153 to MACES, then on VHP R-304 to VHP VORTAC, then on VHP R-112 to SHB VOR/DME, then on SHB R-112 to CEGRM, thence....

....from over CEGRM on CVG R-314 to CVG VORTAC. Expect RADAR vectors to final approach course after CEGRM.

SE-1, 22 FEB 2024 to 21 MAR 2024

SE-1, 22 FEB 2024 to 21 MAR 2024