

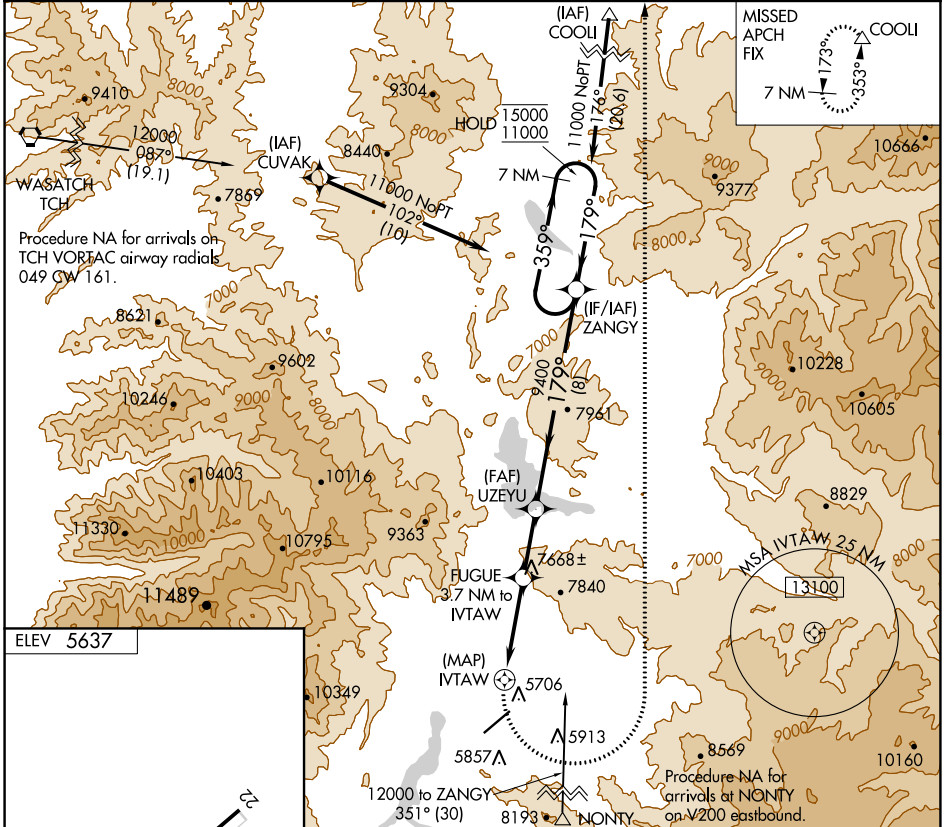
APP CRS 179°	Rwy Idg TDZE Apt Elev N/A N/A 5637
------------------------	--

RNAV (GPS)-A

HEBER VALLEY (HCR)

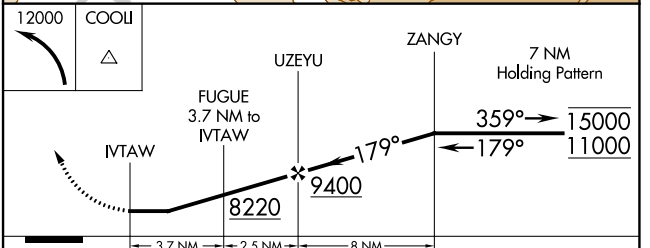
RNP APCH. Circling NA south of Rwy 4-22. Circling Rwy 4 NA at night. -17°C	MISSED APPROACH: (Do not exceed 210K until turn completion) Climbing left turn to 12000 direct COOLI and hold.
---	---

AWOS-3PT 124.825	SALT LAKE CITY CENTER 119.95 377.15	UNICOM 122.8 (CTAF)
----------------------------	---	-------------------------------



ELEV 5637

MIRL Rwy 4-22



CATEGORY	A	B	C	D
CIRCLING	8020-1½	2383 (2400-1½)	8020-3 2383 (2400-3)	NA

SW-4, 19 MAY 2022 to 16 JUN 2022

SW-4, 19 MAY 2022 to 16 JUN 2022