

WAAS CH <b>73002</b> <b>W18A</b>	APP CRS <b>183°</b>	Rwy Idg TDZE Apt Elev	<b>4701</b> <b>2309</b> <b>2313</b>
--	------------------------	-----------------------------	---

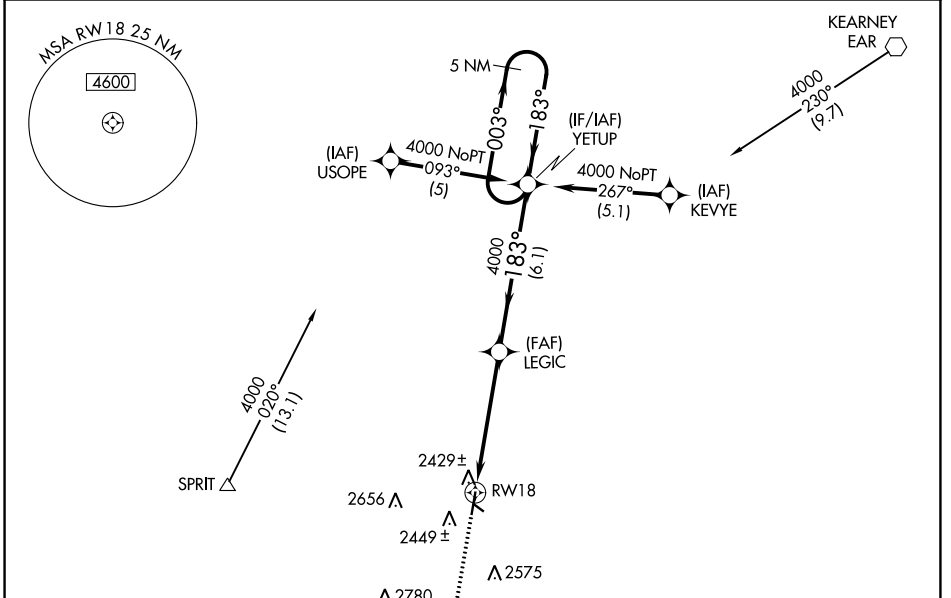
# RNAV (GPS) RWY 18

BREWSTER FLD (HDE)

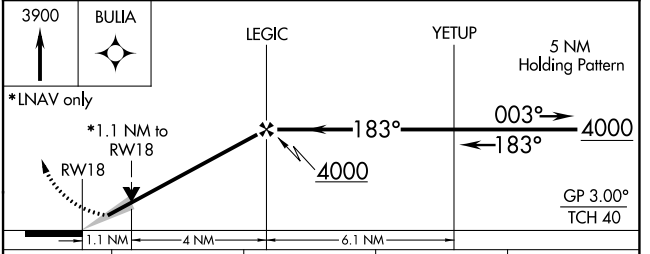
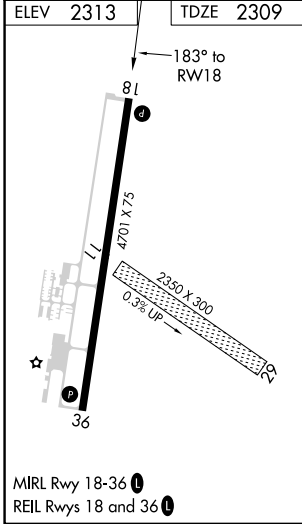
**⚠** When local altimeter setting not received, use Kearney altimeter setting and increase DA to 2639 feet and all MDAs 80 feet, and increase Circling Cats C/D visibility ¼ SM. DME/DME RNP-0.3 NA. VDP NA when using Kearney altimeter setting.

MISSED APPROACH: Climb to 3900 direct BULIA and hold.

AWOS-3 <b>121.325</b>	DENVER CENTER <b>132.7 226.675</b>	UNICOM <b>122.8 (CTAF) 0</b>
--------------------------	---------------------------------------	---------------------------------



SPRIT  $\triangle$  4000 020° (13.1)



CATEGORY	A	B	C	D
LPV DA	2559-1 250 (300-1)			
LNAV MDA	2680-1 371 (400-1)			2680-1¼ 371 (400-1¼)
CIRCLING	2840-1 527 (600-1)		3020-2 707 (800-2)	3020-2¼ 707 (800-2¼)

NC-2, 22 FEB 2024 to 21 MAR 2024

NC-2, 22 FEB 2024 to 21 MAR 2024

WAAS CH <b>69301</b> <b>W36A</b>	APP CRS <b>003°</b>	Rwy Idg <b>4701</b> TDZE <b>2309</b> Apt Elev <b>2313</b>
--	------------------------	---

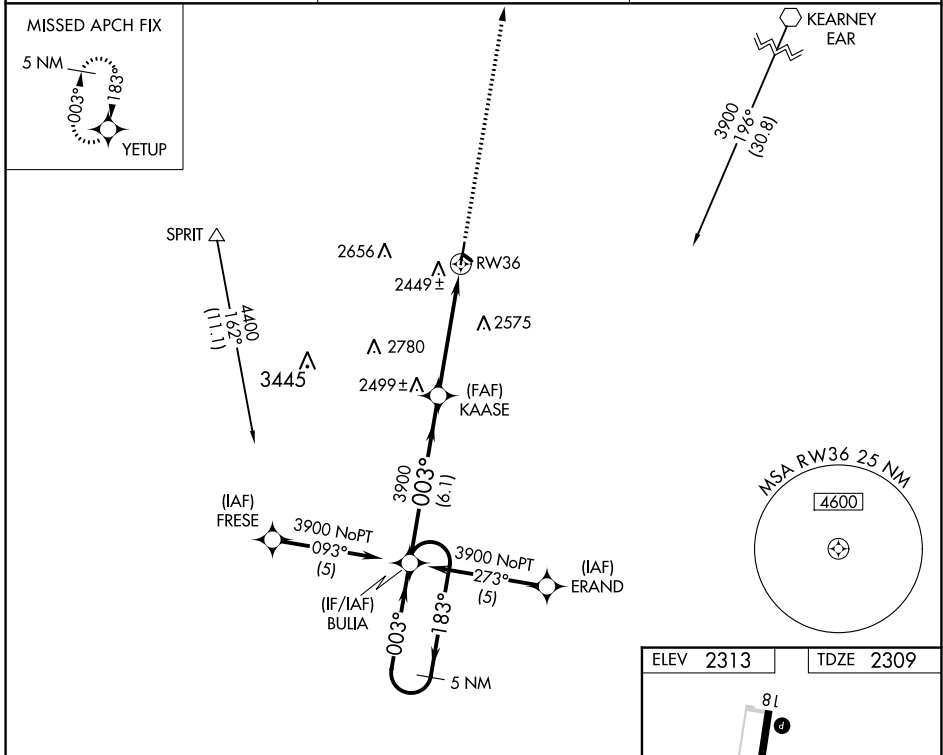
# RNAV (GPS) RWY 36

BREWSTER FLD (HDE)

**▽** DME/DME RNP-0.3 NA. When local altimeter setting not received, use Kearney altimeter setting and increase DA to 2639 feet and all MDAs 80 feet, and increase Circling Cats C/D visibility ¼ SM. VDP NA when using Kearney altimeter setting.

**▲** MISSED APPROACH: Climb to 4000 direct YETUP and hold.

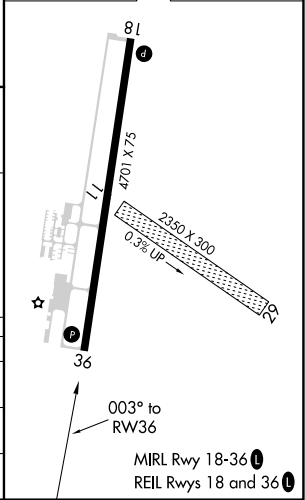
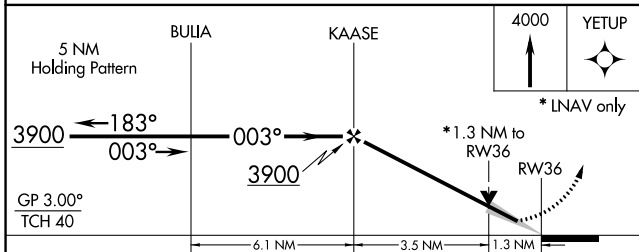
AWOS-3 <b>121.325</b>	DENVER CENTER <b>132.7 226.675</b>	UNICOM <b>122.8 (CTAF)</b>
--------------------------	---------------------------------------	-------------------------------



NC-2, 22 FEB 2024 to 21 MAR 2024

NC-2, 22 FEB 2024 to 21 MAR 2024

ELEV 2313	TDZE 2309
-----------	-----------



CATEGORY	A	B	C	D
LPV DA	2559-1 250 (300-1)			
LNAV MDA	2760-1 451 (500-1)	2760-1½ 451 (500-1½)	2760-1½ 451 (500-1½)	2760-1½ 451 (500-1½)
CIRCLING	2840-1 527 (600-1)	3020-2 707 (800-2)	3020-2½ 707 (800-2½)	3020-2½ 707 (800-2½)

VOR EAR <b>111.2</b>	APP CRS <b>217°</b>	Rwy Idg TDZE Apt Elev	<b>N/A</b> <b>N/A</b> <b>2313</b>
-------------------------	------------------------	-----------------------------	---

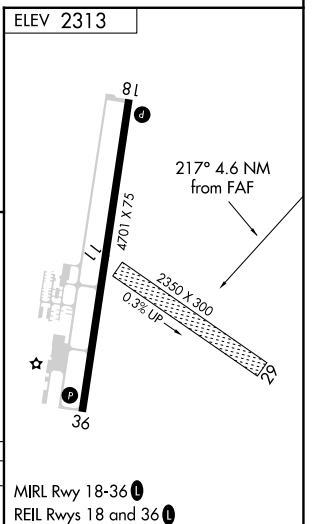
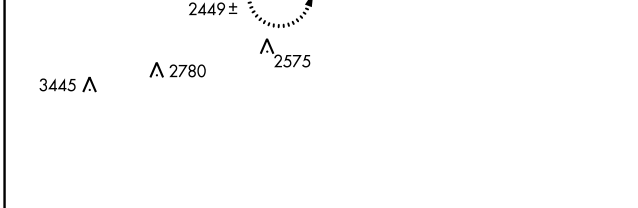
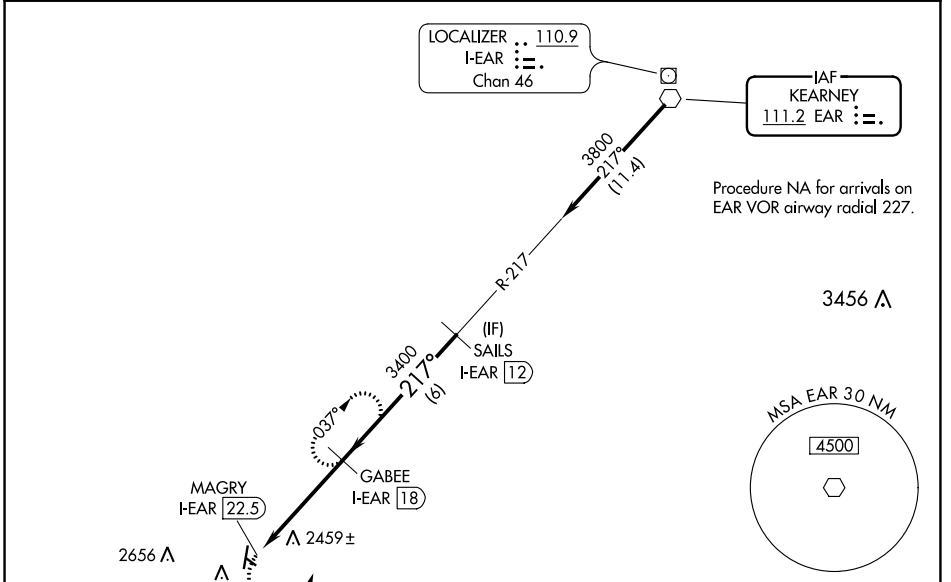
**VOR-A**  
BREWSTER FLD (HDE)

DME required.

**▽** DME from I-EAR localizer.  
**▲** Simultaneous reception of EAR VOR and I-EAR DME required.  
 When local altimeter setting not received, use Kearney altimeter setting and increase all MDA 80 feet and increase all visibilities ¼ SM.

MISSED APPROACH: Climbing left turn to 3900 on EAR VOR R-217 to GABEE/I-EAR 18 DME and hold.

AWOS-3 <b>121.325</b>	DENVER CENTER <b>132.7 226.675</b>	UNICOM <b>122.8 (CTAF) 0</b>
--------------------------	---------------------------------------	---------------------------------



CATEGORY	A	B	C	D
<b>C</b> CIRCLING	3100-1 787 (800-1)	3100-1¼ 787 (800-1¼)	3100-2¼ 787 (800-2¼)	3100-2½ 787 (800-2½)

MIRL Rwy 18-36 0	REIL Rwys 18 and 36 0
------------------	-----------------------

NC-2, 22 FEB 2024 to 21 MAR 2024

NC-2, 22 FEB 2024 to 21 MAR 2024