

WAAS CH <b>90140</b> <b>W12A</b>	APP CRS <b>128°</b>	Rwy Idg TDZE Apt Elev	<b>4652</b> <b>2706</b> <b>2706</b>
--	------------------------	-----------------------------	---

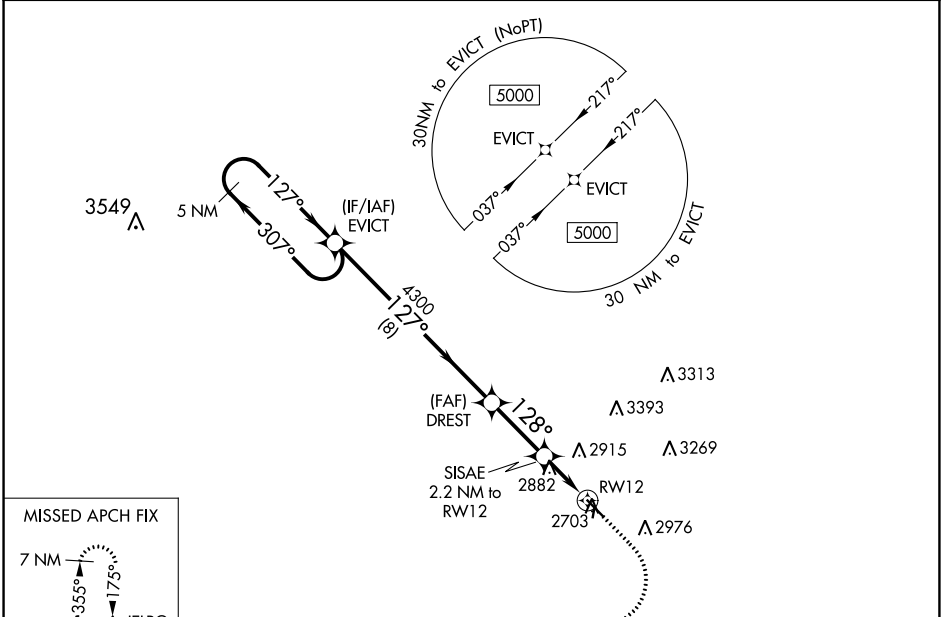
# RNAV (GPS) RWY 12

HETTINGER/JB LINDQUIST RGNL (HEI)

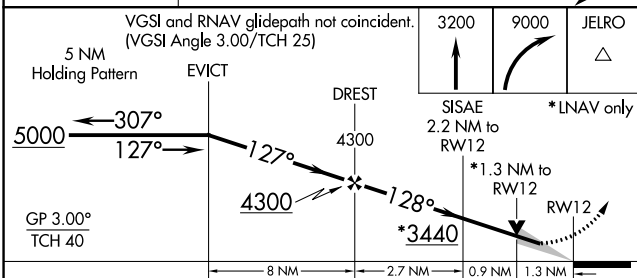
**⚠** For uncompensated Baro-VNAV systems, LNAV/VNAV NA below -20°C (-4°F) or above 54°C (130°F). DME/DME RNP-0.3 NA. Circling NA northeast of Rwy 12-30. Circling NA to Rwys 17 and 35.

**MISSED APPROACH:** Climb to 3200, then climbing right turn to 9000 direct JELRO and hold, continue climb-in-hold to 9000.

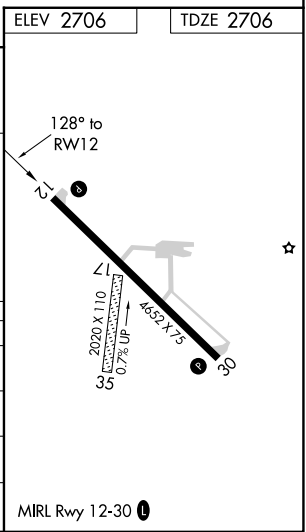
ASOS <b>119.925</b>	MINNEAPOLIS CENTER <b>124.25 236.825</b>	UNICOM <b>122.8 (CTAF)</b>
------------------------	---	-------------------------------



ELEV 2706	TDZE 2706
-----------	-----------



CATEGORY	A	B	C	D
LPV DA	2956-1		250 (300-1)	
LNAV/VNAV DA	3168-1½		462 (500-1½)	
LNAV MDA	3140-1	434 (500-1)	3140-1¼	434 (500-1¼)
<b>C</b> CIRCLING	3180-1 474 (500-1)	3240-1 534 (600-1)	3240-1½ 534 (600-1½)	3460-2½ 754 (800-2½)



NC-1, 22 FEB 2024 to 21 MAR 2024

NC-1, 22 FEB 2024 to 21 MAR 2024

WAAS CH <b>82738</b> <b>W30A</b>	APP CRS <b>308°</b>	Rwy Idg <b>4652</b> TDZE <b>2706</b> Apt Elev <b>2706</b>
--	------------------------	---

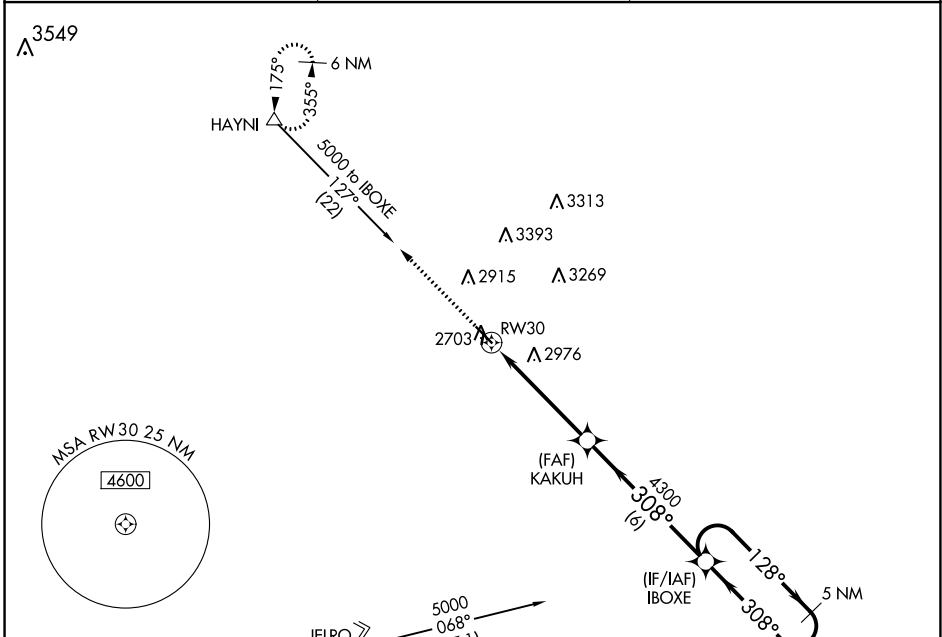
# RNAV (GPS) RWY 30

HETTINGER/JB LINDQUIST RGNL (HEI)

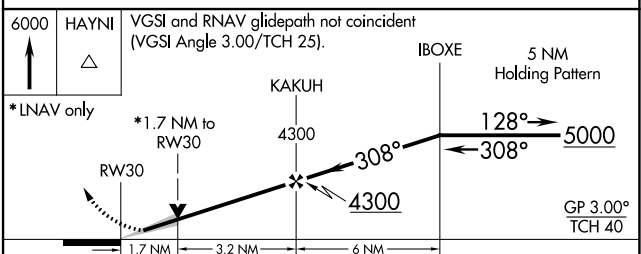
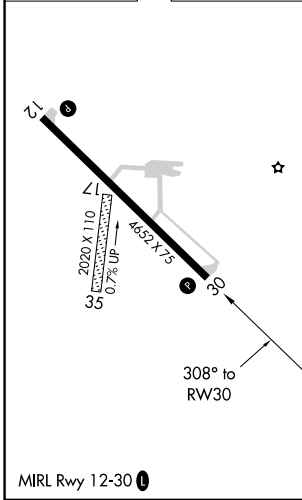
**⚠** For uncompensated Baro-VNAV systems, LNAV/VNAV NA below -20°C (-4°F) or above 54°C (130°F). DME/DME RNP-0.3 NA.  
**⚠** Circling NA northeast of Rwy 12-30. Circling NA to Rwys 17 and 35.

MISSED APPROACH: Climb to 6000 direct HAYNI and hold, continue climb-in-hold to 6000.

ASOS <b>119.925</b>	MINNEAPOLIS CENTER <b>124.25 236.825</b>	UNICOM <b>122.8 (CTAF)</b>
------------------------	---	-------------------------------



ELEV 2706	TDZE 2706
-----------	-----------



CATEGORY	A	B	C	D
LPV DA	2956-1		250 (300-1)	
LNAV/VNAV DA	3233-1 $\frac{7}{8}$		527 (600-1 $\frac{7}{8}$ )	
LNAV MDA	3260-1	554 (600-1)	3260-1 $\frac{5}{8}$	554 (600-1 $\frac{5}{8}$ )
<b>C</b> CIRCLING	3260-1	554 (600-1)	3260-1 $\frac{5}{8}$ 554 (600-1 $\frac{5}{8}$ )	3460-2 $\frac{1}{2}$ 754 (800-2 $\frac{1}{2}$ )

NC-1, 22 FEB 2024 to 21 MAR 2024

NC-1, 22 FEB 2024 to 21 MAR 2024