

LOC I-HFD 109.7	APP CRS 002°	Rwy Idg TDZE Apt Elev	4006 17 18
---------------------------	------------------------	-----------------------------	---------------------------------------

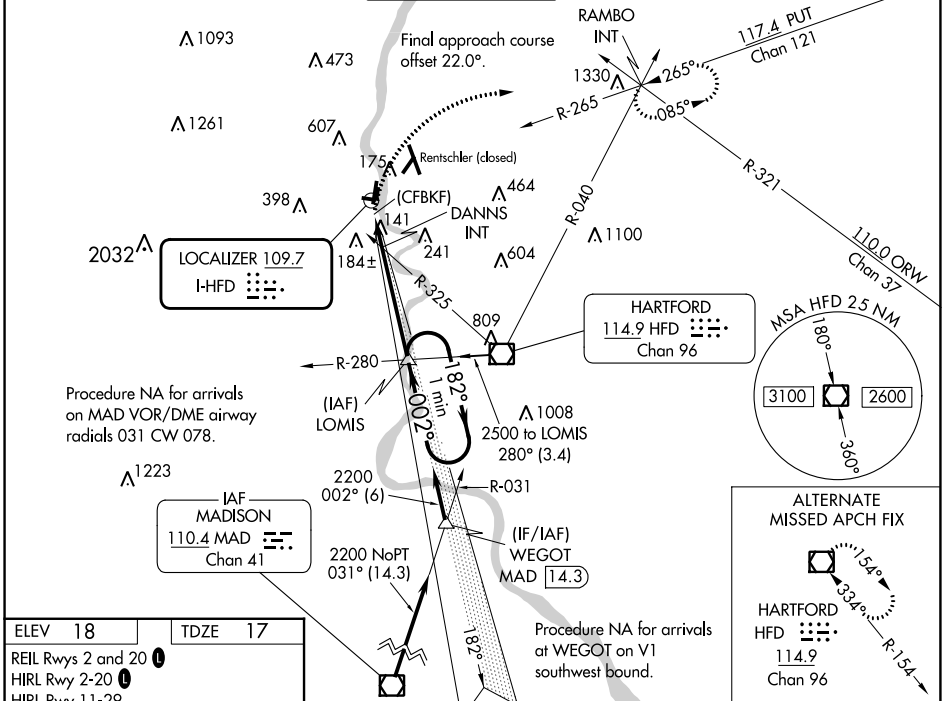
LDA RWY 2

HARTFORD-BRAINARD (HFD)

▼ Helicopter visibility reduction below 1 SM NA. Night landing: Rwy 11, 20, 29 NA. Night landing: Rwy 2 operational VGSI required, remain on or above VGSI glidepath until threshold.

▲ MISSED APPROACH: Climbing right turn to 2500 on heading 090° and PUT VOR/DME R-265 to RAMBO INT and hold.

ATIS 126.45	BRADLEY APP CON 127.8 269.325	BRAINARD TOWER * 119.6 (CTAF) 0 248.2	GND CON 121.6	CLNC DEL 121.6	UNICOM 122.95
-----------------------	---	--	-------------------------	--------------------------	-------------------------

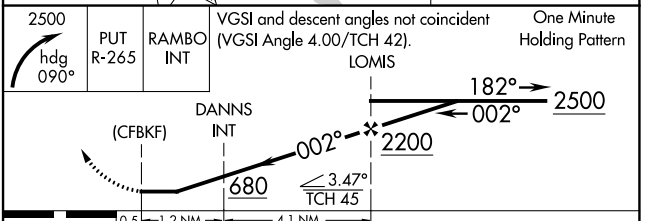


ELEV 18 TDZE 17

REIL Rws 2 and 20
HIRL Rwy 2-20
HIRL Rwy 11-29

FAF to MAP 5.3 NM

Knots	60	90	120	150	180
Min:Sec	5:18	3:32	2:39	2:07	1:46



CATEGORY	A	B	C	D
S-2	680-1	663 (700-1)	680-1 7/8	663 (700-1 7/8)
CIRCLING	680-1 662 (700-1)	900-1 1/4 882 (900-1 1/4)	920-2 3/4 902 (1000-2 3/4)	920-3 902 (1000-3)
DANNIS FIX MINIMUMS (DUAL VOR RECEIVERS REQUIRED)				
S-2	460-1	443 (500-1)	460-1 3/8	443 (500-1 3/8)
CIRCLING	580-1 562 (600-1)	900-1 1/4 882 (900-1 1/4)	920-2 3/4 902 (1000-2 3/4)	920-3 902 (1000-3)

NE-1, 22 FEB 2024 to 21 MAR 2024

NE-1, 22 FEB 2024 to 21 MAR 2024

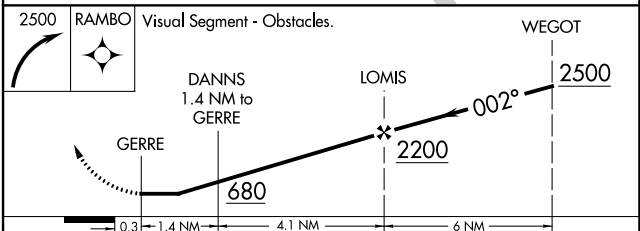
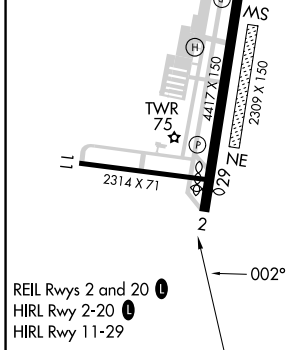
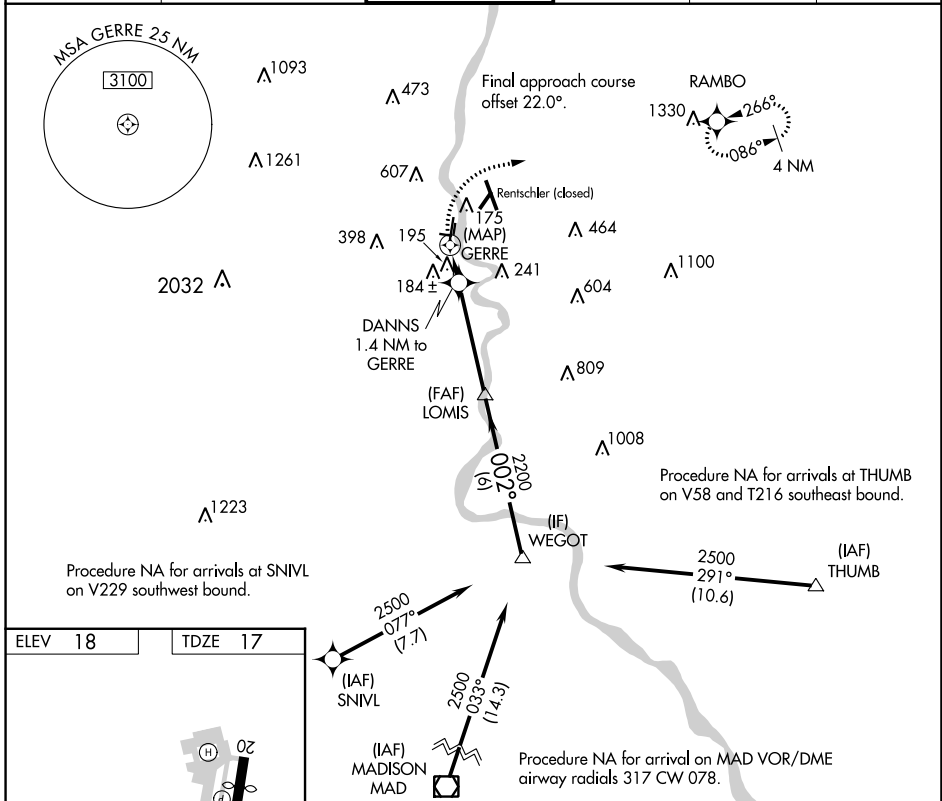
APP CRS	Rwy Idg	4006
002°	TDZE	17
	Apt Elev	18

RNAV (GPS) RWY 2

HARTFORD-BRAINARD (HF'D)

RNP APCH.	<p>▼ Circling NA at night. Rwy 2 helicopter visibility reduction below 1 SM NA. ▲ Straight-in Rwy 2 at night, operational VGSI required, remain on or above VGSI glidepath until threshold.</p>	MISSED APPROACH: Climbing right turn to 2500 direct RAMBO and hold.

ATIS 126.45	BRADLEY APP CON 127.8 269.325	BRAINARD TOWER * 119.6 (CTAF) 0 248.2	GND CON 121.6	CLNC DEL 121.6	UNICOM 122.95
-----------------------	---	--	-------------------------	--------------------------	-------------------------



CATEGORY	A	B	C	D
LNAV MDA	460-1	443 (500-1)	460-1 $\frac{3}{8}$	443 (500-1 $\frac{3}{8}$)
CIRCLING	580-1 562 (600-1)	900-1 $\frac{1}{4}$ 882 (900-1 $\frac{1}{4}$)	920-2 $\frac{3}{4}$ 902 (1000-2 $\frac{3}{4}$)	920-3 902 (1000-3)

NE-1, 22 FEB 2024 to 21 MAR 2024

NE-1, 22 FEB 2024 to 21 MAR 2024

23166

RIVER VISUAL RWY 2

AL-189 (FAA)

HARTFORD-BRAINARD (HFD)
HARTFORD, CONNECTICUT

ATIS
126.45
BRADLEY APP CON
127.8 269.325
BRAINARD TOWER ★
119.6 (CTAF) 248.2
GND CON
121.6
CLNC DEL
121.6

RADAR REQUIRED

RENTSCHLER
AIRPORT
(CLOSED)



CAUTION: Rentschler
Airport (closed) 1.5 NM
northeast of Hartford-Brainard

WETHERSFIELD
COVE

CONNECTICUT

HARTFORD-BRAINARD
AIRPORT

LOCALIZER 109.7

HFD

PUTNAM
BRIDGE

RIVER

NOISE
SENSITIVE
AREA

Weather minimums:
3000 foot ceiling
and 5 mile visibility

NOTE: This procedure will be utilized
for aircraft arriving from west of
Connecticut River and south of
the city of Hartford.

NOTE: Procedure NA when
tower closed.

Vertical Guidance
Navaid and Angle:
RWY 2 PAPI 4.00°

Maintain 2500 until
abeam LOMIS INT

LOMIS
N41°38.27'
W72°37.33'

R-280

810

HARTFORD
114.9 HFD
Chan 96

1	2	3	4	5	6	7	8
---	---	---	---	---	---	---	---

Enter upwind or base leg as directed by Brainard Tower.

RIVER VISUAL RWY 2

41°44'N-72°39'W

HARTFORD, CONNECTICUT
HARTFORD-BRAINARD (HFD)

Amdt 2 07MAR13

NE-1, 22 FEB 2024 to 21 MAR 2024

NE-1, 22 FEB 2024 to 21 MAR 2024

VOR/DME HFD 114.9 Chan 96	APP CRS 334°	Rwy Idg TDZE Apt Elev 18	N/A N/A 18
---	------------------------	---------------------------------------	-------------------------

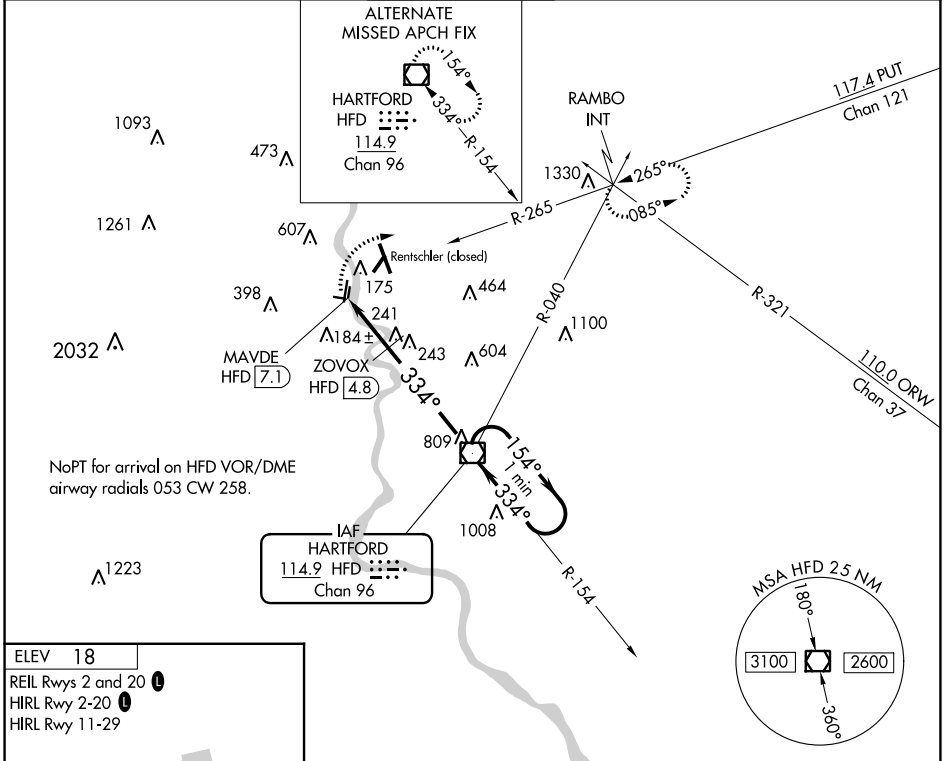
VOR-A

HARTFORD-BRAINARD (HF'D)

▼ Helicopter visibility reduction below 1 SM NA. When Rwy 2 VGSi inop, Circling to Rwy 2 NA at night. Circling to Rwy 11 and 29 NA at night. When Rwy 20 VGSi inop, Circling to Rwy 20 NA at night.

▲ MISSED APPROACH: Climbing right turn to 2500 on heading 100° and PUT VOR/DME R-265 to RAMBO INT and hold.

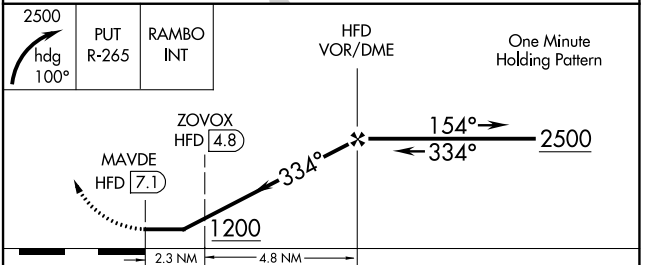
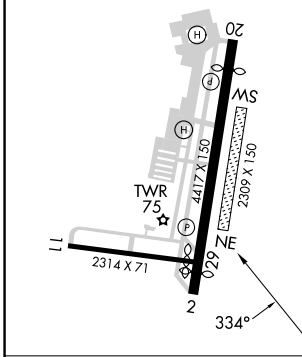
ATIS 126.45	BRADLEY APP CON 127.8 269.325	BRAINARD TOWER * 119.6 (CTAF) 0 248.2	GND CON 121.6	CLNC DEL 121.6	UNICOM 122.95
-----------------------	---	---	-------------------------	--------------------------	-------------------------



NE-1, 22 FEB 2024 to 21 MAR 2024

NE-1, 22 FEB 2024 to 21 MAR 2024

ELEV 18
REIL Rwys 2 and 20
HIRL Rwy 2-20
HIRL Rwy 11-29



CATEGORY	A	B	C	D
CIRCLING	1200-1¼ 1182 (1200-1¼)	1200-1½ 1182 (1200-1½)	1200-3 1182 (1200-3)	
ZOVOX FIX MINIMUMS (DME REQUIRED)				
CIRCLING	580-1 562 (600-1)	900-1¼ 882 (900-1¼)	920-2¾ 902 (1000-2¾)	920-3 902 (1000-3)

FAF to MAP 7.1 NM					
Knots	60	90	120	150	180
Min:Sec	7:06	4:44	3:33	2:50	2:22