

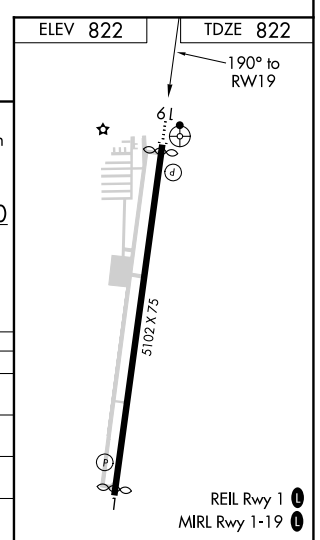
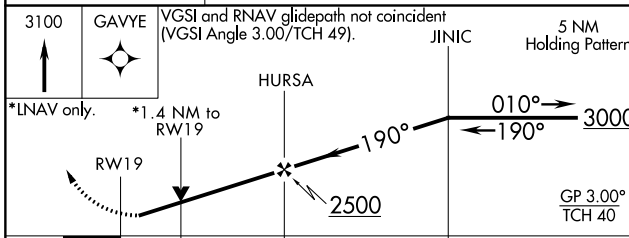
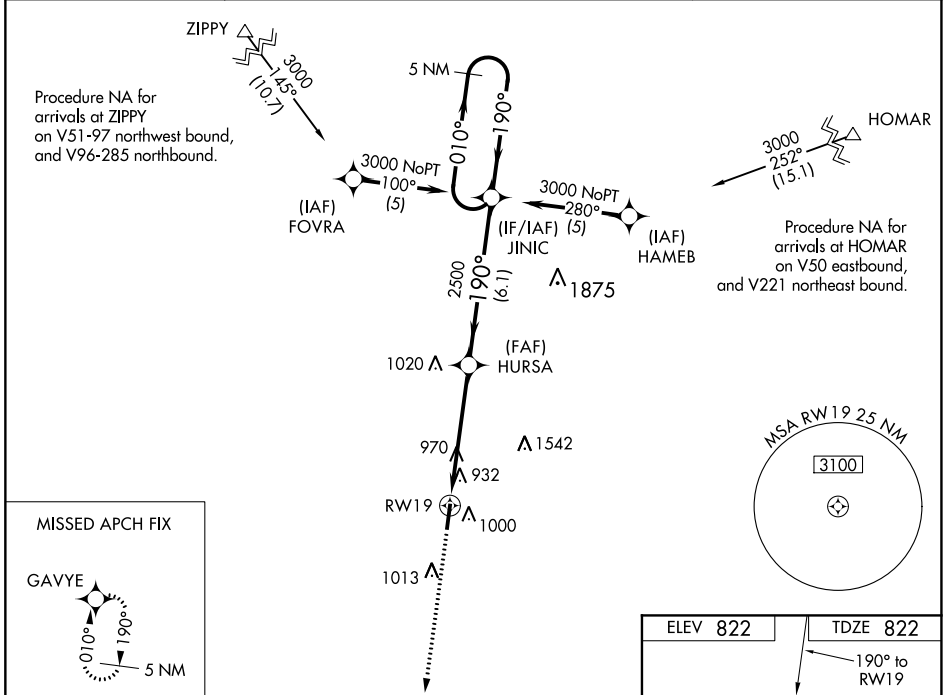


WAAS CH <b>53703</b> <b>W19A</b>	APP CRS <b>190°</b>	Rwy Idg TDZE Apt Elev	<b>5002</b> <b>822</b> <b>822</b>
--	------------------------	-----------------------------	---

# RNAV (GPS) RWY 19

INDY SOUTH GREENWOOD (HF'Y)

RNP APCH.		ODALS	MISSED APPROACH: Climb to 3100 direct GAVYE and hold.
<p>For uncompensated Baro-VNAV systems, LNAV/VNAV NA below -16°C or above 54°C. Baro-VNAV and VDP NA when using Indianapolis Intl altimeter setting. Rwy 19 helicopter visibility reduction below 3/4 SM NA.</p>			
AWOS-3P <b>118.525</b>	INDIANAPOLIS APP CON <b>124.95 317.8</b>	GCO <b>121.725</b>	UNICOM <b>123.0 (CTAF)</b>



CATEGORY	A	B	C	D
LPV DA	1130-1	308 (400-1)		NA
LNAV/VNAV DA	1299-1 3/4	477 (500-1 3/4)		NA
LNAV MDA	1300-1	478 (500-1)	1300-1 3/8 478 (500-1 3/8)	NA
CIRCLING	1360-1 538 (600-1)	1380-1 558 (600-1)	1380-1 1/2 558 (600-1 1/2)	NA

EC-2, 27 JAN 2022 to 24 FEB 2022

EC-2, 27 JAN 2022 to 24 FEB 2022

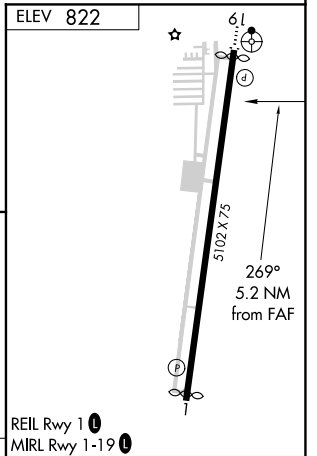
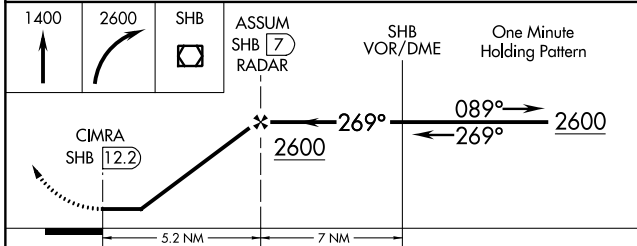
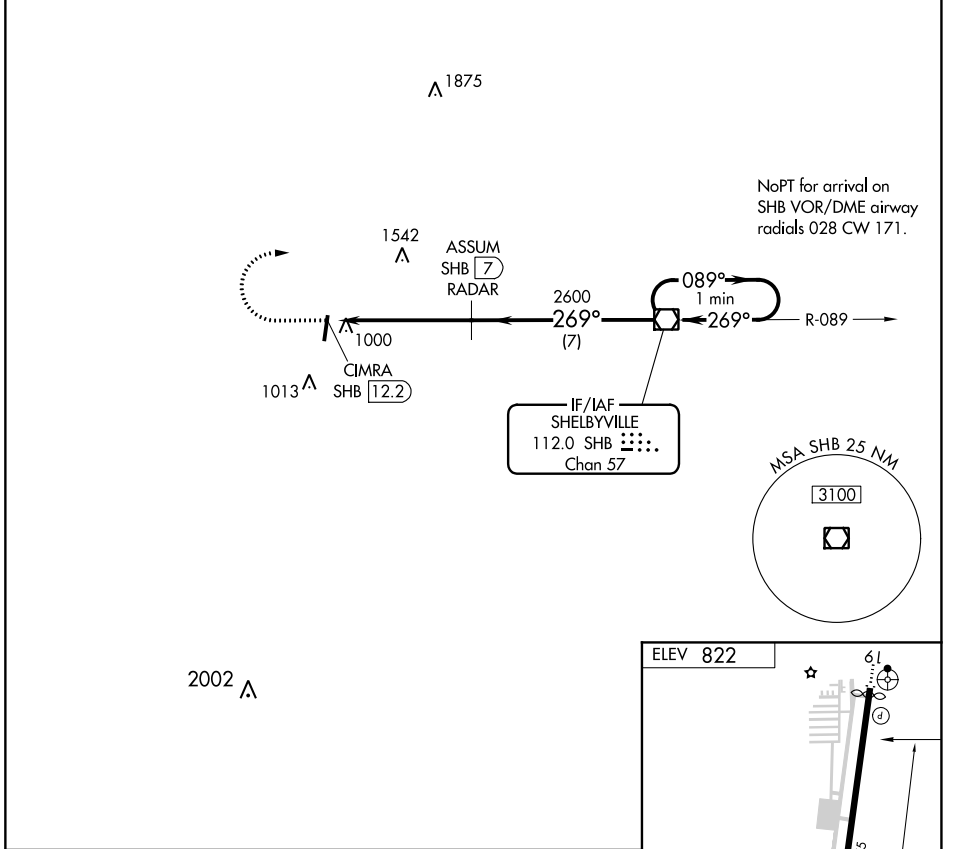
VOR/DME SHB <b>112.0</b> Chan <b>57</b>	APP CRS <b>269°</b>	Rwy Idg TDZE Apt Elev	<b>N/A</b> <b>N/A</b> <b>822</b>
---	------------------------	-----------------------------	--

**VOR-A**  
INDY SOUTH GREENWOOD (HF'Y)

**▼** Rwy 1, 19 helicopter visibility reduction below 3/4 SM NA. DME or RADAR REQUIRED.

MISSED APPROACH: Climb to 1400 then climbing right turn to 2600 direct SHB VOR/DME and hold.

AWOS-3P <b>118.525</b>	INDIANAPOLIS APP CON <b>124.95 317.8</b>	GCO <b>121.725</b>	UNICOM <b>123.0 (CTAF) 0</b>
---------------------------	---	-----------------------	---------------------------------



CATEGORY	A	B	C	D	FAF to MAP 5.2 NM					
	1360-1 538 (600-1)	1380-1 558 (600-1)	1380-1½ 558 (600-1½)	NA	Knots	60	90	120	150	180
	Min:Sec	5:12	3:28	2:36	2:05	1:44				

EC-2, 27 JAN 2022 to 24 FEB 2022

EC-2, 27 JAN 2022 to 24 FEB 2022