


LOC I-HHR	APP CRS	Rwy Idg	<b>4193</b>
<b>109.1</b>	<b>253°</b>	TDZE	<b>63</b>
		Apt Elev	<b>66</b>

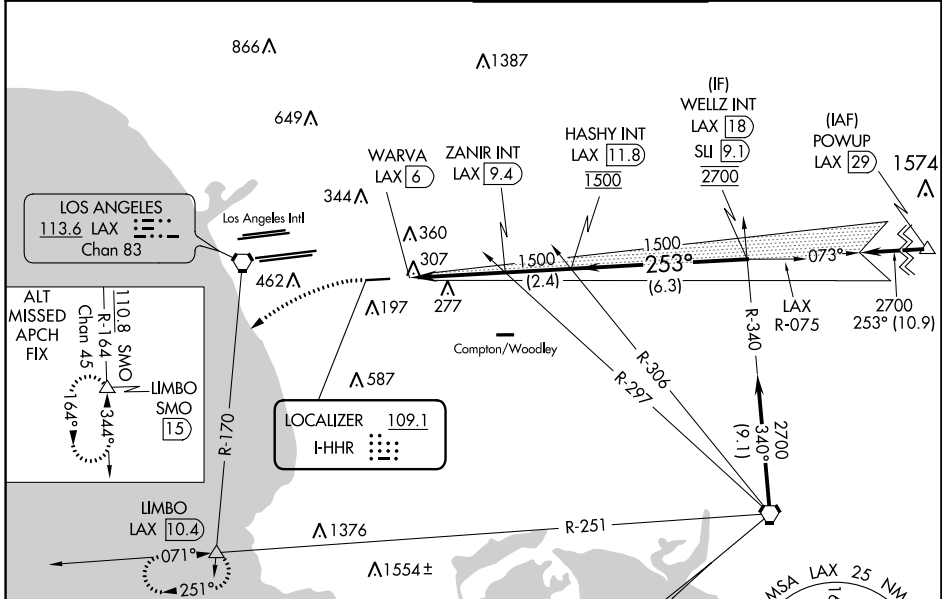
# LOC RWY 25

JACK NORTHROP FLD/HAWTHORNE MUNI (HHR)

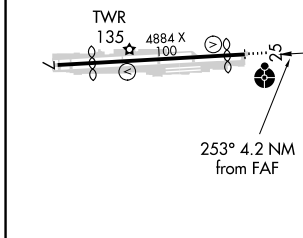
**⚠** Inop table does not apply. Rwy 25 helicopter visibility reduction below 1 SM NA. Circling Rwy 7 NA at night. When local altimeter setting not received, use Los Angeles Intl altimeter setting. Simultaneous approach authorized with LAX 25L/R 24L/R. Circling NA north of Rwy 7-25. DME from LAX VORTAC. Simultaneous reception of I-HHR and LAX DME required.

**ODALS**  
  
**MISSED APPROACH:** Climbing left turn to 3000 on heading 210° and LAX VORTAC R-170 to LIMBO INT/LAX 10.4 DME and hold.

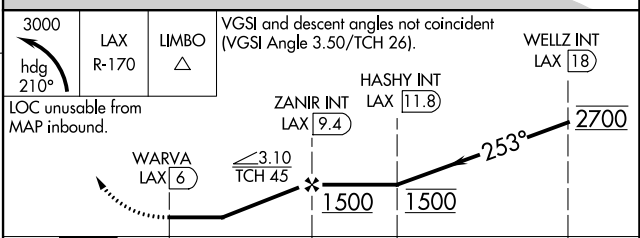
ATIS <b>118.4</b>	LOCAL APP CON <b>124.9 269.0</b>	HAWTHORNE TOWER* <b>121.1(CTAF) 0 257.8</b>	GND CON <b>125.1</b>
----------------------	-------------------------------------	--	-------------------------



ELEV 66	<b>D</b>	TDZE 63
---------	----------	---------



Procedure NA for arrivals at SLI VORTAC on V459-597 southeast bound.



	A	B	C	D
CATEGORY	A	B	C	D
S-25	580-1	517 (600-1)	580-1 $\frac{3}{8}$	517 (600-1 $\frac{3}{8}$ )
<b>C</b> CIRCLING	620-1	554 (600-1)	780-2 714 (800-2)	780-2 $\frac{1}{4}$ 714 (800-2 $\frac{1}{4}$ )

# LOC RWY 25

SW-3, 22 FEB 2024 to 21 MAR 2024

SW-3, 22 FEB 2024 to 21 MAR 2024

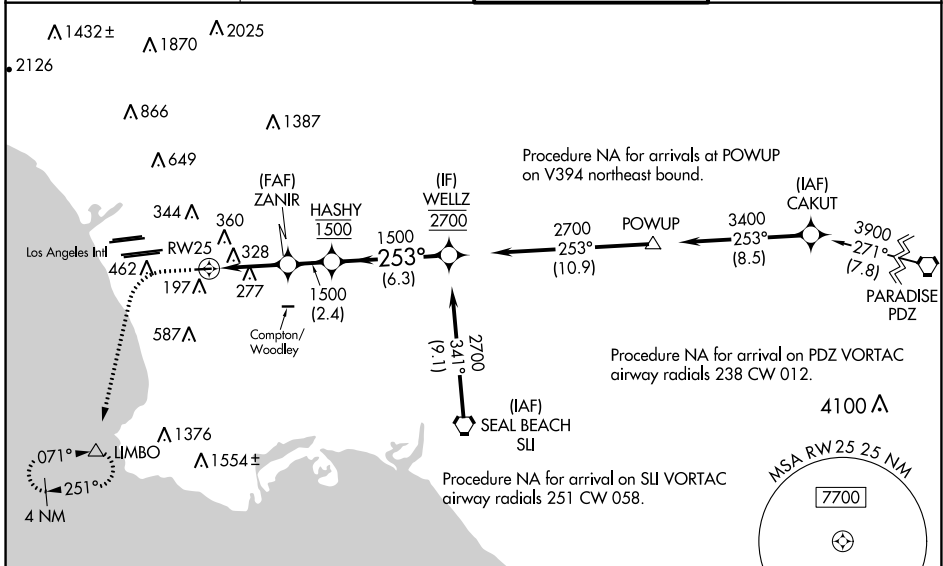
WAAS CH <b>65825</b> <b>W25A</b>	APP CRS <b>253°</b>	Rwy Idg TDZE <b>63</b> Apt Elev <b>66</b>
--	------------------------	---

# RNAV (GPS) RWY 25

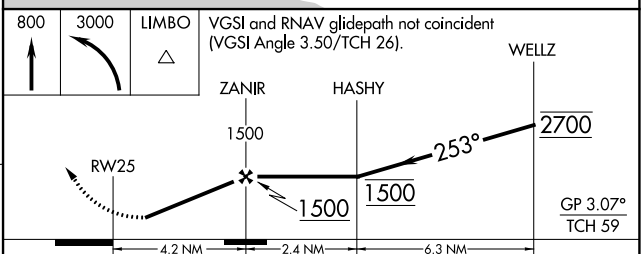
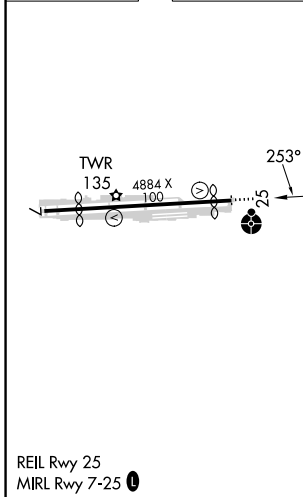
JACK NORTHROP FLD/HAWTHORNE MUNI (HHR)

RNP APCH - GPS.		MISSED APPROACH: Climb to 800 then climbing left turn to 3000 direct LIMBO and hold, continue climb-in-hold to 3000.
⚠️ Circling NA north of Rwy 7-25. Rwy 25 helicopter visibility reduction below 1 SM NA. For uncompensated Baro-VNAV systems, LNAV/VNAV NA below 5°C or above 54°C. Inop table does not apply. Simultaneous approach authorized. LNAV procedure NA during simultaneous operations. Use of FD or AP required during simultaneous operations. Circling Rwy 7 NA at night.		

ATIS <b>118.4</b>	SOCAL APP CON <b>124.9 269.0</b>	HAWTHORNE TOWER ★ <b>121.1</b> (CTAF) <b>0 257.8</b>	GND CON <b>125.1</b>
----------------------	-------------------------------------	---	-------------------------



ELEV <b>66</b>	<b>D</b> TDZE <b>63</b>
----------------	-------------------------



	A	B	C	D
LPV DA	577-1 $\frac{3}{8}$ 514 (600-1 $\frac{3}{8}$ )			
LNAV/VNAV DA	580-1 $\frac{3}{8}$ 517 (600-1 $\frac{3}{8}$ )			
LNAV MDA	580-1	517 (600-1)	580-1 $\frac{3}{8}$	517 (600-1 $\frac{3}{8}$ )
<b>C</b> CIRCLING	620-1	554 (600-1)	780-2 714 (800-2)	780-2 $\frac{1}{4}$ 714 (800-2 $\frac{1}{4}$ )

# RNAV (GPS) RWY 25

SW-3, 22 FEB 2024 to 21 MAR 2024

SW-3, 22 FEB 2024 to 21 MAR 2024

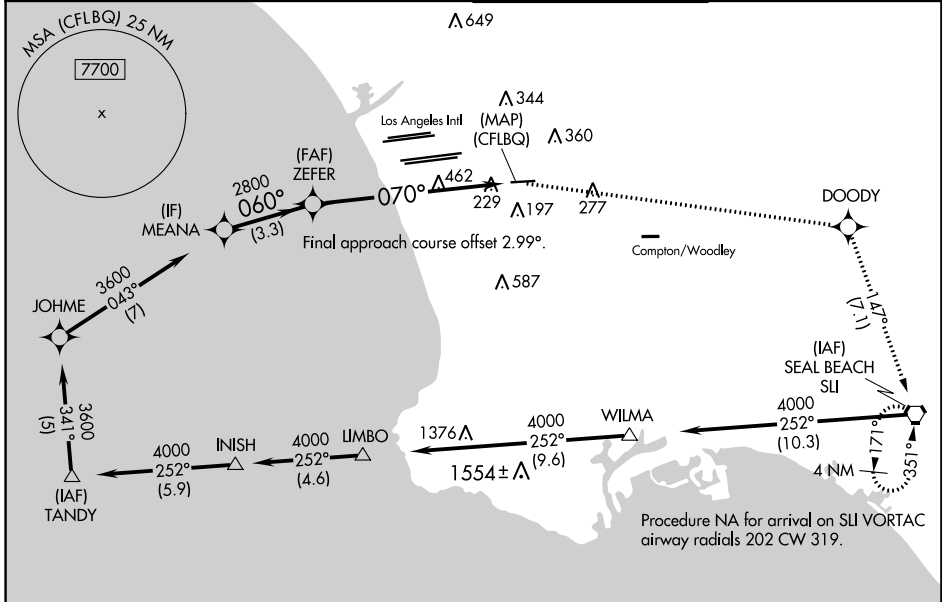
WAAS CH <b>40344</b> <b>W07A</b>	APP CRS <b>070°</b>	Rwy Idg <b>3765</b> TDZE <b>64</b> Apt Elev <b>66</b>
--	------------------------	---

# RNAV (GPS) RWY 7

JACK NORTHROP FLD/HAWTHORNE MUNI (HHR)

RNP APCH - GPS.	<p><b>⚠</b> Procedure NA at night. Rwy 7 helicopter visibility reduction below 1 SM NA. For uncompensated Baro-VNAV systems, LNAV/VNAV NA below 5°C or above 51°C. Circling NA north of Rwy 7-25.</p>	<p><b>⚠</b> MISSED APPROACH: Climb to 4000 direct DOODY and right turn on 147° track to SLI VORTAC and hold, continue climb-in-hold to 4000.</p>
-----------------	---	--

<p>ATIS <b>118.4</b></p>	<p>SOCAL APP CON <b>124.9 269.0</b></p>	<p>HAWTHORNE TOWER * <b>121.1(CTAF) 0 257.8</b></p>	<p>GND CON <b>125.1</b></p>
------------------------------	---	---	---------------------------------

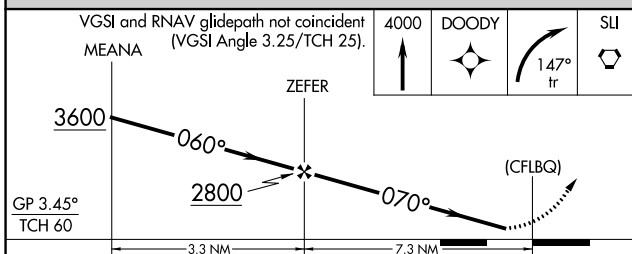


SW-3, 22 FEB 2024 to 21 MAR 2024

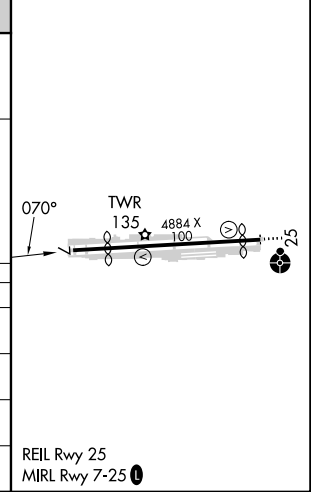
SW-3, 22 FEB 2024 to 21 MAR 2024

Procedure NA for arrival on SLI VORTAC airway radials 202 CW 319.

ELEV 66	<b>D</b> TDZE 64
---------	------------------



CATEGORY	A	B	C	D
LPV DA	342-1 278 (300-1)			
LNAV/VNAV DA	500-1¼ 436 (500-1¼)			
LNAV MDA	780-1	716 (800-1)	780-2	716 (800-2)
<b>C</b> CIRCLING	780-1	714 (800-1)	780-2	780-2¼
			714 (800-2)	714 (800-2¼)



# RNAV (GPS) RWY 7

VORTAC LAX <b>113.6</b> Chan 83	APP CRS <b>261°</b>	Rwy Idg TDZE Apt Elev <b>4193</b> <b>63</b> <b>66</b>
---------------------------------------	------------------------	--

# VOR RWY 25

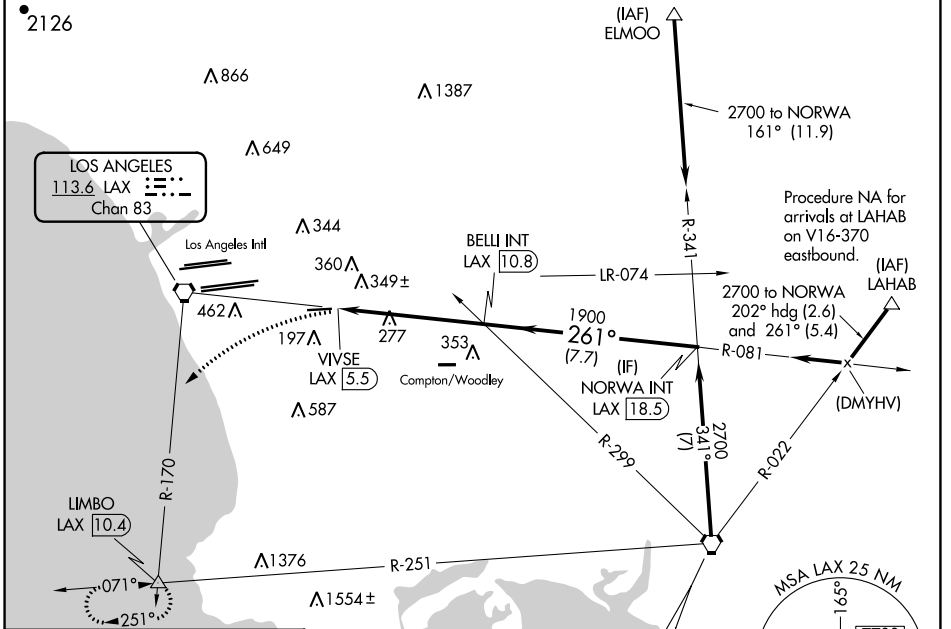
JACK NORTHROP FLD/HAWTHORNE MUNI (HHR)

**⚠** Circling NA north of Rwy 7-25. Rwy 25 helicopter visibility reduction below 1 SM NA. When local altimeter setting not received, use Los Angeles Intl altimeter setting. Circling Rwy 7 NA at night. Inop table does not apply to S-25 Cats A and B. For inop ALS, increase S-25 Cats C/D visibility to 1/8.

**ODALS**

**MISSED APPROACH:** Climbing left turn to 3000 via heading 210° and LAX VORTAC R-170 to LIMBO INT/LAX 10.4 DME and hold.

ATIS <b>118.4</b>	SOCAL APP CON <b>124.9 269.0</b>	HAWTHORNE TOWER ★ <b>121.1 (CTAF) 0 257.8</b>	GND CON <b>125.1</b>
----------------------	-------------------------------------	--	-------------------------

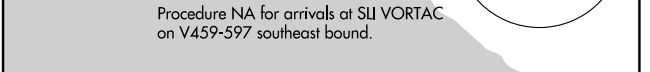


ELEV 66	TDZE 63
---------	---------



Procedure NA for arrivals at LAHAB on V16-370 eastbound.

Procedure NA for arrivals at SLI VORTAC on V459-597 southeast bound.



3000 hdg 210°

VGSJ and descent angles not coincident (VGSJ Angle 3.50/TCH 26).

NORWA INT LAX 18.5

BELL INT LAX 10.8

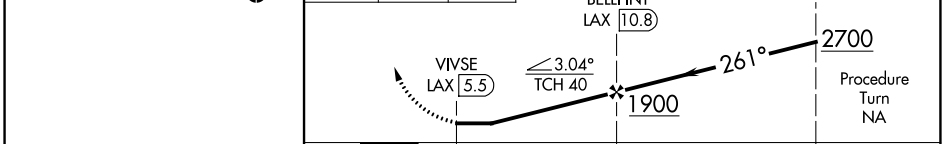
VIVSE LAX 5.5

261°

1900

2700

Procedure Turn NA



	A	B	C	D
REIL Rwy 25 MIRL Rwy 7-25				
FAF to MAP 5.3 NM				
Knots	60	90	120	150
Min:Sec	5:18	3:32	2:39	2:07
180				
1:46				
<b>☑</b> CIRCLING	620-1	554 (600-1)	780-2 714 (800-2)	780-2 1/4 714 (800-2 1/4)
S-25	620-1	557 (600-1)	620-1 3/8	557 (600-1 3/8)

# VOR RWY 25

SW-3, 22 FEB 2024 to 21 MAR 2024

SW-3, 22 FEB 2024 to 21 MAR 2024