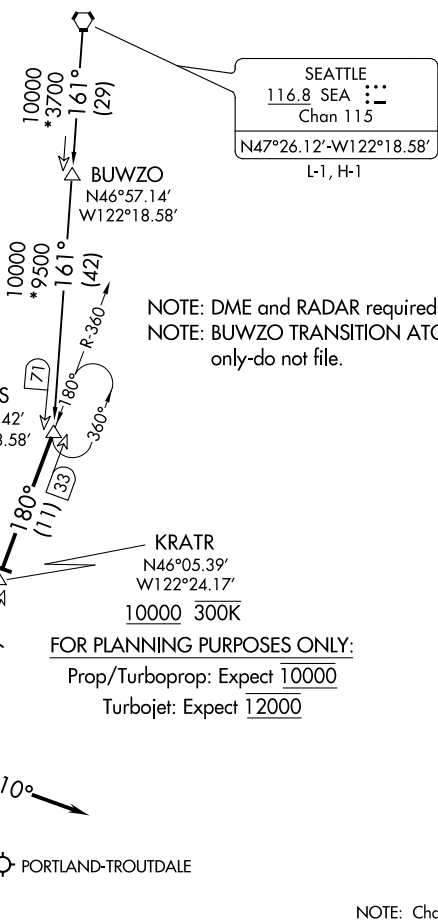


(HELNS.HELNS6) 20198
HELNS SIX ARRIVAL

AL-330 (FAA)

PORTLAND, OREGON

PORTLAND APP CON
 124.35 299.2
 HIO ATIS
 127.65
 PDX D-ATIS
 128.35 269.9



SEATTLE
 116.8 SEA
 Chan 115
 N47°26.12'-W122°18.58'
 L-1, H-1

NOTE: DME and RADAR required.
 NOTE: BUWZO TRANSITION ATC assigned
 only-do not file.

BATTLE GROUND
 116.6 BTG
 Chan 113
 N45°44.87'-W122°35.49'

KRATR
 N46°05.39'
 W122°24.17'
 10000 300K

FOR PLANNING PURPOSES ONLY:

Prop/Turboprop: Expect 10000
 Turbojet: Expect 12000

Ldg all airports



NOTE: Chart not to scale.

ARRIVAL ROUTE DESCRIPTION

BUWZO TRANSITION (BUWZO.HELNS6): From over BUWZO via SEA R-161 to HELNS. Thence. . .

SEATTLE TRANSITION (SEA.HELNS6): From over SEA VORTAC via SEA R-161 to HELNS. Thence. . .

. . . from over HELNS on BTG VORTAC R-360 to cross KRATR at or above 10000, then as depicted to cross BTG VORTAC at or above 7000.

LANDING EAST: From BTG VORTAC heading 280°, expect RADAR vectors to final approach course.

LANDING WEST: From BTG VORTAC heading 110°, expect RADAR vectors to final approach course.

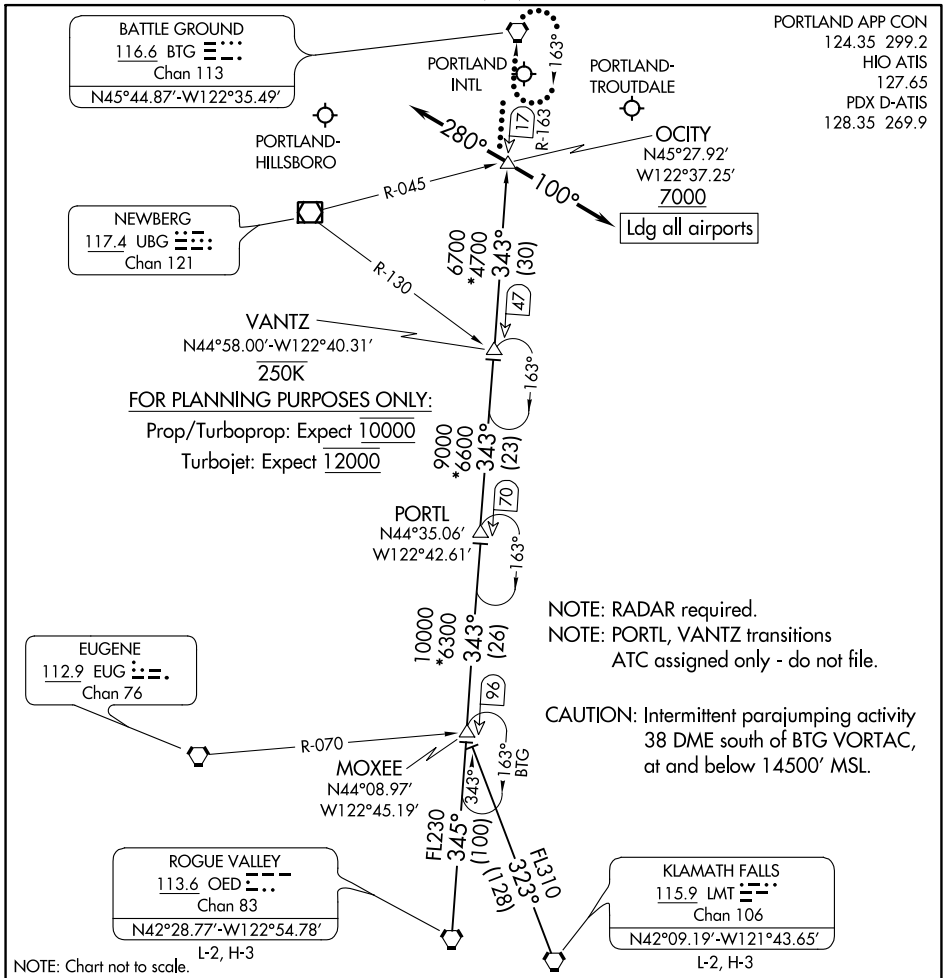
HELNS SIX ARRIVAL
 (HELNS.HELNS6) 29MAR18

PORTLAND, OREGON

NW-1, 07 OCT 2021 to 04 NOV 2021

NW-1, 07 OCT 2021 to 04 NOV 2021

OCITY THREE ARRIVAL



NOTE: RADAR required.
NOTE: PORTL, VANTZ transitions
ATC assigned only - do not file.

CAUTION: Intermittent parajumping activity
38 DME south of BTG VORTAC,
at and below 14500' MSL.

ARRIVAL ROUTE DESCRIPTION

KLAMATH FALLS TRANSITION (LMT.OCITY3): From over LMT VORTAC on LMT R-323

to MOXEE, then on BTG R-163 to OCITY. Thence. . .

MOXEE TRANSITION (MOXEE.OCITY3): From over MOXEE on BTG R-163 to OCITY. Thence. . .

ROGUE VALLEY TRANSITION (OED.OCITY3): From over OED VORTAC on OED R-345 to

to MOXEE, then on BTG R-163 to OCITY. Thence. . .

PORTL TRANSITION (PORTL.OCITY3): From over PORTL on BTG R -163 to OCITY. Thence. . .

VANTZ TRANSITION (VANTZ.OCITY3): From over VANTZ on BTG R-163 to OCITY. Thence. . .

LANDING EAST: From OCITY heading 280°, expect RADAR vectors to final approach course.

LANDING WEST: From OCITY heading 100°, expect RADAR vectors to final approach course.

LOST COMMUNICATIONS: After OCITY, proceed direct BTG VORTAC and hold.

OCITY THREE ARRIVAL

NW-1, 07 OCT 2021 to 04 NOV 2021

NW-1, 07 OCT 2021 to 04 NOV 2021