

LOC I-HNZ <b>109.75</b>	APP CRS <b>060°</b>	Rwy Idg TDZE Apt Elev	<b>5501</b> <b>526</b> <b>526</b>
----------------------------	------------------------	-----------------------------	---

# LOC RWY 6

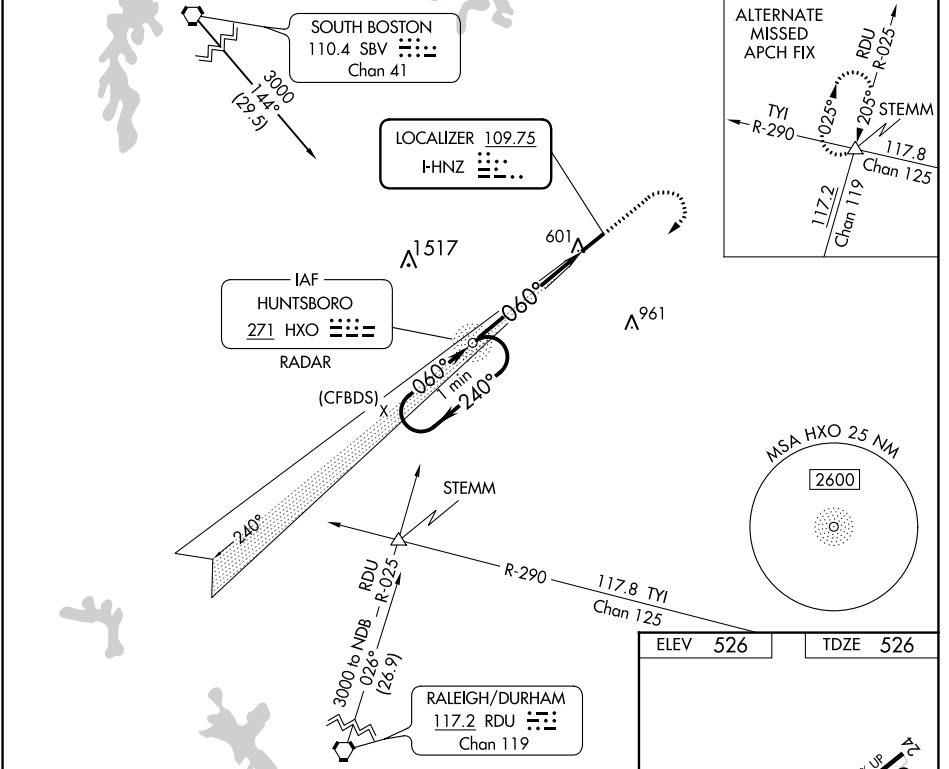
HENDERSON/OXFORD (HNZ)

ADF or RADAR required. ADF or RADAR required for procedure entry.

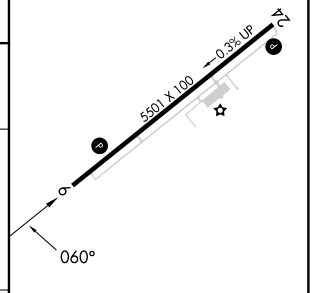
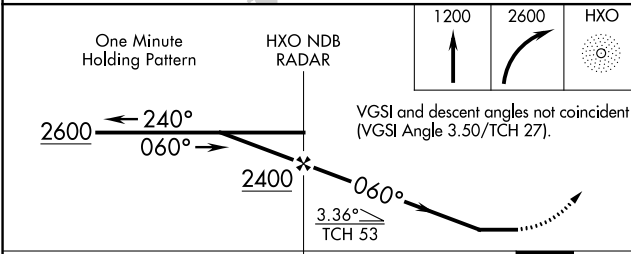
**▼** Rwy 6 helicopter visibility reduction below ¼ SM NA. When local altimeter setting not received, use Roxboro altimeter setting and increase all MDA 80 feet; increase S-6 Cat C/D visibility ½ SM and Circling Cat C and D visibility ¼ SM.

**▲** MISSED APPROACH: Climb to 1200 then climbing right turn to 2600 direct HXO NDB/RADAR and hold.

AWOS-3 <b>118.625</b>	RALEIGH APP CON <b>132.35 256.9</b>	UNICOM <b>122.8 (CTAF) 0</b>
--------------------------	--	---------------------------------



ELEV 526	TDZE 526
----------	----------



CATEGORY	A	B	C	D	REIL Rwy 6 0 MIRL Rwy 6-24 0
S-6	980-1	454 (500-1)	980-1 3/8	454 (500-1 3/8)	
CIRCLING	980-1	454 (500-1)	1100-1 1/2 574 (600-1 1/2)	1280-2 1/2 754 (800-2 1/2)	FAF to MAP 5.2 NM
					Knots: 60 90 120 150 180 Min:Sec: 5:12 3:28 2:36 2:05 1:44

SE-2, 22 FEB 2024 to 21 MAR 2024

SE-2, 22 FEB 2024 to 21 MAR 2024

WAAS CH <b>63009</b> <b>W24A</b>	APP CRS <b>240°</b>	Rwy Idg TDZE Apt Elev	<b>5501</b> <b>523</b> <b>526</b>
--	------------------------	-----------------------------	---

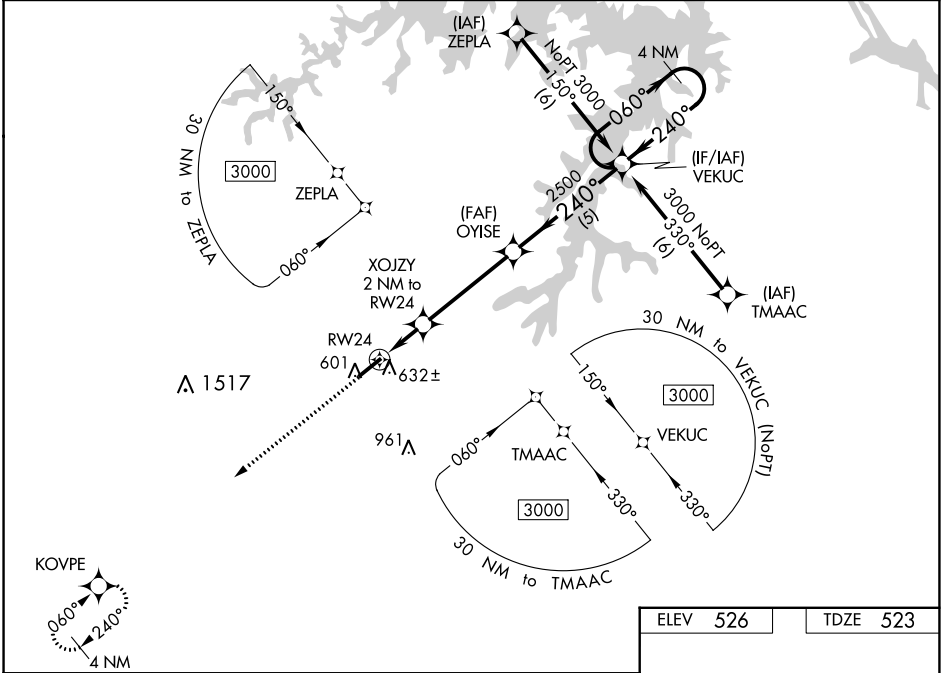
# RNAV (GPS) RWY 24

HENDERSON/OXFORD (HNZ)

**▼** For uncompensated Baro-VNAV systems, LNAV/VNAV NA below -16°C (4°F) or above 54°C (130°F).  
**▲** DME/DME RNP-0.3 NA. When local altimeter setting not received, use Roxboro altimeter setting and increase all DA 64 feet, and all MDA 80 feet; increase LPV all Cats visibility 1/8 mile, LNAV/VNAV all Cats and Circling Cats C and D visibility 1/4 mile, and LNAV Cats C and D 3/8 mile. Helicopter visibility reduction below 3/4 SM NA. Baro-VNAV and VDP NA when using Roxboro altimeter setting.

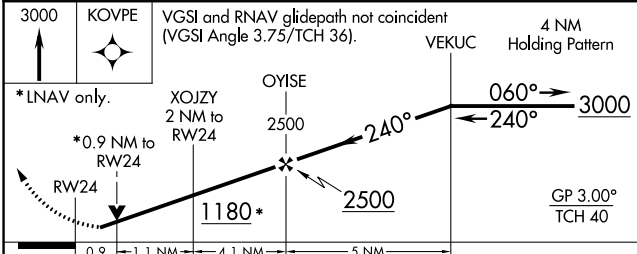
MISSED APPROACH: Climb to 3000 direct KOVPE and hold.

AWOS-3 <b>118.625</b>	RALEIGH APP CON <b>132.35 256.9</b>	UNICOM <b>122.8(CTAF)</b>
--------------------------	--	------------------------------



SE-2, 22 FEB 2024 to 21 MAR 2024

SE-2, 22 FEB 2024 to 21 MAR 2024



ELEV 526	TDZE 523
----------	----------

REIL Rwy 6  
MIRL Rwy 6-24

CATEGORY	A	B	C	D
LPV DA		773-7/8	250 (300-7/8)	
LNAV/VNAV DA		813-1	290 (300-1)	
LNAV MDA		900-1	377 (400-1)	
<b>C</b> CIRCLING	960-1 434 (500-1)	980-1 454 (500-1)	1100-1 1/2 574 (600-1 1/2)	1280-2 1/2 754 (800-2 1/2)

WAAS CH <b>45709</b> W06A	APP CRS <b>060°</b>	Rwy Idg <b>5501</b> TDZE <b>526</b> Apt Elev <b>526</b>
---------------------------------	------------------------	---

# RNAV (GPS) RWY 6

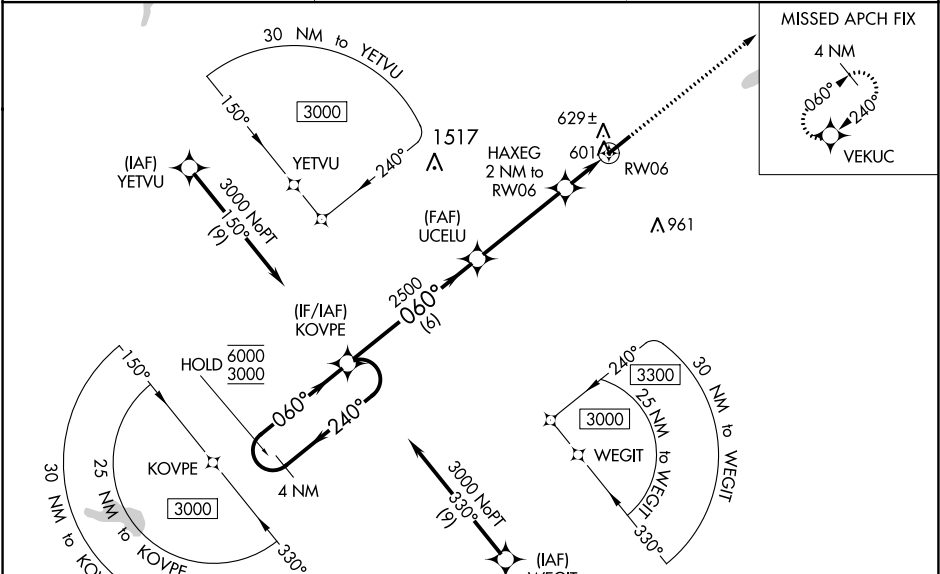
HENDERSON/OXFORD (HNZ)

RNP APCH - GPS.

▼ For uncompensated Baro-VNAV systems, LNAV/VNAV NA below -16°C or above 54°C.  
 ▲ When local altimeter setting not received, use Roxboro altimeter setting: increase all DA to 875 feet and all visibilities 1/8 SM; increase all MDA 80 feet and visibility Cats C and D 1/4 SM. Baro-VNAV and VDP NA when using Roxboro altimeter setting.  
 Rwy 6 helicopter visibility reduction below 1/4 SM NA.

MISSED APPROACH: Climb to 3000 direct VEKUC and hold.

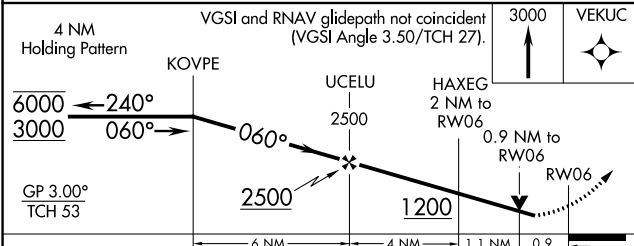
AWOS-3 <b>118.625</b>	RALEIGH APP CON <b>132.35 256.9</b>	UNICOM <b>122.8(CTAF)</b>
--------------------------	--	------------------------------



SE-2, 22 FEB 2024 to 21 MAR 2024

SE-2, 22 FEB 2024 to 21 MAR 2024

ELEV 526	TDZE 526
----------	----------



CATEGORY	A	B	C	D
LPV DA		811-7/8	285 (300-7/8)	
LNAV/VNAV DA		810-7/8	284 (300-7/8)	
LNAV MDA		880-1	354 (400-1)	
CIRCLING	960-1	980-1	1100-1 1/2	1280-2 1/2
	434 (500-1)	454 (500-1)	574 (600-1 1/2)	754 (800-2 1/2)

