

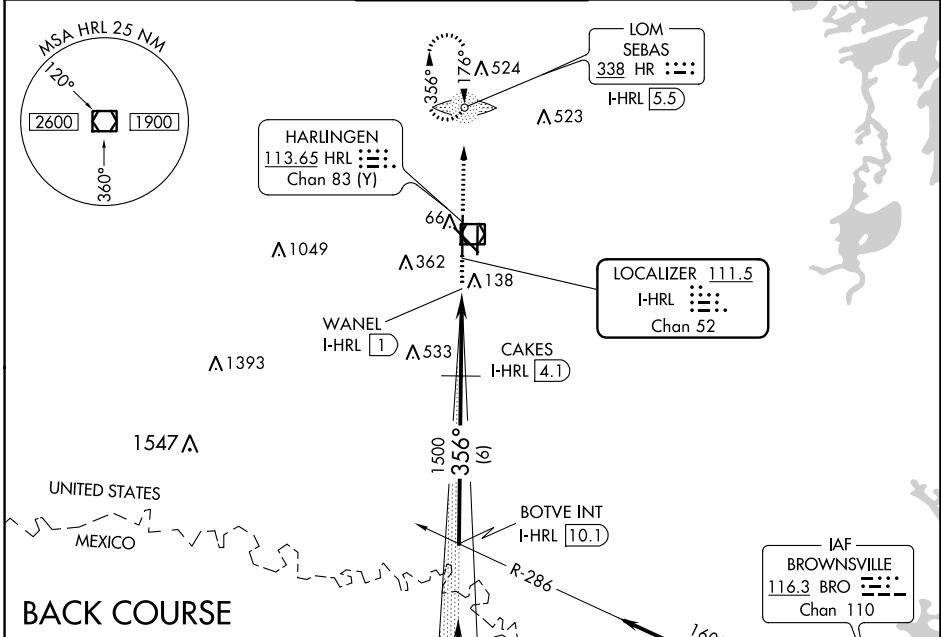
LOC/DME I-HRL 111.5 Chan 52	APP CRS 356°	Rwy Idg TDZE Apt Elev	8301 36 36
--	------------------------	-----------------------------	---------------------------------------

LOC/DME BC RWY 35L

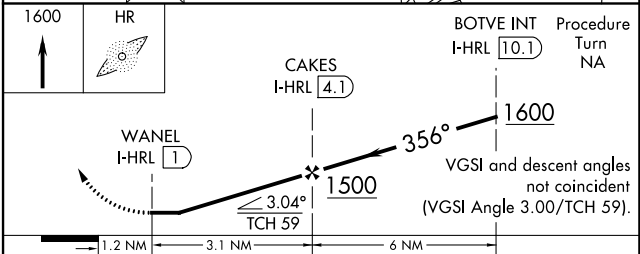
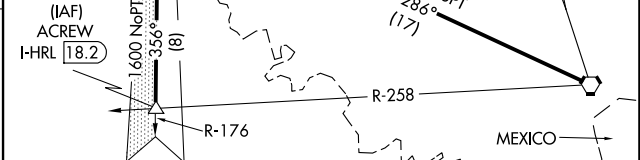
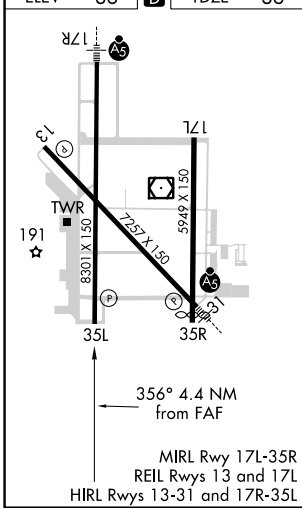
VALLEY INTL (H.R.L.)

⚠ LOC BC unusable from 1NM inbound. Disregard glide slope indications. **MISSED APPROACH:** Climb to 1600 via I-HRL north course to SEBAS/I-HRL 5.5 DME and hold.

ATIS 124.85	VALLEY APP CON 120.7 279.5	HARLINGEN TOWER ★ 119.3 (CTAF) 317.6	GND CON 121.7	UNICOM 122.95
-----------------------	--------------------------------------	--	-------------------------	-------------------------



BACK COURSE



CATEGORY	A	B	C	D
S-35L	420-1½	384 (400-1½)		
C CIRCLING	500-1½ 464 (500-1½)	560-1½ 524 (600-1½)	680-1¾ 644 (700-1¾)	680-2 644 (700-2)

SC-3, 22 FEB 2024 to 21 MAR 2024

SC-3, 22 FEB 2024 to 21 MAR 2024

WAAS CH 90430 W17B	APP CRS 176°	Rwy Idg TDZE Apt Elev	5949 34 36
--	------------------------	-----------------------------	---------------------------------------

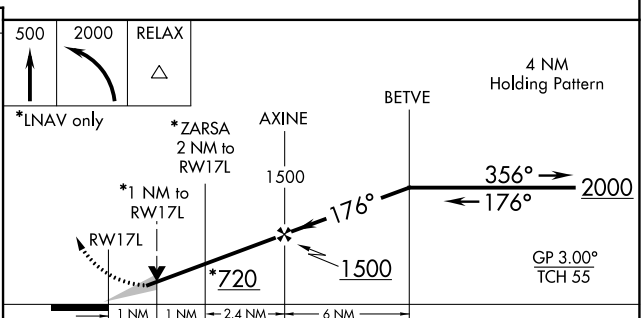
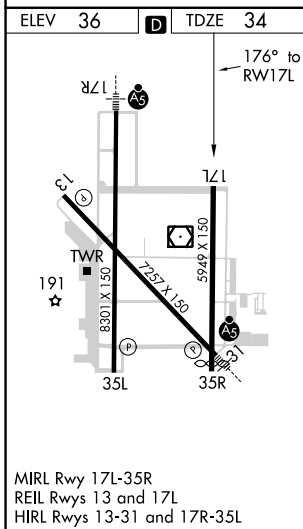
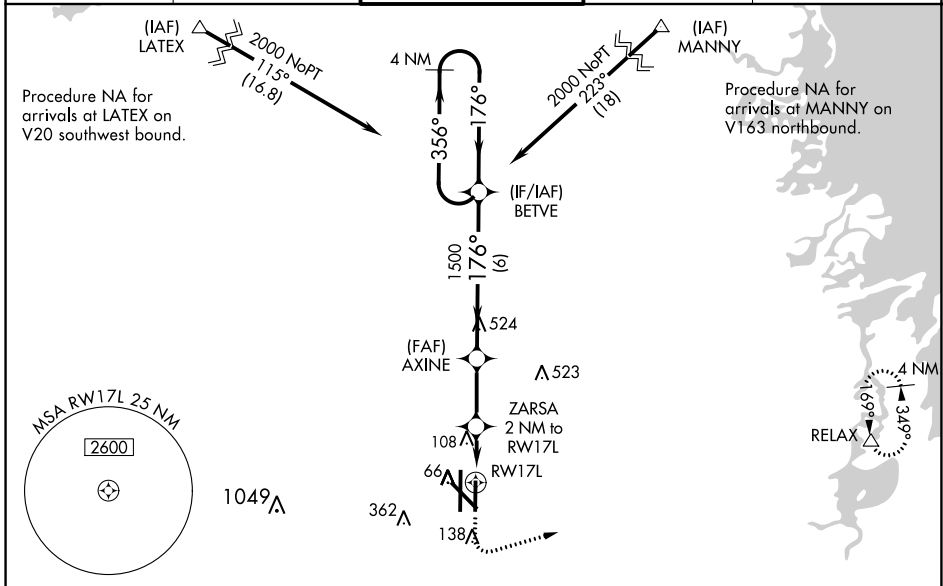
RNAV (GPS) RWY 17L

VALLEY INTL (HRL)

⚠ For uncompensated Baro-VNAV systems, LNAV/VNAV NA below -15°C (5°F) or above 54°C (130°F). DME/DME RNP-0.3 NA. When local altimeter setting not received, use Port Isabel altimeter setting: increase LPV DA to 326 feet and all visibilities 1/8 SM; increase LNAV/VNAV DA to 392 feet and all visibilities 1/8 SM; increase all MDAs 60 feet and visibility Cats C and D 1/4 SM. Baro-VNAV and VDP NA with Port Isabel altimeter setting.

MISSED APPROACH:
Climb to 500 then climbing left turn to 2000 direct RELAX and hold.

ATIS 124.85	VALLEY APP CON 120.7 279.5	HARLINGEN TOWER ★ 119.3(CTAF) 0 317.6	GND CON 121.7	UNICOM 122.95
-----------------------	--------------------------------------	---	-------------------------	-------------------------



CATEGORY	A	B	C	D
LPV DA		284-3/4	250 (300-3/4)	
LNAV/VNAV DA		350-1 1/8	316 (400-1 1/8)	
LNAV MDA		400-1	366 (400-1)	
C CIRCLING	500-1 464 (500-1)	560-1 524 (600-1)	680-1 3/4 644 (700-1 3/4)	680-2 644 (700-2)

SC-3, 22 FEB 2024 to 21 MAR 2024

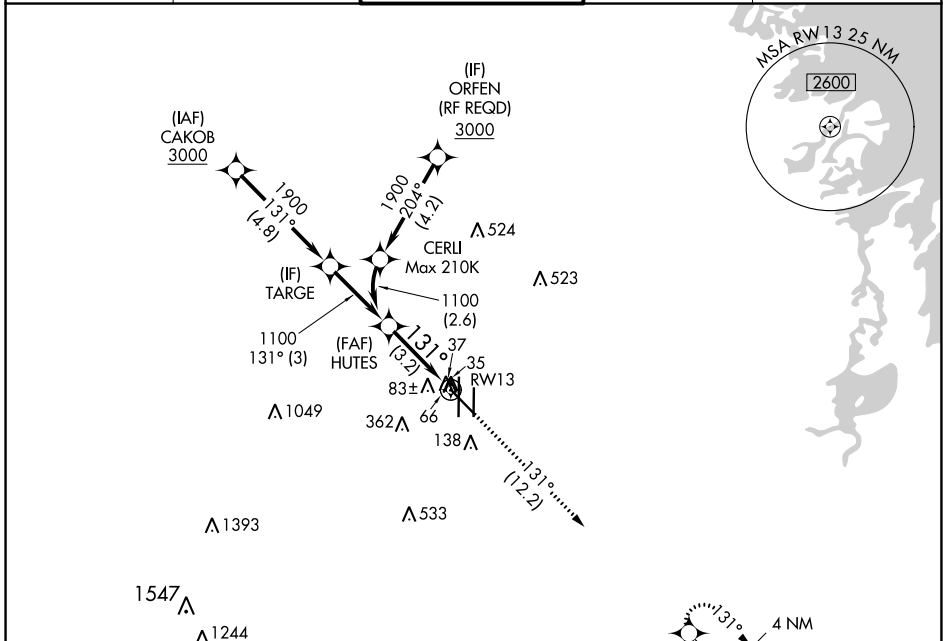
SC-3, 22 FEB 2024 to 21 MAR 2024

APP CRS	Rwy Idg	7257
131°	TDZE	35
	Apt Elev	36

RNAV (RNP) Z RWY 13

VALLEY INTL (HRL)

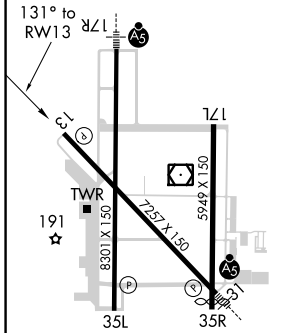
<p>▼ For uncompensated Baro-VNAV systems, procedure NA below 2°C (36°F) or above 54°C (130°F). GPS required.</p>		<p>MISSED APPROACH: Climb to 2000 on track 131° to AMAPE and hold.</p>		
<p>ATIS</p> <p>124.85</p>	<p>VALLEY APP CON</p> <p>120.7 279.5</p>	<p>HARLINGEN TOWER ★</p> <p>119.3 (CTAF) 0 317.6</p>	<p>GND CON</p> <p>121.7</p>	<p>UNICOM</p> <p>122.95</p>



SC-3, 22 FEB 2024 to 21 MAR 2024

SC-3, 22 FEB 2024 to 21 MAR 2024

ELEV	36	D	TDZE	35
------	----	----------	------	----

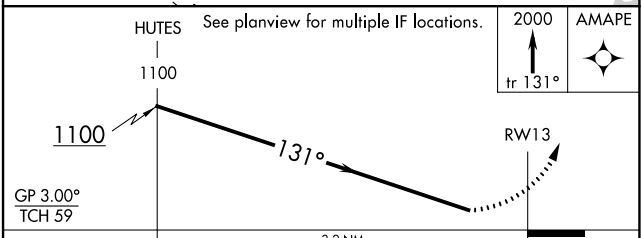


MIRL Rwy 17L-35R
 REIL Rwys 13 and 17L
 HIRL Rwys 13-31 and 17R-35L

UNITED STATES

MEXICO

RADAR REQUIRED



GP 3.00°				
TCH 59				
CATEGORY	A	B	C	D
RNP 0.15 DA	302-7/8 267 (300-7/8)			
RNP 0.30 DA	393-1/8 358 (400-1/8)			

AUTHORIZATION REQUIRED

APP CRS	Rwy Idg	8301
176°	TDZE	35
	Apt Elev	36

RNAV (RNP) Z RWY 17R

VALLEY INTL (HRL)

RNP AR APCH - GPS.

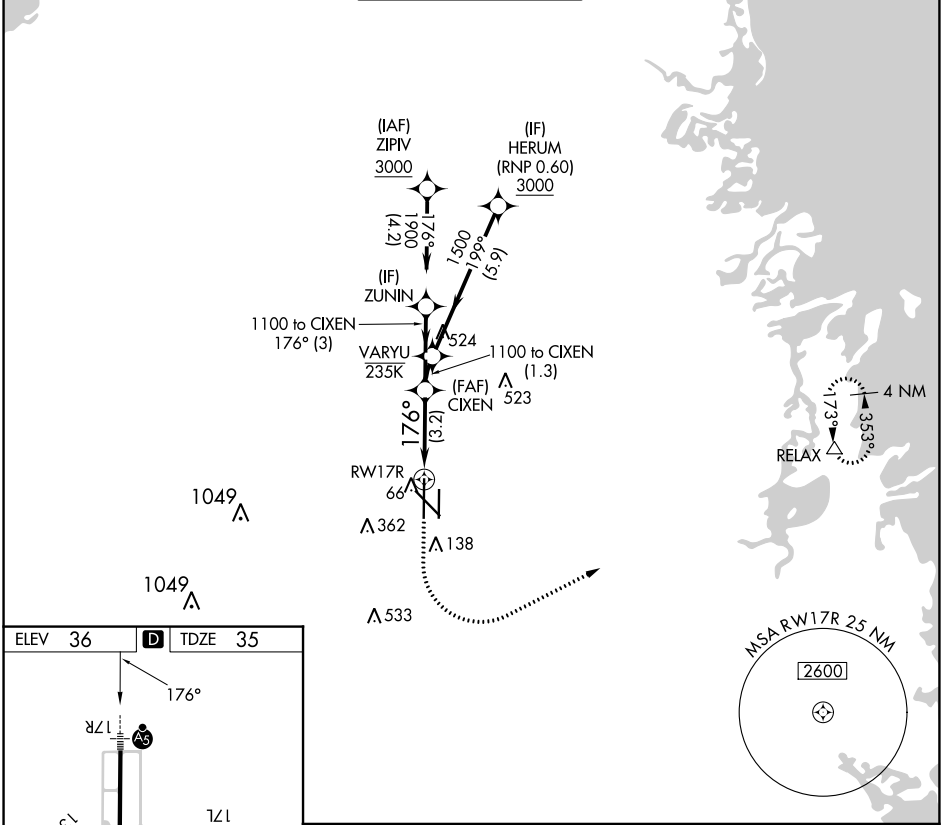
MALSR



MISSED APPROACH: Climb to 500 then climbing left turn to 2000 direct RELAX and hold.

For uncompensated Baro-VNAV systems, procedure NA below -1°C or above 54°C. For inop ALS, increase RNP 0.30 all Cats visibility to RVR 4500.

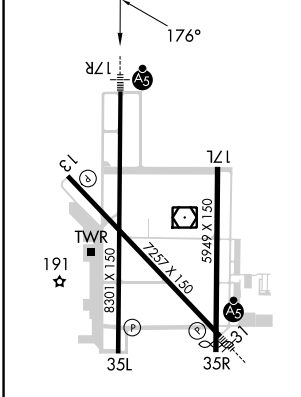
ATIS 124.85	VALLEY APP CON 120.7 279.5	HARLINGEN TOWER★ 119.3(CTAF) 0 317.6	GND CON 121.7	UNICOM 122.95
-----------------------	--------------------------------------	--	-------------------------	-------------------------



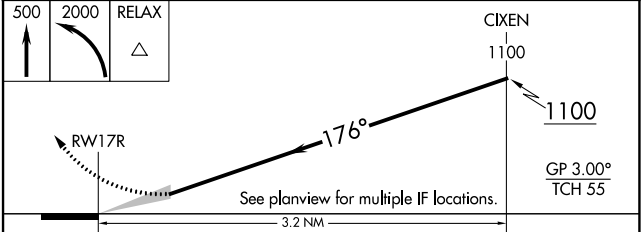
SC-3, 22 FEB 2024 to 21 MAR 2024

SC-3, 22 FEB 2024 to 21 MAR 2024

ELEV 36	D	TDZE 35
---------	----------	---------



MIRL Rwy 17L-35R
 REIL Rwys 13 and 17L
 HIRL Rwys 13-31 and 17R-35L



CATEGORY	A	B	C	D
RNP 0.30 DA		345/24	310 (400-1/2)	


AUTHORIZATION REQUIRED

APP CRS 311°	Rwy ldg 7257
	TDZE 36
	Apt Elev 36

RNAV (RNP) Z RWY 31

VALLEY INTL (HRL)

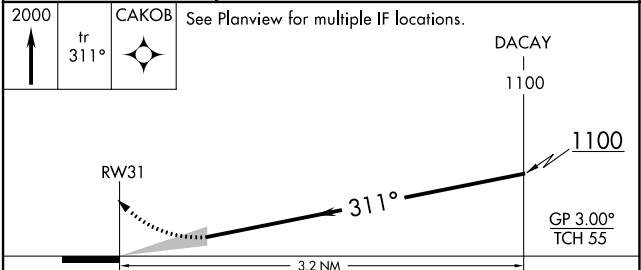
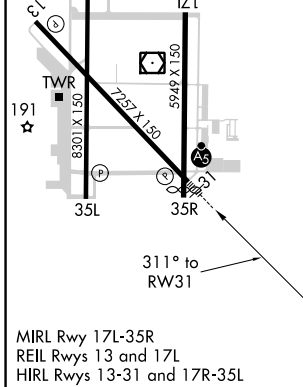
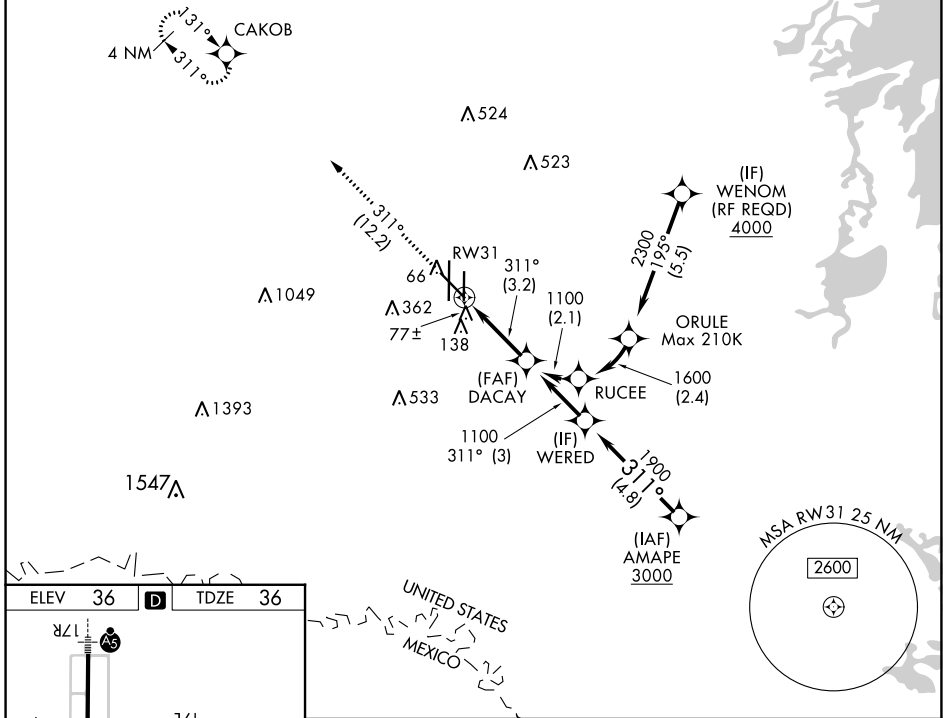
▼ For uncompensated Baro-VNAV systems, procedure NA below 2°C (36°F) or above 54°C (130°F). GPS Required. For inop ALS, increase RNP 0.17 all Cats visibility to ½ SM, and RNP 0.30 all Cats visibility 1 SM.

MALS R 

MISSED APPROACH: Climb to 2000 on track 311° to CAKOB and hold.

ATIS 124.85	VALLEY APP CON 120.7 279.5	HARLINGEN TOWER ★ 119.3 (CTAF) 317.6	GND CON 121.7	UNICOM 122.95
-----------------------	--------------------------------------	--	-------------------------	-------------------------

RADAR REQUIRED



CATEGORY	A	B	C	D
RNP 0.17 DA		310-½	274 (300-½)	
RNP 0.30 DA		360-⅝	324 (400-⅝)	

AUTHORIZATION REQUIRED

SC-3, 22 FEB 2024 to 21 MAR 2024

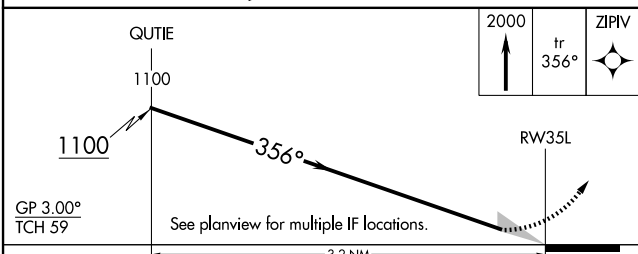
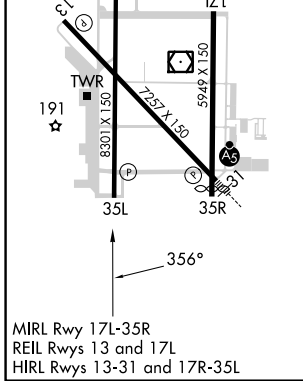
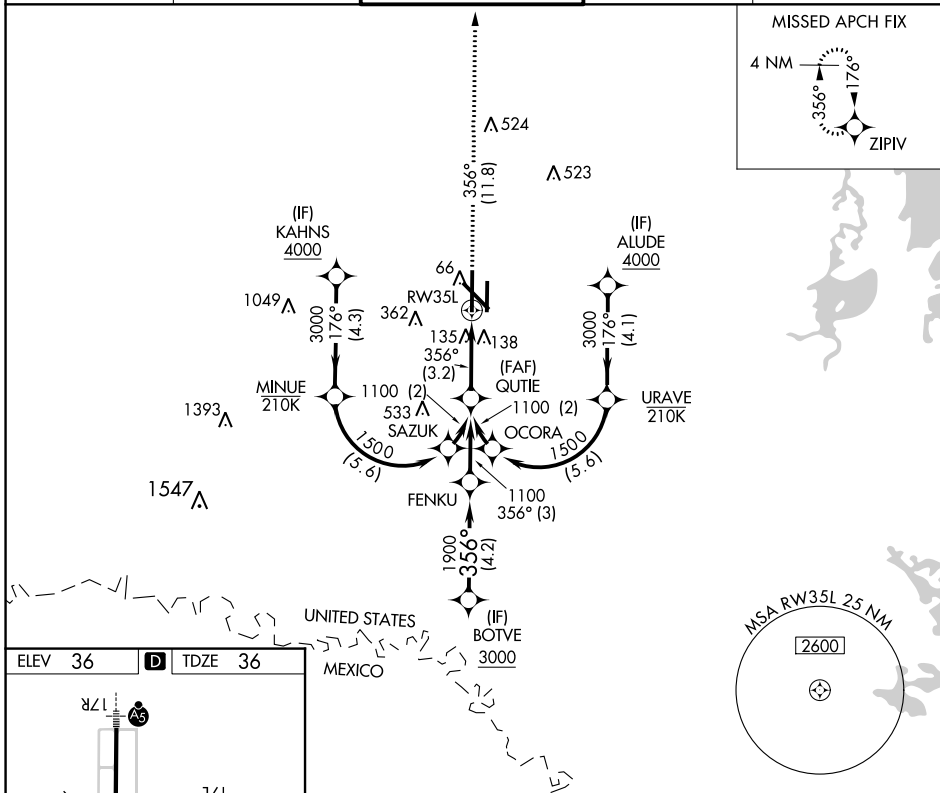
SC-3, 22 FEB 2024 to 21 MAR 2024

APP CRS	Rwy Idg	8301
356°	TDZE	36
	Apt Elev	36

RNAV (RNP) Z RWY 35L

VALLEY INTL (H.R.L.)

RNP AR APCH - GPS.		MISSED APPROACH: Climb to 2000 on track 356° to ZIPIV and hold.		
▼ For uncompensated Baro-VNAV systems, procedure NA below -1°C or above 54°C.				
ATIS	VALLEY APP CON	HARLINGEN TOWER★	GND CON	UNICOM
124.85	120.7 279.5	119.3(CTAF) 0 317.6	121.7	122.95



CATEGORY	A	B	C	D
RNP 0.14 DA		334-7/8	298 (300-7/8)	
RNP 0.30 DA		484-13/8	448 (500-13/8)	

AUTHORIZATION REQUIRED

SC-3, 22 FEB 2024 to 21 MAR 2024

SC-3, 22 FEB 2024 to 21 MAR 2024

WAAS CH 78230 W13A	APP CRS 131°	Rwy Idg TDZE Apt Elev	7257 35 36
---------------------------------	------------------------	-----------------------------	---------------------------------------

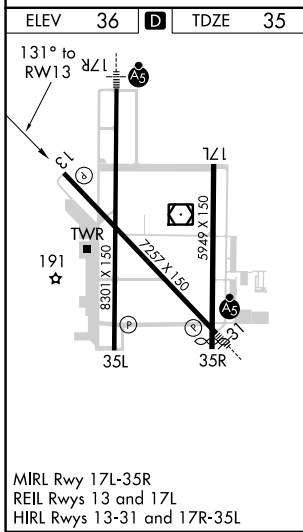
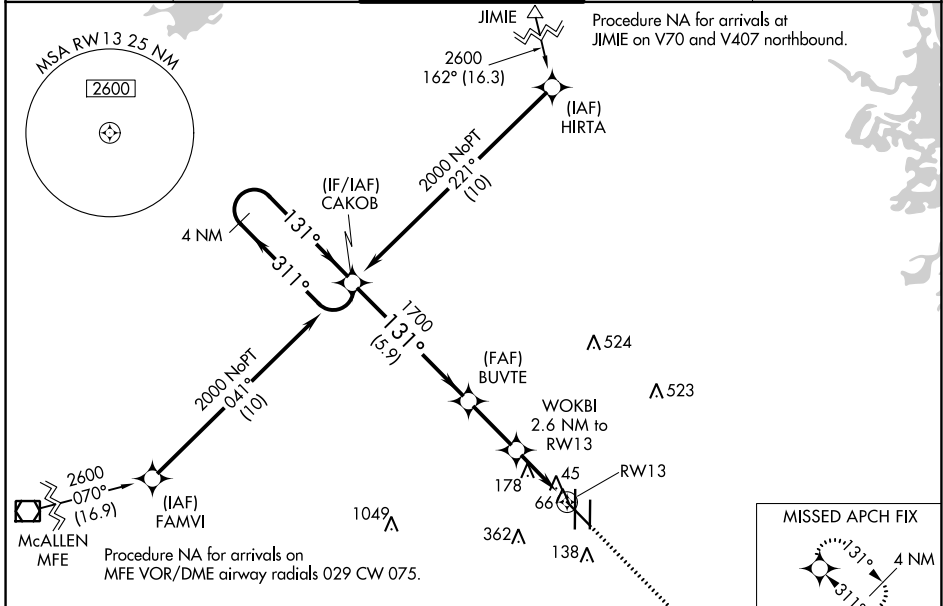
RNAV (GPS) Y RWY 13

VALLEY INTL (HRL)

⚠ For uncompensated Baro-VNAV systems, LNAV/VNAV NA below -15°C (5°F) or above 54°C (130°F). DME/DME RNP-0.3 NA. Visibility reduction by helicopters NA. When local altimeter setting not received, use Port Isabel altimeter setting: increase LPV DA to 327 feet and all visibilities 1/8 SM; increase LNAV/VNAV DA to 370 feet and all visibilities 1/8 SM; increase all MDAs 60 feet and visibility Cats C and D 1/4 SM. Baro-VNAV and VDP NA with Port Isabel altimeter setting.

MISSED APPROACH:
Climb to 2000 direct AMAPE and hold.

ATIS 124.85	VALLEY APP CON 120.7 279.5	HARLINGEN TOWER ★ 119.3 (CTAF) 0 317.6	GND CON 121.7	UNICOM 122.95
-----------------------	--------------------------------------	--	-------------------------	-------------------------



ELEV 36	D	TDZE 35		
<p>4 NM Holding Pattern CAKOB</p> <p>2000 ← 311° → 131° → 1700 → 131° → BUVTE WOKBI 2.6 NM to RW13</p> <p>GP 3.00° TCH 59</p> <p>1700 *920</p> <p>5.9 NM ← 2.4 NM ← 1.5 NM ← 1.1</p>				
2000	AMAPE			
*LNAV only *1.1 NM to RW13				
CATEGORY	A	B	C	D
LPV DA	285-3/4		250 (300-3/4)	
LNAV/VNAV DA	328-7/8		293 (300-7/8)	
LNAV MDA	440-1 405 (500-1)		440-1 1/8 405 (500-1 1/8)	
C CIRCLING	500-1 464 (500-1)	560-1 524 (600-1)	680-1 3/4 644 (700-1 3/4)	680-2 644 (700-2)

SC-3, 22 FEB 2024 to 21 MAR 2024

SC-3, 22 FEB 2024 to 21 MAR 2024

WAAS CH 50131 W17A	APP CRS 176°	Rwy ldg 8301 TDZE 35 Apt Elev 36
--	------------------------	---

RNAV (GPS) Y RWY 17R

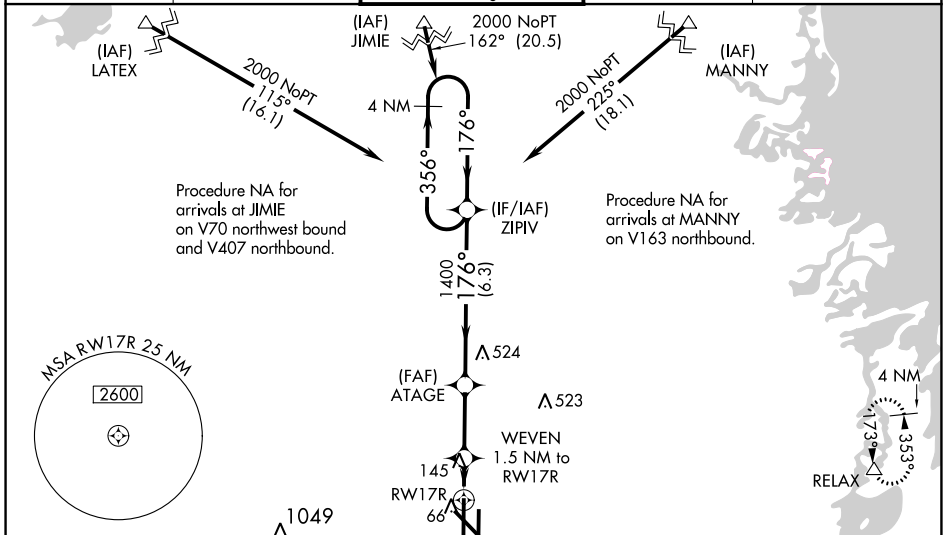
VALLEY INTL (HRL)

⚠ For uncompensated Baro-VNAV systems, LNAV/VNAV NA below 2°C (36°F) or above 54°C (130°F). DME/DME RNP-0.3 NA. When local altimeter setting not received, use Port Isabel altimeter setting: increase LPV DA to 277 feet; increase LNAV/VNAV DA to 327 feet; increase all MDAs 60 feet and visibility Cats C and D ¼ SM. For inoperative MALSR, increase LNAV/VNAV all Cats visibility to RVR 4000, LNAV all Cats visibility to RVR 5500. For inoperative MALSR, when using Port Isabel altimeter setting, increase LNAV/VNAV all Cats visibility to RVR 4500, LNAV Cats A and B visibility to RVR 5500 and Cats C and D visibility to 1¼ mile. Baro-VNAV NA with Port Isabel altimeter setting. VDP NA with Port Isabel altimeter setting. **RVR 1800 authorized with use of FD or AP or HUD to DA, NA when using Port Isabel altimeter setting.

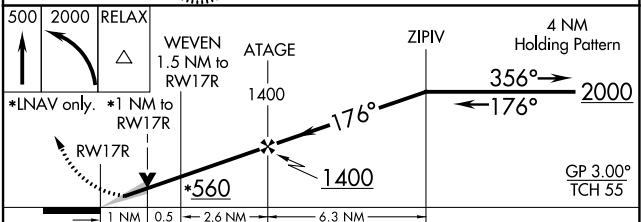
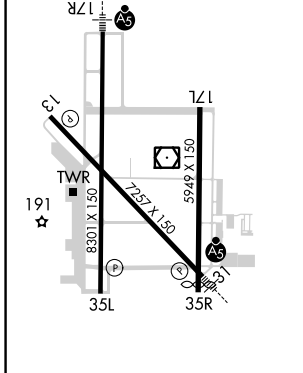
MALSR

MISSED APPROACH:
Climb to 500 then climbing left turn to 2000 direct RELAX and hold

ATIS 124.85	VALLEY APP CON 120.7 279.5	HARLINGEN TOWER* 119.3 (CTAF) 0 317.6	GND CON 121.7	UNICOM 122.95
-----------------------	--------------------------------------	---	-------------------------	-------------------------



ELEV 36	D	TDZE 35
----------------	----------	----------------



CATEGORY	A	B	C	D
LPV DA **		235/24	200 (200-½)	
LNAV/VNAV DA		285/24	250 (300-½)	
LNAV MDA	400/24	365 (400-½)	400/35	365 (400-¾)
C CIRCLING	500-1 464 (500-1)	560-1 524 (600-1)	680-1¾ 644 (700-1¾)	680-2 644 (700-2)

MIRL Rwy 17L-35R
REIL Rwy 13 and 17L
HIRL Rwy 13-31 and 17R-35L

SC-3, 22 FEB 2024 to 21 MAR 2024


SC-3, 22 FEB 2024 to 21 MAR 2024

WAAS CH 82530 W31A	APP CRS 311°	Rwy Idg 7257 TDZE 36 Apt Elev 36
--	------------------------	---

RNAV (GPS) Y RWY 31

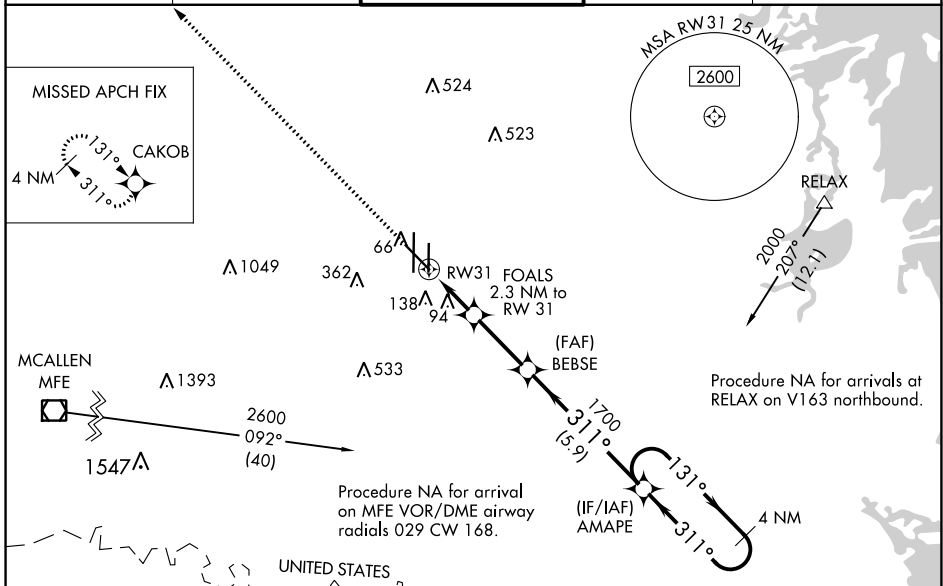
VALLEY INTL (HRL)

For uncompensated Baro-VNAV systems, LNAV/VNAV NA below 2°C (36°F) or above 54°C (130°F). DME/DME RNP-0.3 NA.

MALSRL


MISSED APPROACH: Climb to 2000 direct CAKOB and hold.

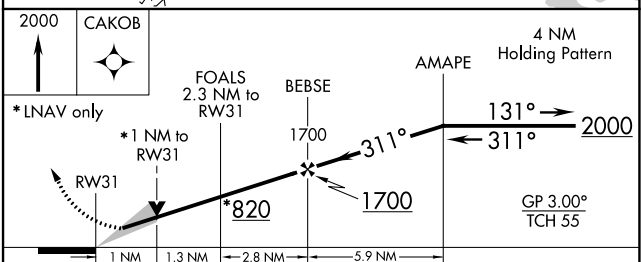
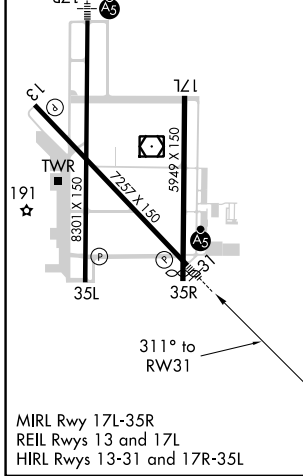
ATIS 124.85	VALLEY APP CON 120.7 279.5	HARLINGEN TOWER ★ 119.3 (CTAF) 317.6	GND CON 121.7	UNICOM 122.95
-----------------------	--------------------------------------	--	-------------------------	-------------------------



SC-3, 22 FEB 2024 to 21 MAR 2024

SC-3, 22 FEB 2024 to 21 MAR 2024

ELEV 36	D	TDZE 36
---------	----------	---------



CATEGORY	A	B	C	D
LPV DA	236-½ 200 (200-½)			
LNAV/VNAV DA	286-½ 250 (300-½)			
LNAV MDA	420-½ 384 (400-½)		420-⅝ 384 (400-⅝)	
C CIRCLING	500-1 464 (500-1)	560-1 524 (600-1)	680-1¾ 644 (700-1¾)	680-2 644 (700-2)

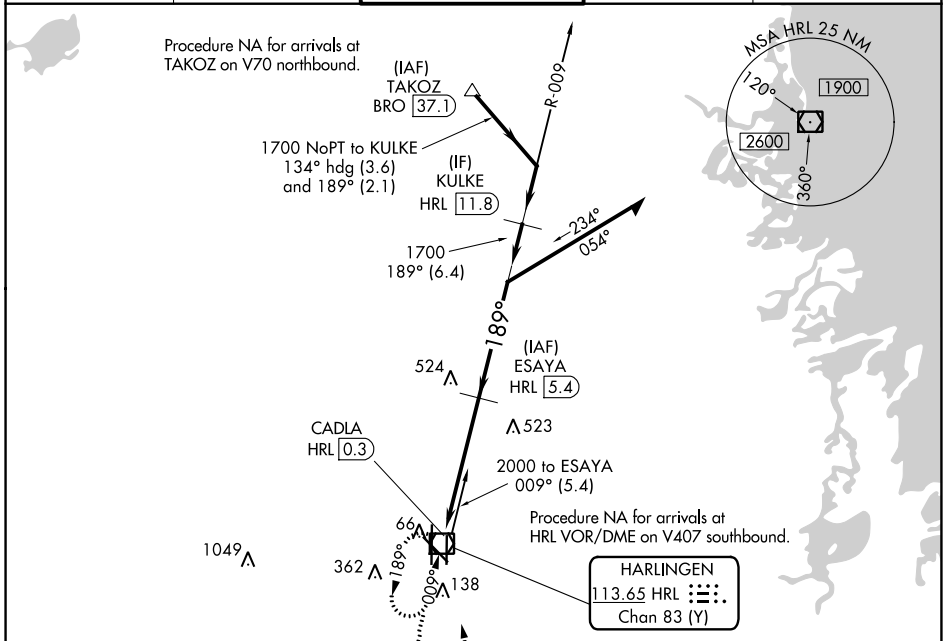
VOR/DME HRL	APP CRS	Rwy Idg	5949
113.65	189°	TDZE	36
Chan 83 (Y)		Apt Elev	36

VOR RWY 17L

VALLEY INTL (HRL)

DME required.		MISSED APPROACH: Climb to 2100 then left turn direct HRL VOR/DME and hold.		
---------------	--	--	--	--

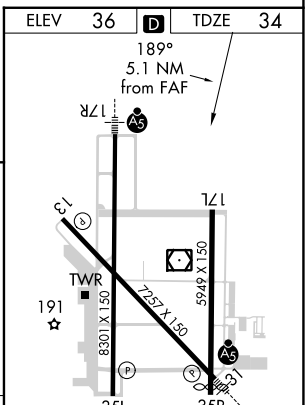
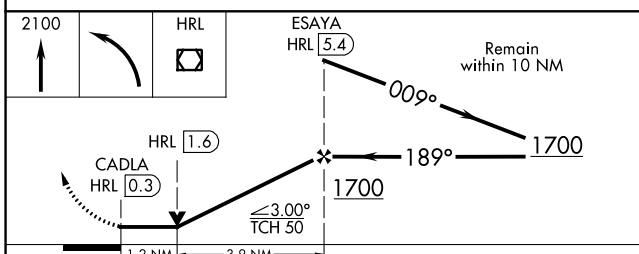
ATIS 124.85	VALLEY APP CON 120.7 279.5	HARLINGEN TOWER ★ 119.3 (CTAF) 0 317.6	GND CON 121.7	UNICOM 122.95
-----------------------	--------------------------------------	--	-------------------------	-------------------------



SC-3, 22 FEB 2024 to 21 MAR 2024

SC-3, 22 FEB 2024 to 21 MAR 2024

ELEV 36	D	TDZE 34
---------	---	---------



CATEGORY	A	B	C	D
S-17L	480-1	446 (500-1)	480-1 ³ / ₈	446 (500-1 ³ / ₈)
CIRCLING	500-1 464 (500-1)	560-1 524 (600-1)	680-1 ³ / ₄ 644 (700-1 ³ / ₄)	680-2 644 (700-2)

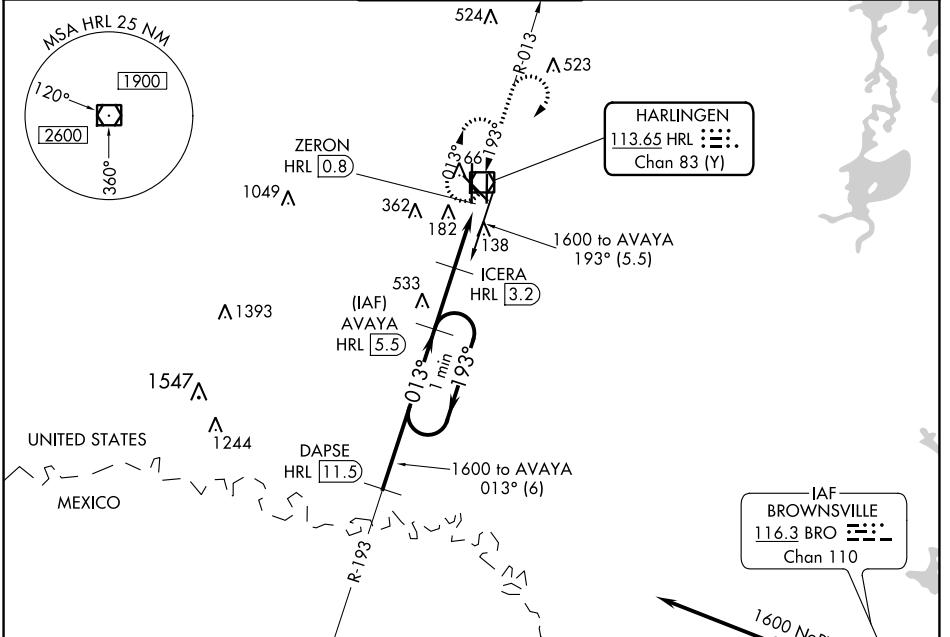
VOR/DME HRL 113.65 Chan 83 (Y)	APP CRS 013°	Rwy Idg TDZE Apt Elev	8301 36 36
--	------------------------	-----------------------------	---------------------------------------

VOR/DME RWY 35L

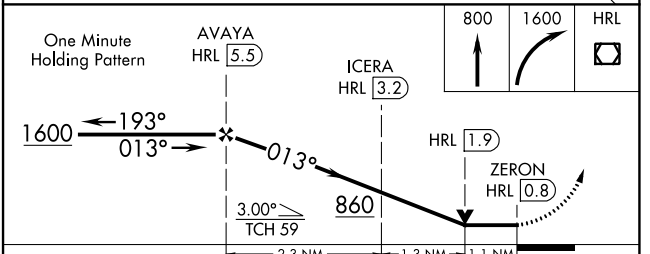
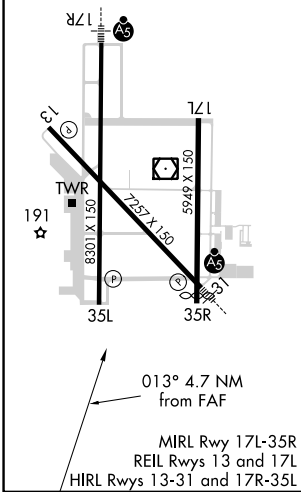
VALLEY INTL (H.R.L.)

MISSED APPROACH: Climb to 800 then climbing right turn to 1600 direct HRL VOR/DME and hold.

ATIS 124.85	VALLEY APP CON 120.7 279.5	HARLINGEN TOWER ★ 119.3 (CTAF) 317.6	GND CON 121.7	UNICOM 122.95
-----------------------	--------------------------------------	--	-------------------------	-------------------------



ELEV 36	D	TDZE 36
----------------	----------	----------------



CATEGORY	A	B	C	D
S-35L	440-1	404 (500-1)	440-1¼	404 (500-1¼)
<input checked="" type="checkbox"/> CIRCLING	500-1 464 (500-1)	560-1 524 (600-1)	680-1¾ 644 (700-1¾)	680-2 644 (700-2)

SC-3, 22 FEB 2024 to 21 MAR 2024

SC-3, 22 FEB 2024 to 21 MAR 2024

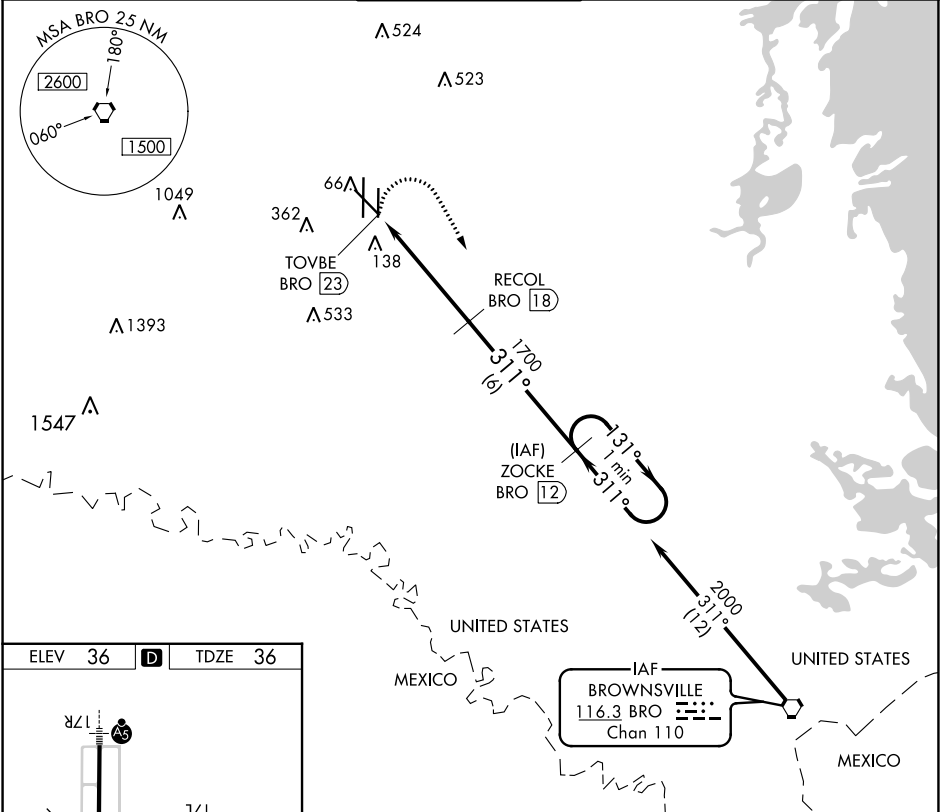
VORTAC BRO 116.3 Chan 110	APP CRS 311°	Rwy Idg TDZE Apt Elev	7257 36 36
---	------------------------	-----------------------------	---------------------------------------

VOR/DME Y or TACAN RWY 31

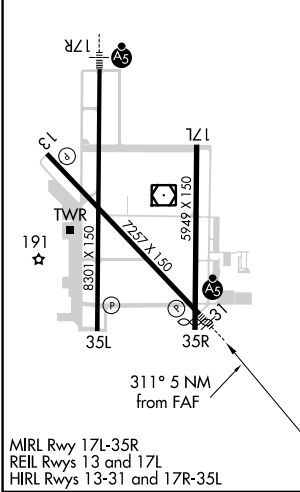
VALLEY INTL (HRL)

▽ When local altimeter setting not received, use Port Isabel altimeter setting and increase all MDA 60 feet.	MALS R 	MISSED APPROACH: Climbing right turn to 2000 via BRO R-311 to ZOCKE/12 DME and hold.
---	-------------------	---

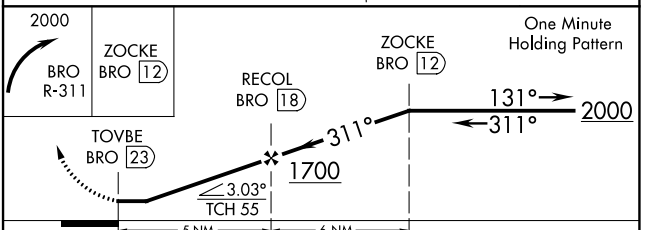
ATIS 124.85	VALLEY APP CON 120.7 279.5	HARLINGEN TOWER ★ 119.3 (CTAF) 317.6	GND CON 121.7	UNICOM 122.95
-----------------------	--------------------------------------	--	-------------------------	-------------------------



ELEV 36	D	TDZE 36
---------	----------	---------



MIRL Rwy 17L-35R
REIL Rwy 13 and 17L
HIRL Rwy 13-31 and 17R-35L



CATEGORY	A	B	C	D
S-31	1000-1¼ 964 (1000-1¼)	1000-1½ 964 (1000-1½)	1000-3	964 (1000-3)
C CIRCLING	1000-1¼ 964 (1000-1¼)	1000-1½ 964 (1000-1½)	1000-3	964 (1000-3)

VOR/DME Y or TACAN RWY 31

SC-3, 22 FEB 2024 to 21 MAR 2024

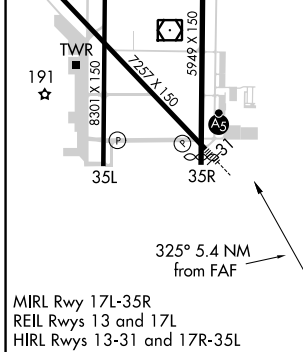
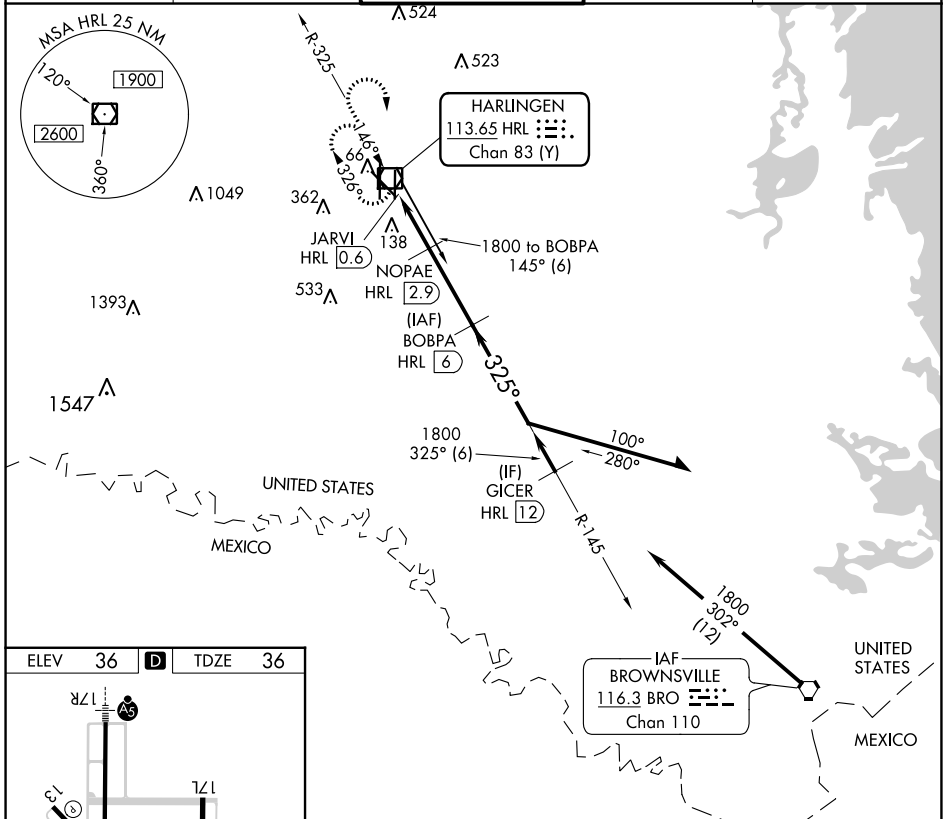
SC-3, 22 FEB 2024 to 21 MAR 2024

VOR/DME HRL 113.65 Chan 83 (Y)	APP CRS 325°	Rwy Idg TDZE Apt Elev 7257 36 36
--	------------------------	--

VOR Z RWY 31

VALLEY INTL (H.R.L.)

DME required.		MALSR	MISSED APPROACH: Climb to 1000 then climbing right turn to 2000 direct HRL VOR/DME and hold.	
ATIS 124.85	VALLEY APP CON 120.7 279.5	HARLINGEN TOWER ★ 119.3 (CTAF) 317.6	GND CON 121.7	UNICOM 122.95



1000	2000	HRL	BOBPA HRL 6	Remain within 10 NM
		JARVI HRL 0.6	NOPAE HRL 2.9	
		HRL 1.7		
		800	1800	145°
		325°	325°	1800
		1 NM	1.2 NM	3.1 NM
CATEGORY	A	B	C	D
S-31	420-1/2	384 (400-1/2)	420-3/4	384 (400-3/4)
C CIRCLING	500-1 464 (500-1)	560-1 524 (600-1)	680-1 3/4 644 (700-1 3/4)	680-2 644 (700-2)

SC-3, 22 FEB 2024 to 21 MAR 2024

SC-3, 22 FEB 2024 to 21 MAR 2024