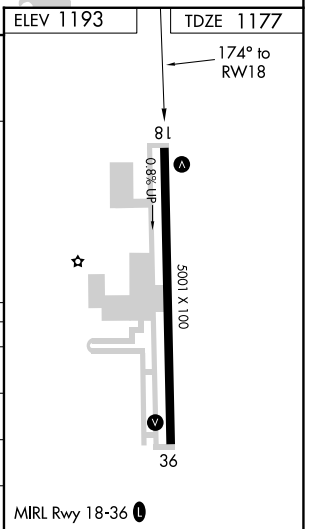
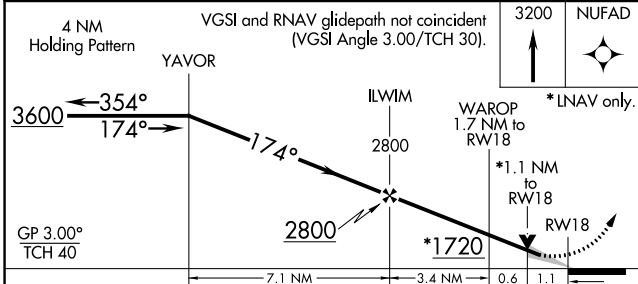
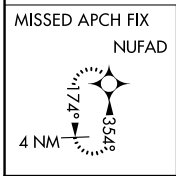
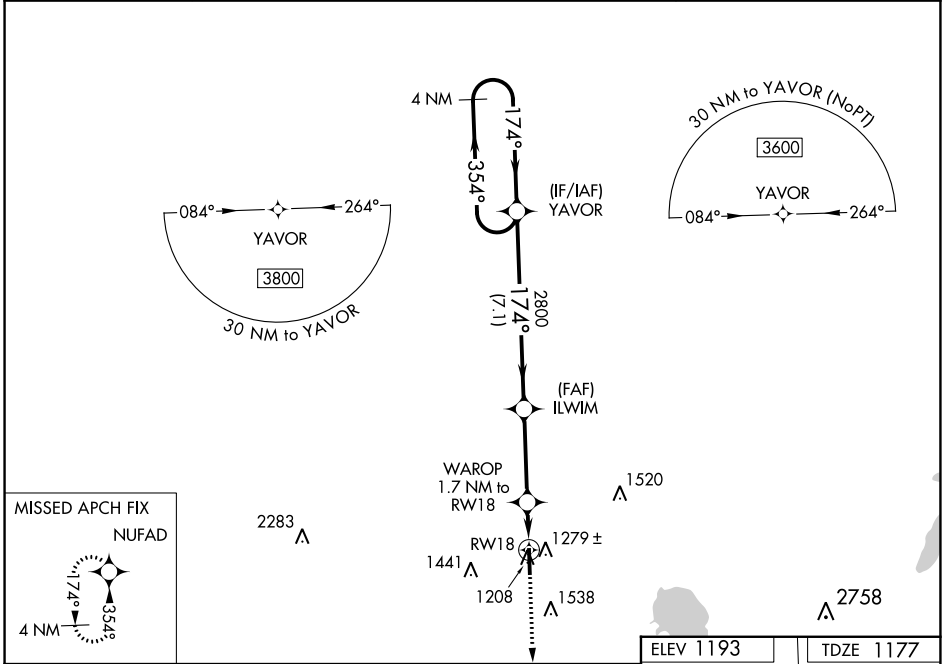


WAAS CH 81923 W18A	APP CRS 174°	Rwy Idg 5001 TDZE 1177 Apt Elev 1193
--	------------------------	---

RNAV (GPS) RWY 18

SUNDANCE (HSD)

<p>⚠ For uncompensated Baro-VNAV systems, LNAV/VNAV NA below -17°C (2°F) or above 54°C (130°F). Baro-VNAV and VDP NA when using Wiley Post altimeter setting. DME/DME RNP-0.3 NA. Circling Rwy 36 NA at night.</p>			<p>MISSED APPROACH: Climb to 3200 direct NUFAD and hold.</p>
AWOS-3 120.975	OKE CITY APP CON 124.6 266.8	CLNC DEL 123.7	UNICOM 122.7 (CTAF) 0



CATEGORY	A	B	C	D
LPV DA	1427-1	250 (300-1)		NA
LNAV/VNAV DA	1473-1½	296 (300-1½)		NA
LNAV MDA	1540-1	363 (400-1)	1540-1½ 363 (400-1½)	NA
CIRCLING	1740-1 547 (600-1)	1840-1 647 (700-1)	1840-1¾ 647 (700-1¾)	NA

SC-1, 22 FEB 2024 to 21 MAR 2024

SC-1, 22 FEB 2024 to 21 MAR 2024

APP CRS 354°	Rwy Idg TDZE Apt Elev	5001 1193 1193
------------------------	-----------------------------	---

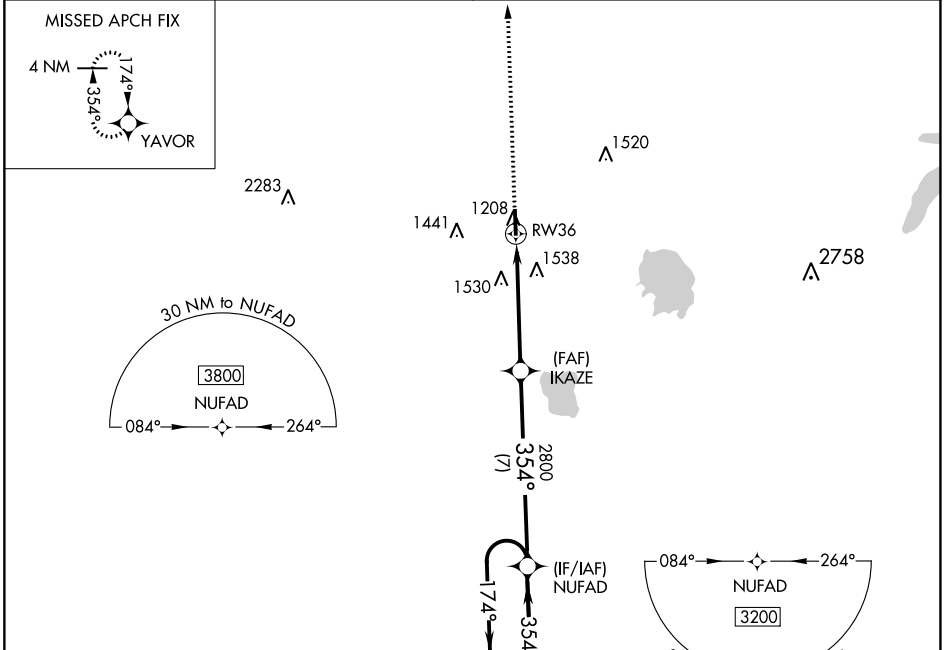
RNAV (GPS) RWY 36

SUNDANCE (HSD)

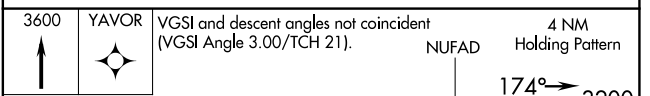
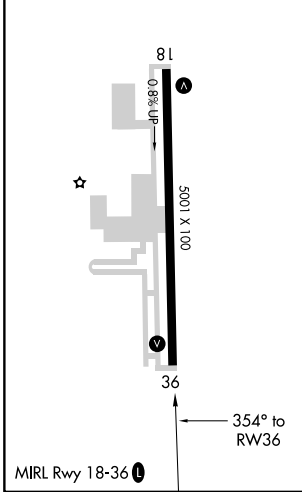
⚠ Rwy 36 helicopter visibility reduction below 1 SM NA. DME/DME RNP-0.3 NA.
⚠ Straight-in Rwy 36 NA at night, Circling Rwy 36 NA at night.

MISSED APPROACH: Climb to 3600 direct YAVOR and hold.

AWOS-3 120.975	OKE CITY APP CON 124.6 266.8	CLNC DEL 123.7	UNICOM 122.7 (CTAF) 📞
--------------------------	--	--------------------------	--



ELEV 1193	TDZE 1193
-----------	-----------



CATEGORY	A	B	C	D
LNAV MDA	1780-1	587 (600-1)	1780-1 $\frac{3}{4}$ 587 (600-1 $\frac{3}{4}$)	NA
CIRCLING	1780-1 587 (600-1)	1840-1 647 (700-1)	1840-1 $\frac{3}{4}$ 647 (700-1 $\frac{3}{4}$)	NA

SC-1, 22 FEB 2024 to 21 MAR 2024

SC-1, 22 FEB 2024 to 21 MAR 2024

VORTAC IRW 114.1 Chan 88	APP CRS 155°	Rwy Idg 5001 TDZE 1177 Apt Elev 1193
--	------------------------	---

VOR RWY 18

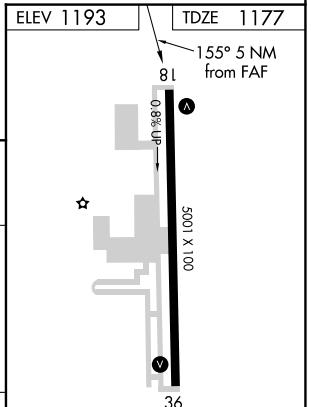
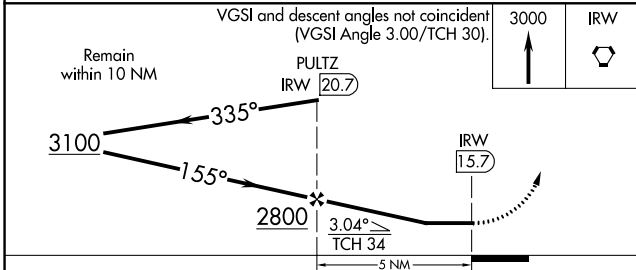
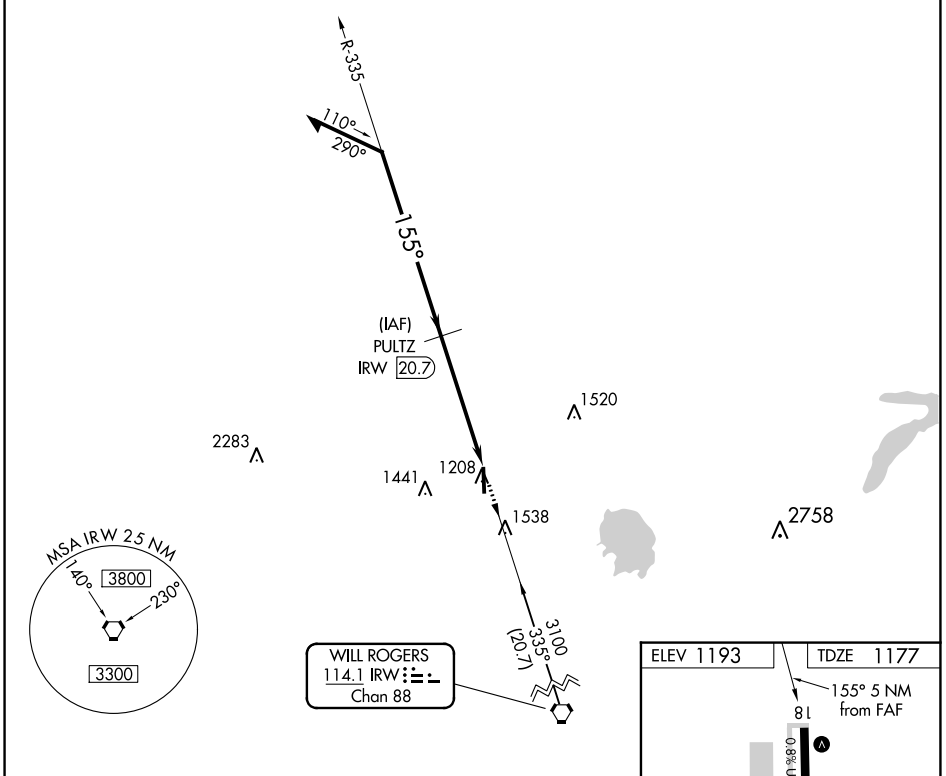
SUNDANCE (HSD)

DME required.

⚠ Circling Rwy 36 NA at night.

MISSED APPROACH: Climb to 3000 direct IRW VORTAC.

AWOS-3 120.975	OKE CITY APP CON 124.6 266.8	CLNC DEL 123.7	UNICOM 122.7 (CTAF) 1
--------------------------	--	--------------------------	--



CATEGORY	A	B	C	D
S-18	1700-1	523 (600-1)	1700-1½ 523 (600-1½)	NA
CIRCLING	1740-1 547 (600-1)	1840-1 647 (700-1)	1840-1¾ 647 (700-1¾)	NA

MIRL Rwy 18-36 **1**

SC-1, 22 FEB 2024 to 21 MAR 2024

SC-1, 22 FEB 2024 to 21 MAR 2024