

RNAV 1-GPS.

RADAR required.

MIAMI APP CON
 119.45 290.325
 FLL D-ATIS
 135.0
 FXE ATIS
 119.85
 HWO ATIS
 135.475
 OPF ATIS
 125.9
 PMP ATIS
 120.55

NOTE: Turboprop and prop aircraft only.
 NOTE: Do not file - to be assigned by ATC.

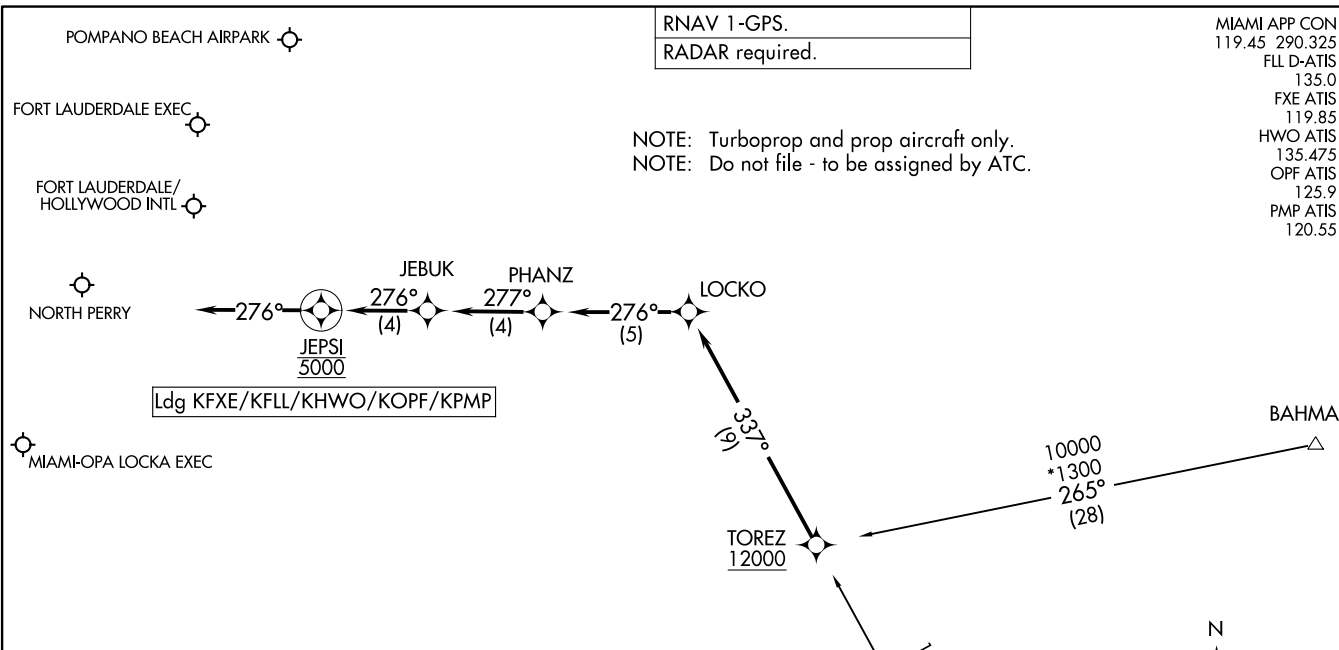
TOREZ ONE ARRIVAL (RNAV)
(TOREZ.TOREZ1) 15JUN23

(TOREZ.TOREZ1) 23166
TOREZ ONE ARRIVAL (RNAV)

AL-256 (FAA)

MIAMI, FLORIDA

MIAMI, FLORIDA



Ldg KFXXE/KFLL/KHWO/KOPF/KPMP

ARRIVAL ROUTE DESCRIPTION

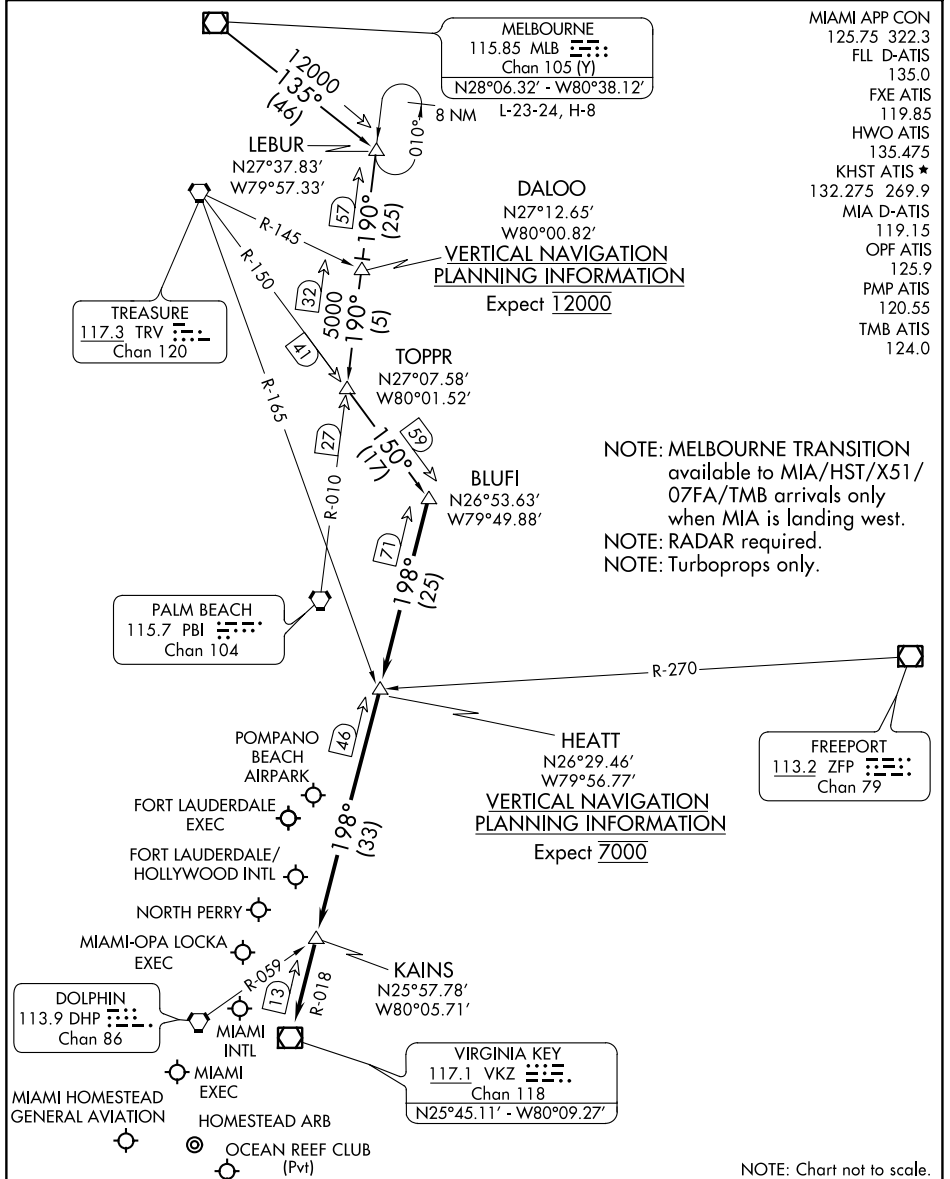
BAHMA TRANSITION (BAHMA.TOREZ1)
MKERS TRANSITION (MKERS.TOREZ1)

LANDING ALL AIRPORTS: From TOREZ on track 337° to LOCKO, then on track 276° to PHANZ, then on track 277° to JEBUK, then on track 276° to cross JEPSI at 5000, then on track 276°. Expect RADAR vectors to final approach course.

NOTE: Chart not to scale.

BLUF1 FOUR ARRIVAL

FORT LAUDERDALE, FLORIDA



- MIAMI APP CON 125.75 322.3
- FLL D-ATIS 135.0
- FXE ATIS 119.85
- HWO ATIS 135.475
- KHST ATIS ★ 132.275 269.9
- MIA D-ATIS 119.15
- OPF ATIS 125.9
- PMP ATIS 120.55
- TMB ATIS 124.0

NOTE: MELBOURNE TRANSITION available to MIA/HST/X51/07FA/TMB arrivals only when MIA is landing west.
 NOTE: RADAR required.
 NOTE: Turboprops only.

VERTICAL NAVIGATION PLANNING INFORMATION
 Expect 7000

MELBOURNE
 115.85 MLB
 Chan 105 (Y)
 N28°06.32' - W80°38.12'
 L-23-24, H-8

DALOO
 N27°12.65'
 W80°00.82'
 VERTICAL NAVIGATION PLANNING INFORMATION
 Expect 2000

TOPPR
 N27°07.58'
 W80°01.52'

BLUFI
 N26°53.63'
 W79°49.88'

HEATT
 N26°29.46'
 W79°56.77'
 VERTICAL NAVIGATION PLANNING INFORMATION
 Expect 7000

KAINS
 N25°57.78'
 W80°05.71'

VIRGINIA KEY
 117.1 VKZ
 Chan 118
 N25°45.11' - W80°09.27'

NOTE: Chart not to scale.

MELBOURNE TRANSITION (MLB.BLUF14): From over MLB VOR/DME on MLB R-135 to LEBUR INT/MLB 46 DME, then on PBI R-010 to TOPPR INT/PBI 30 DME, then on TRV R-150 to BLUFI INT. Thence . . .
 . . . from over BLUFI INT/VKZ 71 DME on VKZ R-018 to HEATT INT/VKZ 46 DME, then on VKZ R-018 to KAINS INT, then on VKZ R-018 to VKZ VOR/DME. Expect RADAR vectors to final approach course after KAINS INT.

BLUF1 FOUR ARRIVAL

(BLUF1.BLUF14) 22JUN17

FORT LAUDERDALE, FLORIDA

SE-3, 22 FEB 2024 to 21 MAR 2024

SE-3, 22 FEB 2024 to 21 MAR 2024

DEKAL EIGHT ARRIVAL
 (DEKAL.DEKAL8) 03NOV22

(DEKAL.DEKAL8) 22307
 DEKAL EIGHT ARRIVAL

AL-744 (FAA)

FORT LAUDERDALE, FLORIDA

MIAMI APP CON
 119.45 290.325
 FLL D-ATIS
 135.0
 FXE ATIS
 119.85
 HWO ATIS
 135.475
 OPF ATIS
 125.9
 PMP ATIS
 120.55

FORT LAUDERDALE
 114.4 FLL
 Chan 91
 N26°04.44'-W80°09.99'

POMPANO BEACH AIRPARK
 FORT LAUDERDALE EXEC

Ldg KFXXE, KFLI, KOPF, KHWO, KPMP

FORT LAUDERDALE/HOLLYWOOD INTL

MIAMI-OPA LOCKA EXEC

NORTH PERRY

NOTE: RADAR required.
 NOTE: DME required.

BIMINI
 116.7 ZBV
 Chan 114
 N25°42.25'-W79°17.67'

FREEPORT
 113.2 ZFP
 Chan 79
 N26°33.32'-W78°41.87'
 L-23, H-8

NASSAU
 112.7 ZQA
 Chan 74
 N25°01.53'-W77°26.79'
 L-23, H-8

BORDO
 N24°00.00'
 W78°27.53'
 H-8



ARRIVAL ROUTE DESCRIPTION

BORDO TRANSITION (BORDO.DEKAL8): From over BORDO on ZBV R-160 to ZBV VORTAC, then on ZBV R-300 to DEKAL. Thence. . . .

FREEPORT TRANSITION (ZFP.DEKAL8): From over ZFP VOR/DME on ZFP R-215 and ZBV R-036 to ZBV VORTAC, then on ZBV R-300 to DEKAL. Thence. . . .

NASSAU TRANSITION (ZQA.DEKAL8): From over ZQA VOR/DME on ZQA R-298 to RAJAY, then on ZBV R-116 to ZBV VORTAC, then on ZBV R-300 to DEKAL. Thence. . . .

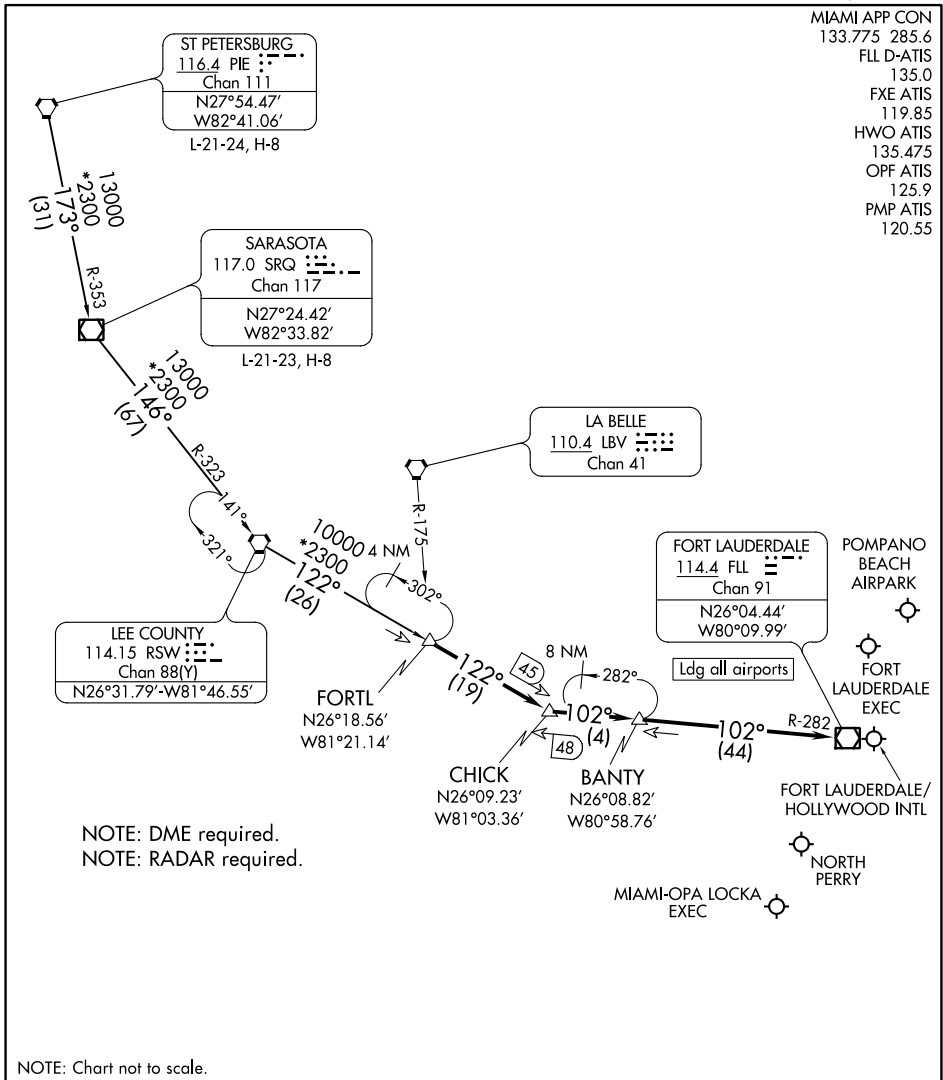
LANDING ALL AIRPORTS: From DEKAL on FORT LAUDERDALE VOR/DME (FLL) R-121 to FLL VOR/DME. Expect RADAR vectors to final approach course.

FORT LAUDERDALE, FLORIDA

NOTE: Chart not to scale.

FORTL NINE ARRIVAL

FORT LAUDERDALE, FLORIDA



SE-3, 22 FEB 2024 to 21 MAR 2024

SE-3, 22 FEB 2024 to 21 MAR 2024

NOTE: Chart not to scale.

ARRIVAL ROUTE DESCRIPTION

ST PETERSBURG TRANSITION (PIE.FORTL9): From over PIE VORTAC on PIE R-173 and SRQ R-353 to SRQ VOR/DME, then on SRQ R-146 and RSW R-323 to RSW VORTAC, then on RSW R-122 to FORTL. Thence. . .

SARASOTA TRANSITION (SRQ.FORTL9): From over SRQ VOR/DME on SRQ R-146 and RSW R-323 to RSW VORTAC, then on RSW R-122 to FORTL. Thence. . .

LANDING ALL AIRPORTS: From FORTL on RSW R-122 to CHICK, then on FORT LAUDERDALE VOR/DME (FLL) R-282 to FLL VOR/DME. Expect RADAR vectors to final approach course.

FORTL NINE ARRIVAL

FORT LAUDERDALE, FLORIDA

MIAMI APP CON
128.6 306.975
FLL D-ATIS
135.0
FXE ATIS
119.85
HWO ATIS
135.475
OPF ATIS
125.9
PMP ATIS
120.55

(KYAKS.KYAKS3) 22307

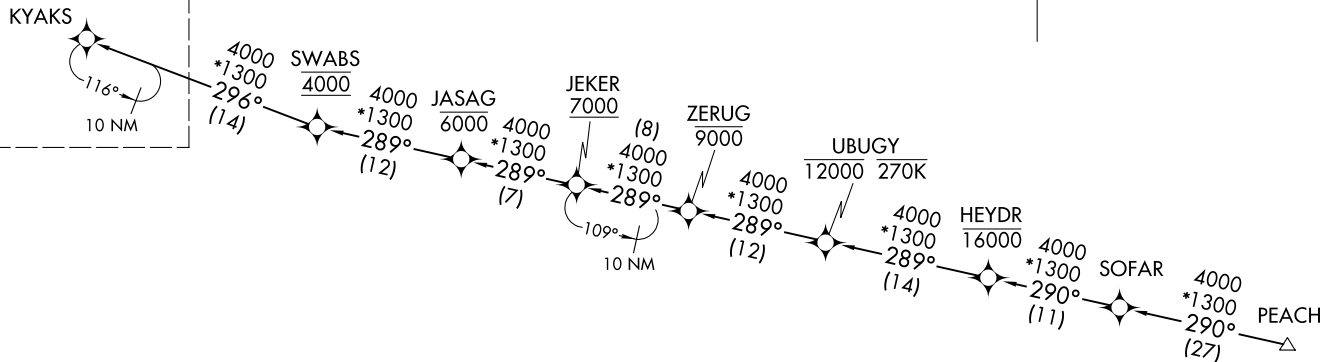
AL-744 (FAA)

FORT LAUDERDALE, FLORIDA



NOTE: Turboprop and prop aircraft only.
NOTE: Do not file JEKER Transition - to be assigned by ATC.

See following page
for arrival routes.



RNAV 1-GPS.
RADAR required.

JEKER TRANSITION (JEKER.KYAKS3)
PEACH TRANSITION (PEACH.KYAKS3)
SOFAR TRANSITION (SOFAR.KYAKS3)

(NARRATIVE ON FOLLOWING PAGE)
(CONTINUED ON FOLLOWING PAGE)

NOTE: Chart not to scale.

KYAKS THREE ARRIVAL (RNAV) Transition Routes
(KYAKS.KYAKS3) 03NOV22

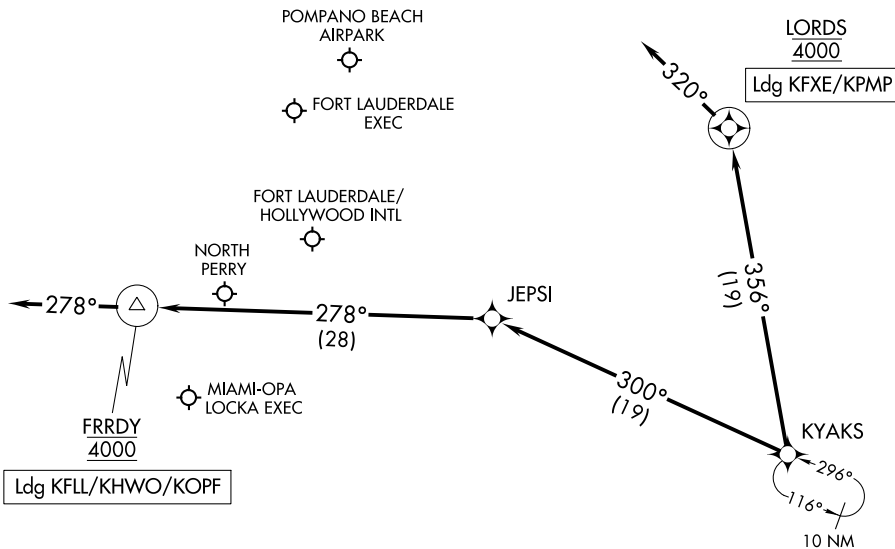
FORT LAUDERDALE, FLORIDA

KYAKS THREE ARRIVAL (RNAV) Arrival Routes

FORT LAUDERDALE, FLORIDA

RNAV 1-GPS.
RADAR required.

MIAMI APP CON
128.6 306.975
FLL D-ATIS
135.0
FXE ATIS
119.85
HWO ATIS
135.475
OPF ATIS
125.9
PMP ATIS
120.55



NOTE: Turboprop and prop aircraft only.

NOTE: Chart not to scale.

ARRIVAL ROUTE DESCRIPTION

LANDING KFL/KHWO/KOPF: From KYAKS on track 300° to JEPSI, then on track 278° to cross FRRDY at 4000, then on track 278°. Expect RADAR vectors to final approach course.

LANDING KFXE/KPMP: From KYAKS on track 356° to cross LORDS at 4000, then on heading 320°. Expect RADAR vectors to final approach course.

(TARPN.TARPN3) 22139

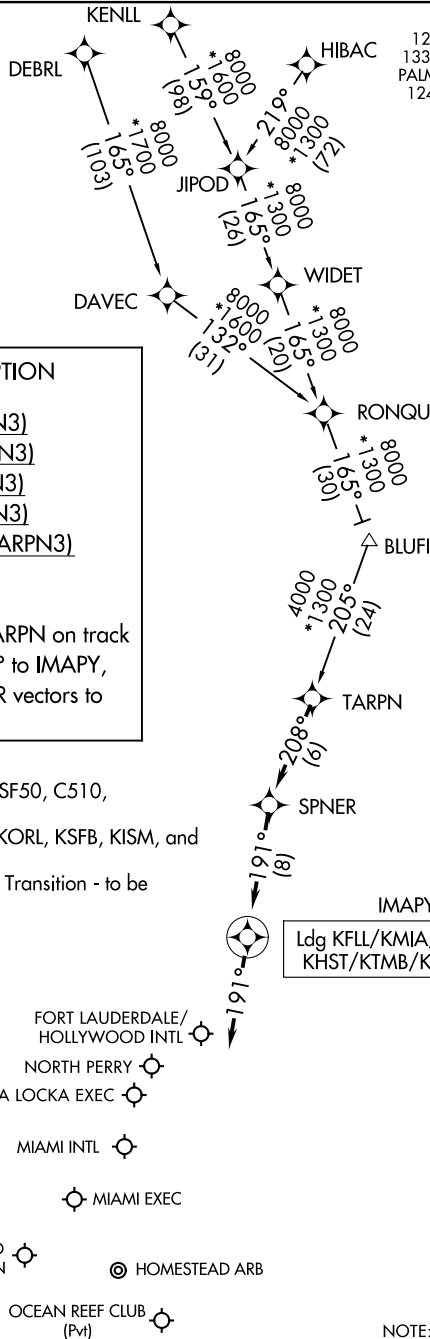
TARPN THREE ARRIVAL (RNAV)

AL-744 (FAA)

FORT LAUDERDALE, FLORIDA

RNAV 1 - DME/DME/IRU or GPS.
RADAR required.

MIAMI APP CON 126.05 251.1 (9000)
 133.775 371.9 (7000)
 PALM BEACH APP CON 124.6 317.4 (12000)
 FLL D-ATIS 135.0
 HWO ATIS 135.475
 KHST ATIS * 132.275 269.9
 MIA D-ATIS 119.15
 OPF ATIS 125.9
 TMB ATIS 124.0
 X51 AWOS-3 118.375



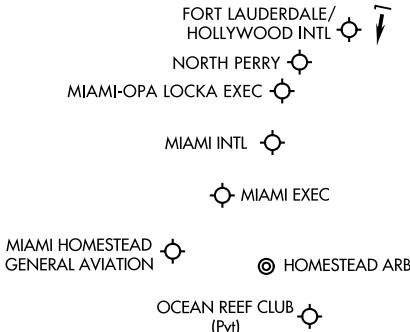
ARRIVAL ROUTE DESCRIPTION

- DEBRL TRANSITION (DEBRL.TARPN3)
- HIBAC TRANSITION (HIBAC.TARPN3)
- JIPOD TRANSITION (JIPOD.TARPN3)
- KENLL TRANSITION (KENLL.TARPN3)
- RONQU TRANSITION (RONQU.TARPN3)

LANDING ALL AIRPORTS: From TARPN on track 208° to SPNER, then on track 191° to IMAPY, then on track 191°. Expect RADAR vectors to final approach course.

- NOTE: Turboprop and EA50, E50P, SF50, C510, and C525 aircraft only.
- NOTE: JIPOD Transition for KMCO, KORL, KSFB, KISM, and KLEE departures only.
- NOTE: Do not file DEBRL or RONQU Transition - to be assigned by ATC.

Ldg KFLL/KMIA/O7FA/X51/KHST/KTMB/KHWO/KOPF



NOTE: Chart not to scale.

TARPN THREE ARRIVAL (RNAV)

(TARPN.TARPN3) 19MAY22

FORT LAUDERDALE, FLORIDA

SE-3, 22 FEB 2024 to 21 MAR 2024

SE-3, 22 FEB 2024 to 21 MAR 2024