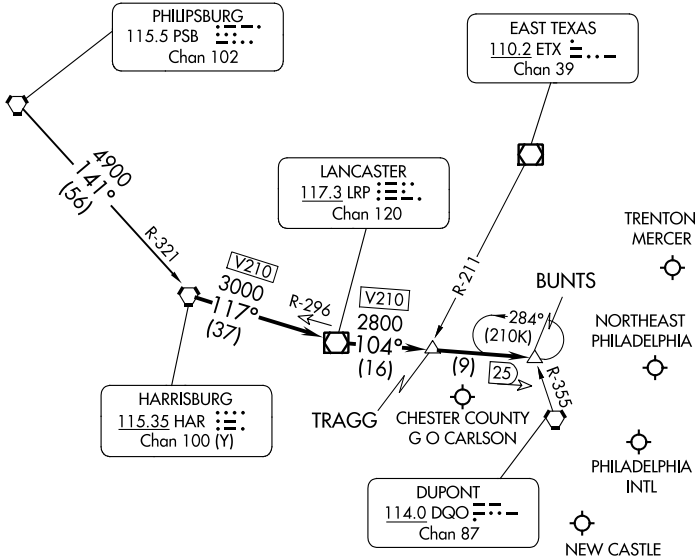


BUNTS THREE ARRIVAL

PHILADELPHIA, PENNSYLVANIA

PHILADELPHIA APP CON
 128.4 272.575
 ILG ATIS 123.95
 PHL ARR D-ATIS 133.4
 PNE ATIS 121.15
 TTN ATIS 126.775



NOTE: Expect to cross BUNTS at 8000.
 NOTE: This STAR is for aircraft capable of 250K or greater.

NOTE: Chart not to scale.

ARRIVAL ROUTE DESCRIPTION

PHILIPSBURG TRANSITION (PSB.BUNTS3):

From over HAR VORTAC on HAR R-117 (V210) and LRP R-296 to LRP VOR/DME, thence on LRP R-104 (V210) to BUNTS. Expect RADAR vectors to final approach course.

BUNTS THREE ARRIVAL

(HAR.BUNTS3) 05OCT23

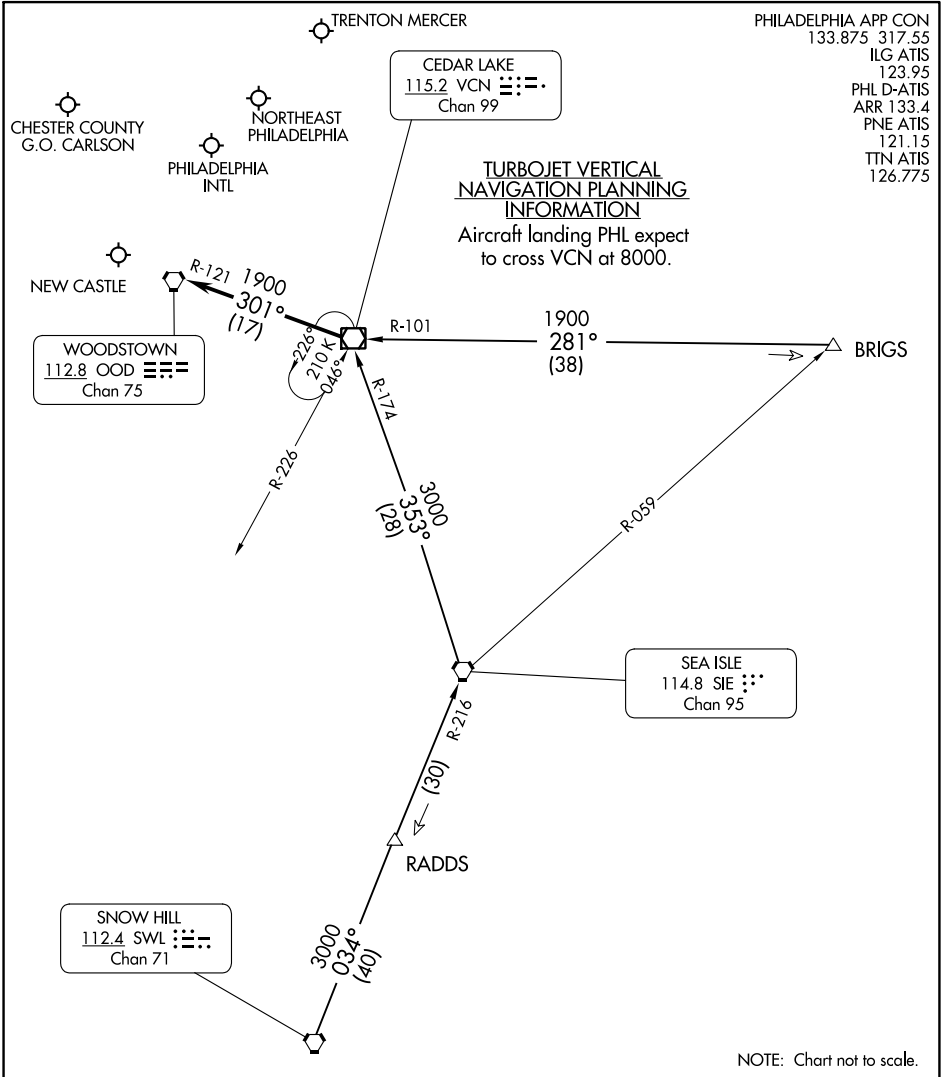
PHILADELPHIA, PENNSYLVANIA

NE-4, 22 FEB 2024 to 21 MAR 2024

NE-4, 22 FEB 2024 to 21 MAR 2024

CEDAR LAKE NINE ARRIVAL

PHILADELPHIA, PENNSYLVANIA



NE-4, 22 FEB 2024 to 21 MAR 2024

NE-4, 22 FEB 2024 to 21 MAR 2024

BRIGS TRANSITION (BRIGS.VCN9): From over BRIGS on VCN R-101 to VCN VOR/DME. Thence. . .

SNOW HILL TRANSITION (SWL.VCN9): From over SWL VORTAC on SWL R-034 and SIE R-216 to SIE VORTAC, then on SIE R-353 and VCN R-174 to VCN VOR/DME. Thence. . .

. . . from over VCN VOR/DME: Turbojets expect RADAR vectors to final approach course. Non-Turbojets continue on the VCN R-301 and the OOD R-121 to OOD VORTAC; expect RADAR vectors to final approach course.

CEDAR LAKE NINE ARRIVAL

PHILADELPHIA, PENNSYLVANIA

JIIIMS.JIIMS4) 20APR23

JIIIMS FOUR ARRIVAL (RNAV)

PHILADELPHIA APP CON
133.875 317.55
MQS AWOS-3 126.25
ILG ATIS 123.95
PHI D-ATIS ARR 133.4
PNE ATIS 121.15
TTN ATIS 126.775

RNAV 1 - DME/DME/IRU or GPS
RADAR required

CHESTER COUNTY
G O CARLSON

NOTE: USE CAUTION: Parachute
jumping 2.7 NM SE CHPMN,
1.5 NM radius of Cross Keys
Airport, AOB 13500 (SR-SS).

NOTE: Jet aircraft only.

ARRIVAL ROUTE DESCRIPTION

- BRIGS TRANSITION (BRIGS.JIIMS4):
- DASHA TRANSITION (DASHA.JIIMS4):
- ZJAAY TRANSITION (ZJAAY.JIIMS4):

Landing PHL Rwy 9L/R: From JIIIMS on track 290° to WUDRR, then on track 307° to WEVVE, then on track 268° to ERNYY, then on track 268°. Expect RADAR vectors to final approach course.

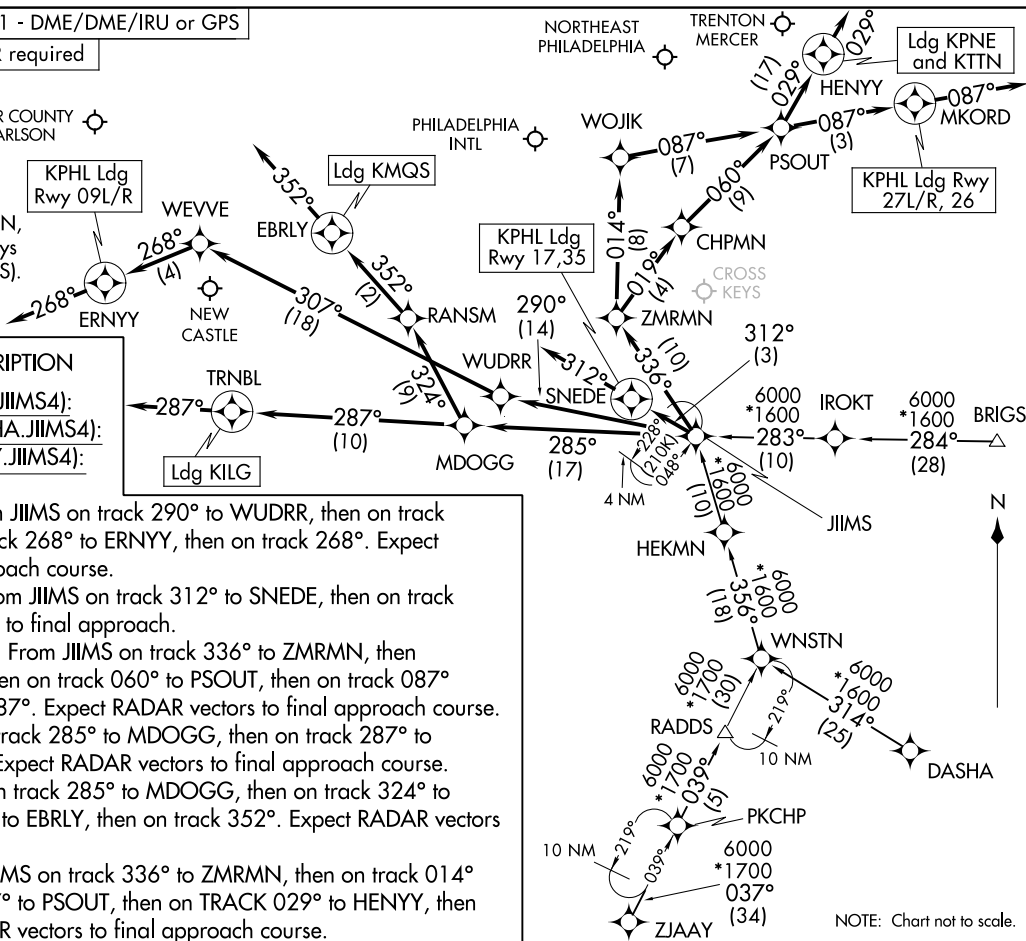
Landing PHL Rwy 17, 35: From JIIIMS on track 312° to SNEDE, then on track 312°. Expect RADAR vectors to final approach.

Landing PHL Rwy 26, 27L/R: From JIIIMS on track 336° to ZMRMN, then on track 019° to CHPMN, then on track 060° to PSOUT, then on track 087° to MKORD, then on track 087°. Expect RADAR vectors to final approach course.

Landing ILG: From JIIIMS on track 285° to MDOGG, then on track 287° to TRNBL, then on track 287°. Expect RADAR vectors to final approach course.

Landing MQS: From JIIIMS on track 285° to MDOGG, then on track 324° to RANSM, then on track 352° to EBRLY, then on track 352°. Expect RADAR vectors to final approach course.

Landing TTN/KPNE: From JIIIMS on track 336° to ZMRMN, then on track 014° to WOJIK, then on track 087° to PSOUT, then on TRACK 029° to HENYY, then on track 029°. Expect RADAR vectors to final approach course.



JIIIMS.JIIMS4) 23110

JIIIMS FOUR ARRIVAL (RNAV)

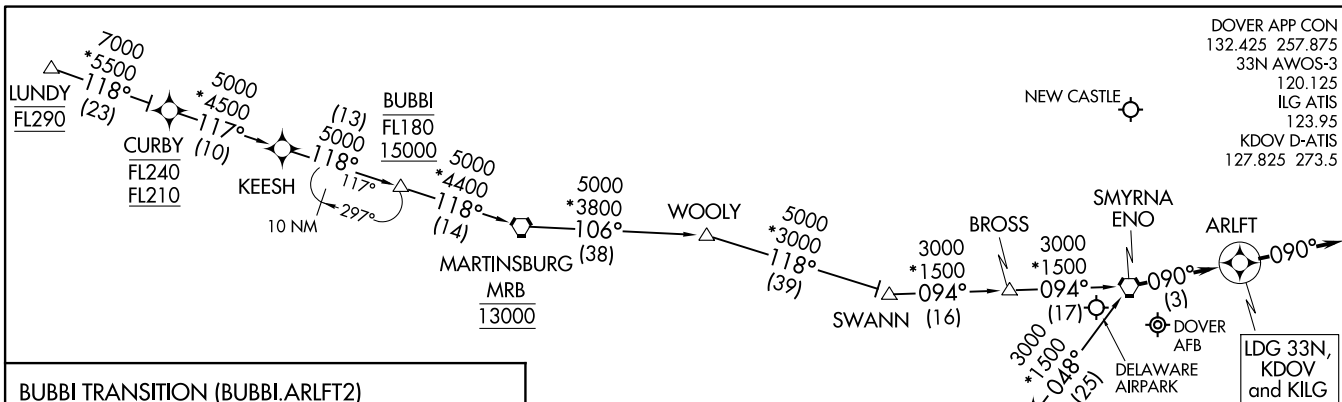
AL-320 (FAA)

PHILADELPHIA, PENNSYLVANIA

PHILADELPHIA, PENNSYLVANIA

(ENO.ARLFT2) 12AUG21

ARLFT TWO ARRIVAL (RNAV)



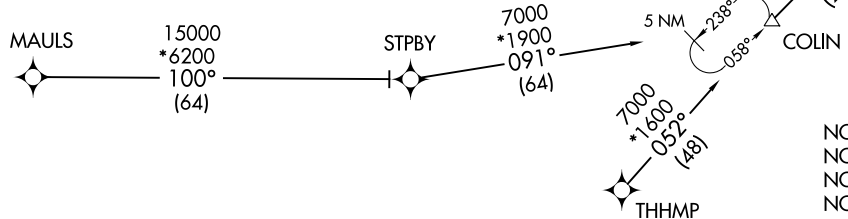
DOVER APP CON
132.425 257.875
33N AWOS-3
120.125
ILG ATIS
123.95
KDOV D-ATIS
127.825 273.5

LDG 33N,
KDOV
and KILG

- BUBBI TRANSITION (BUBBI.ARLFT2)
- LUNDY TRANSITION (LUNDY.ARLFT2)
- MAULS TRANSITION (MAULS.ARLFT2)
- THHMP TRANSITION (THHMP.ARLFT2)

LANDING KDOV/33N/KILG: From ENO VORTAC on track 090° to ARLFT, then on heading 090° or as assigned by ATC. Expect RADAR vectors to final approach course.

- NOTE: RADAR required
- NOTE: RNAV 1
- NOTE: DME/DME/IRU or GPS required
- NOTE: LUNDY Transition for KDOV and 33N arrivals only
- NOTE: BUBBI Transition ATC assigned only



NOTE: Chart not to scale.

DOVER/CHESWOLD, DELAWARE

ARLFT TWO ARRIVAL (RNAV)

(ENO.ARLFT2) 23222

AL-562 (FAA)

DOVER/CHESWOLD, DELAWARE