


LOC I-GMX <b>111.55</b>	APP CRS <b>238°</b>	Rwy Idg <b>8016</b> TDZE <b>26</b> Apt Elev <b>32</b>
----------------------------	------------------------	---

# ILS Y RWY 24 (SA CAT I & II)

WILMINGTON INTL (ILM)

**⚠** ADF required. SA CAT I: Requires specific OPSPEC, MSPEC, or LOA approval and use of HUD to DH. SA CAT II: Reduced lighting: requires specific OPSPEC, MSPEC, or LOA approval and use of autoland or HUD to touchdown. Procedure NA when tower closed.

**MALS** 

**MISSED APPROACH:** Climb to 500 then climbing right turn to 1800 direct WILZE LOM and hold.

ATIS <b>124.975</b>	WILMINGTON APP CON ★ <b>118.25 284.65</b> (164°-343°) <b>135.75 317.425</b> (344°-163°)	WILMINGTON TOWER ★ <b>119.9</b> (CTAF) <b>239.3</b>	GND CON <b>121.9 348.6</b>	UNICOM <b>122.95</b>
------------------------	---	--	-------------------------------	-------------------------

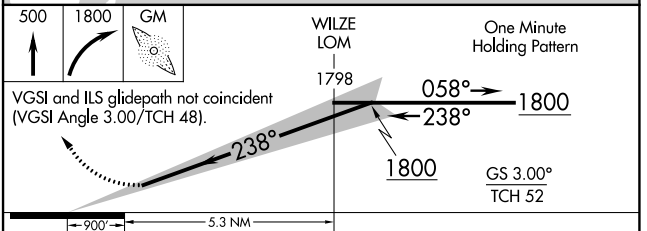
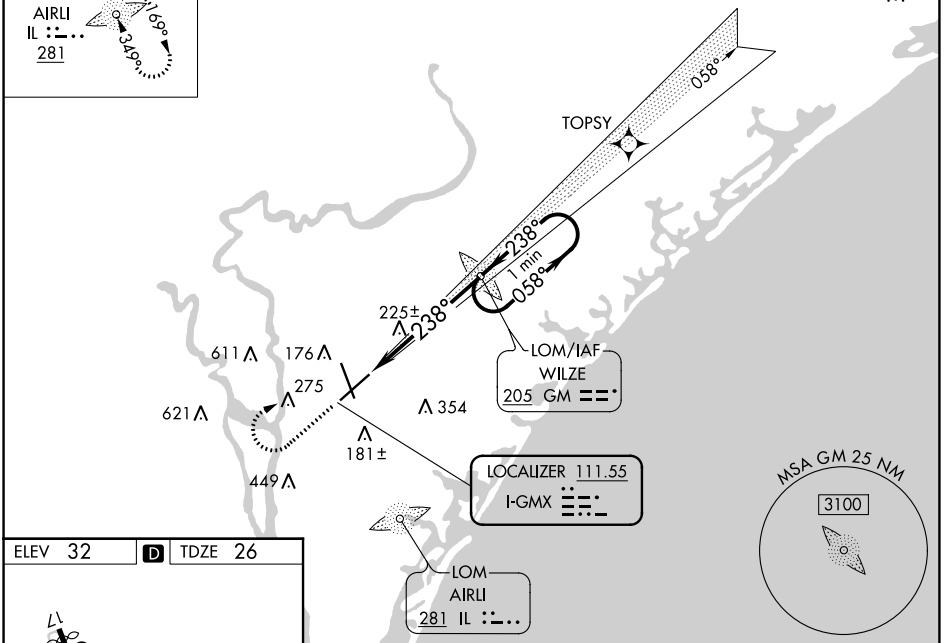
ALTERNATE MISSED APCH FIX

AIRLI  
IL : - . .  
**281**



## RNAV 1-GPS or RADAR REQUIRED

1042 **△**



CATEGORY	A	B	C	D
S-ILS 24		SA CAT I RA 151/14	150 DA 176	
S-ILS 24		SA CAT II RA 108/12	100 DA 126	

### SA CATEGORY I & II ILS SPECIAL AIRCREW & AIRCRAFT CERTIFICATION REQUIRED

SE-2, 22 FEB 2024 to 21 MAR 2024

SE-2, 22 FEB 2024 to 21 MAR 2024

LOC I-GMX <b>111.55</b>	APP CRS <b>238°</b>	Rwy Idg <b>8016</b> TDZE <b>26</b> Apt Elev <b>32</b>
----------------------------	------------------------	---

# ILS Y or LOC RWY 24

WILMINGTON INTL (ILM)

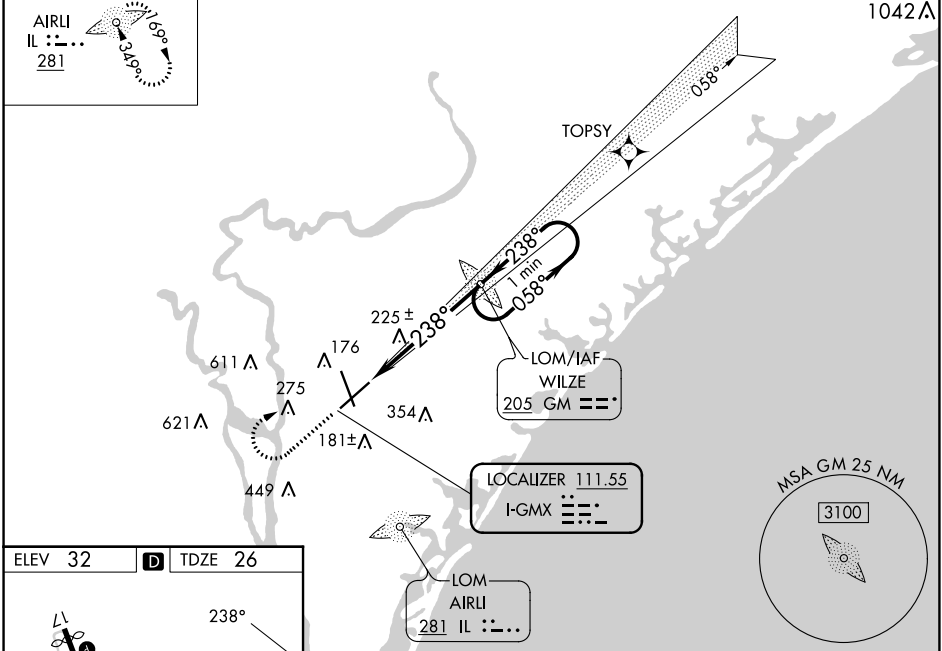
<p><b>**RVR 1800 authorized with use of FD or AP or HUD to DA. ADF required.</b></p>	<p>MALSR</p>	<p>MISSED APPROACH: Climb to 500 then climbing right turn to 1800 direct WILZE LOM and hold.</p>
--	--------------	--

<p>ATIS <b>124.975</b></p>	<p>WILMINGTON APP CON ★ <b>118.25 284.65</b> (164°-343°) <b>135.75 317.425</b> (344°-163°)</p>	<p>WILMINGTON TOWER ★ <b>119.9</b>(CTAF) <b>239.3</b></p>	<p>GND CON <b>121.9 348.6</b></p>	<p>UNICOM <b>122.95</b></p>
--------------------------------	--	---	---------------------------------------	---------------------------------

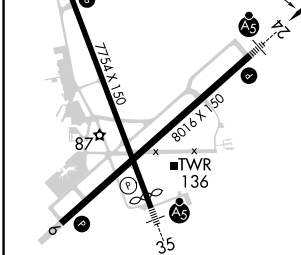
ALTERNATE MISSED APCH FIX

AIRLI  
IL :--..  
281

## RNAV 1-GPS or RADAR REQUIRED



ELEV 32	<b>D</b>	TDZE 26
---------	----------	---------



500	1800	GM	WILZE LOM	One Minute Holding Pattern
<p>VGSI and ILS glidepath not coincident (VGSI Angle 3.00/TCH 48).</p>			1798	1800
			238°	GS 3.00° TCH 52

	FAF to MAP 5.3 NM				
Knots	60	90	120	150	180
Min:Sec	5:18	3:32	2:39	2:07	1:46
<b>C</b> CIRCLING	560-1	528 (600-1)	720-2 688 (700-2)	920-3 888 (900-3)	

SE-2, 22 FEB 2024 to 21 MAR 2024

SE-2, 22 FEB 2024 to 21 MAR 2024

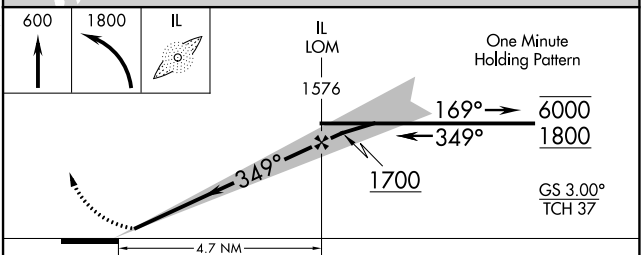
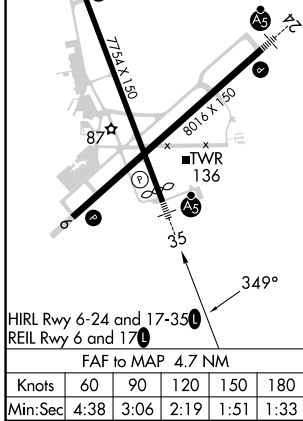
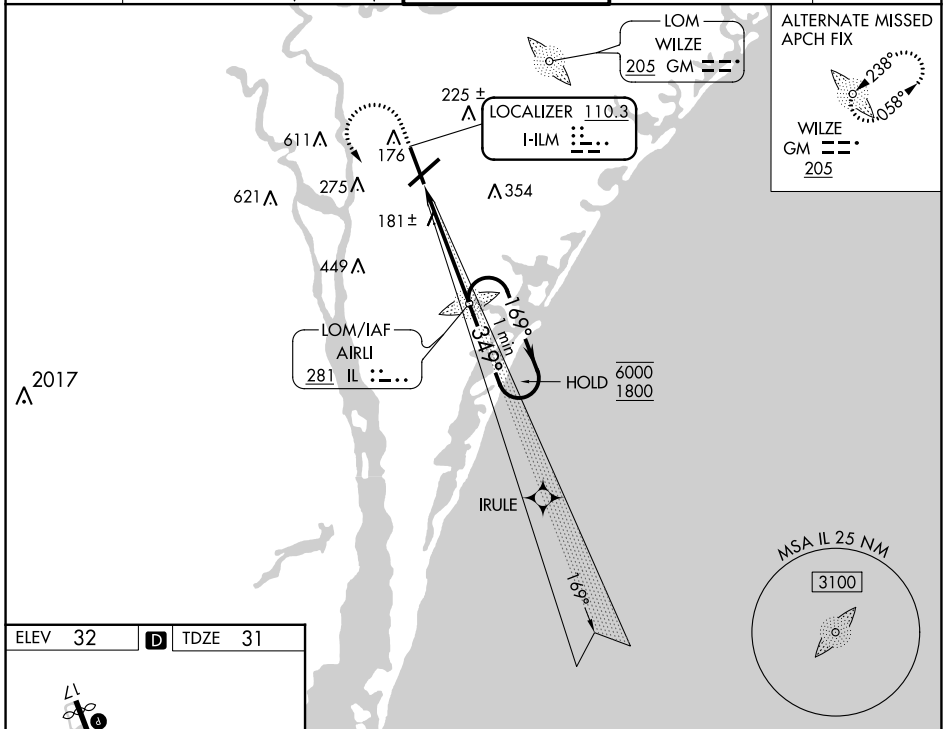
LOC I-ILM <b>110.3</b>	APP CRS <b>349°</b>	Rwy Idg TDZE Apt Elev	<b>7204</b> <b>31</b> <b>32</b>
---------------------------	------------------------	-----------------------------	---------------------------------------

# ILS Y or LOC RWY 35

WILMINGTON INTL (ILM)

ADF required. RADAR required for procedure entry.		MALSR 	MISSED APPROACH: Climb to 600 then climbing left turn to 1800 direct AIRLI LOM and hold.
For inop ALS, increase S-LOC 35 Cat C/D visibility to 1 1/2 SM.			

ATIS <b>124.975</b>	WILMINGTON APP CON ★ <b>118.25 284.65</b> (164°-343°) <b>135.75 317.425</b> (344°-163°)	WILMINGTON TOWER ★ <b>119.9</b> (CTAF) <b>239.3</b>	GND CON <b>121.9 348.6</b>	UNICOM <b>122.95</b>
------------------------	---	--	-------------------------------	-------------------------



CATEGORY	A	B	C	D
S-ILS 35	242/24 211 (300-1/2)			
S-LOC 35	500/24	469 (500-1/2)	500/50	469 (500-1)
<input checked="" type="checkbox"/> CIRCLING	560-1	528 (600-1)	720-2 688 (700-2)	920-3 888 (900-3)

LOC/DME I-GNM <b>109.95</b> Chan <b>36 (Y)</b>	APP CRS <b>058°</b>	Rwy Idg <b>8016</b> TDZE <b>28</b> Apt Elev <b>32</b>
--	------------------------	---

# ILS Y or LOC RWY 6

WILMINGTON INTL (ILM)

**ADF required.**  
DME required.

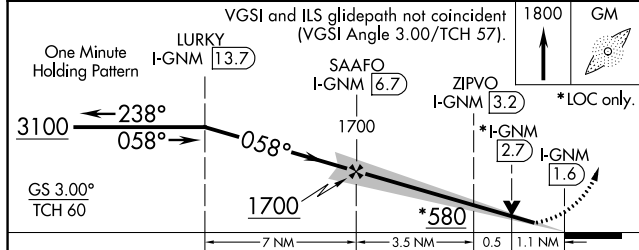
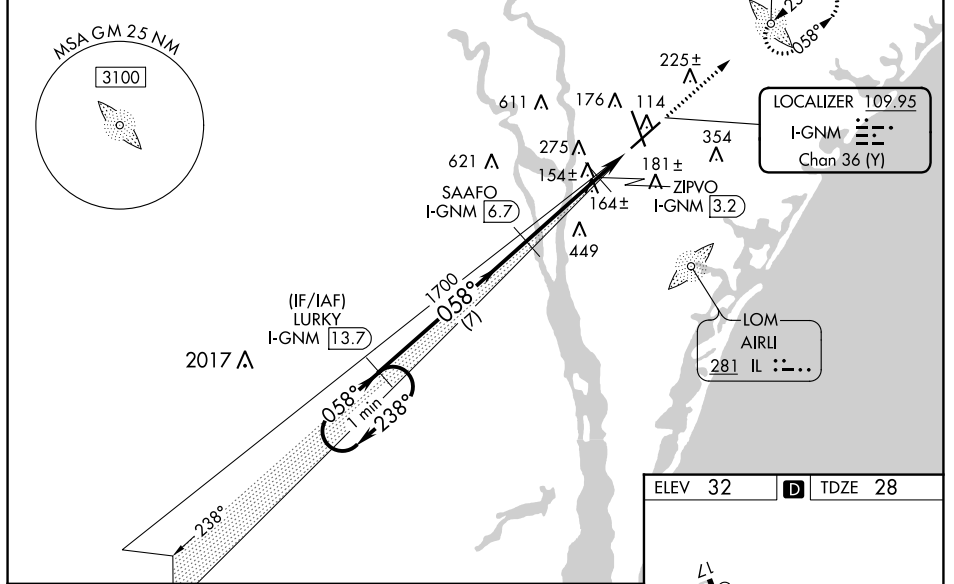
MISSED APPROACH: Climb to 1800  
direct WILZE LOM and hold.

ATIS <b>124.975</b>	WILMINGTON APP CON ★ <b>118.25 284.65</b> (164°-343°) <b>135.75 317.425</b> (344°-163°)	WILMINGTON TOWER★ <b>119.9</b> (CTAF) <b>239.3</b>	GND CON <b>121.9 348.6</b>	UNICOM <b>122.95</b>
------------------------	---	---	-------------------------------	-------------------------

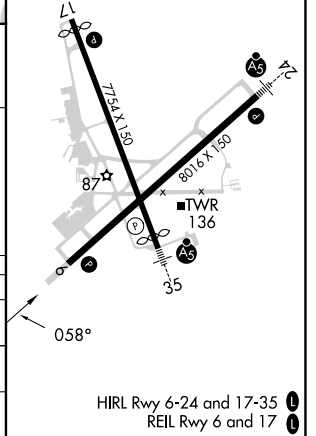
ALTERNATE MISSED APCH FIX

AIRLI  
IL : - : - : - :  
**281**

## RNAV 1-GPS or RADAR REQUIRED



ELEV <b>32</b>	<b>D</b> TDZE <b>28</b>
----------------	-------------------------



CATEGORY	A	B	C	D
S-ILS 6	228/40		200 (200-¾)	
S-LOC 6	420/55	392 (400-1)	420/60	392 (400-1¼)
<b>C</b> CIRCLING	560-1	528 (600-1)	720-2 688 (700-2)	920-3 888 (900-3)



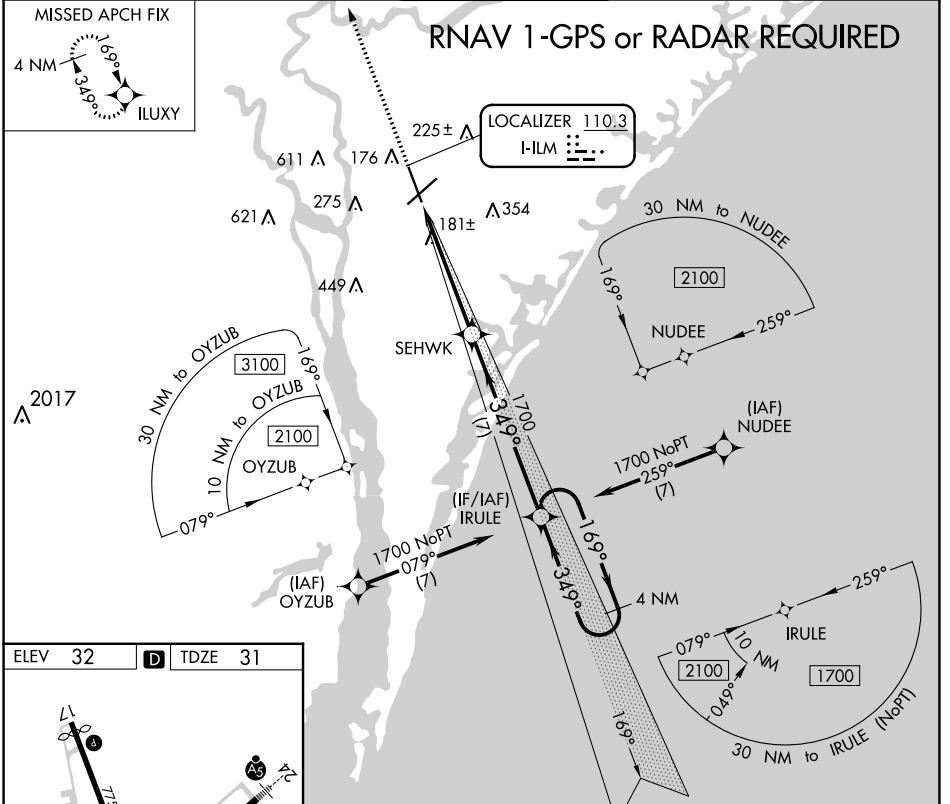
LOC I-ILM <b>110.3</b>	APP CRS <b>349°</b>	Rwy Idg <b>7204</b> TDZE <b>31</b> Apt Elev <b>32</b>
---------------------------	------------------------	---

# ILS Z RWY 35

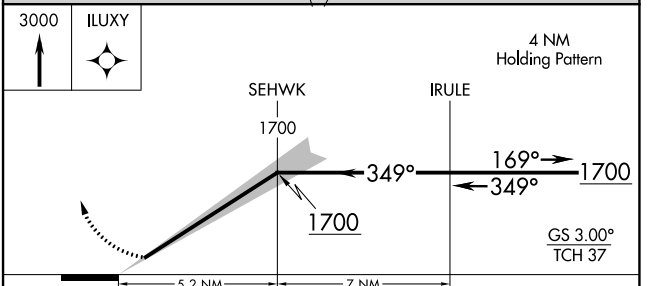
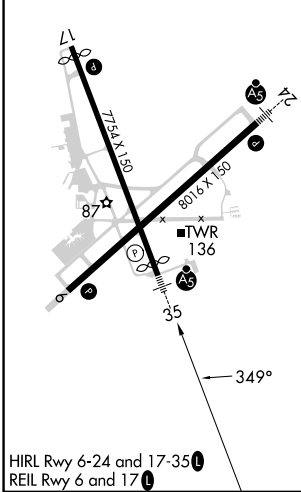
WILMINGTON INTL (ILM)

<b>▽</b> <b>▲</b> NA	RNAV 1-GPS required.	MALSR <b>A5</b>	MISSED APPROACH: Climb to 3000 direct ILUXY and hold.
-------------------------	----------------------	--------------------	---

ATIS <b>124.975</b>	WILMINGTON APP CON ★ <b>118.25 284.65</b> (164°-343°) <b>135.75 317.425</b> (344°-163°)	WILMINGTON TOWER ★ <b>119.9</b> (CTAF) <b>239.3</b>	GND CON <b>121.9 348.6</b>	UNICOM <b>122.95</b>
------------------------	---	--	-------------------------------	-------------------------



ELEV 32	<b>D</b>	TDZE 31
---------	----------	---------



CATEGORY	A	B	C	D
S-ILS 35	242/24 211 (300-½)			

SE-2, 22 FEB 2024 to 21 MAR 2024

SE-2, 22 FEB 2024 to 21 MAR 2024

LOC/DME I-GNM <b>109.95</b> Chan 36 (Y)	APP CRS <b>058°</b>	Rwy Idg <b>8016</b> TDZE <b>28</b> Apt Elev <b>32</b>
---	------------------------	---

# ILS Z RWY 6

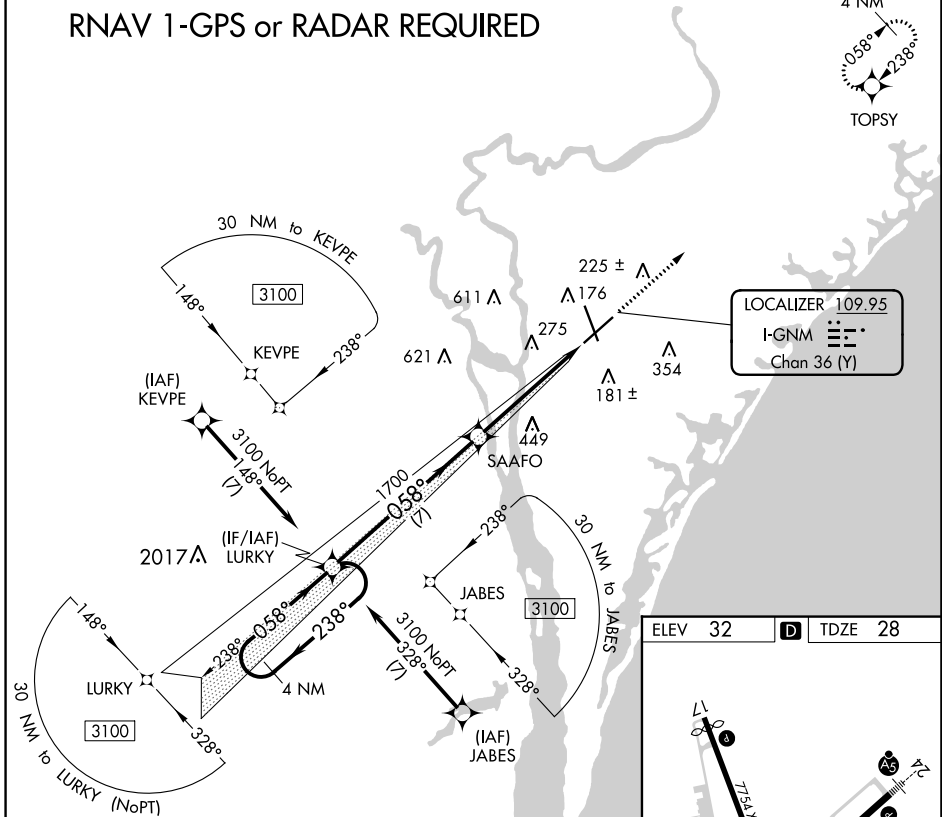
WILMINGTON INTL (ILM)

**RNAV 1-GPS required.**

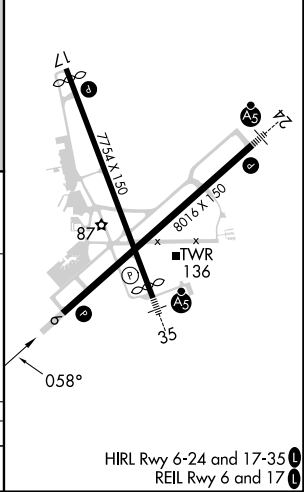
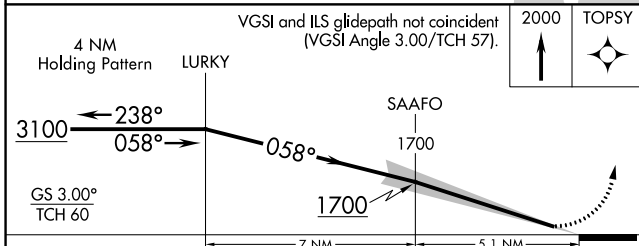
MISSED APPROACH: Climb to 2000 direct TOPSY and hold.

ATIS <b>124.975</b>	WILMINGTON APP CON * <b>118.25 284.65</b> (164°-343°) <b>135.75 317.425</b> (344°-163°)	WILMINGTON TOWER * <b>119.9</b> (CTAF) <b>239.3</b>	GND CON <b>121.9 348.6</b>	UNICOM <b>122.95</b>
------------------------	---	--	-------------------------------	-------------------------

## RNAV 1-GPS or RADAR REQUIRED



ELEV 32	D	TDZE 28
---------	---	---------



CATEGORY	A	B	C	D
S-ILS 6	228/40		200 (200-¾)	

HIRL Rwy 6-24 and 17-35  
REIL Rwy 6 and 17

SE-2, 22 FEB 2024 to 21 MAR 2024

SE-2, 22 FEB 2024 to 21 MAR 2024

WAAS CH <b>90499</b> <b>W17A</b>	APP CRS <b>169°</b>	Rwy Idg <b>6604</b> TDZE <b>32</b> Apt Elev <b>32</b>
--	------------------------	---

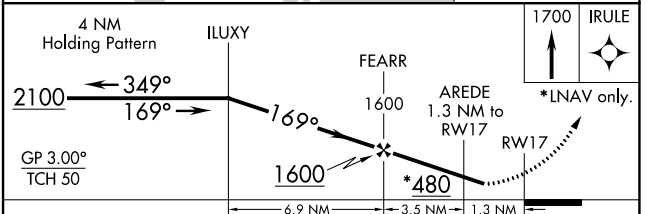
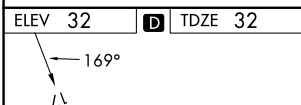
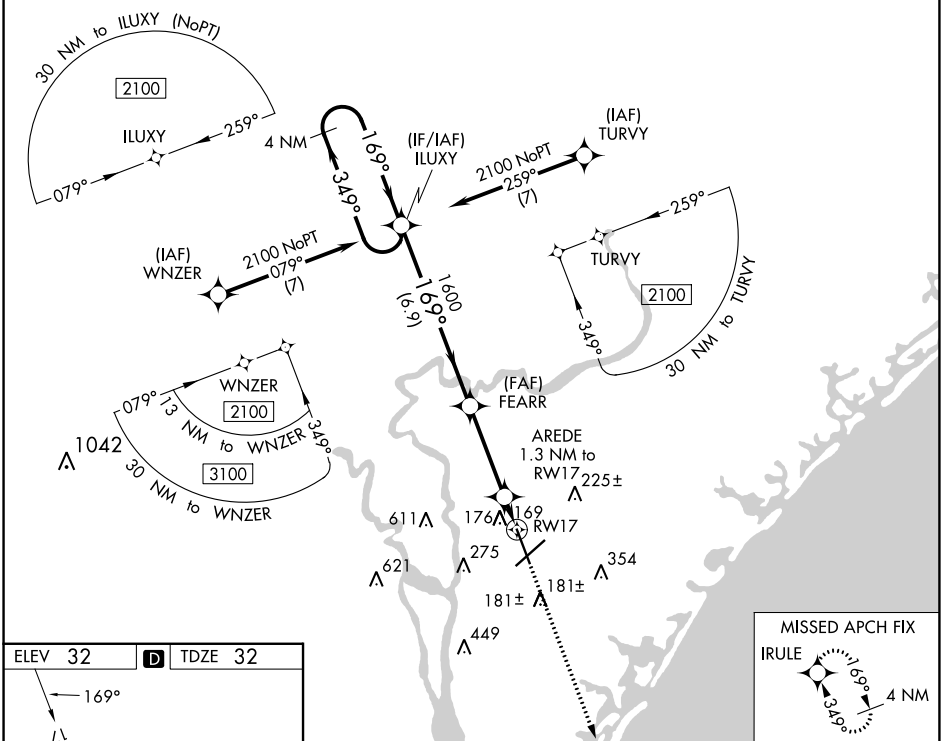
# RNAV (GPS) RWY 17

WILMINGTON INTL (ILM)

**⚠** For uncompensated Baro-VNAV systems, LNAV/VNAV NA below -7°C (20°F) or above 54°C (130°F). DME/DME RNP-0.3 NA. Rwy 17 helicopter visibility reduction below ¾ SM NA.

MISSED APPROACH: Climb to 1700 direct IRULE and hold.

ATIS <b>124.975</b>	WILMINGTON APP CON * <b>118.25 284.65</b> (164°-343°) <b>135.75 317.425</b> (344°-163°)	WILMINGTON TOWER * <b>119.9</b> (CTAF) <b>0 239.3</b>	GND CON <b>121.9 348.6</b>	UNICOM <b>122.95</b>
------------------------	---	--	-------------------------------	-------------------------



CATEGORY	A	B	C	D
LPV DA		369-1/8	337 (400-1/8)	
LNAV/VNAV DA		405-1/4	373 (400-1/4)	
LNAV MDA	420-1	388 (400-1)	420-1/8	388 (400-1/8)
<b>C</b> CIRCLING	560-1	528 (600-1)	720-2 688 (700-2)	920-3 888 (900-3)

HIRL Rwy 6-24 and 17-35 **Ⓛ**  
REIL Rwy 6 and 17 **Ⓛ**

SE-2, 22 FEB 2024 to 21 MAR 2024

SE-2, 22 FEB 2024 to 21 MAR 2024



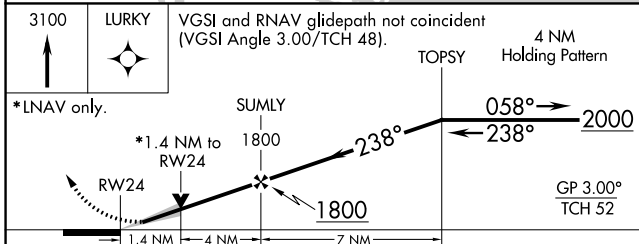
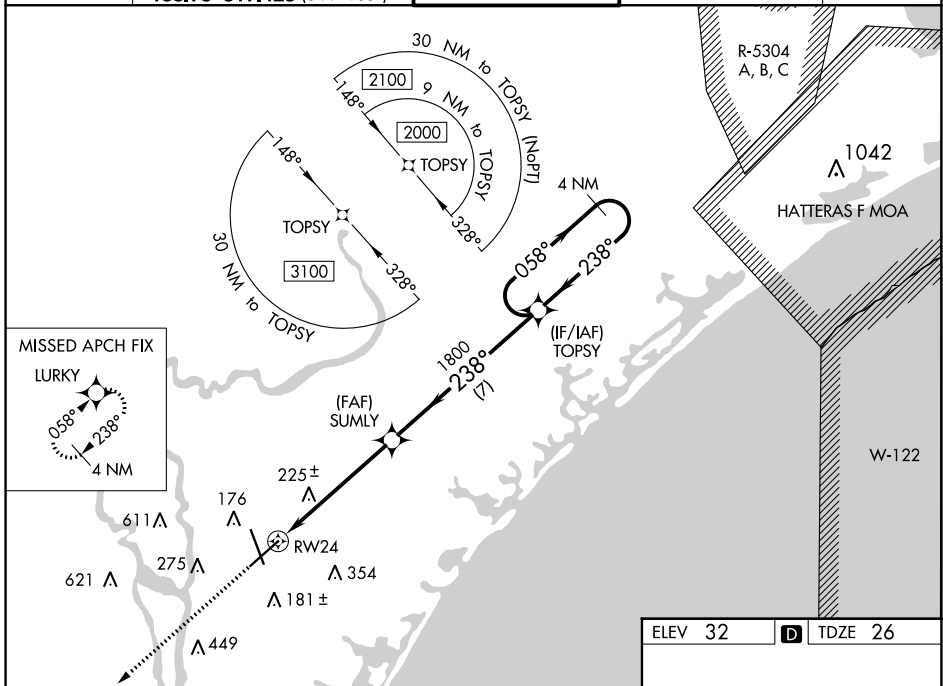
WAAS CH <b>45899</b> <b>W24A</b>	APP CRS <b>238°</b>	Rwy Idg <b>8016</b> TDZE <b>26</b> Apt Elev <b>32</b>
--	------------------------	---

# RNAV (GPS) RWY 24

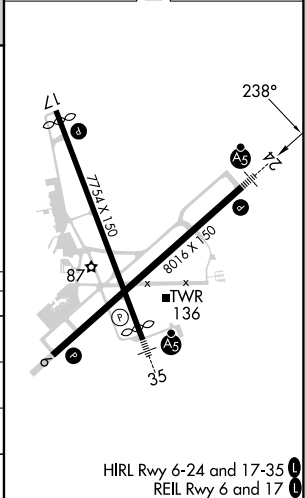
WILMINGTON INTL (ILM)

	For uncompensated Baro-VNAV systems, LNAV/VNAV NA below -7°C (20°F) or above 54°C (130°F). DME/DME RNP-0.3 NA. ** RVR 1800 authorized with use of FD or AP or HUD to DA.	MALSR 	MISSED APPROACH: Climb to 3100 direct LURKY and hold.
--	--	-----------	---

ATIS <b>124.975</b>	WILMINGTON APP CON * <b>118.25 284.65</b> (164°-343°) <b>135.75 317.425</b> (344°-163°)	WILMINGTON TOWER * <b>119.9</b> (CTAF) <b>239.3</b>	GND CON <b>121.9 348.6</b>	UNICOM <b>122.95</b>
------------------------	---	--	-------------------------------	-------------------------



ELEV 32	D	TDZE 26
---------	---	---------



CATEGORY	A	B	C	D
LPV DA **	226/24 200 (200-½)			
LNAV/VNAV DA	401/40 375 (400-¾)			
LNAV MDA	500/24 474 (500-½)		500/50 474 (500-1)	
CIRCLING	560-1 528 (600-1)		720-2 688 (700-2)	920-3 888 (900-3)

SE-2, 22 FEB 2024 to 21 MAR 2024

SE-2, 22 FEB 2024 to 21 MAR 2024

WAAS CH <b>50499</b> <b>W35A</b>	APP CRS <b>349°</b>	Rwy Idg <b>7204</b> TDZE <b>31</b> Apt Elev <b>32</b>
--	------------------------	---

# RNAV (GPS) RWY 35

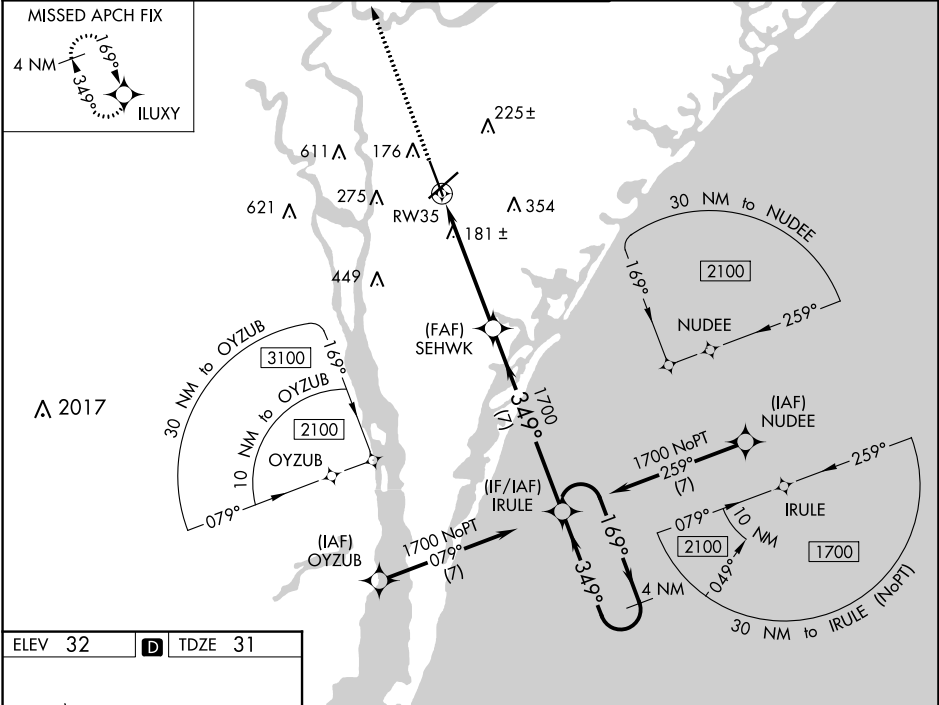
WILMINGTON INTL (ILM)

**⚠** For uncompensated Baro-VNAV systems, LNAV/VNAV NA below -7°C (20°F) or above 54°C (130°F). DME/DME RNP-0.3 NA. For inop ALS, increase LNAV Cats C/D visibility to 1½ SM.



**MISSED APPROACH:**  
Climb to 3000 direct  
ILUXY and hold.

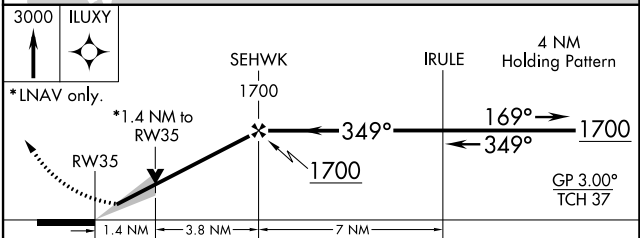
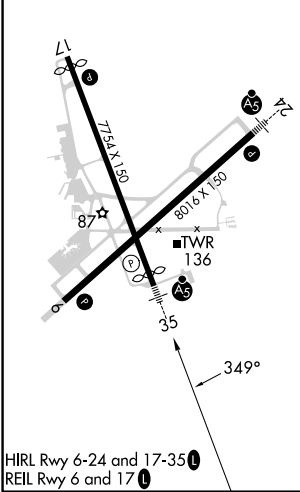
ATIS <b>124.975</b>	WILMINGTON APP CON ★ <b>118.25 284.65</b> (164°-343°) <b>135.75 317.425</b> (344°-163°)	WILMINGTON TOWER ★ <b>119.9</b> (CTAF) <b>0 239.3</b>	GND CON <b>121.9 348.6</b>	UNICOM <b>122.95</b>
------------------------	---	--	-------------------------------	-------------------------



SE-2, 22 FEB 2024 to 21 MAR 2024

SE-2, 22 FEB 2024 to 21 MAR 2024

ELEV 32	<b>D</b>	TDZE 31
---------	----------	---------



CATEGORY	A	B	C	D
LPV DA		242/24	211 (300-½)	
LNAV/VNAV DA		426/45	395 (400-¾)	
LNAV MDA	500/24	469 (500-½)	500/50	469 (500-1)
<b>C</b> CIRCLING	560-1	528 (600-1)	720-2 688 (700-2)	920-3 888 (900-3)

WAAS CH <b>86599</b> <b>W06A</b>	APP CRS <b>058°</b>	Rwy Idg TDZE Apt Elev	<b>8016</b> <b>28</b> <b>32</b>
--	------------------------	-----------------------------	---------------------------------------

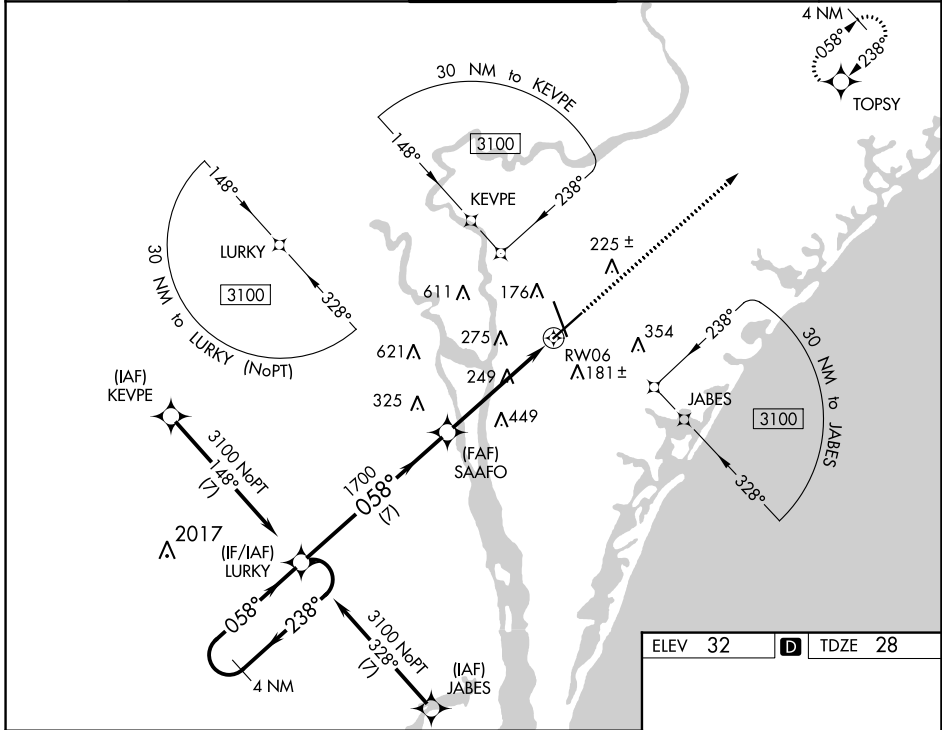
# RNAV (GPS) RWY 6

WILMINGTON INTL (ILM)

**⚠** For uncompensated Baro-VNAV systems, LNAV/VNAV NA below -7°C (20°F) or above 54°C (130°F). DME/DME RNP-0.3 NA.

MISSED APPROACH: Climb to 2000 direct TOPSY and hold.

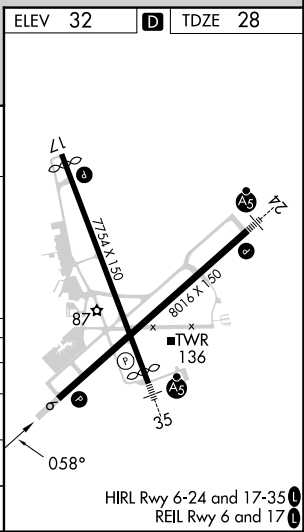
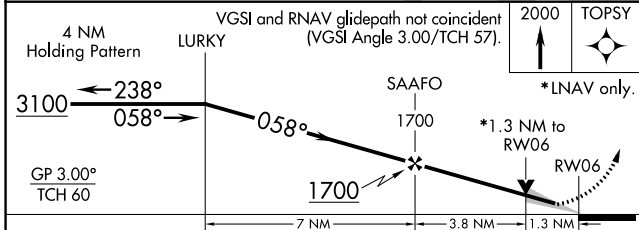
ATIS <b>124.975</b>	WILMINGTON APP CON * <b>118.25 284.65</b> (164°-343°) <b>135.75 317.425</b> (344°-163°)	WILMINGTON TOWER * <b>119.9</b> (CTAF) <b>239.3</b>	GND CON <b>121.9 348.6</b>	UNICOM <b>122.95</b>
------------------------	---	--	-------------------------------	-------------------------



SE-2, 22 FEB 2024 to 21 MAR 2024

SE-2, 22 FEB 2024 to 21 MAR 2024

ELEV 32	<b>D</b> TDZE 28
---------	------------------



CATEGORY	A	B	C	D
LPV DA	228/40 200 (200-¾)			
LNAV/VNAV DA	434/60 406 (500-1½)			
LNAV MDA	500/55 472 (500-1)	500-1¾ 472 (500-1¾)		
<b>C</b> CIRCLING	560-1 528 (600-1)	720-2 688 (700-2)	920-3 888 (900-3)	

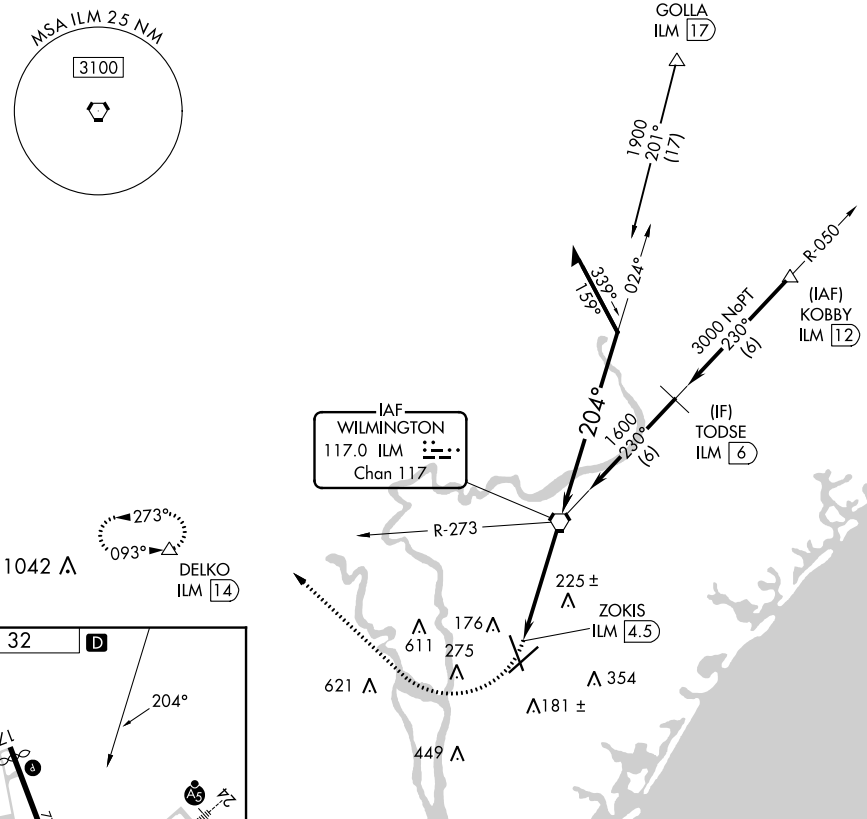
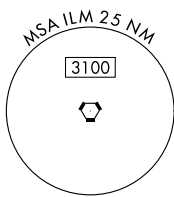
VORTAC ILM <b>117.0</b> Chan <b>117</b>	APP CRS <b>204°</b>	Rwy Idg TDZE Apt Elev	<b>N/A</b> <b>N/A</b> <b>32</b>
---	------------------------	-----------------------------	---------------------------------------

# TACAN-A

WILMINGTON INTL (ILM)

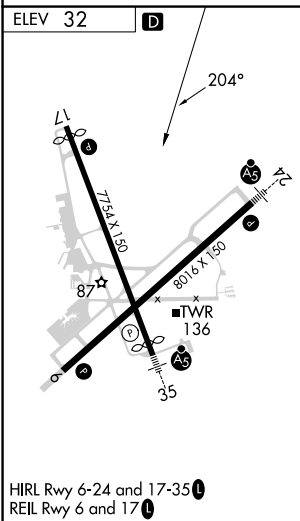
MISSED APPROACH: Climbing right turn to 3000 heading 320° and ILM R-273 to DELKO/ILM 14 DME and hold.

ATIS <b>124.975</b>	WILMINGTON APP CON ★ <b>118.25 284.65</b> (164°-343°) <b>135.75 317.425</b> (344°-163°)	WILMINGTON TOWER ★ <b>119.9</b> (CTAF) <b>0 239.3</b>	GND CON <b>121.9 348.6</b>	UNICOM <b>122.95</b>
------------------------	---	--	-------------------------------	-------------------------



SE-2, 22 FEB 2024 to 21 MAR 2024

SE-2, 22 FEB 2024 to 21 MAR 2024



3000 hdg 320°	ILM R-273	DELKO	ILM VORTAC	Remain within 10 NM	
ZOKIS ILM 4.5		1600			
4.5 NM		1900			
CATEGORY		A	B	C	D
CIRCLING		560-1	528 (600-1)	720-2 688 (700-2)	920-3 888 (900-3)