

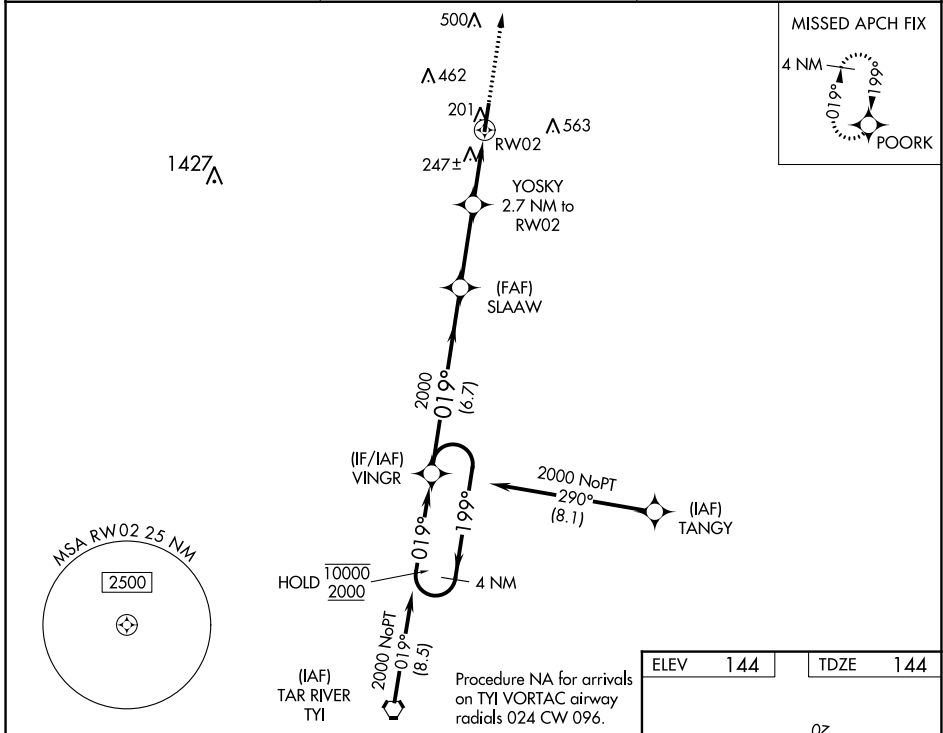
WAAS CH 78025 W02A	APP CRS 019°	Rwy Idg 5500 TDZE 144 Apt Elev 144
--	------------------------	---

RNAV (GPS) RWY 2

HALIFAX/NORTHAMPTON RGNL (IXA)

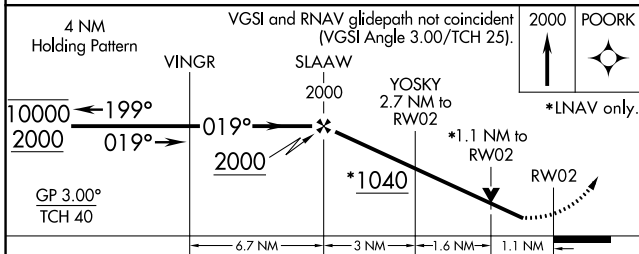
RNP APCH - GPS	Rwy 2 helicopter visibility reduction below 3/4 SM NA. For uncompensated Baro-VNAV systems, LNAV/VNAV NA below -15°C or above 54°C. Circling NA east of Rwys 2-20.	MISSED APPROACH: Climb to 2000 direct POORK and hold.
----------------	--	---

AWOS-3PT 119.975	WASHINGTON CENTER 132.025 290.425	UNICOM 123.075 (CTAF) 0
----------------------------	---	-----------------------------------

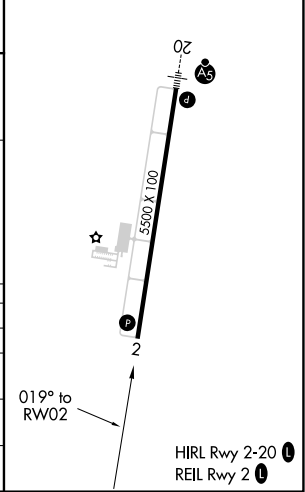


SE-2, 22 FEB 2024 to 21 MAR 2024

SE-2, 22 FEB 2024 to 21 MAR 2024



ELEV	144	TDZE	144
------	-----	------	-----



CATEGORY	A	B	C	D
LPV DA		394-7/8	250 (300-7/8)	
LNAV/VNAV DA		433-1	289 (300-1)	
LNAV MDA		500-1	356 (400-1)	
CIRCLING	580-1	600-1	780-1 3/4	860-2 1/4
	436 (500-1)	456 (500-1)	636 (700-1 3/4)	716 (800-2 1/4)


WAAS CH 72725 W20A	APP CRS 199°	Rwy Idg 5500 TDZE 144 Apt Elev 144
--	------------------------	---

RNAV (GPS) RWY 20

HALIFAX/NORTHAMPTON RGNL (IXA)

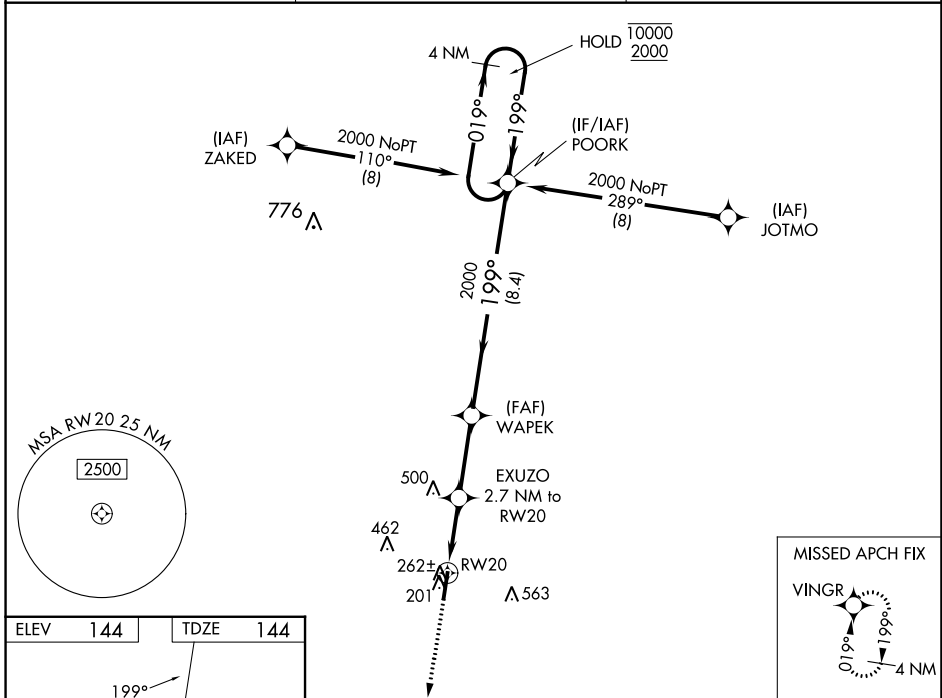
RNP APCH-GPS.

⚠ Circling NA east of Rwy 2-20. Rwy 20 helicopter visibility reduction below 3/4 SM NA. Inop table does not apply to LPV. For uncompensated Baro-VNAV systems, LNAV/VNAV NA below -1.5°C or above 54°C. For inop ALS increase LNAV/VNAV visibility all Cats to 3/8 SM and LNAV visibility all Cats to 1 SM.

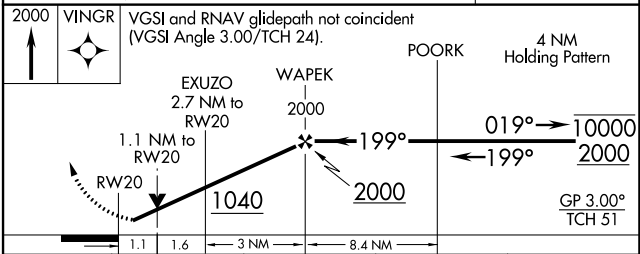
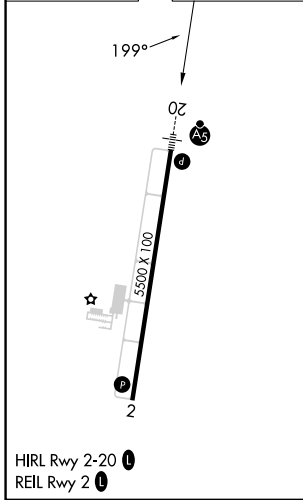
MALSR 

MISSED APPROACH: Climb to 2000 direct VINGR and hold.

AWOS-3PT 119.975	WASHINGTON CENTER 132.025 290.425	UNICOM 123.075 (CTAF) 0
----------------------------	---	-----------------------------------



ELEV 144	TDZE 144
-----------------	-----------------



CATEGORY	A	B	C	D
LPV DA		394-3/4	250 (300-3/4)	
LNAV/VNAV DA		423-3/4	279 (300-3/4)	
LNAV MDA		520-3/4	376 (400-3/4)	
<input checked="" type="checkbox"/> CIRCLING	580-1 436 (500-1)	600-1 456 (500-1)	780-1 3/4 636 (700-1 3/4)	860-2 1/4 716 (800-2 1/4)

SE-2, 22 FEB 2024 to 21 MAR 2024

SE-2, 22 FEB 2024 to 21 MAR 2024

VORTAC TYI 117.8 Chan 125	APP CRS 014°	Rwy Idg TDZE 144 Apt Elev 145	5500
---	------------------------	---	-------------

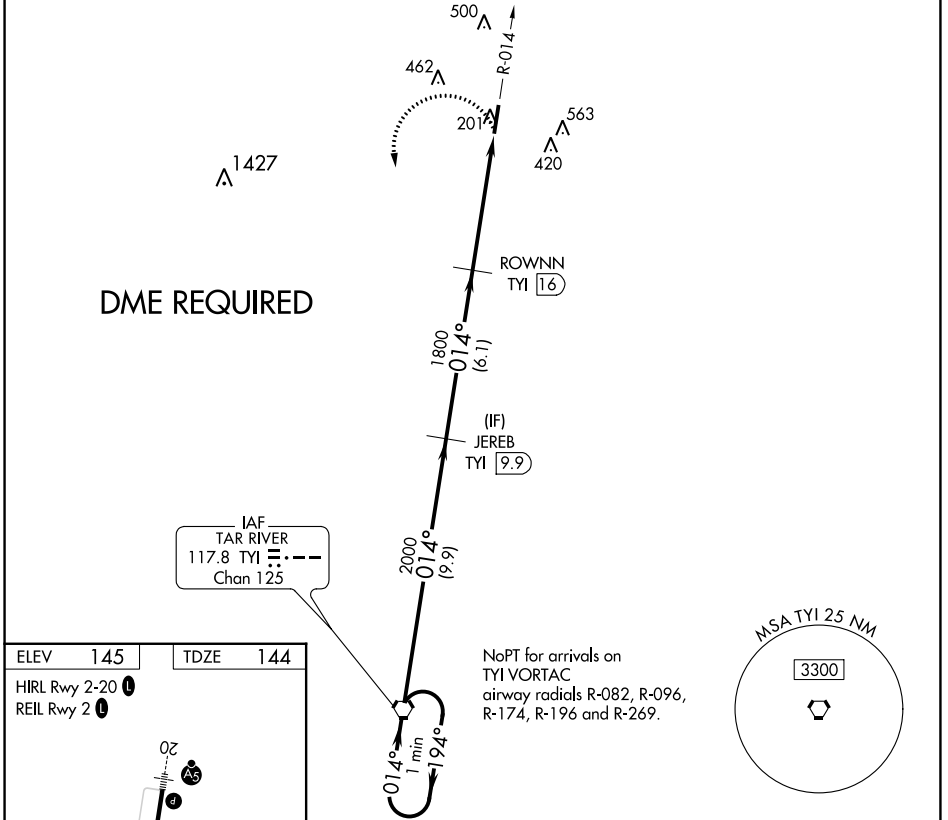
VOR RWY 2

HALIFAX/NORTHAMPTON RGNL (IXA)

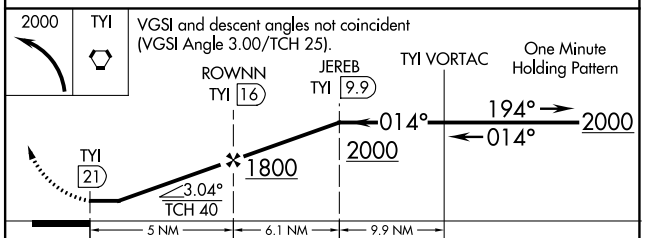
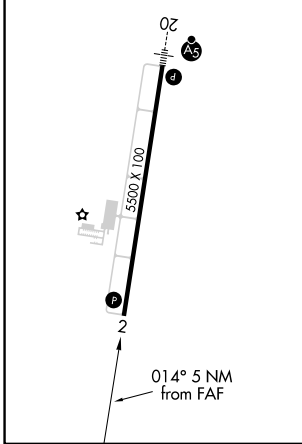
⚠ Circling NA east of Rwy 2-20.
⚠ Rwy 2 helicopter visibility reduction below 3/4 SM NA.
 DME required.

MISSED APPROACH: Climbing left turn to 2000 direct TYI VORTAC and hold.

AWOS-3PT 119.975	WASHINGTON CENTER 132.025 290.425	UNICOM 123.075 (CTAF)
----------------------------	---	---------------------------------



ELEV 145	TDZE 144
HIRL Rwy 2-20 Ⓛ	
REIL Rwy 2 Ⓛ	



CATEGORY	A	B	C	D
S-2	780-1	636 (700-1)	780-1 3/4	636 (700-1 3/4)
Ⓛ CIRCLING	780-1	635 (700-1)	780-1 3/4 635 (700-1 3/4)	860-2 1/4 715 (800-2 1/4)

SE-2, 22 FEB 2024 to 21 MAR 2024

SE-2, 22 FEB 2024 to 21 MAR 2024