

LOC I-YA 110.95	APP CRS 157°	Rwy Idg TDZE Apt Elev	5000 16 16
---------------------------	------------------------	-----------------------------	---------------------------------------

LOC RWY 16

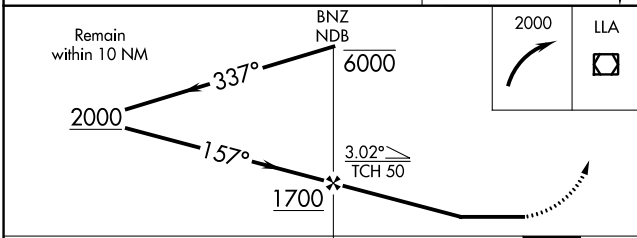
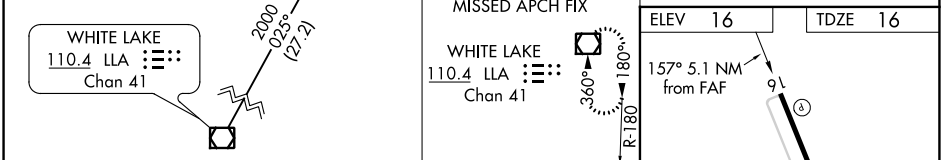
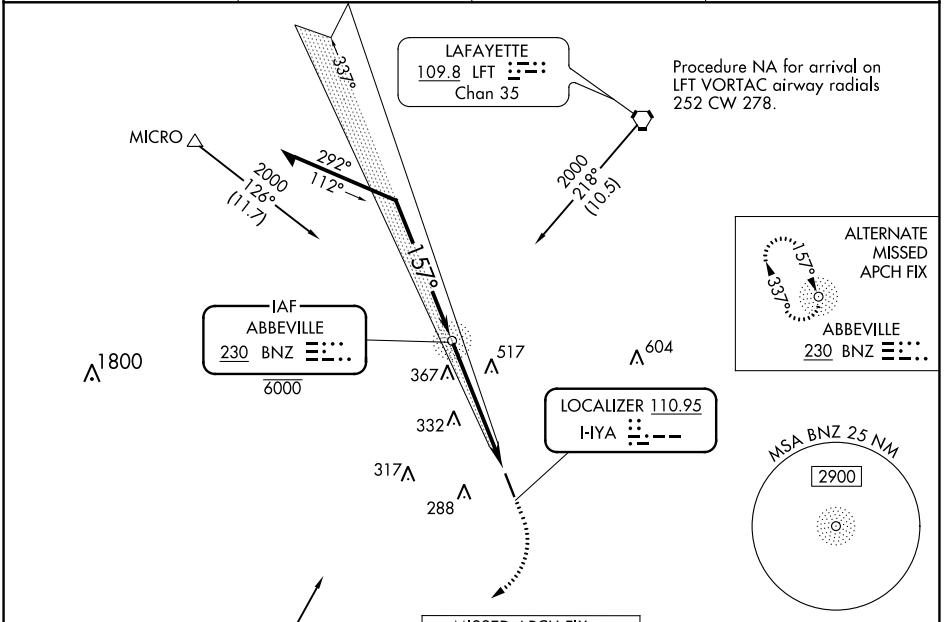
ABBEVILLE CHRIS CRUSTA MEMORIAL (IYA)

ADF required.

NA Rwy 16 helicopter visibility reduction below 3/4 SM NA. When local altimeter setting not received, use New Iberia altimeter setting and increase all MDA 40 feet and increase S-16 Cat C visibility 1/4 SM.

MISSED APPROACH: Climbing right turn to 2000 direct LLA VOR/DME and hold.

AWOS-3 118.875	LAFAYETTE APP CON ★ 121.1 268.7	GCO 135.075	UNICOM 122.8 (CTAF) 0
--------------------------	---	-----------------------	---------------------------------



CATEGORY	A	B	C	D
S-16	520-1	504 (600-1)	520-1 3/8 504 (600-1 3/8)	NA
CIRCLING	520-1 504 (600-1)	600-1 584 (600-1)	700-2 684 (700-1)	NA

MIRL Rwy 16-34	0
MIRL Rws 16 and 34	0
FAF to MAP 5.1 NM	
Knots	60 90 120 150 180
Min:Sec	5:06 3:24 2:33 2:02 1:42

LOC RWY 16

SC-4, 08 OCT 2020 to 05 NOV 2020

SC-4, 08 OCT 2020 to 05 NOV 2020

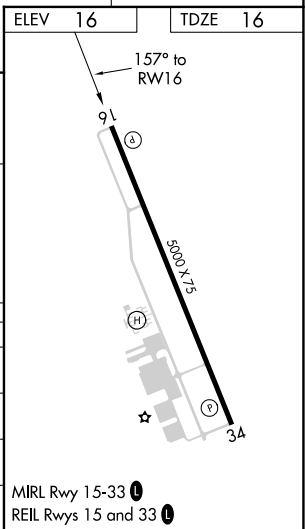
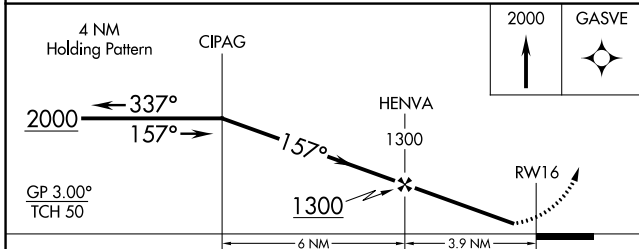
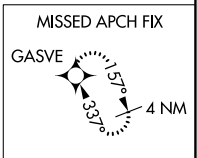
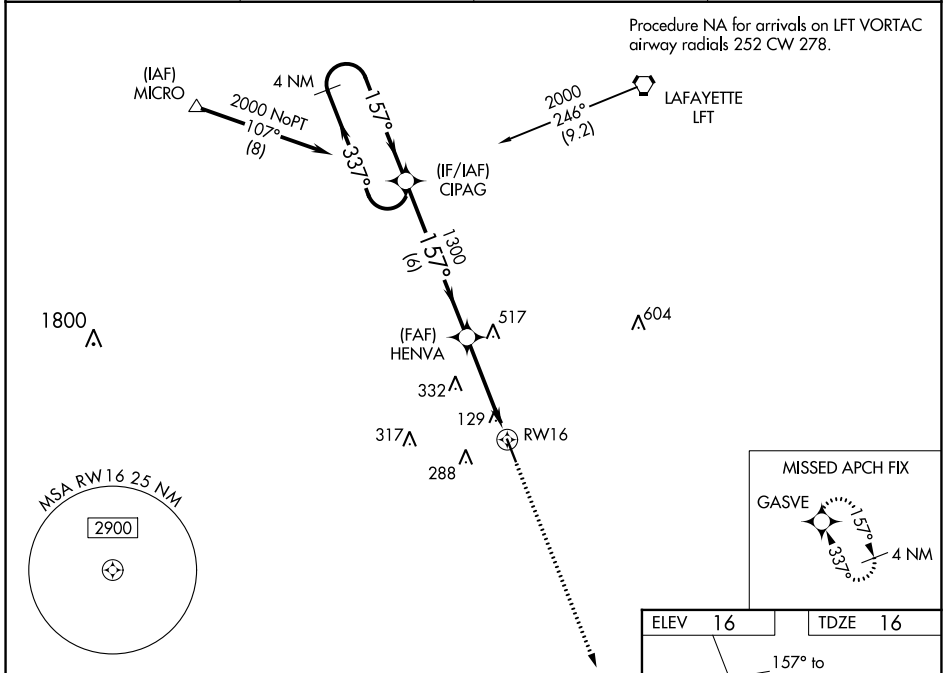
WAAS CH 78023 W16A	APP CRS 157°	Rwy Idg TDZE Apt Elev	5000 16 16
--	------------------------	-----------------------------	---------------------------------------

RNAV (GPS) RWY 16

ABBEVILLE CHRIS CRUSTA MEMORIAL (IYA)

RNP APCH.	Baro-VNAV NA when using New Iberia altimeter setting. For uncompensated Baro-VNAV systems, LNAV/VNAV NA below -15°C (5°F) or above 54°C (130°F). Helicopter visibility reduction below 3/4 SM NA. When local altimeter setting not received, use New Iberia altimeter setting and increase all DA 27 feet and all MDA 40 feet.	MISSED APPROACH: Climb to 2000 direct GASVE and hold.
-----------	--	--

AWOS-3 118.875	LAFAYETTE APP CON ★ 121.1 268.7	GCO 135.075	UNICOM 122.8 (CTAF) 0
--------------------------	---	-----------------------	---------------------------------



CATEGORY	A	B	C	D
LPV DA	266-1	250 (300-1)		NA
LNAV/VNAV DA	279-1	263 (300-1)		NA
LNAV MDA	380-1	364 (400-1)		NA
C CIRCLING	520-1 504 (600-1)	600-1 584 (600-1)	700-2 684 (700-2)	NA

RNAV (GPS) RWY 16

SC-4, 08 OCT 2020 to 05 NOV 2020

SC-4, 08 OCT 2020 to 05 NOV 2020

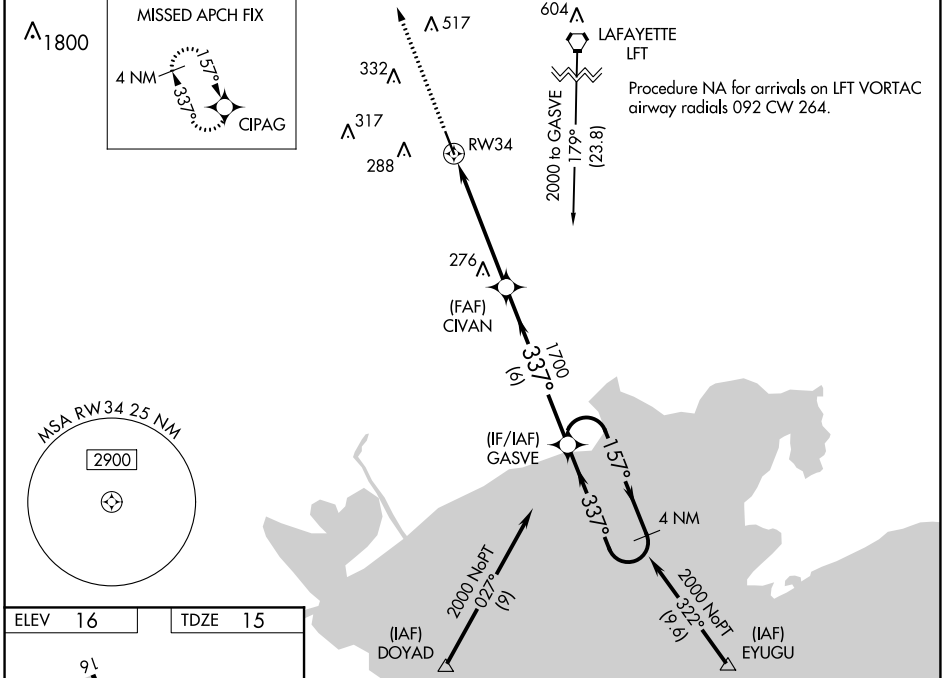
WAAS CH 45823 W34A	APP CRS 337°	Rwy Idg TDZE Apt Elev	5000 15 16
--	------------------------	-----------------------------	---------------------------------------

RNAV (GPS) RWY 34

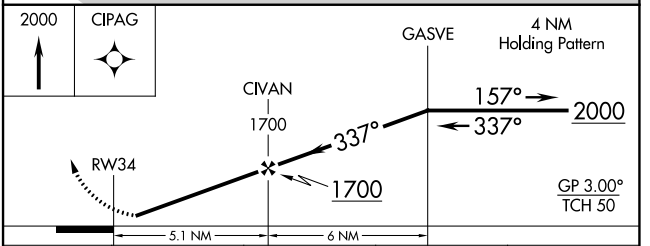
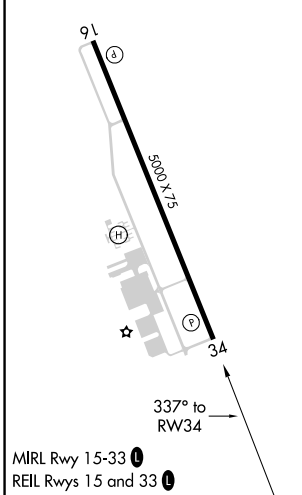
ABBEVILLE CHRIS CRUSTA MEMORIAL (IYA)

RNP APCH.	<p>Baro-VNAV NA when using New Iberia altimeter setting. For uncompensated Baro-VNAV systems, LNAV/VNAV NA below -15°C (5°F) or above 54°C (130°F). Helicopter visibility reduction below ¼ SM NA. When local altimeter setting not received, use New Iberia altimeter setting and increase all DA 27 feet and all MDA 40 feet; increase LNAV/VNAV all Cats visibility ⅛ SM.</p>	MISSED APPROACH: Climb to 2000 direct CIPAG and hold.
-----------	--	--

AWOS-3 118.875	LAFAYETTE APP CON ★ 121.1 268.7	GCO 135.075	UNICOM 122.8 (CTAF)
--------------------------	---	-----------------------	-------------------------------



ELEV 16	TDZE 15
---------	---------



CATEGORY	A	B	C	D
LPV DA	298-1	283 (300-1)		NA
LNAV/VNAV DA	320-1	305 (400-1)		NA
LNAV MDA	580-1	565 (600-1)	580-1½ 565 (600-1½)	NA
C CIRCLING	580-1 564 (600-1)	600-1 584 (600-1)	700-2 684 (700-2)	NA

SC-4, 08 OCT 2020 to 05 NOV 2020

SC-4, 08 OCT 2020 to 05 NOV 2020

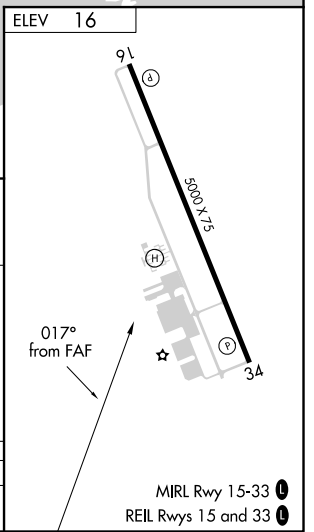
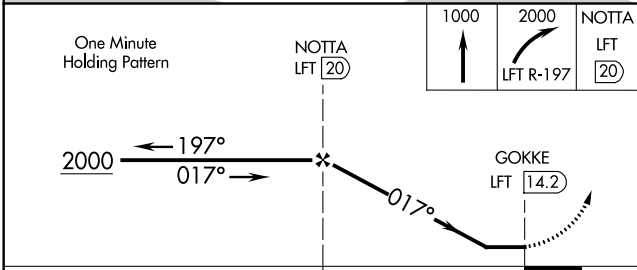
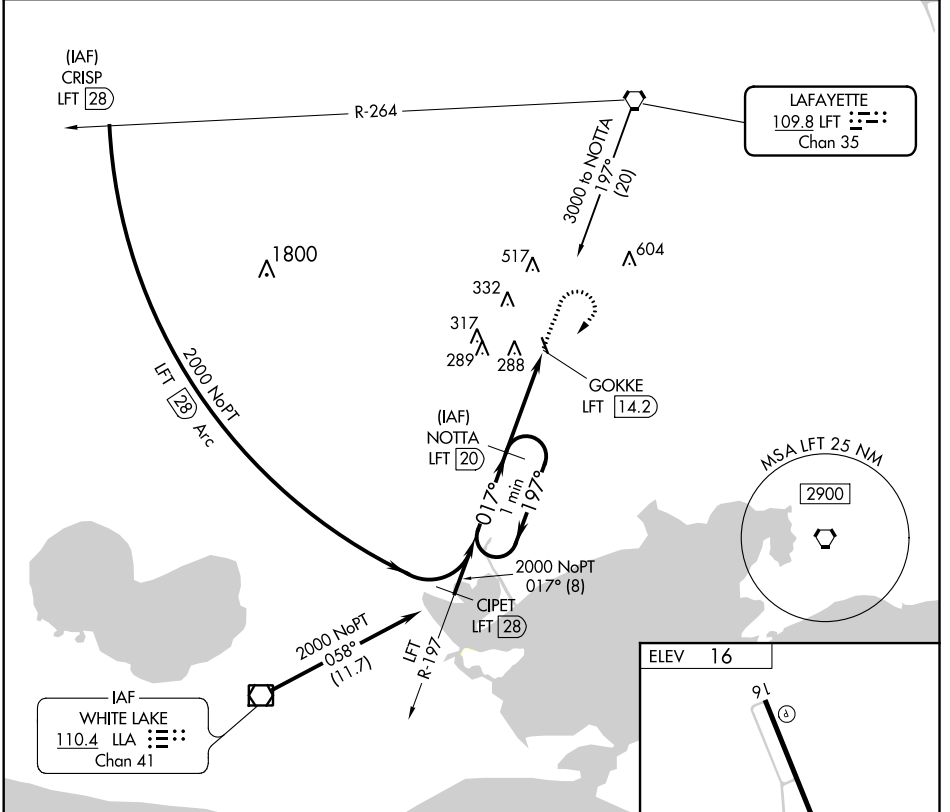
VORTAC LFT 109.8 Chan 35	APP CRS 017°	Rwy Idg TDZE Apt Elev N/A N/A 16
--	------------------------	--

VOR/DME-B

ABBEVILLE CHRIS CRUSTA MEMORIAL (1YA)

NA	When local altimeter setting not received, use New Iberia altimeter setting and increase all MDA 40 feet.	MISSED APPROACH: Climb to 1000, then climbing right turn to 2000 via LFT R-197 to NOTTA/LFT 20 DME and hold.
-----------	---	--

AWOS-3 118.875	LAFAYETTE APP CON * 121.1 268.7	GCO 135.075	UNICOM 122.8 (CTAF) 0
--------------------------	---	-----------------------	--



CATEGORY	A	B	C	D
CIRCLING	600-1	584 (600-1)	700-2 684 (700-2)	NA

SC-4, 08 OCT 2020 to 05 NOV 2020

SC-4, 08 OCT 2020 to 05 NOV 2020