

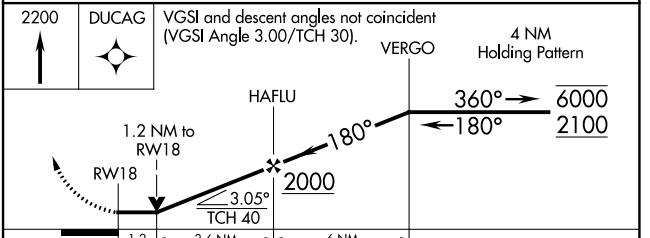
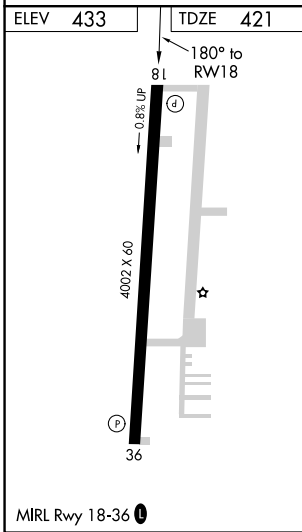
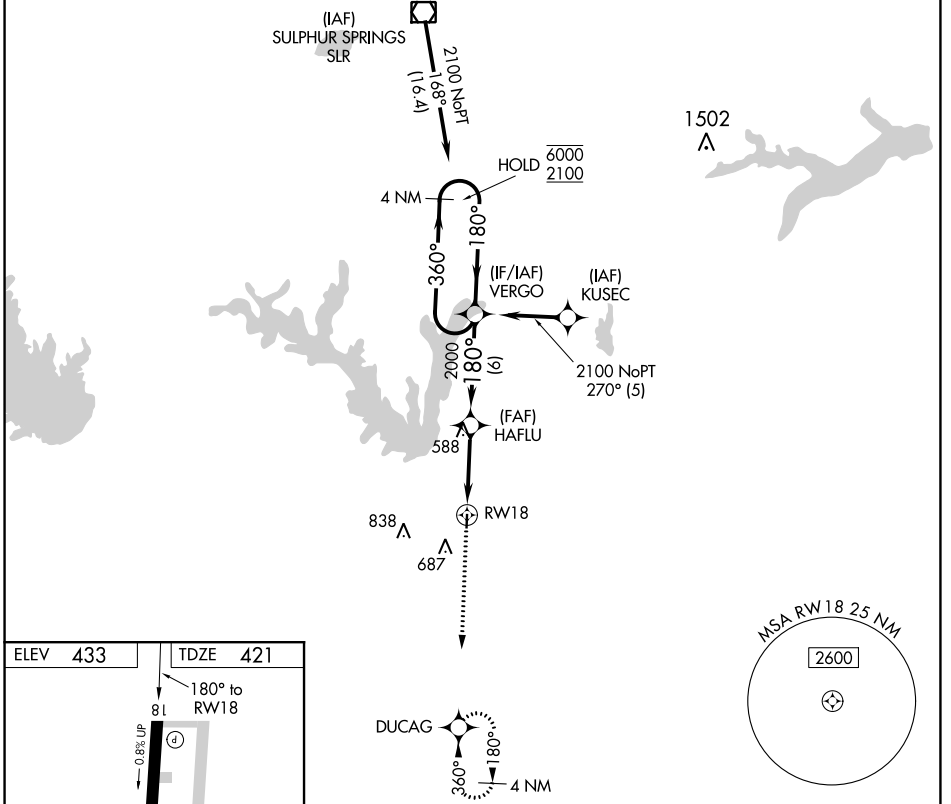
APP CRS	Rwy Idg	4002
180°	TDZE	421
	Apt Elev	433

RNAV (GPS) RWY 18

WOOD COUNTY-COLLINS FIELD (JDD)

RNP APCH.	MISSED APPROACH: Climb to 2200 direct DUCAG and hold.
<p>▼ Circling Rwy 36 NA at night.</p> <p>▲ Rwy 18 helicopter visibility reduction below ¾ SM NA.</p>	

AWOS-3 118.9	LONGVIEW APP CON ★ 128.75 379.15	UNICOM 122.8 (CTAF) 0
------------------------	--	---------------------------------



CATEGORY	A	B	C	D
LNAV MDA	820-1	399 (400-1)	820-1½ 399 (400-1½)	NA
CIRCLING	920-1 487 (500-1)	940-1 507 (600-1)	1000-1½ 567 (600-1½)	NA

SC-2, 07 OCT 2021 to 04 NOV 2021

SC-2, 07 OCT 2021 to 04 NOV 2021

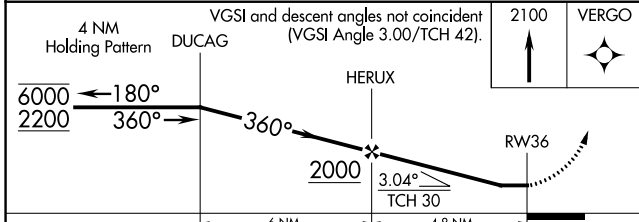
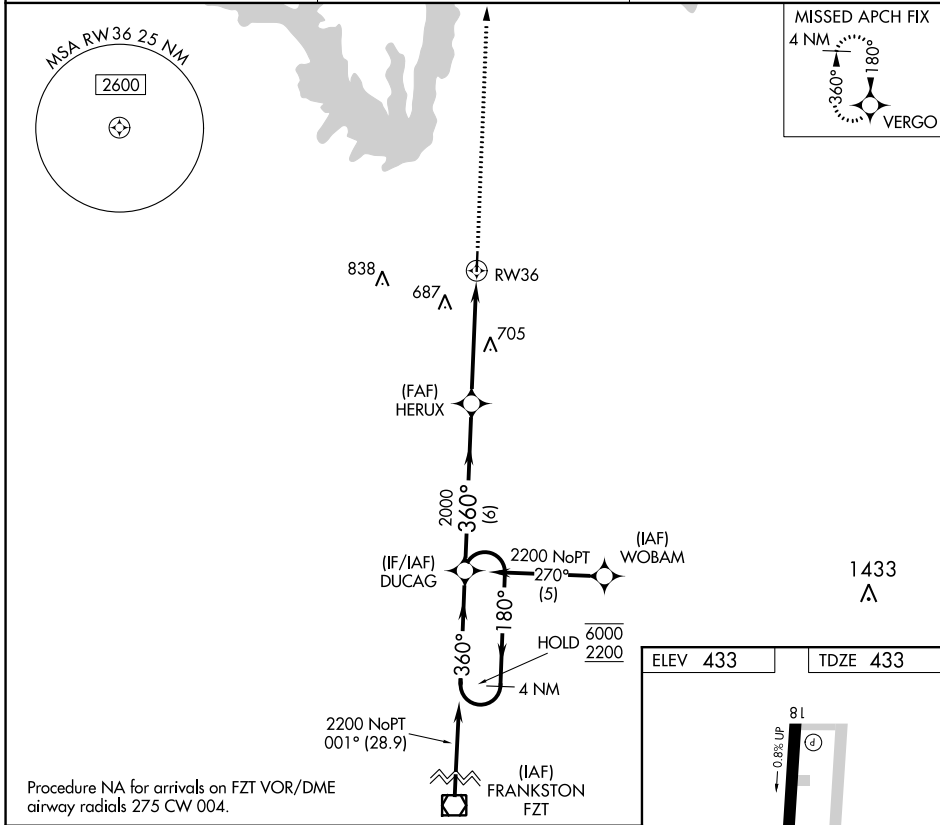
APP CRS	Rwy Idg	4002
360°	TDZE	433
	Apt Elev	433

RNAV (GPS) RWY 36

WOOD COUNTY-COLLINS FIELD (JDD)

RNP APCH.	MISSED APPROACH: Climb to 2100 direct VERGO and hold.
<p>▼ Rwy 36 helicopter visibility reduction below 1 SM NA.</p> <p>▲ Straight-in and Circling Rwy 36 NA at night.</p>	

AWOS-3 118.9	LONGVIEW APP CON * 128.75 379.15	UNICOM 122.8 (CTAF)
------------------------	--	-------------------------------



CATEGORY	A	B	C	D
RNAV MDA	960-1	527 (600-1)	960-1½ 527 (600-1½)	NA
CIRCLING	960-1	527 (600-1)	1000-1½ 567 (600-1½)	NA

SC-2, 07 OCT 2021 to 04 NOV 2021

SC-2, 07 OCT 2021 to 04 NOV 2021