

JOOLS ONE ARRIVAL (RNAV)
(JOOLS.JOOLS1) 15JUN23

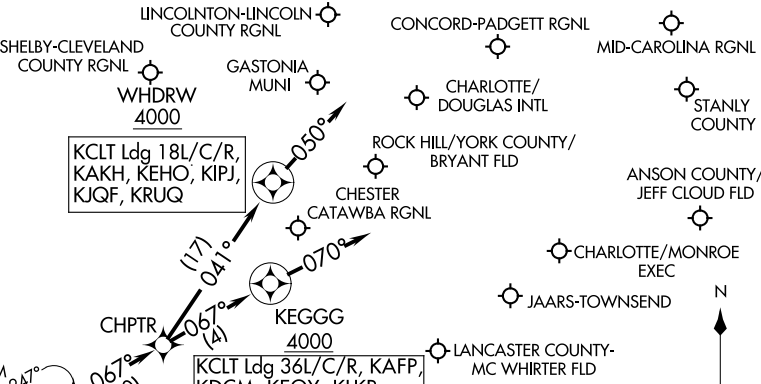
JOOLS ONE ARRIVAL (RNAV)
23166

AL-78 (FAA)

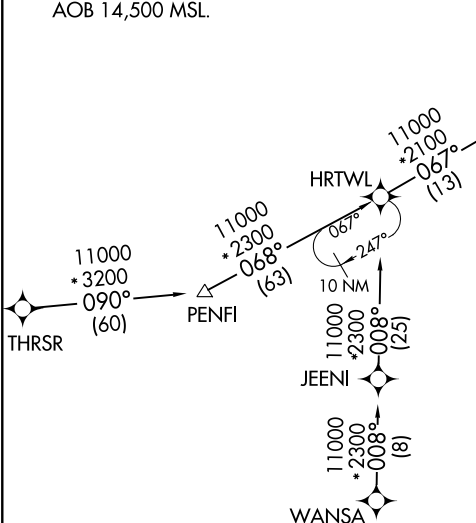
CHARLOTTE NORTH CAROLINA

CHARLOTTE APP CON
135.6 377.15
CLT D-ATIS ARR
121.15
JQF ATIS *
133.675

RNAV 1 - DME/DME/IRU or GPS.
RADAR required.



Use CAUTION: Parachute jumping 17 NM NE of
CHPTR, 3 NM radius KDCM (Chester-Catawba Rgnl),
AOB 14,500 MSL.



ARRIVAL ROUTE DESCRIPTION

THRSR TRANSITION (THRSR.JOOLS1)
WANSAN TRANSITION (WANSAN.JOOLS1)

- KCLT: From JOOLS on track 067° to CHPTR.
- LANDING RUNWAYS 18L/C/R: From CHPTR on track 041° to cross WHDRW at or above 4000, then on track 050°. Expect RADAR vectors to final approach course.
- LANDING RUNWAYS 36L/C/R: From CHPTR on track 067° to cross KEGGG at or above 4000, then on track 070°. Expect RADAR vectors to final approach course.
- LANDING KAKH/KRUQ/KEHO/KJQF/KIPJ: From JOOLS on track 067° to CHPTR, then on track 041° to cross WHDRW at or above 4000, then on track 050°. Expect RADAR vectors to final approach course.
- LANDING KDCM/KEQY/KUZA/KAFP/N52/KVUJ/KLKR: From JOOLS on track 067° to CHPTR, then on track 067° to cross KEGGG at or above 4000, then on track 070°. Expect RADAR vectors to final approach course.

NOTE: Chart not to scale.

CHARLOTTE NORTH CAROLINA

KABEE THREE ARRIVAL (RNAV)

CONCORD, NORTH CAROLINA

- CHARLOTTE APP CON 126.15 282.325
- CLT D-ATIS ARR 121.15
- JQF ATIS * 133.675
- RUQ AWOS-3 118.175
- SVH AWOS-3 119.225
- VUJ AWOS-3 128.175
- CONCORD TOWER * 134.65 (CTAF)
- STANLY TOWER * 126.275 (CTAF) 291.9

STATESVILLE
RGNL

MID-CAROLINA
RGNL

NASCR

STANLY
COUNTY

CONCORD-
PADGETT
RGNL

BIFFL

KABEE
Expect 15000

COPEL

FLORENCE
FLO

- NOTE: RADAR required.
- NOTE: RNAV 1.
- NOTE: DME/DME/IRU or GPS required.
- NOTE: Turbojet and turboprop aircraft only.

NOTE: Chart not to scale.

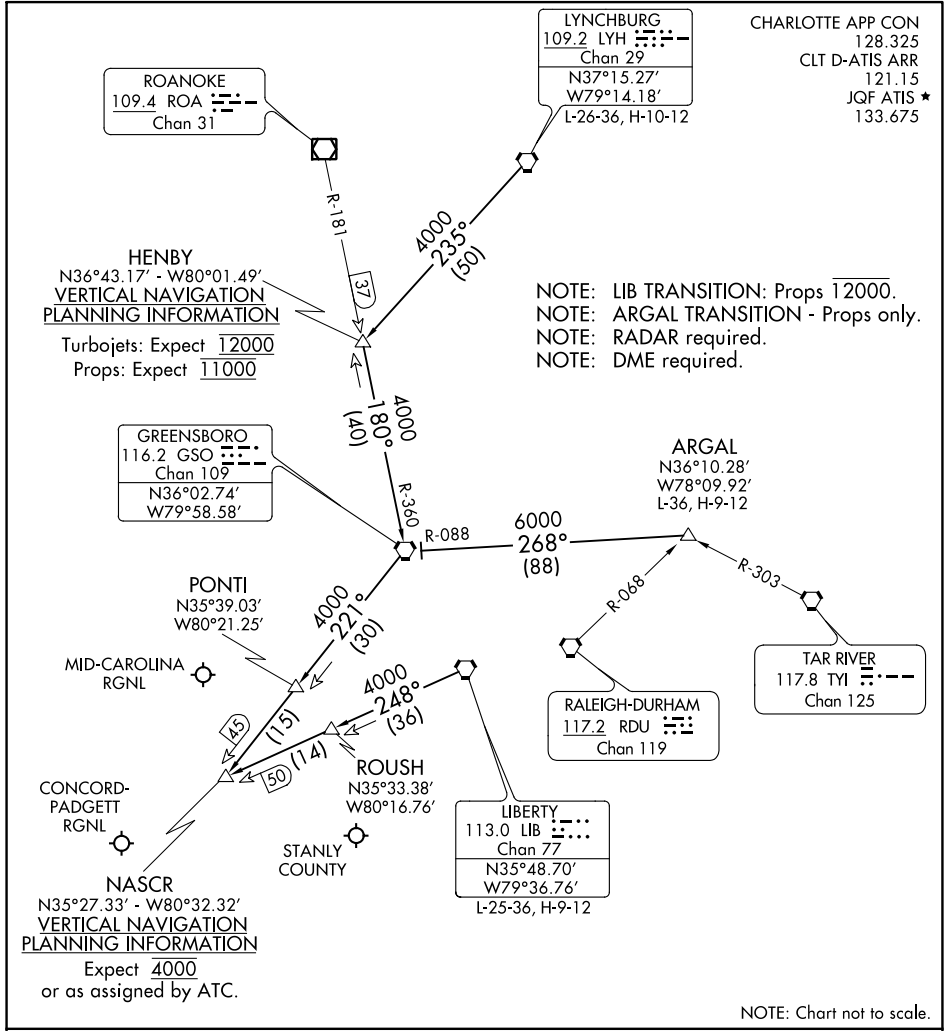
ARRIVAL ROUTE DESCRIPTION

FLORENCE TRANSITION (FLO.KABEE3)

From KABEE on track 338° to BIFFL, then on track 352° to NASCR, then on heading 346°, expect RADAR vectors to final approach course.

NASCR FOUR ARRIVAL

CONCORD, NORTH CAROLINA



NOTE: LIB TRANSITION: Props 12000.
 NOTE: ARGAL TRANSITION - Props only.
 NOTE: RADAR required.
 NOTE: DME required.

SE-2, 22 FEB 2024 to 21 MAR 2024

SE-2, 22 FEB 2024 to 21 MAR 2024

NOTE: Chart not to scale.

ARRIVAL DESCRIPTION

ARGAL TRANSITION (ARGAL.NASCR4): From over ARGAL INT on GSO R-088 to GSO VORTAC then on GSO R-221 to NASCR INT. Thence. . .

LIBERTY TRANSITION (LIB.NASCR4): From over LIB VORTAC on LIB R-248 to NASCR INT. Thence. . .

LYNCHBURG TRANSITION (LYH.NASCR4): From over LYH VORTAC on LYH R-235 to HENBY INT then on GSO R-360 to GSO VORTAC then on GSO R-221 to NASCR INT. Thence. . .

. . . from over NASCR INT. Expect RADAR vectors to final approach course.

NASCR FOUR ARRIVAL

CONCORD, NORTH CAROLINA