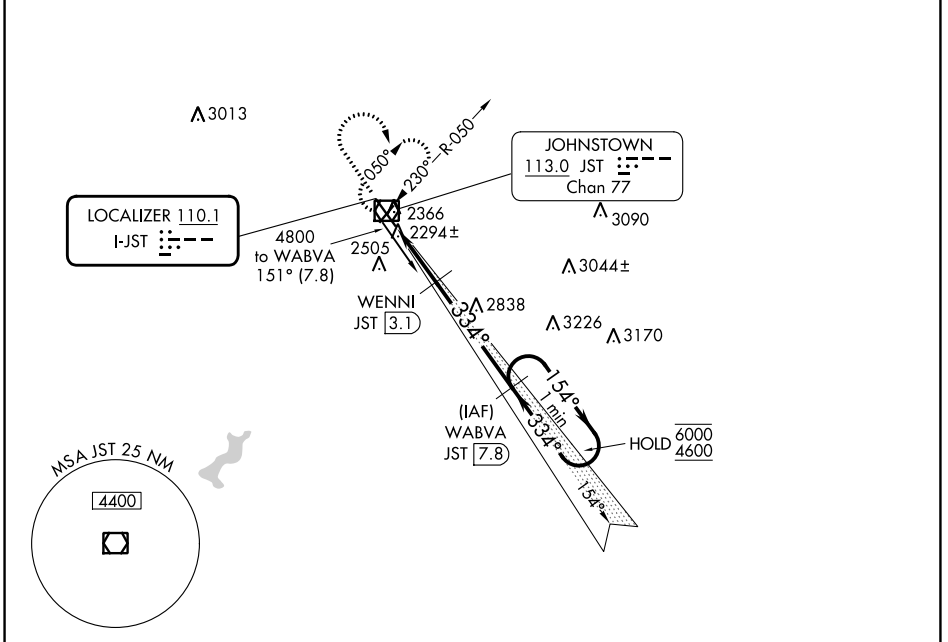


LOC I-JST 110.1	APP CRS 334°	Rwy Idg TDZE Apt Elev	6484 2281 2284
---------------------------	------------------------	-----------------------------	---

ILS or LOC RWY 33

JOHN MURTHA JOHNSTOWN/CAMBRIA COUNTY (JST)

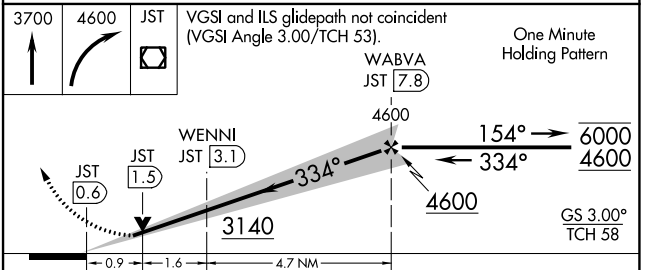
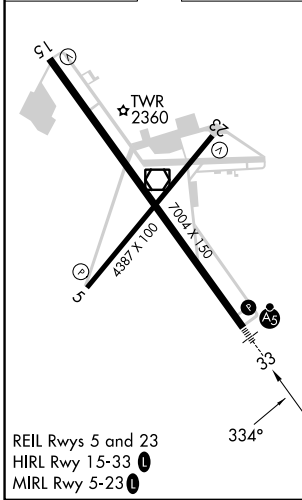
DME required. ▼ Glide slope unusable beyond 5 degrees left of course. ▲ For inop ALS, increase S-LOC 33 Cat C/D visibility to 7/8 SM.		MALSR	MISSED APPROACH: Climb to 3700 then climbing right turn to 4600 direct JST VOR/DME and hold, continue climb-in-hold to 4600.		
ATIS 118.325	JOHNSTOWN APP CON ★ 121.2 299.2	JOHNSTOWN TOWER ★ 125.75 (CTAF) ①	GND CON 121.6	CLNC DEL 126.85 235.775	UNICOM 122.95



NE-4, 22 FEB 2024 to 21 MAR 2024

NE-4, 22 FEB 2024 to 21 MAR 2024

ELEV 2284	D	TDZE 2281
-----------	----------	-----------



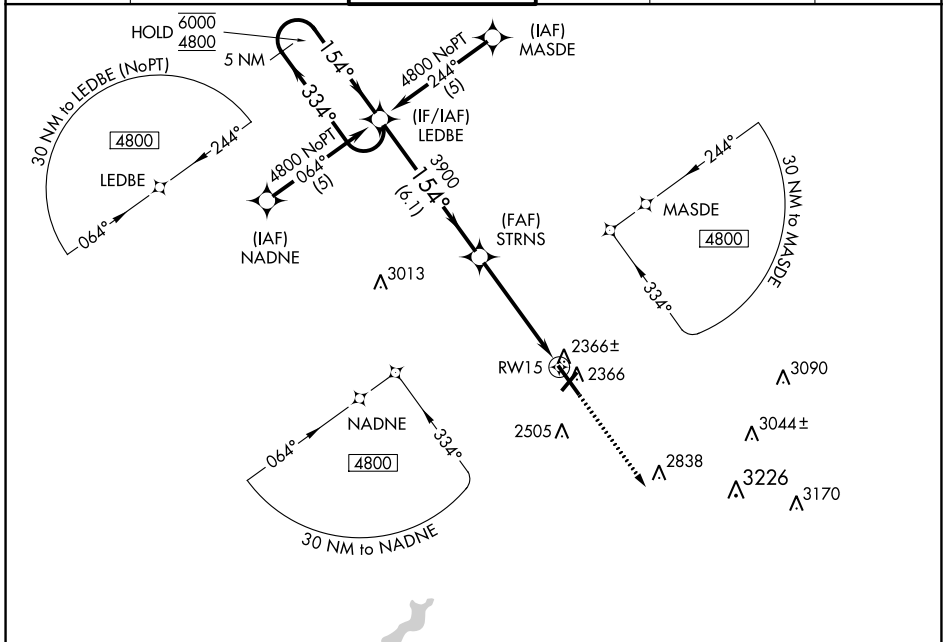
CATEGORY	A	B	C	D
S-ILS 33	2481-1/2	200 (200-1/2)		
S-LOC 33	2600-1/2	319 (400-1/2)		
C CIRCLING	2700-1 416 (500-1)	2880-1 596 (600-1)	2880-1 1/2 596 (600-1 1/2)	3000-2 1/4 716 (800-2 1/4)

WAAS CH 53513 W15A	APP CRS 154°	Rwy Idg TDZE Apt Elev	6698 2276 2284
--	------------------------	-----------------------------	---

RNAV (GPS) RWY 15

JOHN MURTHA JOHNSTOWN/CAMBRIA COUNTY (JST)

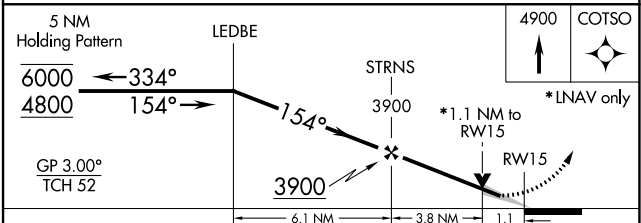
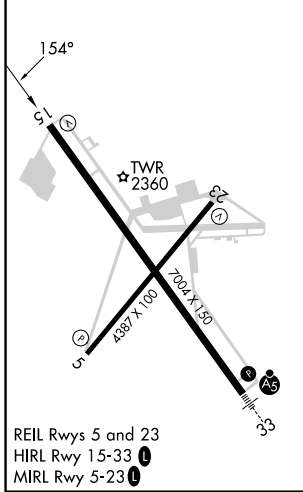
RNP APCH - GPS.		MISSED APPROACH: Climb to 4900 direct COTSO and hold.			
Baro-VNAV NA.					
ATIS 118.325	JOHNSTOWN APP CON ★ 121.2 299.2	JOHNSTOWN TOWER ★ 125.75 (CTAF)	GND CON 121.6	CLNC DEL 126.85 235.775	UNICOM 122.95



NE-4, 22 FEB 2024 to 21 MAR 2024

NE-4, 22 FEB 2024 to 21 MAR 2024

ELEV 2284	D	TDZE 2276
-----------	----------	-----------



CATEGORY	A	B	C	D
LPV DA	2526-3/4 250 (300-3/4)			
LNNAV/VNAV DA	2595-1 319 (400-1)			
LNNAV MDA	2680-1	404 (400-1)	2680-1 1/8 404 (400-1 1/8)	2680-1 1/4 404 (400-1 1/4)
C CIRCLING	2700-1 416 (500-1)	2880-1 596 (600-1)	2880-1 1/2 596 (600-1 1/2)	3000-2 1/4 716 (800-2 1/4)

WAAS CH 53429 W23A	APP CRS 229°	Rwy Idg TDZE Apt Elev	4387 2284 2284
--	------------------------	-----------------------------	---

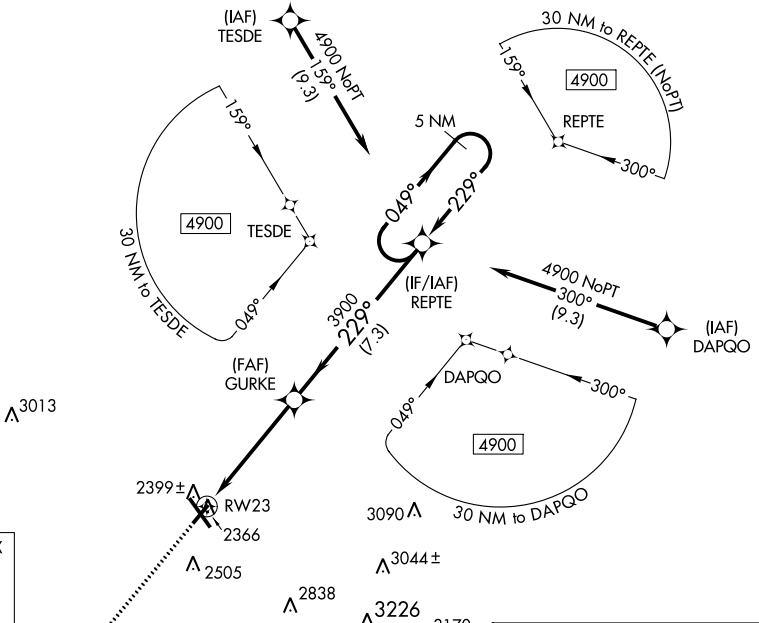
RNAV (GPS) RWY 23

JOHN MURTHA JOHNSTOWN/CAMBRIA COUNTY (JST)

T For uncompensated Baro-VNAV systems, LNAV/VNAV NA below -19°C (-2°F) or above 29°C (84°F). When local altimeter setting not received, procedure NA.
A DME/DME RNP-0.3 NA. Rwy 23 helicopter visibility reduction below ¾ SM NA.

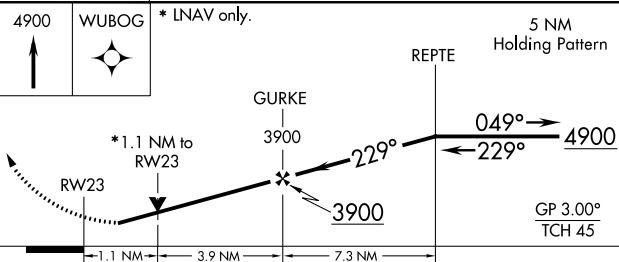
MISSED APPROACH: Climb to 4900 direct WUBOG and hold.

ATIS 118.325	JOHNSTOWN APP CON * 121.2 299.2	JOHNSTOWN TOWER * 125.75 (CTAF) 0	GND CON 121.6	CLNC DEL 126.85 235.775	UNICOM 122.95
------------------------	---	---	-------------------------	-----------------------------------	-------------------------

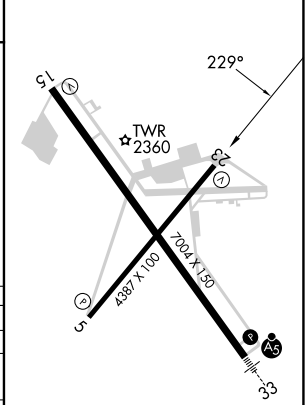


NE-4, 22 FEB 2024 to 21 MAR 2024

NE-4, 22 FEB 2024 to 21 MAR 2024



ELEV 2284	D	TDZE 2284
-----------	----------	-----------



CATEGORY	A	B	C	D
LPV DA		2534-¾	250 (300-¾)	
LNAV/VNAV DA		2584-1	300 (300-1)	
LNAV MDA		2660-1	376 (400-1)	
C CIRCLING	2700-1 416 (500-1)	2880-1 596 (600-1)	2880-1½ 596 (600-1½)	3000-2¼ 716 (800-2¼)

REIL Rwy 5 and 23
HIRL Rwy 15-33 **0**
MIRL Rwy 5-23 **0**

RNAV (GPS) RWY 23

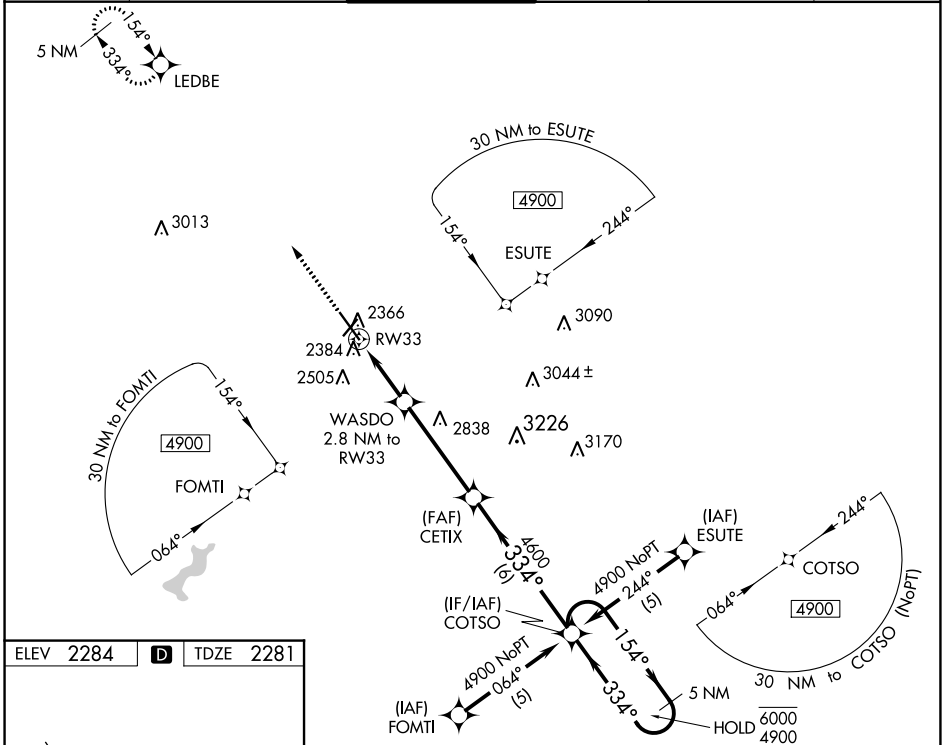
WAAS CH 61113 W33A	APP CRS 334°	Rwy Idg TDZE Apt Elev	6484 2281 2284
--	------------------------	-----------------------------	---

RNAV (GPS) RWY 33

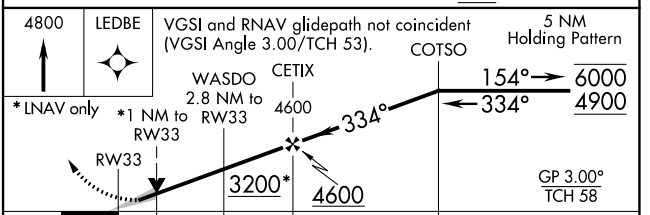
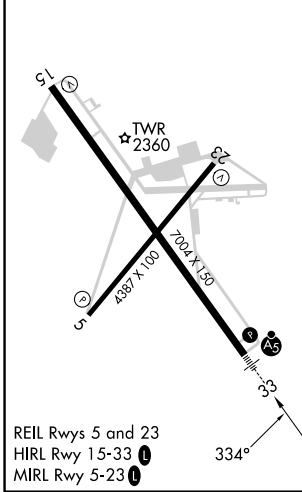
JOHN MURTHA JOHNSTOWN/CAMBRIA COUNTY (JST)

RNP APCH.	MALSR	MISSED APPROACH: Climb to 4800 direct LEDBE and hold.
<p>▼ Inop table does not apply to LNAV Cat D. For uncompensated Baro-VNAV systems, LNAV/VNAV NA below -19°C or above 54°C. For inop ALS increase LNAV/VNAV all Cats visibility to ½ SM and LNAV Cat C visibility to 1 SM.</p>		

ATIS 118.325	JOHNSTOWN APP CON ★ 121.2 299.2	JOHNSTOWN TOWER ★ 125.75 (CTAF) 0	GND CON 121.6	CLNC DEL 126.85 235.775	UNICOM 122.95
------------------------	---	---	-------------------------	-----------------------------------	-------------------------



ELEV 2284	D	TDZE 2281
-----------	----------	-----------



CATEGORY	A	B	C	D
LPV DA	2481-½		200 (200-½)	
LNAV/VNAV DA	2552-½		271 (300-½)	
LNAV MDA	2640-½	359 (400-½)	2640-⅝ 359 (400-⅝)	2640-1 359 (400-1)
C CIRCLING	2700-1 416 (500-1)	2880-1 596 (600-1)	2880-1½ 596 (600-½)	3000-2¼ 716 (800-2¼)

NE-4, 22 FEB 2024 to 21 MAR 2024

NE-4, 22 FEB 2024 to 21 MAR 2024

WAAS CH 61029 W05A	APP CRS 049°	Rwy Idg TDZE Apt Elev	4387 2283 2284
--	------------------------	-----------------------------	---

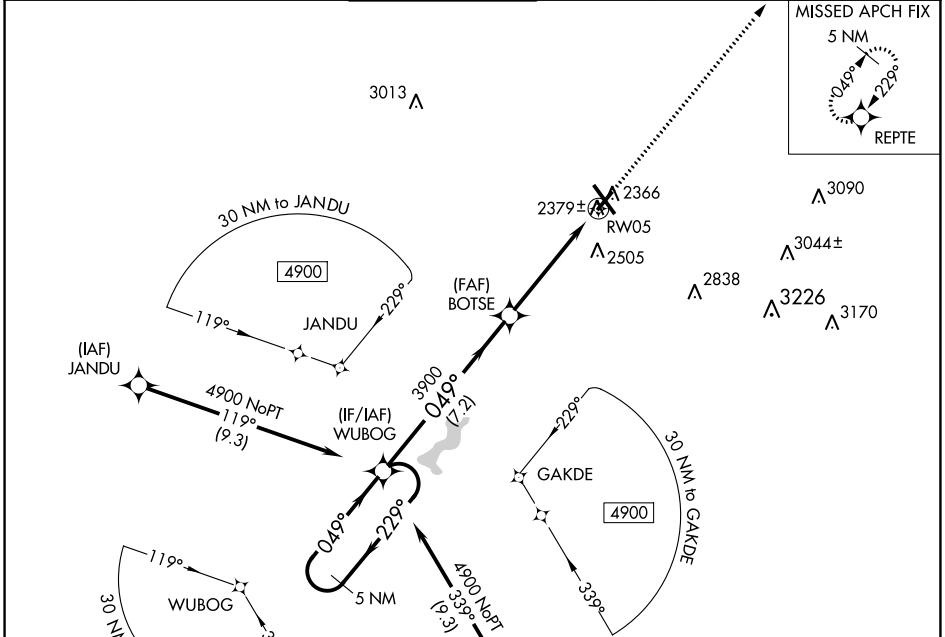
RNAV (GPS) RWY 5

JOHN MURTHA JOHNSTOWN/CAMBRIA COUNTY (JST)

▼ When local altimeter setting not received, procedure NA. For uncompensated Baro-VNAV systems, LNAV/VNAV NA below -1.9°C (-2°F) or above 29°C (84°F). DME/DME RNP-0.3 NA. Rwy 5 helicopter visibility reduction below 3/4 SM NA.

MISSED APPROACH: Climb to 4900 direct REPTE and hold.

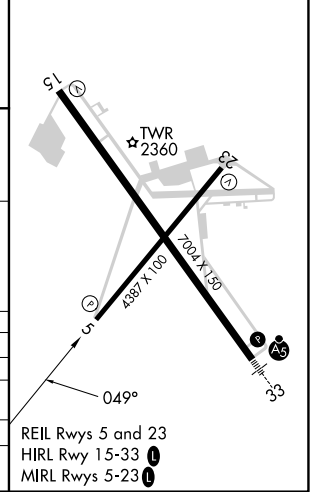
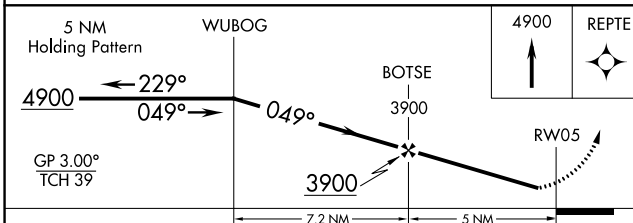
ATIS 118.325	JOHNSTOWN APP CON ★ 121.2 299.2	JOHNSTOWN TOWER ★ 125.75 (CTAF) 0	GND CON 121.6	CLNC DEL 126.85 235.775	UNICOM 122.95
------------------------	---	---	-------------------------	-----------------------------------	-------------------------



NE-4, 22 FEB 2024 to 21 MAR 2024

NE-4, 22 FEB 2024 to 21 MAR 2024

ELEV 2284	D	TDZE 2283
-----------	----------	-----------



CATEGORY	A	B	C	D
LPV DA		2533-1	250 (300-1)	
LNAV/VNAV DA		2573-1	290 (300-1)	
LNAV MDA		2640-1	357 (400-1)	
C CIRCLING	2700-1 416 (500-1)	2880-1 596 (600-1)	2880-1½ 596 (600-1½)	3000-2¼ 716 (800-2¼)

RNAV (GPS) RWY 5

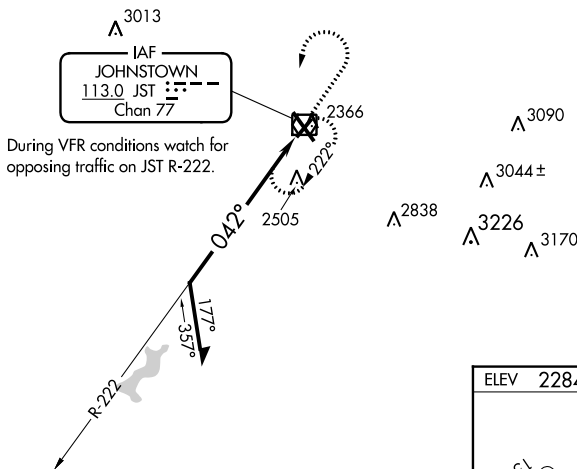
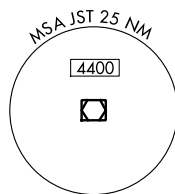
VOR/DME JST 113.0 Chan 77	APP CRS 042°	Rwy Idg TDZE Apt Elev 4387 2284 2284
--	------------------------	--

VOR RWY 5

JOHN MURTHA JOHNSTOWN/CAMBRIA COUNTY (JST)

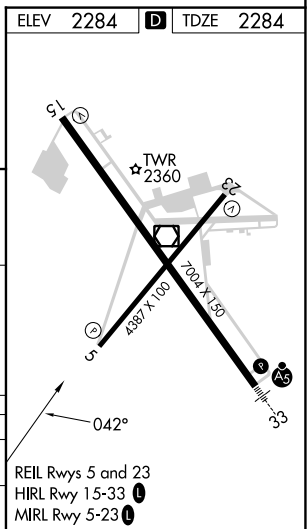
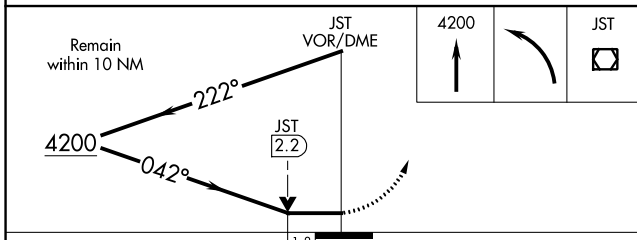
<p>▼ Rwy 5 helicopter visibility reduction below 3/4 SM NA.</p> <p>▲</p>	<p>MISSED APPROACH: Climb to 4200 then left turn direct JST VOR/DME and hold.</p>
--	---

ATIS 118.325	JOHNSTOWN APP CON * 121.2 299.2	JOHNSTOWN TOWER * 125.75 (CTAF) 0	GND CON 121.6	CLNC DEL 126.85 235.775	UNICOM 122.95
------------------------	---	---	-------------------------	-----------------------------------	-------------------------



NE-4, 22 FEB 2024 to 21 MAR 2024

NE-4, 22 FEB 2024 to 21 MAR 2024



CATEGORY	A	B	C	D
S-5	2880-1 596 (600-1)		2880-1 3/4 596 (600-1 3/4)	
C CIRCLING	2880-1 596 (600-1)		2880-1 3/4 596 (600-1 3/4)	3000-2 1/4 716 (800-2 1/4)

VOR RWY 5

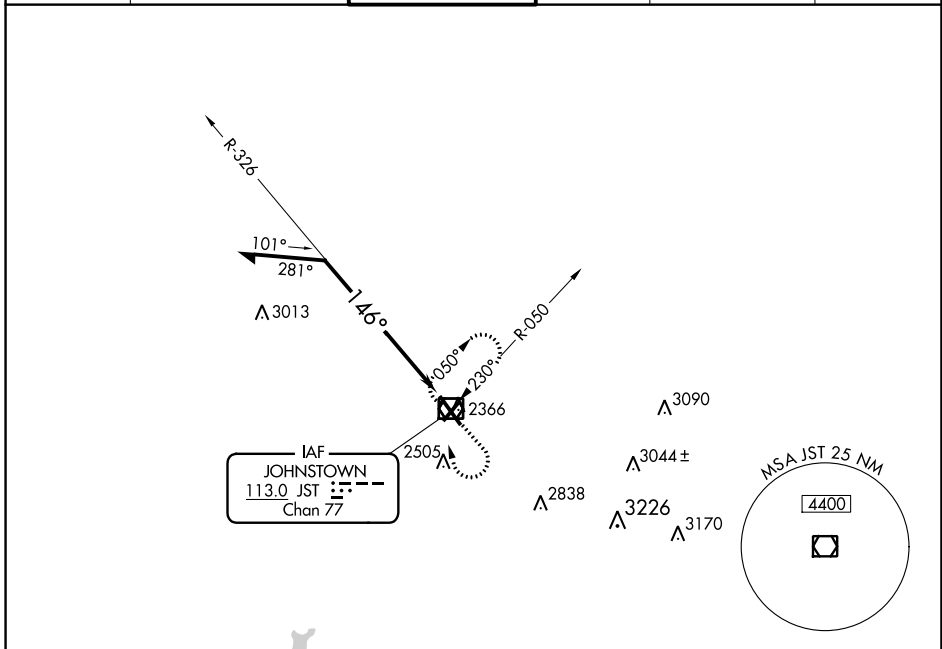
VOR/DME JST 113.0 Chan 77	APP CRS 146°	Rwy Idg TDZE Apt Elev	6698 2276 2284
--	------------------------	-----------------------------	---

VOR Y RWY 15

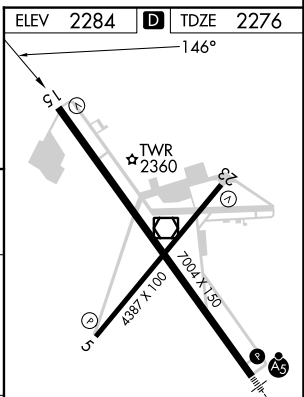
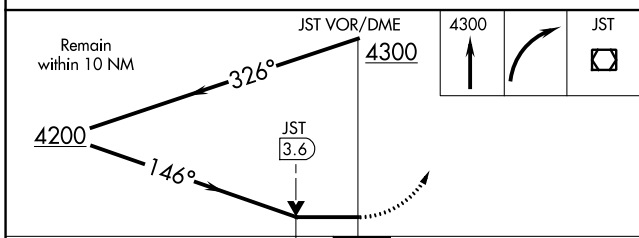
JOHN MURTHA JOHNSTOWN/CAMBRIA COUNTY (JST)

		MISSED APPROACH: Climb to 4300 then right turn direct JST VOR/DME and hold.			
--	--	---	--	--	--

ATIS 118.325	JOHNSTOWN APP CON ★ 121.2 299.2	JOHNSTOWN TOWER ★ 125.75 (CTAF) 0	GND CON 121.6	CLNC DEL 126.85 235.775	UNICOM 122.95
------------------------	---	---	-------------------------	-----------------------------------	-------------------------



ELEV 2284	D TDZE 2276
-----------	--------------------



CATEGORY	A	B	C	D
S-15	3300-1¼ 1024 (1100-1¼)	3300-1½ 1024 (1100-1½)	3300-3	1024 (1100-3)
C CIRCLING	3300-1¼ 1016 (1100-1¼)	3300-1½ 1016 (1100-1½)	3300-3	1016 (1100-3)

REIL Rwy 5 and 23
HIRL Rwy 15-33 **0**
MIRL Rwy 5-23 **0**

VOR Y RWY 15

NE-4, 22 FEB 2024 to 21 MAR 2024

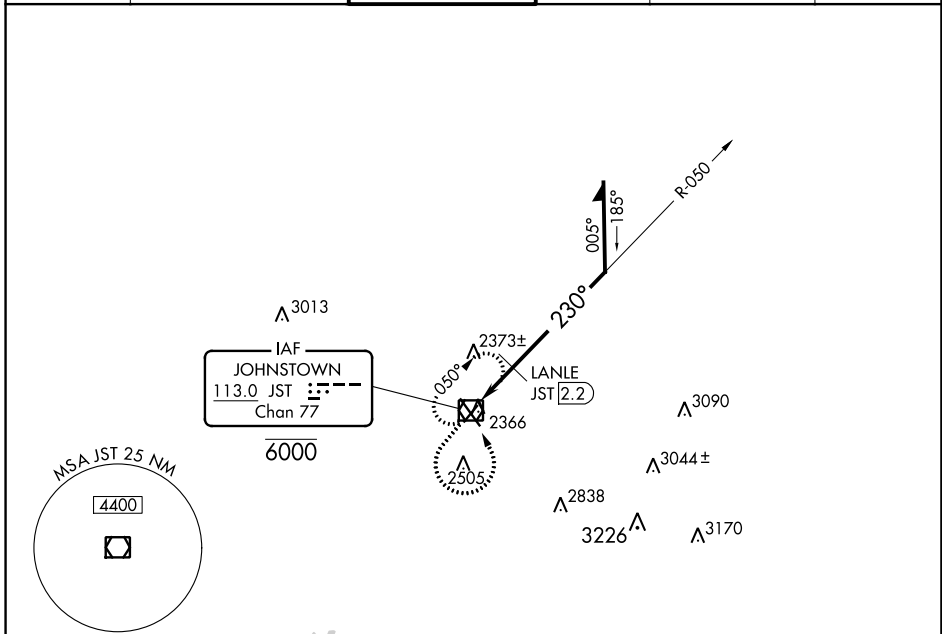
NE-4, 22 FEB 2024 to 21 MAR 2024

VOR/DME JST 113.0 Chan 77	APP CRS 230°	Rwy Idg TDZE Apt Elev	4387 2284 2284
--	------------------------	-----------------------------	---

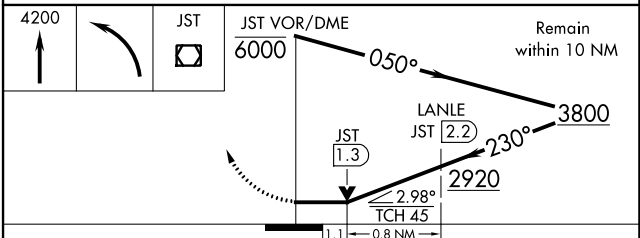
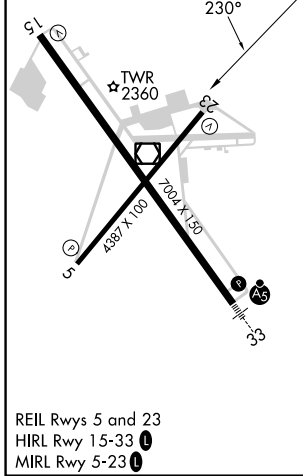
VOR Y RWY 23

JOHN MURTHA JOHNSTOWN/CAMBRIA COUNTY (JST)

Rwy 23 helicopter visibility reduction below 3/4 SM NA.			MISSED APPROACH: Climb to 4200 then left turn direct JST VOR/DME and hold.		
ATIS 118.325	JOHNSTOWN APP CON * 121.2 299.2	JOHNSTOWN TOWER * 125.75 (CTAF) 0	GND CON 121.6	CLNC DEL 126.85 235.775	UNICOM 122.95



ELEV 2284	D	TDZE 2284
-----------	----------	-----------



CATEGORY	A	B	C	D
S-23	2920-1	636 (700-1)	2920-1 ³ / ₄ 636 (700-1 ³ / ₄)	2920-2 636 (700-2)
C CIRCLING	2920-1	636 (700-1)	2920-1 ³ / ₄ 636 (700-1 ³ / ₄)	3000-2 ¹ / ₄ 716 (800-2 ¹ / ₄)
LANLE FIX MINIMUMS				
S-23	2660-1 376 (400-1)			2660-1 ¹ / ₄ 376 (400-1 ¹ / ₄)
C CIRCLING	2700-1 416 (500-1)	2880-1 596 (600-1)	2880-1 ¹ / ₂ 596 (600-1 ¹ / ₂)	3000-2 ¹ / ₄ 716 (800-2 ¹ / ₄)

VOR Y RWY 23

NE-4, 22 FEB 2024 to 21 MAR 2024

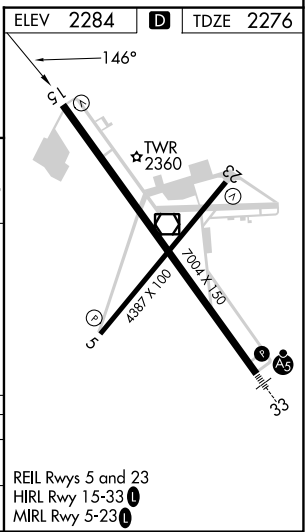
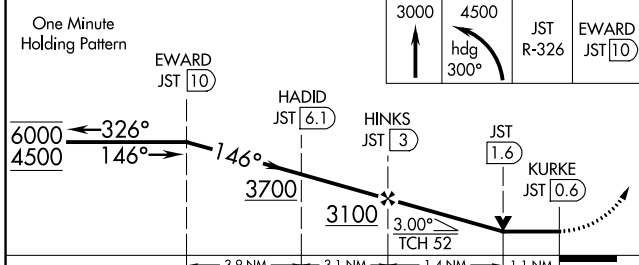
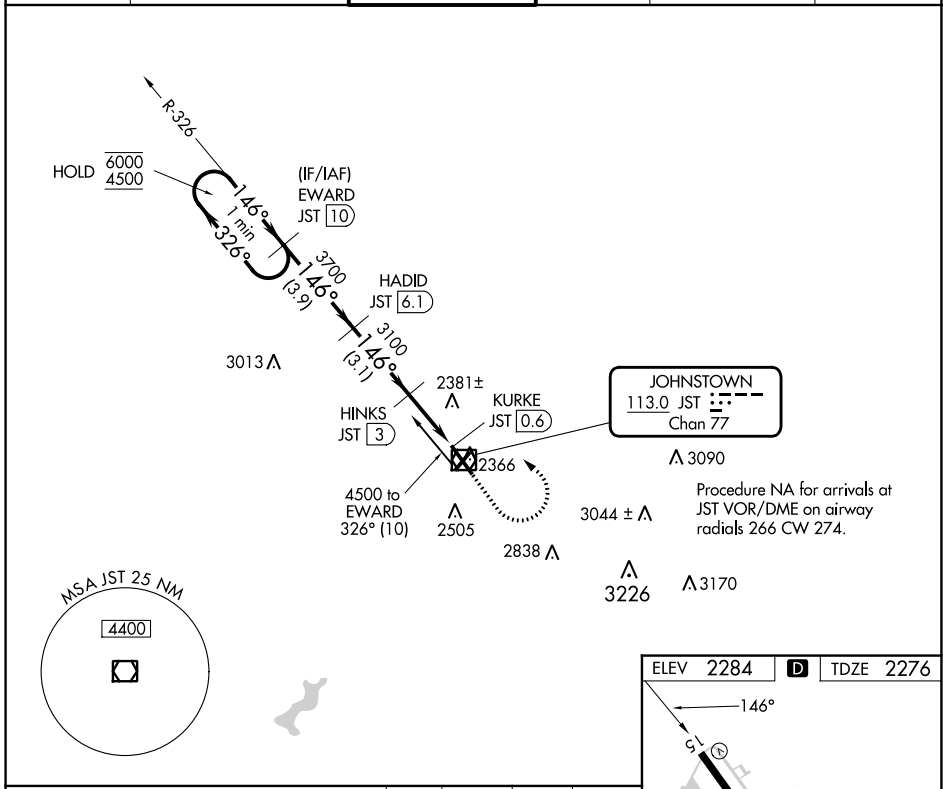
NE-4, 22 FEB 2024 to 21 MAR 2024

VOR/DME JST 113.0 Chan 77	APP CRS 146°	Rwy Idg TDZE Apt Elev	6698 2276 2284
---	------------------------	-----------------------------	---

VOR Z RWY 15

JOHN MURTHA JOHNSTOWN/CAMBRIA COUNTY (JST)

DME required.		MISSED APPROACH: Climb to 3000 then climbing left turn to 4500 on heading 300° and JST VOR/DME R-326 to EWARD /10 DME and hold.			
ATIS 118.325	JOHNSTOWN APP CON * 121.2 299.2	JOHNSTOWN TOWER * 125.75 (CTAF) 0	GND CON 121.6	CLNC DEL 126.85 235.775	UNICOM 122.95



CATEGORY	A	B	C	D
S-15	2660-1	384 (400-1)	2660-1 1/8	384 (400-1 1/8)
CIRCLING	2700-1 416 (500-1)	2880-1 596 (600-1)	2880-1 1/2 596 (600-1 1/2)	3000-2 1/4 716 (800-2 1/4)

REIL Rwys 5 and 23
HIRL Rwy 15-33
MIRL Rwy 5-23

VOR Z RWY 15

NE-4, 22 FEB 2024 to 21 MAR 2024

NE-4, 22 FEB 2024 to 21 MAR 2024

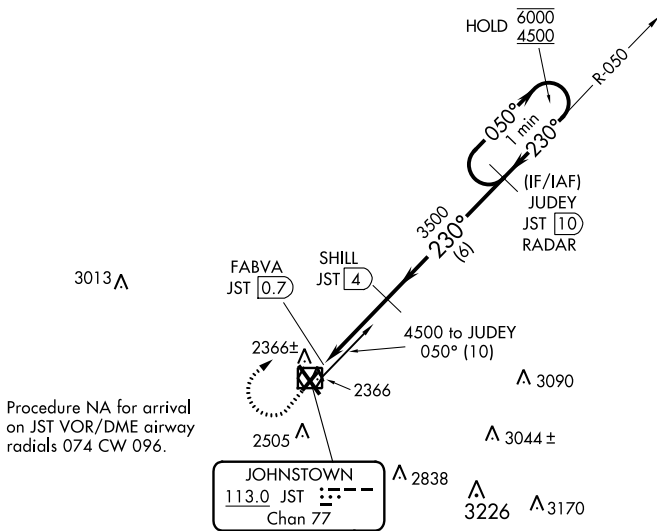
VOR/DME JST 113.0 Chan 77	APP CRS 230°	Rwy Idg TDZE Apt Elev	4387 2284 2284
---	------------------------	-----------------------------	---

VOR Z RWY 23

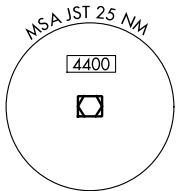
JOHN MURTHA JOHNSTOWN/CAMBRIA COUNTY (JST)

DME required.		MISSED APPROACH: Climb to 3000 then climbing right turn to 4500 on heading 075° and JST VOR/DME R-050 to JUDEY/JST 10 DME/RADAR and hold.	
▼ ▲ Rwy 23 helicopter visibility reduction below ¾ SM NA.			

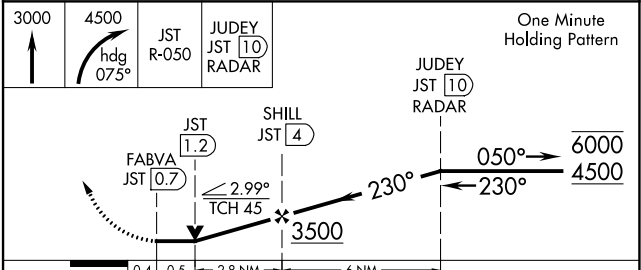
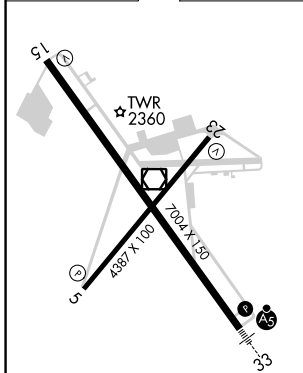
ATIS 118.325	JOHNSTOWN APP CON ★ 121.2 299.2	JOHNSTOWN TOWER ★ 125.75 (CTAF) 0	GND CON 121.6	CLNC DEL 126.85 235.775	UNICOM 122.95
------------------------	---	--	-------------------------	-----------------------------------	-------------------------



JOHNSTOWN
113.0 JST
Chan 77



ELEV 2284	D	TDZE 2284
-----------	----------	-----------



CATEGORY	A	B	C	D
S-23	2620-1 336 (400-1)			
C CIRCLING	2700-1 416 (500-1)	2880-1 596 (600-1)	2880-1½ 596 (600-1½)	3000-2¼ 716 (800-2¼)

REIL Rws 5 and 23
HIRL Rwy 15-33 **0**
MIRL Rwy 5-23 **0**

VOR Z RWY 23

NE-4, 22 FEB 2024 to 21 MAR 2024

NE-4, 22 FEB 2024 to 21 MAR 2024