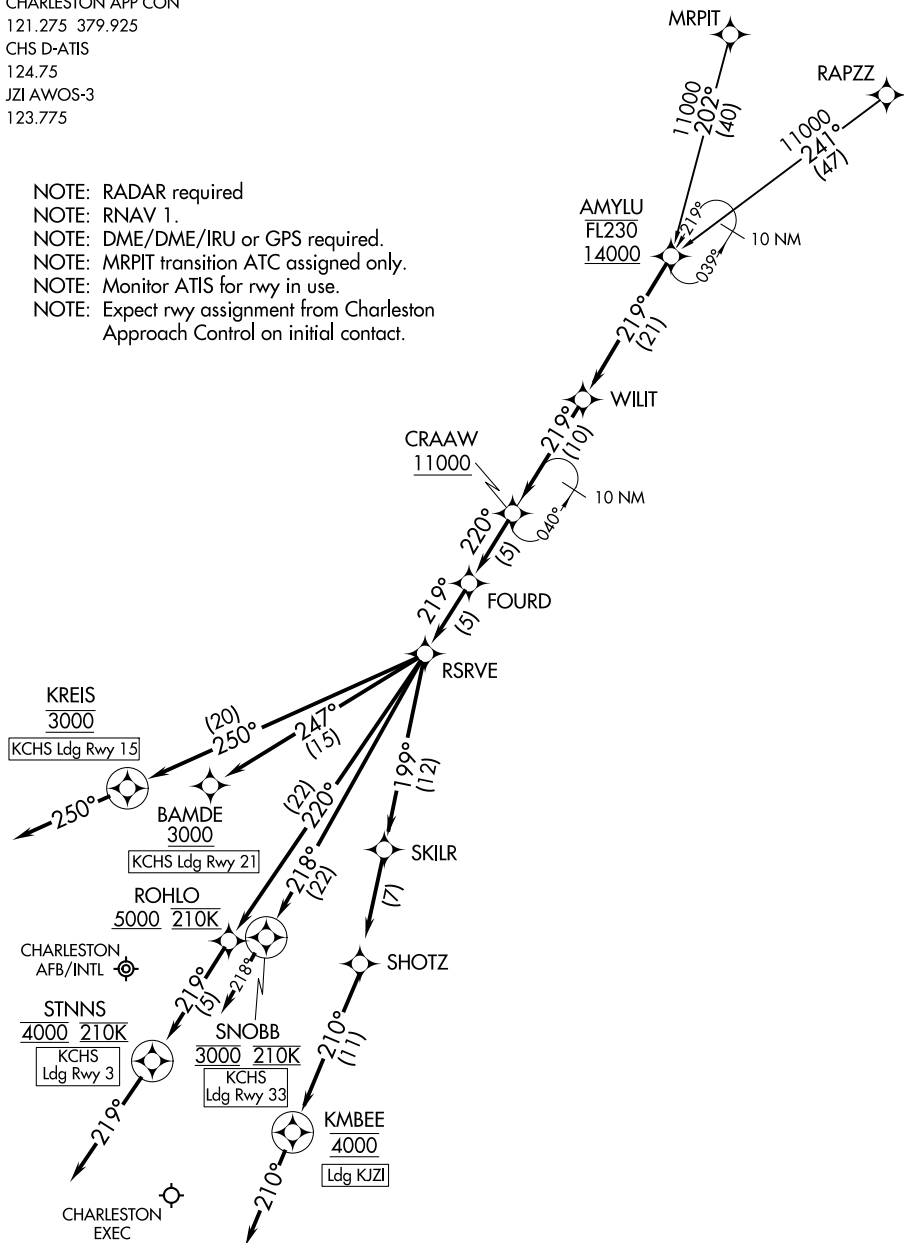


AMYLU THREE ARRIVAL (RNAV)

CHARLESTON, SOUTH CAROLINA

CHARLESTON APP CON
 121.275 379.925
 CHS D-ATIS
 124.75
 JZI AWOS-3
 123.775

- NOTE: RADAR required
- NOTE: RNAV 1.
- NOTE: DME/DME/IRU or GPS required.
- NOTE: MRPIT transition ATC assigned only.
- NOTE: Monitor ATIS for rwy in use.
- NOTE: Expect rwy assignment from Charleston Approach Control on initial contact.



(NARRATIVE ON FOLLOWING PAGE)

NOTE: Chart not to scale.

AMYLU THREE ARRIVAL (RNAV)

CHARLESTON, SOUTH CAROLINA

ARRIVAL ROUTE DESCRIPTION

MRPIT TRANSITION (MRPIT.AMYLU3):

RAPZZ TRANSITION (RAPZZ.AMYLU3):

KCHS: From AMYLU on track 219° to WILIT, then on track 219° to cross CRAAW at or above 11000, then on track 220° to FOURD, then on track 219° to RSRVE.

LANDING KCHS RUNWAY 3:

From RSRVE on track 220° to cross ROHLO at or above 5000 and at 210K, then on track 219° to cross STNNS at 4000 and at 210K, then on heading 219° or as assigned by ATC. Expect RNP RWY 3 approach.

Non-RNP aircraft: Expect RADAR vectors to final approach course.

LANDING KCHS RUNWAY 15:

From RSRVE on track 250° to cross KREIS at 3000, then on heading 250° or as assigned by ATC. Expect RNP RWY 15 approach.

Non-RNP aircraft: Expect RADAR vectors to final approach course.

LANDING KCHS RUNWAY 21:

From RSRVE on track 247° to cross BAMDE at or above 3000.

Expect RNAV RWY 21 approach.

LANDING KCHS RUNWAY 33:

From RSRVE on track 218° to cross SNOBB at 3000 and at 210K, then on heading 218° or as assigned by ATC. Expect RNP RWY 33 approach.

Non-RNP aircraft: Expect RADAR vectors to final approach course.

LANDING KJZI:

From RSRVE on track 199° to SKILR, then on track 199° to SHOTZ, then on track 210° to cross KMBEE at 4000, then on heading 210° or as assigned by ATC.

Expect RADAR vectors to final approach course.

SE-2, 22 FEB 2024 to 21 MAR 2024

SE-2, 22 FEB 2024 to 21 MAR 2024

BAGGY THREE ARRIVAL (RNAV)
(BAGGY.BAGGY3) 27JAN22

(BAGGY.BAGGY3) 23222
BAGGY THREE ARRIVAL (RNAV)

AL-76 (FAA)

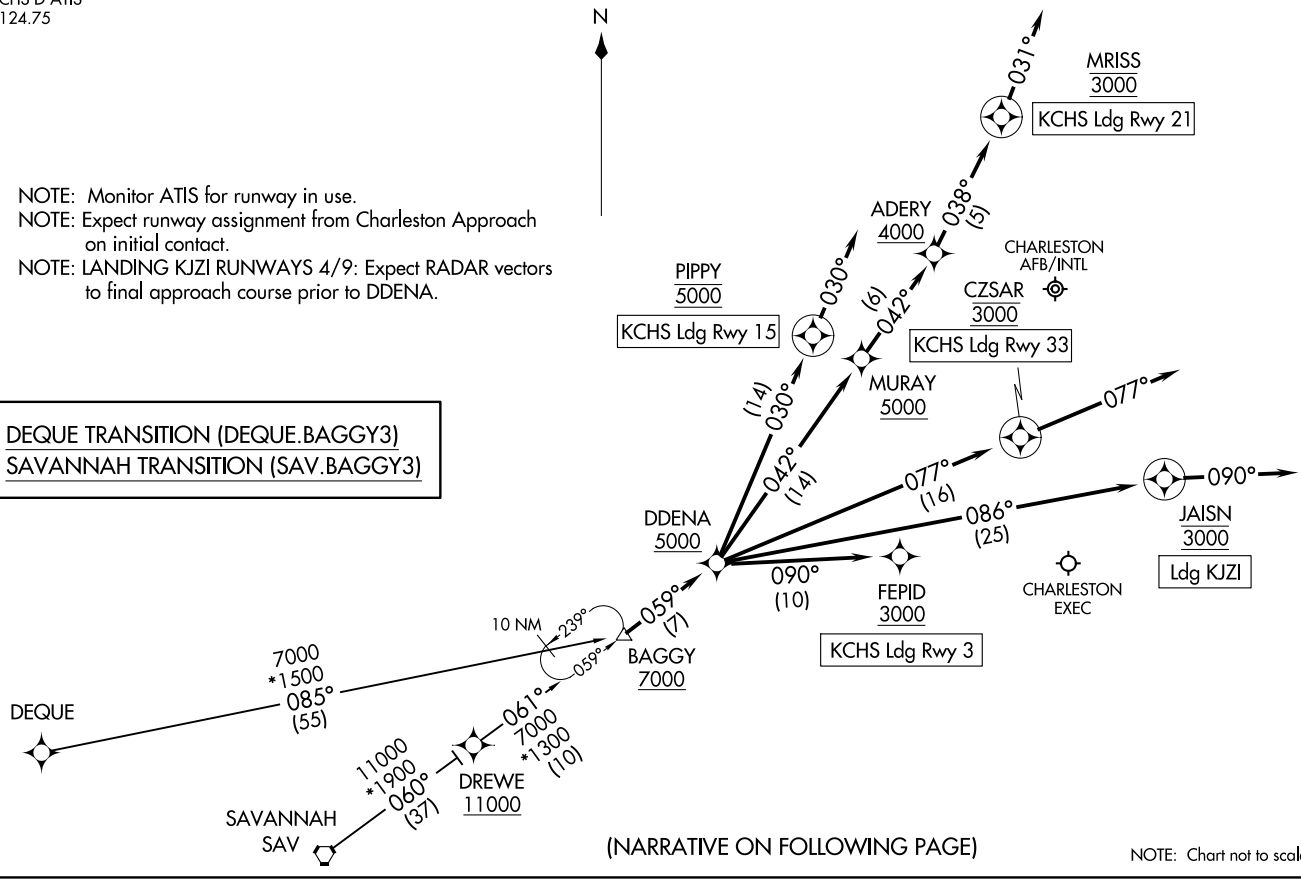
CHARLESTON, SOUTH CAROLINA

RNAV 1 - DME/DME/IRU or GPS.
RADAR required.

CHARLESTON APP CON
120.7 306.925
CHS D-ATIS
124.75

NOTE: Monitor ATIS for runway in use.
NOTE: Expect runway assignment from Charleston Approach on initial contact.
NOTE: LANDING KJZI RUNWAYS 4/9: Expect RADAR vectors to final approach course prior to DDENA.

DEQUE TRANSITION (DEQUE.BAGGY3)
SAVANNAH TRANSITION (SAV.BAGGY3)



(NARRATIVE ON FOLLOWING PAGE)

NOTE: Chart not to scale.

CHARLESTON, SOUTH CAROLINA

ARRIVAL ROUTE DESCRIPTION

KCHS: From BAGGY on track 059° to cross DDENA at or above 5000.

LANDING KCHS RUNWAY 3: From DDENA on track 090° to cross FEPID at or above 3000. Expect RNAV (RNP) RWY 3 approach.
Non-RNP aircraft: Expect RADAR vectors to final approach course.

LANDING KCHS RUNWAY 15: From DDENA on track 030° to cross PIPPY at 5000, then on heading 030°. Expect RNAV (RNP) RWY 15 approach.
Non-RNP aircraft: Expect RADAR vectors to final approach course.

LANDING KCHS RUNWAY 21: From DDENA on track 042° to cross MURAY at or above 5000, then on track 042° to cross ADERY at or above 4000, then on track 038° to cross MARISS at 3000 then on heading 031°. Expect RNAV (RNP) RWY 21 approach. Non-RNP aircraft: Expect RADAR vectors to final approach course.

LANDING KCHS RUNWAY 33: From DDENA on track 077° to cross CZSAR at 3000, then on heading 077°. Expect RNAV (RNP) RWY 33 approach.
Non-RNP aircraft: Expect RADAR vectors to final approach course.

LANDING KJZI RUNWAYS 4, 9: From BAGGY on track 059° to cross DDENA at or above 5000, then on track 086° to cross JAISN at 3000, then on heading 090°. Expect RADAR vectors to final approach course prior to DDENA.

LANDING KJZI RUNWAY 27: From BAGGY on track 059° to cross DDENA at or above 5000, then on track 086° to cross JAISN at 3000, then on heading 090°. Expect RADAR vectors to final approach course after JAISN.

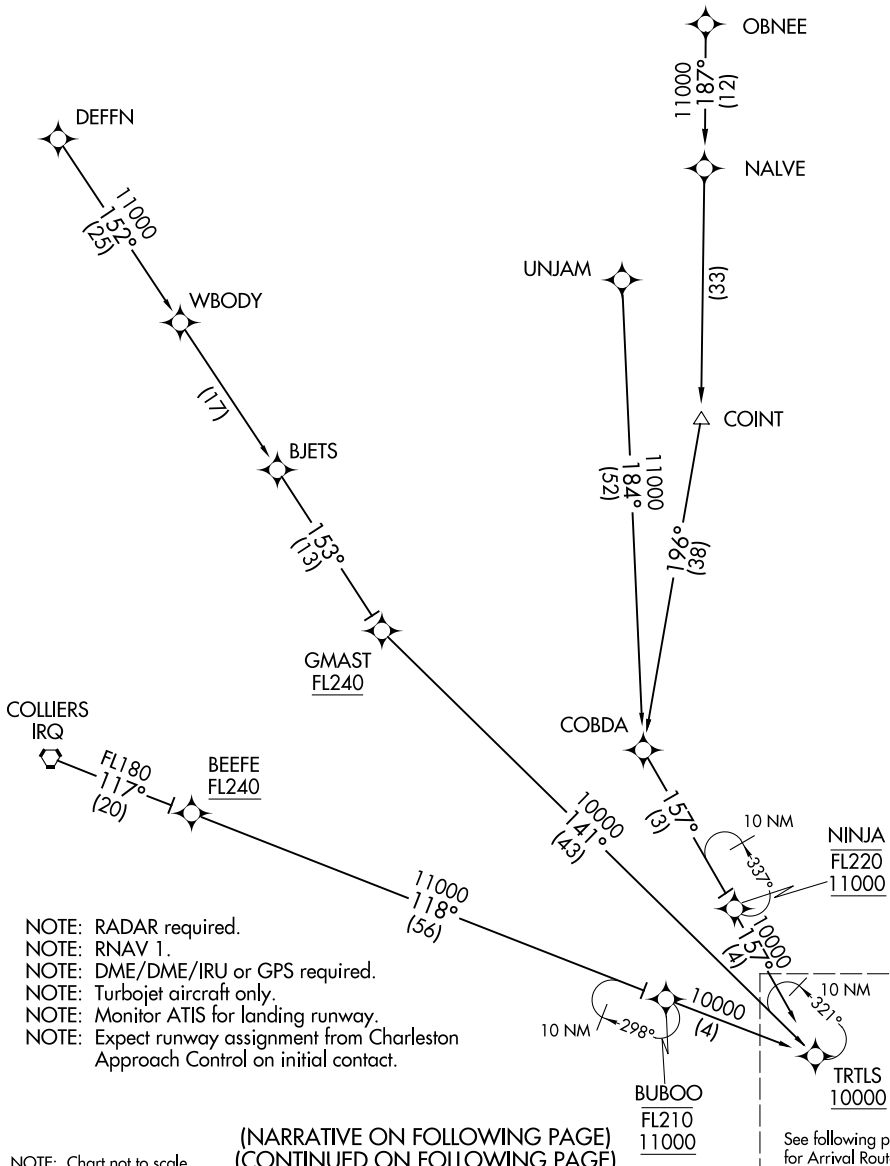
SE-2, 22 FEB 2024 to 21 MAR 2024

SE-2, 22 FEB 2024 to 21 MAR 2024

OSPRI SEVEN ARRIVAL (RNAV) Transition Routes CHARLESTON, SOUTH CAROLINA

CHARLESTON APP CON
 120.7 306.925
 CHS D-ATIS
 124.75
 JZI AWOS-3
 123.775

COLLIERS TRANSITION (IRQ.OSPRI7)
DEFFN TRANSITION (DEFFN.OSPRI7)
OBNEE TRANSITION (OBNEE.OSPRI7)
UNJAM TRANSITION (UNJAM.OSPRI7)



- NOTE: RADAR required.
- NOTE: RNAV 1.
- NOTE: DME/DME/IRU or GPS required.
- NOTE: Turbojet aircraft only.
- NOTE: Monitor ATIS for landing runway.
- NOTE: Expect runway assignment from Charleston Approach Control on initial contact.

(NARRATIVE ON FOLLOWING PAGE)
 (CONTINUED ON FOLLOWING PAGE)

NOTE: Chart not to scale.

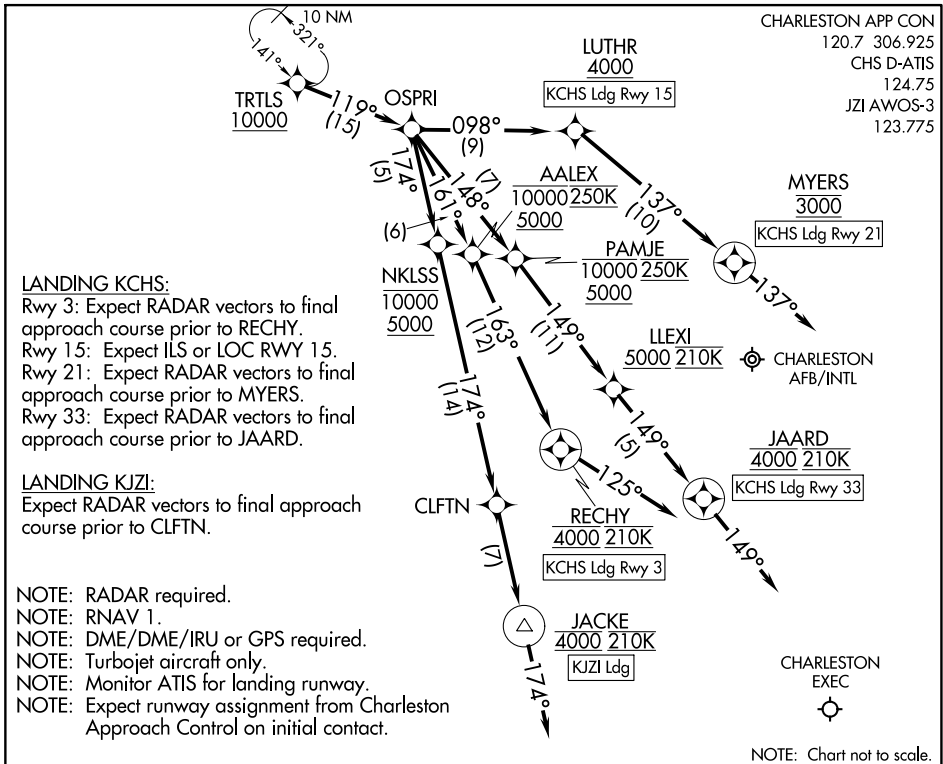
See following page for Arrival Routes.

SE-2, 22 FEB 2024 to 21 MAR 2024

SE-2, 22 FEB 2024 to 21 MAR 2024

OSPRI SEVEN ARRIVAL (RNAV) Arrival Routes

CHARLESTON, SOUTH CAROLINA



LANDING KCHS:

Rwy 3: Expect RADAR vectors to final approach course prior to RECHY.
 Rwy 15: Expect ILS or LOC RWY 15.
 Rwy 21: Expect RADAR vectors to final approach course prior to MYERS.
 Rwy 33: Expect RADAR vectors to final approach course prior to JAARD.

LANDING KJZI:

Expect RADAR vectors to final approach course prior to CLFTN.

NOTE: RADAR required.

NOTE: RNAV 1.

NOTE: DME/DME/IRU or GPS required.

NOTE: Turbojet aircraft only.

NOTE: Monitor ATIS for landing runway.

NOTE: Expect runway assignment from Charleston Approach Control on initial contact.

ARRIVAL ROUTE DESCRIPTION

KCHS: From TRTLS on track 119° to OSPRI.

LANDING KCHS RUNWAY 3: From OSPRI on track 161° to cross AALEX between 5000 and 10000 and at 250K, then on track 163° to cross RECHY at 4000 and at 210K, then on heading 125° or as assigned by ATC. Expect RNP RWY 3 approach.

Non-RNP aircraft: Expect RADAR vectors to final approach course.

LANDING KCHS RUNWAY 15: From OSPRI on track 098° to cross LUTHR at or above 4000. Expect ILS or LOC RWY 15 approach.

LANDING KCHS RUNWAY 21: From OSPRI on track 098° to cross LUTHR at or above 4000, then on track 137° to cross MYERS at 3000, then on heading 137° or as assigned by ATC. Expect RNP RWY 21 approach. Non-RNP aircraft: Expect RADAR vectors to final approach course.

LANDING KCHS RUNWAY 33: From OSPRI on track 148° to cross PAMJE between 5000 and 10000 and at 250K, then on track 149° to cross LLEXI at or above 5000 and at 210K, then on track 149° to cross JAARD at 4000 and at 210K, then on heading 149° or as assigned by ATC. Expect RNP RWY 33 approach. Non-RNP aircraft: Expect RADAR vectors to final approach course.

LANDING KJZI: From TRTLS on track 119° to OSPRI, then on track 174° to cross NKLSS between 5000 and 10000, then on track 174° to CLFTN, then on track 174° to cross JACKE at 4000 and at 210K, then on heading 174° or as assigned by ATC. Expect RADAR vectors to final approach course.