

WAAS CH 82005 W16A	APP CRS 163°	Rwy Idg TDZE Apt Elev	5000 1515 1535
--	------------------------	-----------------------------	---

RNAV (GPS) RWY 16

PICKENS COUNTY (JZP)

RNP APCH - GPS.

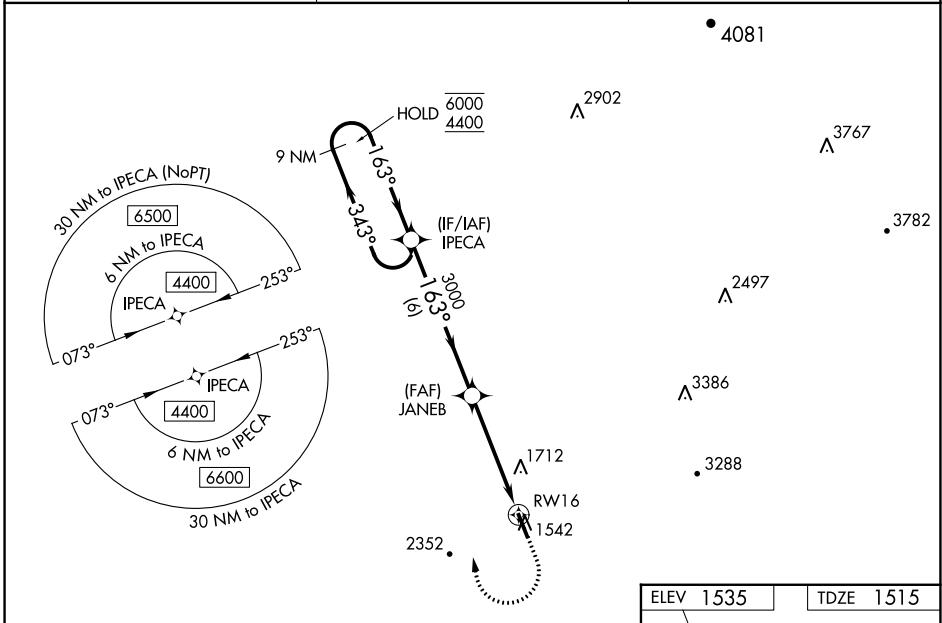
⚠ Rwy 16 helicopter visibility reduction below 3/4 SM NA.
For uncompensated Baro-VNAV systems, LNAV/VNAV NA below -18°C or above 54°C.

MISSED APPROACH: Climb to 3000 then climbing right turn to 4400 direct IPECA and hold.

AWOS-3PT
118.55

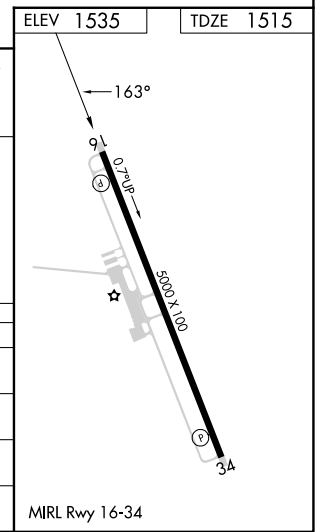
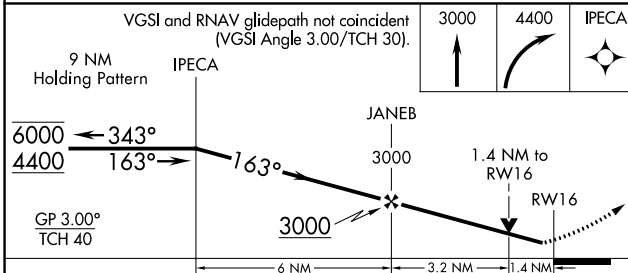
ATLANTA CENTER
133.1 342.425

UNICOM
122.725 (CTAF)



SE-4, 22 FEB 2024 to 21 MAR 2024

SE-4, 22 FEB 2024 to 21 MAR 2024



CATEGORY	A	B	C	D
LPV DA		1915-1 1/8	400 (400-1 1/8)	
LNAV/VNAV DA		1980-1 3/8	465 (500-1 3/8)	
LNAV MDA	1980-1	465 (500-1)	1980-1 3/8	465 (500-1 3/8)
CIRCLING	1980-1 445 (500-1)	2360-1 1/4 825 (900-1 1/4)	2760-3	1225 (1300-3)

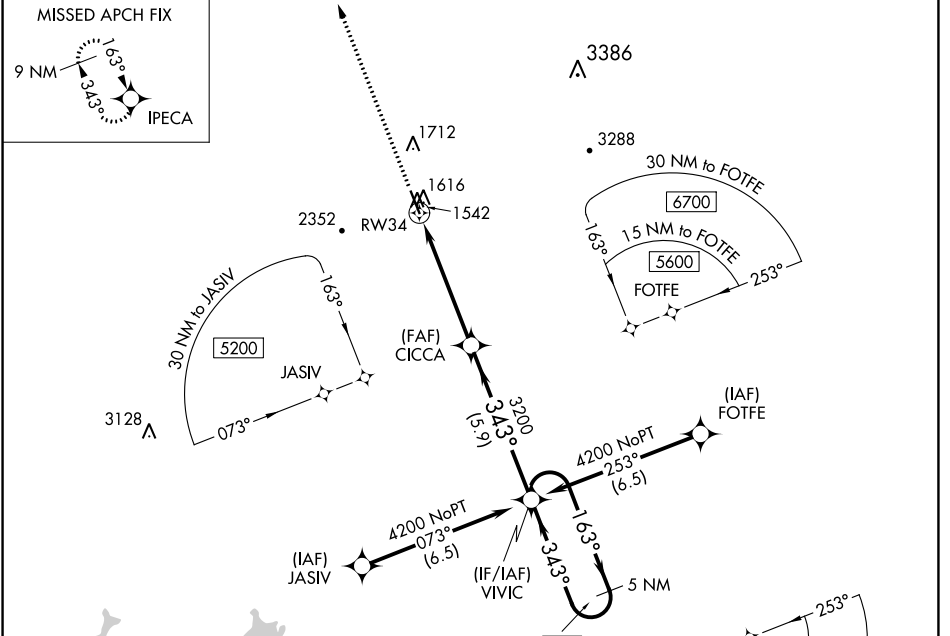
WAAS CH 77705 W34A	APP CRS 343°	Rwy Idg TDZE 1535 Apt Elev 1535
--	------------------------	---

RNAV (GPS) RWY 34

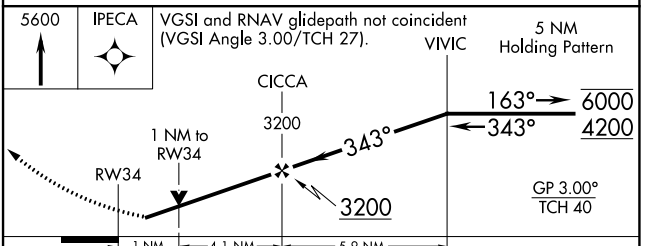
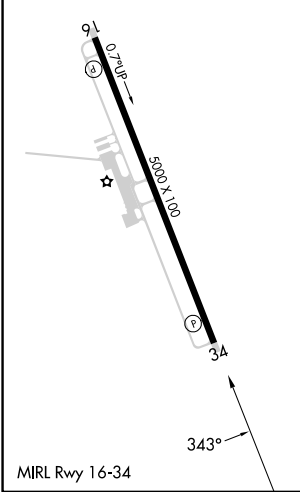
PICKENS COUNTY (JZP)

RNP APCH - GPS.	MISSED APPROACH: Climb to 5600 direct IPECA and hold, continue climb-in-hold to 5600.
Rwy 34 helicopter visibility reduction below 3/4 SM NA.	

AWOS-3PT 118.55	ATLANTA CENTER 133.1 342.425	UNICOM 122.725 (CTAF)
---------------------------	--	---------------------------------



ELEV 1535	TDZE 1535
-----------	-----------



CATEGORY	A	B	C	D
LPV DA	1789-3/4	254 (300-3/4)		NA
LNAV MDA	1880-1	345 (400-1)		NA
CIRCLING	2040-1 505 (600-1)	2380-1 1/4 845 (900-1 1/4)	2800-3 1265 (1300-3)	NA

SE-4, 22 FEB 2024 to 21 MAR 2024

SE-4, 22 FEB 2024 to 21 MAR 2024