


LOC HBE 110.9	APP CRS 236°	Rwy Idg TDZE Apt Elev	7372 1145 1199
-------------------------	------------------------	-----------------------------	---

ILS or LOC RWY 24

ARNOLD PALMER RGNL (LBE)

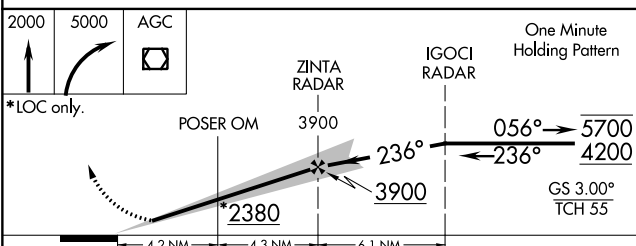
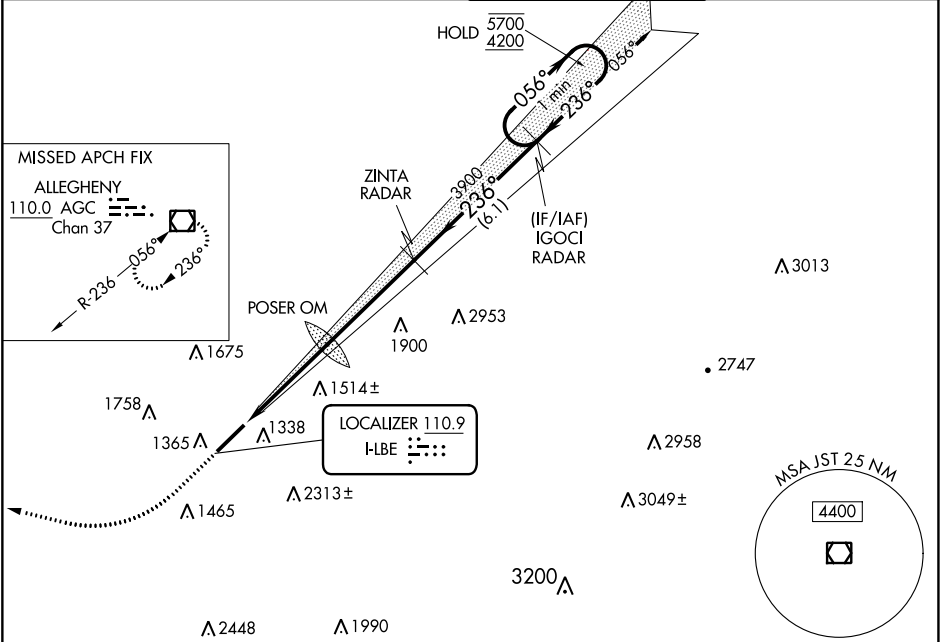
RNAV 1-GPS or RADAR required for procedure entry.
From IGOCI: RNAV 1-GPS required.
RADAR required.

⚠ Circling NA SE of Rwy 6-24. Inop table does not apply to S-LOC 24 Cats C/D.
⚠ For inop ALS, increase POSER OM minimums S-LOC 24 Cats C/D visibility to 1 3/4 SM.

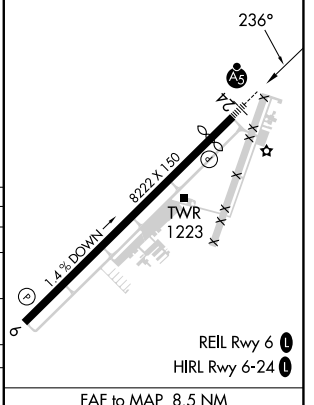
MALSR 

MISSED APPROACH: Climb to 2000 then climbing right turn to 5000 direct AGC VOR/DME and hold.

ATIS 118.375	JOHNSTOWN APP CON * 121.2 299.2	PALMER TOWER * 125.0 (CTAF)	GND CON 121.8
------------------------	---	---------------------------------------	-------------------------



ELEV 1199	TDZE 1145
-----------	-----------



CATEGORY	A	B	C	D
S-ILS 24	1345-1/2 200 (200-1/2)			
S-LOC 24	2380-3/4 1235 (1200-3/4)	2380-1 1235 (1200-1)	2380-3	1235 (1200-3)
C CIRCLING	2380-1 1/4 1181 (1200-1 1/4)	2380-1 1/2 1181 (1200-1 1/2)	2380-3	1181 (1200-3)
POSER OM MINIMUMS				
S-LOC 24	1760-1/2	615 (600-1/2)	1760-1 3/8	615 (600-1 3/8)
C CIRCLING	1760-1 561 (600-1)	1780-1 581 (600-1)	2060-2 1/2 861 (900-2 1/2)	2060-2 3/4 861 (900-2 3/4)

FAF to MAP 8.5 NM					
Knots	60	90	120	150	180
Min:Sec	8:30	5:40	4:15	3:24	2:50

NE-4, 22 FEB 2024 to 21 MAR 2024

NE-4, 22 FEB 2024 to 21 MAR 2024

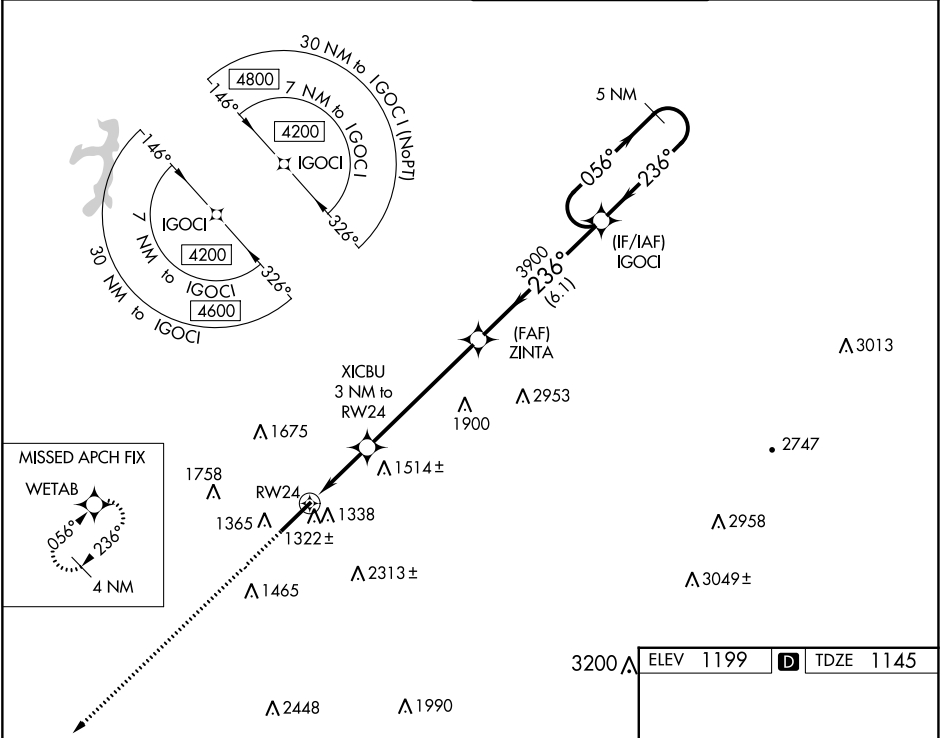
WAAS CH 70499 W24A	APP CRS 236°	Rwy Idg TDZE Apt Elev	7372 1145 1199
--	------------------------	-----------------------------	---

RNAV (GPS) RWY 24

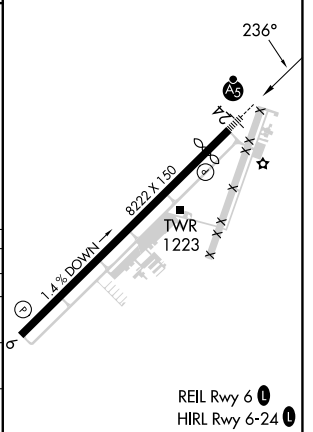
ARNOLD PALMER RGNL (L.B.E.)

<p>For uncompensated Baro-VNAV systems, LNAV/VNAV NA below -17°C (2°F) or above 54°C (130°F). Circling NA southeast of Rwy 6-24. DME/DME RNP-0.3 NA.</p>	<p>MALSR</p>	<p>MISSED APPROACH: Climb to 4200 direct WETAB and hold, continue climb-in-hold to 4200.</p>
	<p>GPS</p>	<p>ELEV 1199</p>

<p>ATIS 118.375</p>	<p>JOHNSTOWN APP CON* 121.2 299.2</p>	<p>PALMER TOWER* 125.0 (CTAF) 0</p>	<p>GND CON 121.8</p>
--------------------------------	--	--	---------------------------------



4200	WETAB	5 NM Holding Pattern	
*LNAV only.		ZINTA	IGOCI
		XICBU 3 NM to RW24	3900
		RW24	2140
			3900
			4200
			GP 3.00° TCH 55
			056° →
			← 236°
			236°
			1.2
			1.8 NM
			5.5 NM
			6.1 NM
CATEGORY	A	B	C
LPV DA		1345 - 1/2	200 (200-1/2)
LNAV/VNAV DA		1498 - 3/4	353 (300-3/4)
LNAV MDA	1580 - 1/2	435 (400-1/2)	1580 - 3/4 435 (400-3/4)
CIRCLING	1740 - 1 541 (600-1)	1780 - 1 581 (600-1)	2060 - 2 1/2 861 (900-2 1/2) 2060 - 2 3/4 861 (900-2 3/4)



NE-4, 22 FEB 2024 to 21 MAR 2024

NE-4, 22 FEB 2024 to 21 MAR 2024

WAAS CH 70539 W06A	APP CRS 056°	Rwy Idg 8222 TDZE 1199 Apt Elev 1199
---------------------------------	------------------------	---

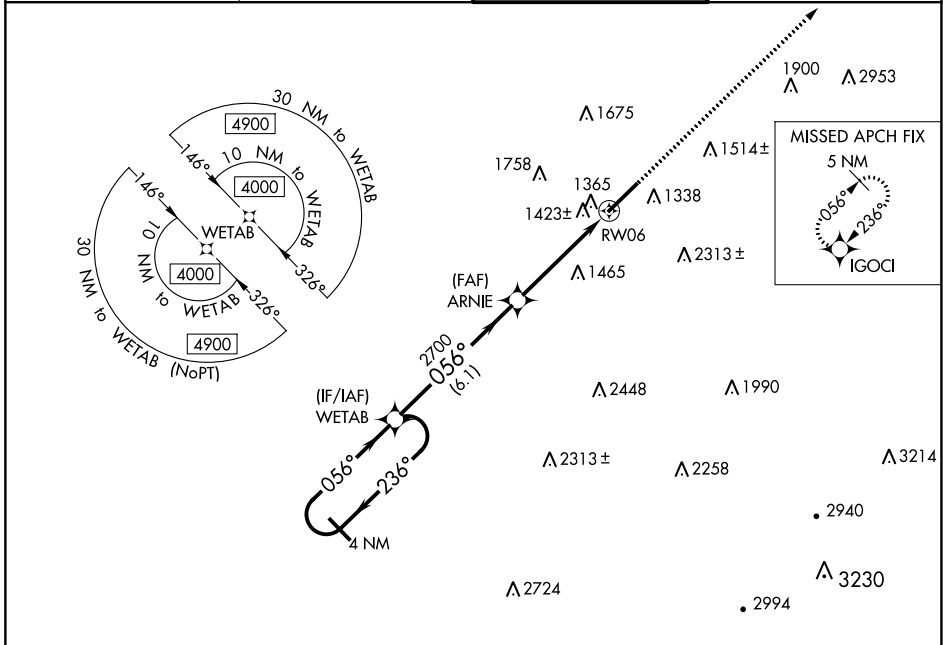
RNAV (GPS) RWY 6

ARNOLD PALMER RGNL (L.B.E.)

⚠ For uncompensated Baro-VNAV systems, LNAV/VNAV NA below -17°C (2°F) or above 54°C (130°F). Circling NA southeast of Rwy 6-24.
Rwy 6 helicopter visibility reduction below 3/4 SM NA. DME/DME RNP-0.3 NA.

MISSED APPROACH:
Climb to 4200 direct IGOCI and hold.

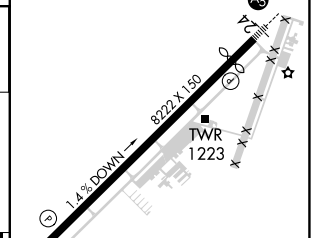
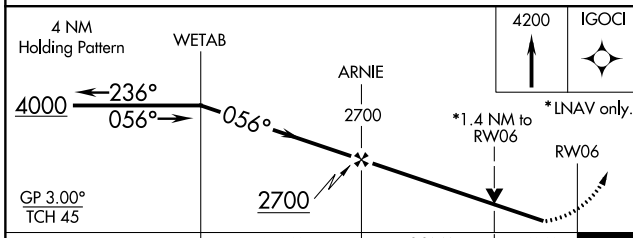
ATIS 118.375	JOHNSTOWN APP CON ★ 121.2 299.2	PALMER TOWER ★ 125.0 (CTAF) 0	GND CON 121.8
------------------------	---	---	-------------------------



NE-4, 22 FEB 2024 to 21 MAR 2024

NE-4, 22 FEB 2024 to 21 MAR 2024

ELEV 1199	D TDZE 1199
-----------	--------------------



CATEGORY	A	B	C	D
LPV DA		1449-3/4	250 (300-3/4)	
LNAV/VNAV DA		1716-13/4	517 (600-13/4)	
LNAV MDA	1680-1	481 (500-1)	1680-13/8	481 (500-13/8)
C CIRCLING	1740-1 541 (600-1)	1780-1 581 (600-1)	2060-21/2 861 (900-21/2)	2060-23/4 861 (900-23/4)

