

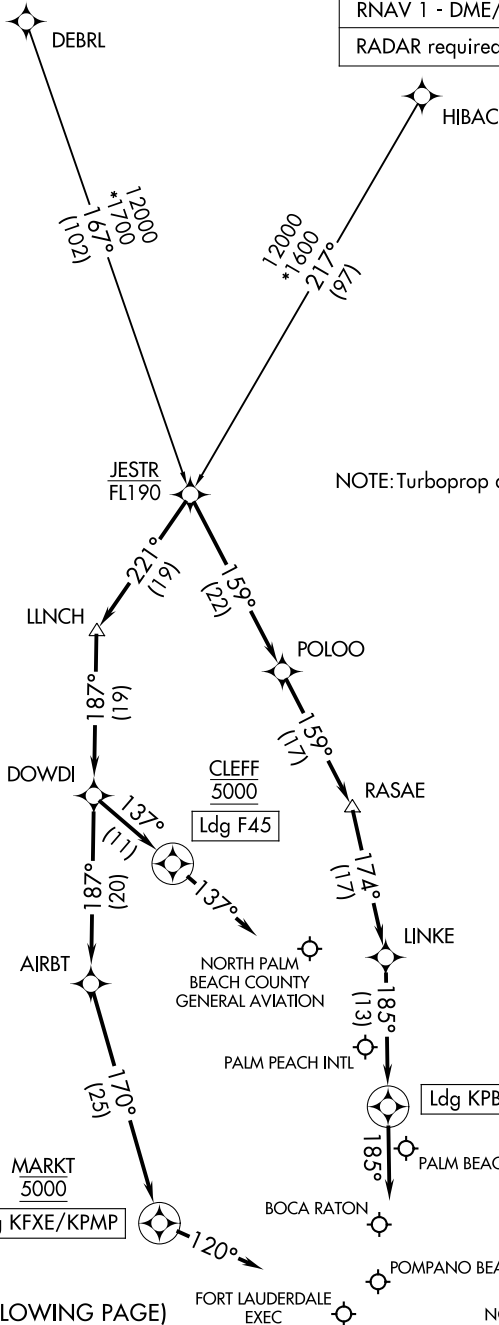
JESTR ONE ARRIVAL (RNAV)

WEST PALM BEACH, FLORIDA

PALM BEACH APP CON
 124.6 317.4
 FXE ATIS
 119.85
 PBI D-ATIS
 123.75
 PMP ATIS
 120.55

RNAV 1 - DME/DME/IRU or GPS.

RADAR required.



NOTE: Turboprop aircraft only.

(NARRATIVE ON FOLLOWING PAGE)

NOTE: Chart not to scale.

JESTR ONE ARRIVAL (RNAV)

WEST PALM BEACH, FLORIDA

ARRIVAL ROUTE DESCRIPTION

DEBRIL TRANSITION (DEBRIL.JESTER1)

HIBAC TRANSITION (HIBAC.JESTER1)

LANDING KPBI/KLNA/KBCT: From JESTR on track 159° to POLOO, then on track 159° to RASAE, then on track 174° to LINKE, then on track 185° to cross JESNA at 5000, then on heading 185° or as assigned by ATC. Expect RADAR vectors to final approach course.

LANDING F45: From JESTR on track 221° to LLNCH, then on track 187° to DOWDI, then on track 137° to cross CLEFF at 5000, then on track 137°. Expect RADAR vectors to final approach course.

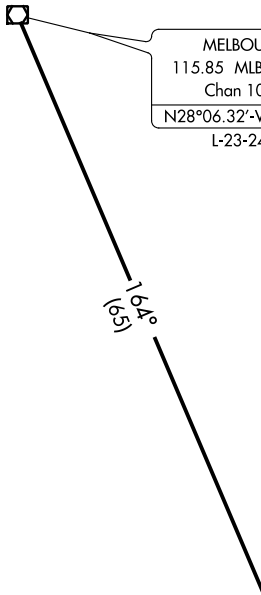
LANDING KFXE/KPMP: From JESTR on track 221° to LLNCH, then on track 187° to DOWDI, then on track 187° to AIRBT, then on track 170° to cross MARKT at 5000, then on heading 120° or as assigned by ATC. Expect RADAR vectors to final approach course.

SE-3, 19 MAY 2022 to 16 JUN 2022

SE-3, 19 MAY 2022 to 16 JUN 2022

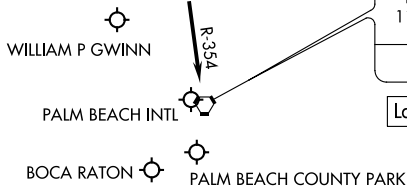
PALM BEACH APP CON
124.6 317.4
PBI D-ATIS
123.75

MELBOURNE
115.85 MLB
Chan 105(Y)
N28°06.32'-W80°38.12'
L-23-24, H-8



NOTE: RADAR required.
NOTE: DME required.
NOTE: Turboprop and prop aircraft only.

RASAE
N27°06.01'
W80°09.44'
4000



PALM BEACH
115.7 PBI
Chan 104
N26°40.80'
W80°05.19'
Ldg all airports

NOTE: Chart not to scale.

ARRIVAL ROUTE DESCRIPTION

LANDING ALL AIRPORTS: From over MELBOURNE VOR/DME (MLB) R-164 to cross RASAE at or above 4000, then on PALM BEACH VORTAC (PBI) R-354 to PBI VORTAC. Expect RADAR vectors to final approach course.

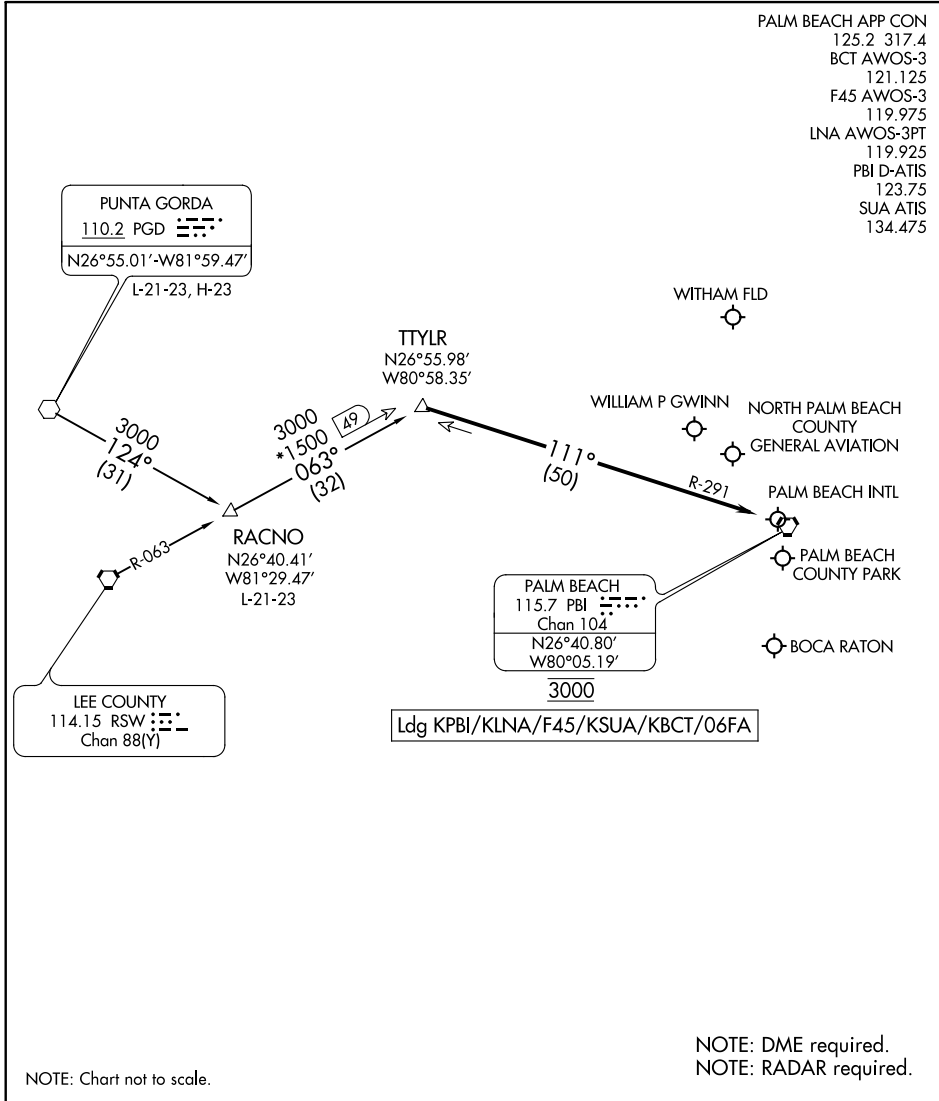
SE-3, 19 MAY 2022 to 16 JUN 2022

SE-3, 19 MAY 2022 to 16 JUN 2022

TTYLR TWO ARRIVAL

WEST PALM BEACH, FLORIDA

- PALM BEACH APP CON 125.2 317.4
- BCT AWOS-3 121.125
- F45 AWOS-3 119.975
- LNA AWOS-3PT 119.925
- PBI D-ATIS 123.75
- SUA ATIS 134.475



SE-3, 19 MAY 2022 to 16 JUN 2022

SE-3, 19 MAY 2022 to 16 JUN 2022

ARRIVAL ROUTE DESCRIPTION

PUNTA GORDA TRANSITION (PGD.TTYLR2): From over PGD VOR on PGD R-124 to RACNO, then on RSW R-063 to TTYLR

RACNO TRANSITION (RACNO.TTYLR2): From over RACNO on RSW R-063 to TTYLR.

LANDING ALL AIRPORTS: From TTYLR on PALM BEACH VORTAC (PBI) R-291 to cross PBI VORTAC at 3000. Expect RADAR vectors.

TTYLR TWO ARRIVAL

WEST PALM BEACH, FLORIDA