

WAAS CH 40107 W17A	APP CRS 163°	Rwy Idg 4200 TDZE 1047 Apt Elev 1047
--	------------------------	---

RNAV (GPS) RWY 17

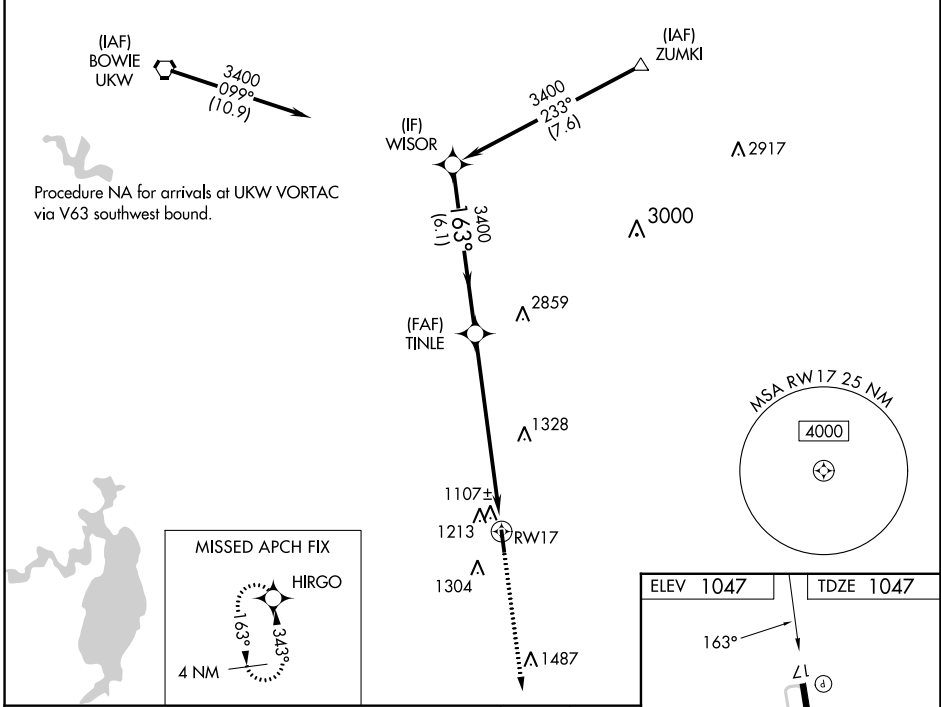
DECATUR MUNI (LUD)

RNP APCH.

⚠ When local altimeter setting not received, use Fort Worth Meacham Intl altimeter setting and increase all DAs 113 feet, and all MDAs 120 feet, increase LPV visibilities ¼ mile, LNAV/VNAV visibilities ½ mile, and circling Cat B visibility ¼ mile. Baro-VNAV and VDP NA when using Fort Worth Meacham Intl altimeter setting. For uncompensated Baro-VNAV systems, LNAV/VNAV NA below -17°C (2°F) or above 54°C (130°F).

MISSED APPROACH: Climb to 2600 direct HIRGO and hold.

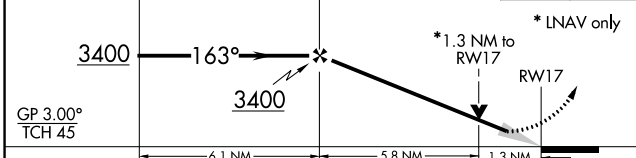
AWOS-3 118.225	REGIONAL APP CON 118.1 306.95	UNICOM 122.8(CTAF) 0
--------------------------	---	--------------------------------



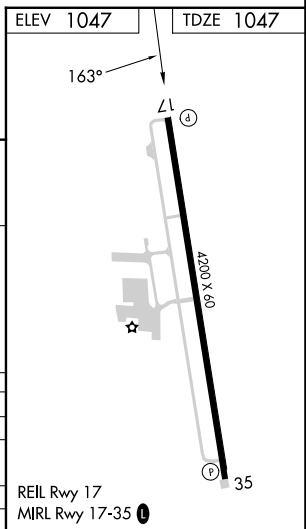
Procedure Turn NA

VGSI and RNAV glidepath not coincident (VGSI Angle 3.50/TCH 23).

2600 HIRGO



CATEGORY	A	B	C	D
LPV DA	1297-1	250 (300-1)		NA
LNAV/VNAV DA	1459-1½	412 (500-1½)		NA
LNAV MDA	1560-1	513 (600-1)		NA
C CIRCLING	1680-1	633 (700-1)		NA



SC-2, 22 FEB 2024 to 21 MAR 2024

SC-2, 22 FEB 2024 to 21 MAR 2024

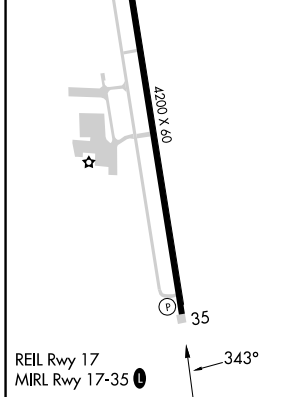
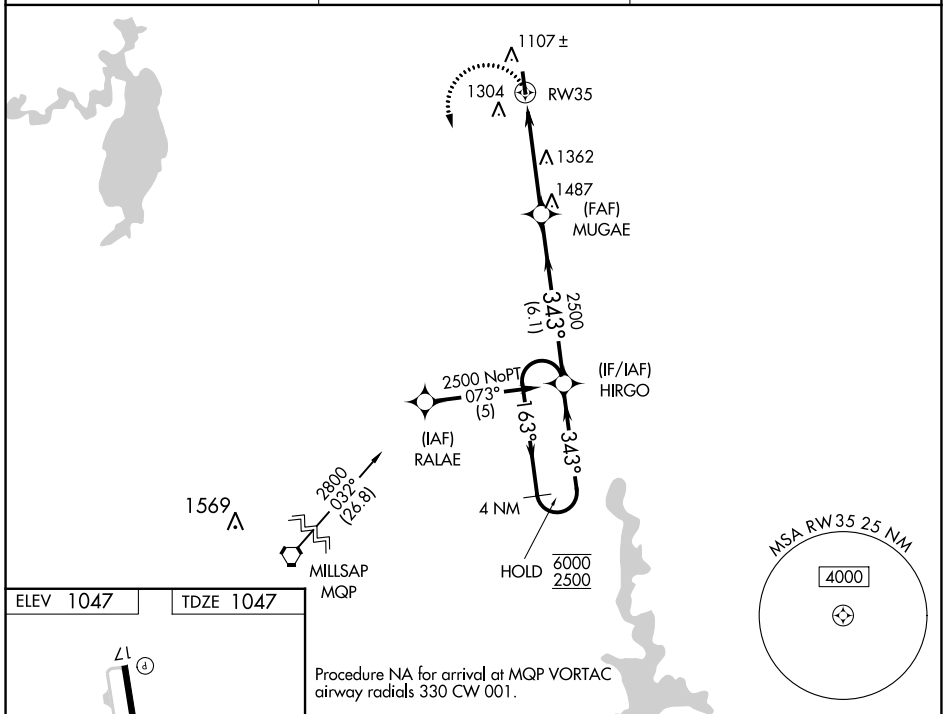
APP CRS 343°	Rwy Idg 4200
	TDZE 1047
	Apt Elev 1047

RNAV (GPS) RWY 35

DECATUR MUNI (LUD)

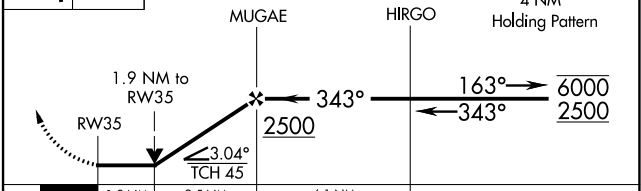
RNP APCH - GPS.	<p>▽ Rwy 35 helicopter visibility reduction below 3/4 SM NA. VDP NA when using Fort Worth Meacham Intl altimeter setting. When local altimeter setting not received, use Fort Worth Meacham Intl altimeter setting and increase all MDAs 120 feet, and LNAV visibility Cat B 1/2 SM, and Circling Cat B 1/4 SM.</p>	<p>MISSED APPROACH: Climbing left turn to 2600 direct HIRGO and hold.</p>
-----------------	--	--

AWOS-3 118.225	REGIONAL APP CON 118.1 306.95	UNICOM 122.8 (CTAF) 0
--------------------------	---	--



Procedure NA for arrival at MQP VORTAC airway radials 330 CW 001.

2600	HIRGO	VGSI and descent angles not coincident (VGSI Angle 3.50/TCH 40).
------	-------	--



CATEGORY	A	B	C	D
LNAV MDA	1 680-1	633 (700-1)	NA	
C CIRCLING	1 680-1	633 (700-1)	NA	

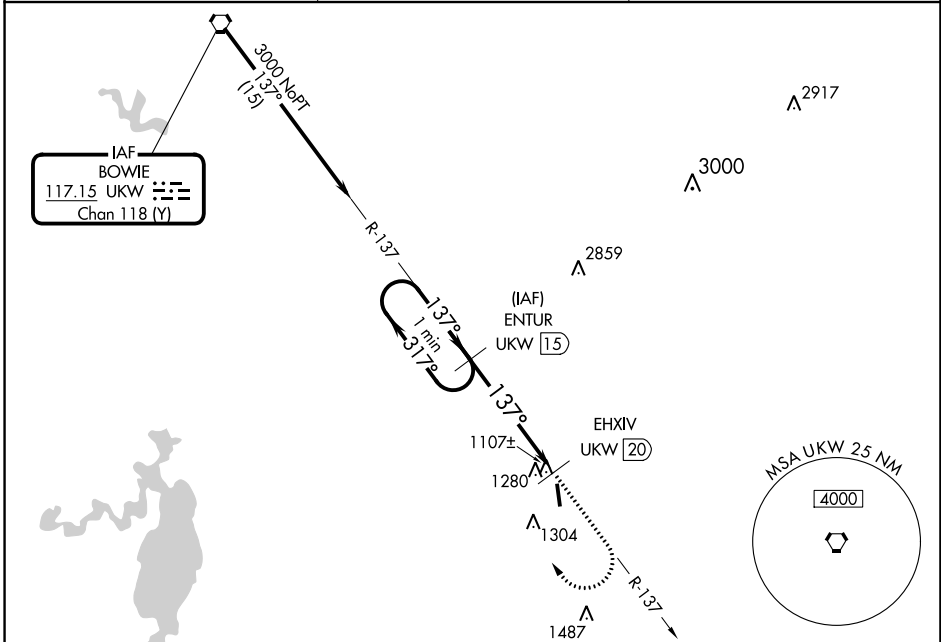
VORTAC UKW 117.15 Chan 118 (Y)	APP CRS 137°	Rwy Idg TDZE Apt Elev	4200 1047 1047
---	------------------------	-----------------------------	---

VOR/DME RWY 17

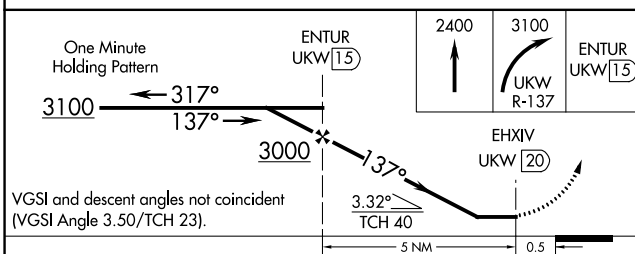
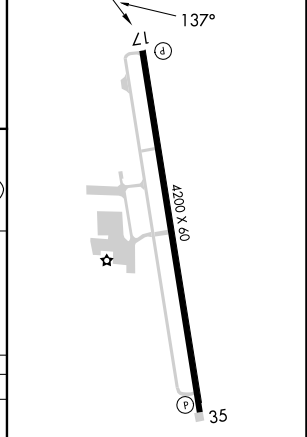
DECATUR MUNI (LUD)

⚠ When local altimeter setting not received, use Fort Worth
⚠ NA Meacham Intl altimeter setting. MISSED APPROACH: Climb to 2400 then climbing right turn to 3100 via UKW R-137 to ENTUR/1.5 DME and hold.

AWOS-3 118.225	REGIONAL APP CON 118.1 306.95	UNICOM 122.8(CTAF) 0
--------------------------	---	--------------------------------



ELEV 1047	TDZE 1047
-----------	-----------



CATEGORY	A	B	C	D
S-17	1700-1 653 (700-1)	1700-1¼ 653 (700-1¼)		NA
C CIRCLING	1800-1 753 (800-1)	1800-1¼ 753 (800-1¼)		NA

REIL Rwy 17
MIRL Rwy 17-35 **0**

SC-2, 22 FEB 2024 to 21 MAR 2024

SC-2, 22 FEB 2024 to 21 MAR 2024