

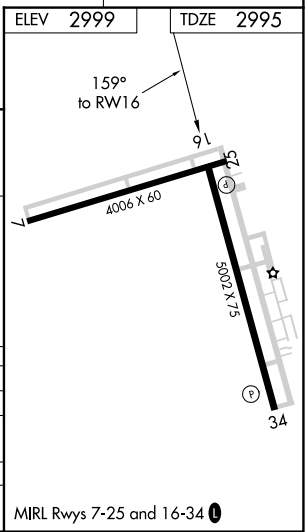
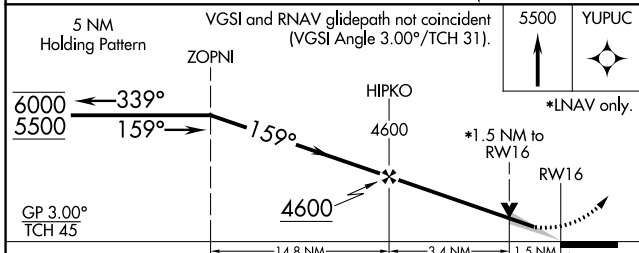
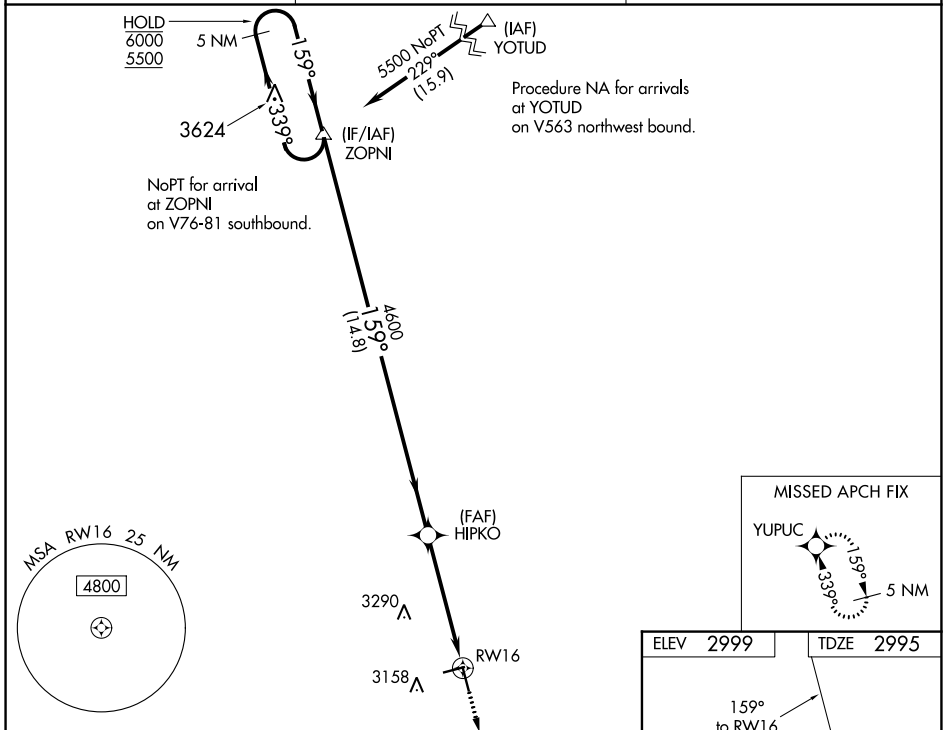
WAAS CH 70726 W16A	APP CRS 159°	Rwy Idg TDZE Apf Elev	5002 2995 2999
--	------------------------	-----------------------------	---

RNAV (GPS) RWY 16

LAMESA MUNI (LUV)

RNP APCH.	MISSED APPROACH: Climb to 5500 direct YUPUC and hold.
▲ Circling Rwy 7, 25 NA at night. For uncompensated Baro-VNAV systems, LNAV/VNAV NA below -20°C or above 54°C.	

AWOS-3PT 124.175	FORT WORTH CENTER 132.6 269.05	UNICOM 122.8 (CTAF)
----------------------------	--	-------------------------------



CATEGORY	A	B	C	D
LPV DA		3245-3/4	250 (300-3/4)	
LNAV/VNAV DA		3245-3/4	250 (300-3/4)	
LNAV MDA	3500-1	505 (600-1)	3500-1 3/8	505 (600-1 1/8)
▲ CIRCLING	3500-1	501 (600-1)	3700-2 701 (800-2)	3840-2 3/4 841 (900-2 3/4)

SC-2, 22 FEB 2024 to 21 MAR 2024

SC-2, 22 FEB 2024 to 21 MAR 2024

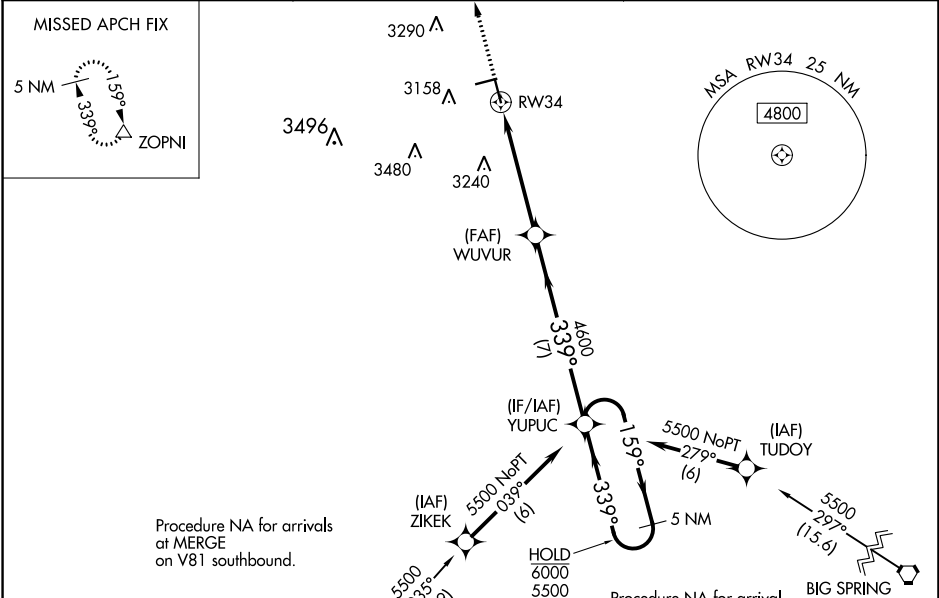
WAAS CH 56626 W34A	APP CRS 339°	Rwy Idg TDZE Apt Elev	5002 2994 2999
--	------------------------	-----------------------------	---

RNAV (GPS) RWY 34

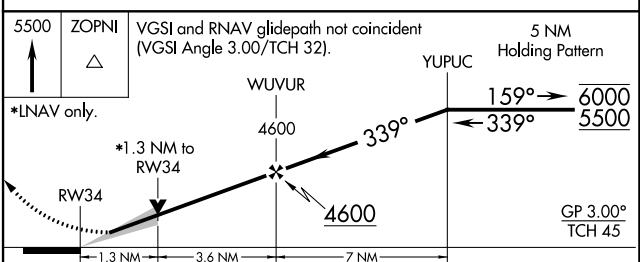
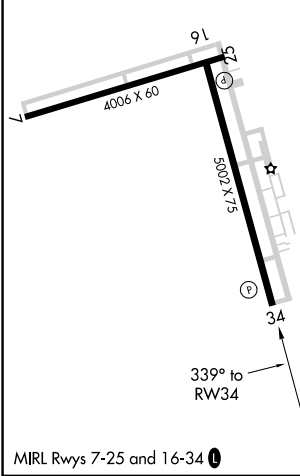
LAMESA MUNI (LUV)

RNP APCH.	MISSED APPROACH: Climb to 5500 direct ZOPNI and hold.
-----------	---

AWOS-3PT 124.175	FORT WORTH CENTER 132.6 269.05	UNICOM 122.8 (CTAF) 0
----------------------------	--	---------------------------------



ELEV 2999	TDZE 2994
-----------	-----------



CATEGORY	A	B	C	D
LPV DA		3194- ³ / ₄	200 (200- ³ / ₄)	
LNAV/VNAV DA		3244- ³ / ₄	250 (300- ³ / ₄)	
LNAV MDA	3420-1	426 (500-1)	3420-1 ¹ / ₄	426 (500-1 ¹ / ₄)
C CIRCLING	3460-1	461 (500-1)	3700-2 701 (800-2)	3840-2 ³ / ₄ 841 (900-2 ³ / ₄)

SC-2, 22 FEB 2024 to 21 MAR 2024

SC-2, 22 FEB 2024 to 21 MAR 2024