

WAAS CH <b>63142</b> <b>W16A</b>	APP CRS <b>161°</b>	Rwy Idg TDZE Apt Elev	<b>6400</b> <b>9934</b> <b>9934</b>
--	------------------------	-----------------------------	---

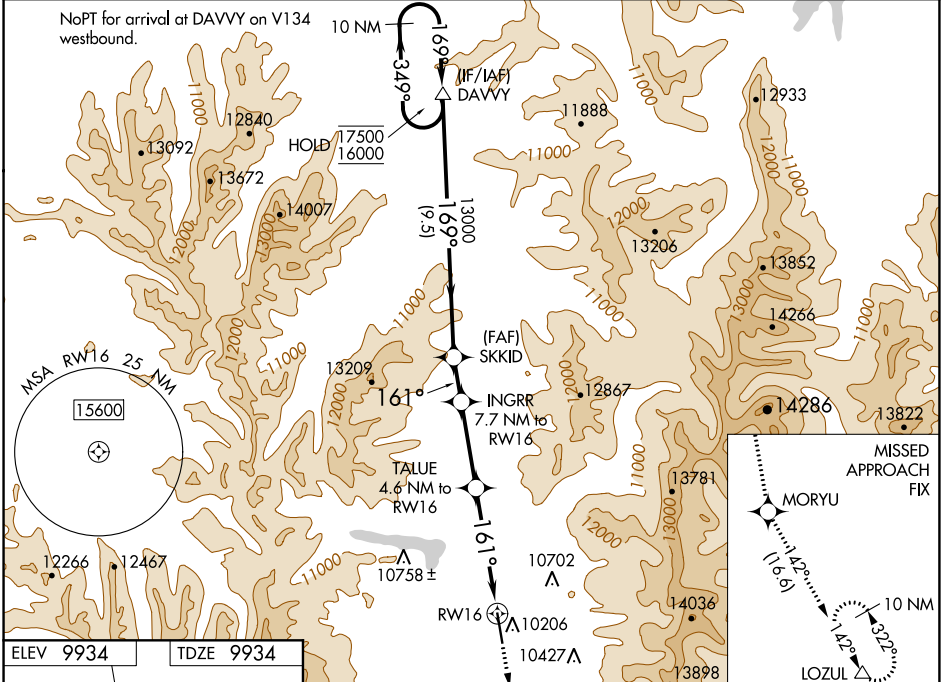
# RNAV (GPS) RWY 16

LAKE COUNTY (L.XV)

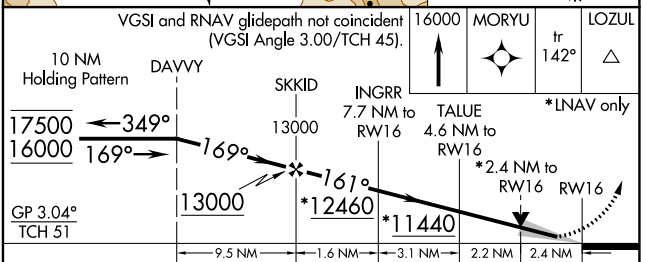
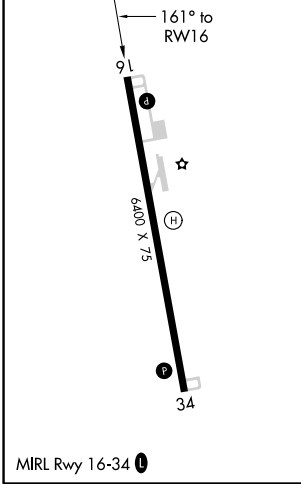
RNP APCH. MISSED APPROACH: Climb to 16000 direct MORYU and on track 142° to LOZUL and hold, continue climb-in-hold to 16000. #Missed approach requires minimum climb of 240 feet per NM to 12500.

For uncompensated Baro-VNAV systems, LNAV/VNAV NA below -26°C or above 54°C. When local altimeter setting not received, procedure NA.  
-27°C

ASOS <b>118.375</b>	DENVER CENTER <b>119.85 363.15</b>	UNICOM <b>122.8 (CTAF) 0</b>
------------------------	---------------------------------------	---------------------------------



ELEV 9934	TDZE 9934
-----------	-----------



CATEGORY	A	B	C	D
LPV DA#	10184-1 250 (300-1)			NA
LPV DA	10546-1¼ 612 (700-1¼)			NA
LNAV/VNAV DA	10542-1¾ 608 (700-1¾)			NA
LNAV MDA	10740-1 806 (900-1)	10740-1¼ 806 (900-1¼)	10740-2½ 806 (900-2½)	NA
CIRCLING	10740-1 806 (900-1)	11040-1½ 1106 (1200-1½)	12020-3 2086 (2100-3)	NA

SW-1, 03 DEC 2020 to 31 DEC 2020

SW-1, 03 DEC 2020 to 31 DEC 2020



NAME ALTERNATE MINIMUMS

**COLORADO SPRINGS, CO**

CITY OF COLORADO SPRINGS  
MUNI (COS).....**ILS or LOC Rwy 17L**<sup>46</sup>  
**ILS or LOC Rwy 35L**<sup>2</sup>  
**ILS or LOC Rwy 35R**<sup>2</sup>  
**NDB Rwy 35L**<sup>1</sup>  
**RNAV (GPS) Rwy 31**<sup>1</sup>  
**RNAV (GPS) Y Rwy 17L**<sup>5</sup>  
**RNAV (GPS) Y Rwy 17R**<sup>1</sup>  
**RNAV (GPS) Y Rwy 35L**<sup>1</sup>  
**RNAV (GPS) Y Rwy 35R**<sup>1</sup>  
**RNAV (RNP) Z Rwy 17R**<sup>3</sup>

- <sup>1</sup>Category C, 900-2½; Category D, 1100-3.
- <sup>2</sup>ILS, Category B, 700-2; Category C, 900-2½; Category D, 1100-3; LOC, Category C, 900-2 ½; Category D, 1100-3.
- <sup>3</sup>Categories A, B, C, D, 800-2½.
- <sup>4</sup>LOC, Categories A, B, 1400-2; Categories C, D, 1400-3.
- <sup>5</sup>Categories A, B, 900-2; Category C, 900-2½; Category D, 1100-3.
- <sup>6</sup>NA when local weather not available.

**CORTEZ, CO**

CORTEZ  
MUNI (CEZ).....**RNAV (GPS) Rwy 3**<sup>12</sup>  
**RNAV (GPS) Y Rwy 21**<sup>2</sup>  
**RNAV (GPS) Z Rwy 21**<sup>3</sup>  
**VOR Rwy 21**<sup>4</sup>

- <sup>1</sup>NA when local weather not available.
- <sup>2</sup>Category D, 900-3.
- <sup>3</sup>Categories A, B, 1300-2; Categories C, D, 1300-3.
- <sup>4</sup>Category C, 800-2½.

**CRAIG, CO**

CRAIG-MOFFAT (CAG).....**RNAV (GPS) Rwy 7**<sup>1</sup>  
**RNAV (GPS) Rwy 25**<sup>2</sup>  
**VOR Rwy 25**<sup>3</sup>

- <sup>1</sup>Category A, 1000-2; Category B, 1200-2; Categories C, D, 1600-3.
- <sup>2</sup>Category A, 1100-2; Category B, 1200-2; Categories C, D, 1600-3.
- <sup>3</sup>Categories A, B, 1700-2; Categories C, D, 1700-3.

**DEL NORTE, CO**

ASTRONAUT KENT  
ROMINGER (RCV).....**RNAV (GPS) Rwy 24**  
Category B, 900-2.

**DELTA, CO**

BLAKE  
FIELD (AJZ).....**RNAV (GPS) Rwy 3**  
Category B, 1200-2; Category C, 1500-3.

NAME ALTERNATE MINIMUMS

**DEMING, NM**

DEMING MUNI (DMN).....**RNAV (GPS)-A**<sup>1</sup>  
**RNAV (GPS) Rwy 4**<sup>2</sup>  
**RNAV (GPS) Rwy 8**<sup>1</sup>  
**RNAV (GPS) Rwy 22**<sup>1</sup>  
**VOR Rwy 26**

- NA when local weather not available.
- <sup>1</sup>Category D, 800-2½.
- <sup>2</sup>Categories A, B, C, D, 800-2½.

**DENVER, CO**

CENTENNIAL  
(APA).....**ILS or LOC Rwy 35R**<sup>1</sup>  
**RNAV (GPS) Rwy 17L**<sup>2</sup>  
**RNAV (GPS) Rwy 35R**<sup>3</sup>

- <sup>1</sup>LOC, Category C, 900-2½; Category D, 900-2½.
- <sup>2</sup>Category C, 900-2½; Category D, 1100-3.
- <sup>3</sup>Category C, 900-2½; Category D, 900-2½.

**COLORADO AIR AND SPACE**

PORT (CFO).....**ILS or LOC Rwy 17**<sup>123</sup>  
**ILS or LOC Rwy 26**<sup>13</sup>  
**ILS or LOC Rwy 35**<sup>12</sup>  
**RNAV (GPS) Rwy 17**<sup>14</sup>  
**RNAV (GPS) Rwy 26**<sup>14</sup>  
**RNAV (GPS) Rwy 35**<sup>14</sup>

- <sup>1</sup>NA when local weather not available.
- <sup>2</sup>NA when control tower closed.
- <sup>3</sup>LOC, Category D, 800-2½.
- <sup>4</sup>Category D, 800-2½.

**ROCKY MOUNTAIN**

METROPOLITAN (BJC).....**RNAV (GPS) Rwy 12L**  
NA when local weather not available.  
Category D, 800-2½.

**DURANGO, CO**

DURANGO-LA PLATA  
COUNTY (DRO).....**RNAV (GPS) Rwy 3**  
**RNAV (GPS) Rwy 21**  
Category C, 900-2½; Category D, 1500-3.

**EAGLE, CO**

EAGLE COUNTY  
RGNL (EGE).....**LDA Rwy 25**<sup>1</sup>  
**RNAV (GPS)-D**<sup>2</sup>  
<sup>1</sup>LDA/GS, 1800-3; LDA, 2100-2½.  
<sup>2</sup>Categories A, B, 2700-2; Categories C, D, 2700-3.

**FARMINGTON, NM**

FOUR CORNERS  
RGNL (FMN).....**ILS or LOC Rwy 25**<sup>12</sup>  
**RNAV (GPS) Rwy 5**<sup>3</sup>  
**RNAV (GPS) Rwy 7**<sup>3</sup>  
**RNAV (GPS) Rwy 23**<sup>4</sup>  
**RNAV (GPS) Rwy 25**<sup>3</sup>

- <sup>1</sup>NA when control tower closed.
- <sup>2</sup>ILS, Categories B, C, D, 700-2.
- <sup>3</sup>NA when local weather not available.
- <sup>4</sup>Category D, 800-2½.

03 DEC 2020 to 31 DEC 2020

03 DEC 2020 to 31 DEC 2020

NAME ALTERNATE MINIMUMS

**FORT COLLINS/LOVELAND, CO**  
NORTHERN COLORADO  
RGNL (FNL).....**RNAV (GPS) Rwy 15**  
**RNAV (GPS) Rwy 33<sup>1</sup>**  
**VOR-A**

NA when local weather not available.  
<sup>1</sup>Category D, 800-2¼.

**FORT MORGAN, CO**  
FORT MORGAN  
MUNI (FMM).....**RNAV (GPS) Rwy 14<sup>1</sup>**  
**RNAV (GPS) Rwy 32<sup>12</sup>**

<sup>1</sup>Category D, 800-2¼.  
<sup>2</sup>NA when local weather not available.

**GALLUP, NM**  
GALLUP  
MUNI (GUP).....**RNAV (GPS) Rwy 6<sup>12</sup>**  
**RNAV (GPS) Rwy 24<sup>3</sup>**  
**VOR Rwy 6<sup>24</sup>**

<sup>1</sup>Categories A, B, 900-2; Category C, 900-2½;  
Category D, 900-3.  
<sup>2</sup>NA when local weather not available.  
<sup>3</sup>Categories A, B, 900-2; Category C, 900-2¾;  
Category D, 900-3.  
<sup>4</sup>Categories A, B, 1000-2;  
Categories C, D, 1000-3.

**GRAND JUNCTION, CO**  
GRAND JUNCTION  
RGNL (GJT).....**ILS or LOC Rwy 11<sup>12</sup>**  
**LDA/DME Rwy 29<sup>3</sup>**  
**RNAV (GPS) Rwy 29<sup>4</sup>**  
**RNAV (GPS) Y Rwy 11<sup>3</sup>**

<sup>1</sup>NA when control tower closed.  
<sup>2</sup>LOC, Category D, 800-2¼.  
<sup>3</sup>Category D, 800-2¼.  
<sup>4</sup>Category D, 800-2¼.

**GREELEY, CO**  
GREELEY-WELD  
COUNTY (GXY).....**ILS or LOC Rwy 35<sup>1</sup>**  
**RNAV (GPS) Rwy 10<sup>2</sup>**  
**RNAV (GPS) Rwy 17<sup>2</sup>**  
**RNAV (GPS) Rwy 28<sup>2</sup>**  
**RNAV (GPS) Rwy 35<sup>2</sup>**  
**VOR-A<sup>2</sup>**

NA when local weather not available.  
<sup>1</sup>ILS, Category D, 700-2¼; LOC Category D,  
800-2¼.  
<sup>2</sup>Category D, 800-2¼.

NAME ALTERNATE MINIMUMS

**GUNNISON, CO**  
GUNNISON-CRESTED  
BUTTE RGNL (GUC).....**ILS or LOC Rwy 6<sup>1</sup>**  
**RNAV (RNP) Rwy 6, 800-2¼<sup>4</sup>**  
**VOR or GPS-A<sup>23</sup>**

<sup>1</sup>ILS, Categories A, B, C, 1000-3; LOC, Categories  
A, B, C, D 1600-3.  
<sup>2</sup>Categories A, B, C, 1700-3; Cat D, 2300-3.  
<sup>3</sup>NA when local altimeter setting not available  
except for operators with approved weather  
reporting service.

**HAYDEN, CO**  
YAMPA  
VALLEY (HDN).....**RNAV (GPS) Rwy 28<sup>1</sup>**  
**RNAV (GPS) Y Rwy 10<sup>23</sup>**  
**RNAV (RNP) Z Rwy 10<sup>24</sup>**  
**VOR/DME-B<sup>25</sup>**

<sup>1</sup>Category C, 1100-3; Category D, 1600-3.  
<sup>2</sup>NA when local weather not available.  
<sup>3</sup>Categories A, B, 1100-2; Category C, 1100-3;  
Category D, 1600-3.  
<sup>4</sup>Categories A, B, C, D, 1400-5.  
<sup>5</sup>Categories A, B, 1300-2; Category C, 1300-3;  
Category D, 1600-3.

**HOBBS, NM**  
LEA COUNTY  
RGNL (HOB).....**ILS or LOC Rwy 3<sup>12</sup>**  
**LOC BC Rwy 21<sup>12</sup>**  
**RNAV (GPS) Rwy 3<sup>2</sup>**  
**RNAV (GPS) Rwy 21<sup>2</sup>**  
**RNAV (GPS) Rwy 30<sup>2</sup>**  
**VOR or TACAN Rwy 21**

Category C, 800-2¼; Category D, 800-2¼.  
<sup>1</sup>NA when control tower closed.  
<sup>2</sup>NA when local weather not available.

**KREMMLING, CO**  
MC ELROY  
AIRFIELD (20V).....**RNAV (GPS)-B<sup>1</sup>**  
**RNAV (GPS) Rwy 27<sup>2</sup>**  
**VOR/DME-A<sup>3</sup>**

<sup>1</sup>Categories A, B, 2100-2; Category C, 2100-3.  
<sup>2</sup>Categories A, B, 1700-6; Category C, 1900-6.  
<sup>3</sup>Categories A, B, 1800-2; Category C, 1900-3.

**LA JUNTA, CO**  
LA JUNTA  
MUNI (LHX).....**RNAV (GPS) Rwy 8**  
**RNAV (GPS) Rwy 26**  
NA when local weather not available.

03 DEC 2020 to 31 DEC 2020

03 DEC 2020 to 31 DEC 2020

NAME ALTERNATE MINIMUMS

**LAMAR, CO**

SOUTHEAST COLORADO  
RGNL (LAA).....RNAV (GPS) Rwy 8  
RNAV (GPS) Rwy 18  
RNAV (GPS) Rwy 26  
RNAV (GPS) Rwy 36<sup>1</sup>  
VOR Rwy 18<sup>2</sup>  
VOR Rwy 36<sup>1</sup>

NA when local weather not available.

<sup>1</sup>Category D, 800-2¼.

<sup>2</sup>Categories A, B, 900-2; Category C, 900-2½,  
Category D, 900-2¼.

**LAS CRUCES, NM**

LAS CRUCES  
INTL (LRU).....RNAV (GPS) Rwy 12  
RNAV (GPS) Rwy 30

NA when local weather not available.

Category C, 900-2½; Category D, 900-2¼.

**LAS VEGAS, NM**

LAS VEGAS MUNI (LVS).....RNAV (GPS) Rwy 2  
RNAV (GPS) Rwy 20  
RNAV (GPS) Rwy 32  
VOR Rwy 20

NA when local weather not available.

**LEADVILLE, CO**

LAKE COUNTY (LXV).....RNAV (GPS) Rwy 16  
Category A, 900-2; Category B, 1200-2;  
Category C, 2100-3.

**LONGMONT, CO**

VANCE BRAND (LMO).....RNAV (GPS) Rwy 29<sup>2</sup>  
RNAV (GPS)-B<sup>1</sup>  
VOR /DME-A<sup>1</sup>

<sup>1</sup>NA when local weather not available.

<sup>2</sup>Category C, 900-2½; Category D, 1500-3.

**LOS ALAMOS, NM**

LOS ALAMOS (LAM).....RNAV (GPS) Y Rwy 27  
RNAV (GPS) Z Rwy 27

NA when local weather not available.

Category C, 800-2½.

**MEEKER, CO**

MEEKER (EEO).....RNAV (GPS)-B<sup>2</sup>  
RNAV (GPS) Rwy 3<sup>1</sup>

<sup>1</sup>Categories A, B, 1800-2; Category C, 1800-3.

<sup>2</sup>Categories A, B, 1600-2; Category C, 1600-3.

**MONTROSE, CO**

MONTROSE  
RGNL (MTJ).....RNAV (GPS) Rwy 13<sup>1</sup>  
RNAV (GPS) Rwy 17<sup>1</sup>  
RNAV (GPS) Rwy 35<sup>2</sup>  
VOR Rwy 13<sup>2</sup>

<sup>1</sup>Category D, 1100-3.

<sup>2</sup>Category C, 900-2¼; Category D, 1000-3.

NAME ALTERNATE MINIMUMS

**PAGOSA SPRINGS, CO**

STEVENS FIELD (PSO).....RNAV (GPS) Rwy 1  
Category B, 900-2; Category C, 1300-3.

**PORTALES, NM**

PORTALES MUNI (PRZ).....RNAV (GPS) Rwy 1  
NA when local weather not available.

**PUEBLO, CO**

PUEBLO  
MEMORIAL (PUB).....ILS or LOC Rwy 8R<sup>1</sup>  
ILS or LOC Rwy 26L<sup>23</sup>  
RNAV (GPS) Rwy 8R<sup>4</sup>  
RNAV (GPS) Rwy 17<sup>56</sup>  
RNAV (GPS) Rwy 26L<sup>4</sup>  
RNAV (GPS) Rwy 35<sup>1</sup>  
VOR Rwy 26L<sup>7</sup>

<sup>1</sup>LOC, Category C, 900-2½; Categories D, E,  
1100-3.

<sup>2</sup>NA when control tower closed.

<sup>3</sup>ILS, Categories A, B, 700-2; Category C,  
900-2½; Category D, 1100-3; LOC, Category C,  
900-2½; Category D, 1100-3.

<sup>4</sup>Category C, 900-2½; Category D, 1100-3.

<sup>5</sup>Categories A, B, 1000-2, Category C, 1000-2¼;  
Category D, 1000-3.

<sup>6</sup>NA when local weather not available.

<sup>7</sup>Category C, 900-2½.

**RANGELY, CO**

RANGELY (4V0).....RNAV (GPS) Rwy 7<sup>1</sup>  
RNAV (GPS) Rwy 25<sup>2</sup>

<sup>1</sup>Categories A, B, 2000-2; Category C, 2000-3.

<sup>2</sup>Categories A, B, 1700-2; Category C, 1800-3.

**RIFLE, CO**

RIFLE GARFIELD  
COUNTY (RIL).....LOC/DME-A<sup>1</sup>  
ILS Rwy 26<sup>2</sup>  
RNAV (GPS) Y Rwy 8<sup>3</sup>  
RNAV (GPS) W Rwy 26<sup>4</sup>  
RNAV (RNP) Y Rwy 26<sup>5</sup>  
RNAV (RNP) Z Rwy 8<sup>6</sup>  
RNAV (RNP) Z Rwy 26<sup>5</sup>  
VOR/DME-C<sup>3</sup>

<sup>1</sup>Categories A, B, 2300-2; Category C, 2300-3.

<sup>2</sup>ILS, Categories A, B, C, 1300-4.

<sup>3</sup>Categories A, B, 1900-2; Category C, 1900-3.

<sup>4</sup>Categories A, B, 1700-2; Category C, 1700-3.

<sup>5</sup>Categories A, B, C, 900-2½.

<sup>6</sup>Categories A, B, C, 900-3.

03 DEC 2020 to 31 DEC 2020

03 DEC 2020 to 31 DEC 2020

NAME ALTERNATE MINIMUMS

NAME ALTERNATE

**ROSWELL, NM**

ROSWELL AIR CENTER (ROW).....**LOC BC Rwy 3<sup>1</sup>**  
**RNAV (GPS) Rwy 3<sup>2</sup>**  
**RNAV (GPS) Rwy 17<sup>2</sup>**  
**RNAV (GPS) Rwy 21<sup>2</sup>**  
**RNAV (GPS) Rwy 35<sup>2</sup>**

<sup>1</sup>NA when control tower closed.  
<sup>2</sup>NA when local weather not available.

**SALIDA, CO**

SALIDA AIRPORT HARRIETT ALEXANDER FIELD (ANK).....**RNAV (GPS)-A**  
Categories A, B, 2200-2.

**SANTA FE, NM**

SANTA FE MUNI (SAF).....**ILS or LOC Rwy 2<sup>12</sup>**  
**RNAV (GPS) Rwy 2<sup>5</sup>**  
**RNAV (GPS) Rwy 15<sup>5</sup>**  
**RNAV (GPS) Rwy 20<sup>5</sup>**  
**RNAV (GPS) Rwy 28<sup>5</sup>**  
**RNAV (GPS) Rwy 33<sup>5</sup>**  
**VOR/DME-A<sup>34</sup>**  
**VOR Rwy 33<sup>34</sup>**

<sup>1</sup>NA when control tower closed.  
<sup>2</sup>ILS, LOC, Category C, 1000-3; Category D, 1400-3.  
<sup>3</sup>Category D, 800-2¼.  
<sup>4</sup>NA when control tower closed except for operators with approved weather reporting service.  
<sup>5</sup>Category C, 1000-3; Category D, 1400-3.

**SILVER CITY, NM**

GRANT COUNTY (SVC).....**RNAV (GPS) Rwy 26<sup>1</sup>**  
**VOR-A<sup>2</sup>**

<sup>1</sup>NA when local weather not available.  
<sup>2</sup>NA when Deming FSS closed.

**STERLING, CO**

STERLING MUNI (STK).....**RNAV (GPS) Rwy 15**  
**RNAV (GPS) Rwy 33**

NA when local weather not available.  
Category D, 800-2¼.

**TAOS, NM**

TAOS REGIONAL (SKX).....**RNAV (GPS) Rwy 13<sup>1</sup>**  
**VOR/DME-B<sup>2</sup>**

<sup>1</sup>Category C, 900-2½; Category D, 1000-3.  
<sup>2</sup>Categories A, B, 1000-2; Category C, 1000-2¾; Category D, 1000-3.

**TELLURIDE, CO**

TELLURIDE RGNL (TEX).....**LOC Rwy 9<sup>1</sup>**  
**RNAV (GPS) Y Rwy 9<sup>2</sup>**  
**RNAV (GPS) Z Rwy 9<sup>1</sup>**  
**VOR/DME-A<sup>3</sup>**

<sup>1</sup>Categories A, B, 2300-2.  
<sup>2</sup>Categories A, B, 3100-2.  
<sup>3</sup>Categories A, B, 3400-6.  
<sup>4</sup>Categories A, B, 2600-2; Category C, 2600-3.

**TRINIDAD, CO**

PERRY STOKES (TAD).....**RNAV (GPS) Rwy 3<sup>1</sup>**  
**RNAV (GPS) Rwy 21<sup>23</sup>**

<sup>1</sup>Category D, 800-2½.  
<sup>2</sup>Category D, 900-2¾.  
<sup>3</sup>NA when local weather not available.

**TRUTH OR CONSEQUENCES, NM**

TRUTH OR CONSEQUENCES MUNI (TCS).....**VOR-A**  
Category D, 800-2¼.

**WRAY, CO**

WRAY MUNI (2V5).....**RNAV (GPS) Rwy 17**  
**RNAV (GPS) Rwy 35**

NA when local weather not available.  
Category C, 900-2½; Category D, 900-2¾.

03 DEC 2020 to 31 DEC 2020

03 DEC 2020 to 31 DEC 2020

(DAVVY2.DAVVY) 19059

# DAVVY TWO DEPARTURE (OBSTACLE) (RNAV)

AL-9146 (FAA)

LAKE COUNTY (LXV)  
LEADVILLE, COLORADO

ASOS  
118.375  
DENVER CENTER  
119.85 363.15  
UNICOM  
122.8 (CTAF)

△ DAVVY

346°  
(16)

◇ OLOWI

NOTE: GPS required.  
NOTE: RNAV 1.  
NOTE: RADAR required.

### TAKEOFF MINIMUMS

Rwy 16: NA, ATC.  
Rwy 34: Standard with minimum climb of 337' per NM to 13200.

### TAKEOFF OBSTACLE NOTES

Rwy 34: Pole 10' from DER, 26' left of centerline, 2' AGL/9932' MSL.  
Trees beginning 18' from DER, 462' right of centerline, up to 9949' MSL.

NOTE: Chart not to scale.

### DEPARTURE ROUTE DESCRIPTION

TAKEOFF RUNWAY 34: Climb direct OLOWI, then on track 346° to DAVVY, then on assigned route, maintain 16000.

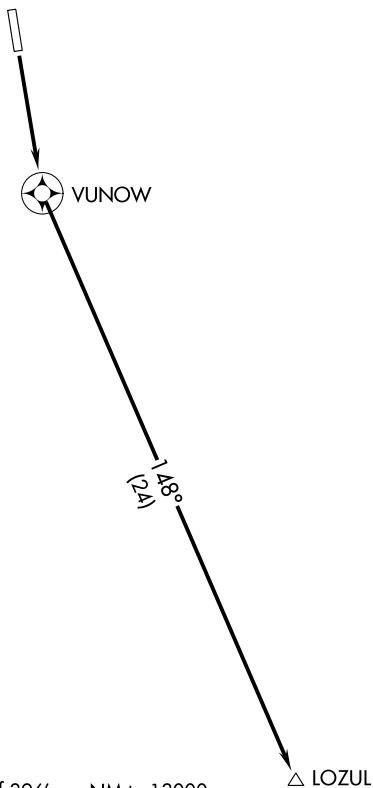
DAVVY TWO DEPARTURE (OBSTACLE) (RNAV)  
(DAVVY2.DAVVY) 28FEB19

LEADVILLE, COLORADO  
LAKE COUNTY (LXV)

SW-1, 03 DEC 2020 to 31 DEC 2020

SW-1, 03 DEC 2020 to 31 DEC 2020

ASOS  
118.375  
DENVER CENTER  
119.85 363.15  
UNICOM  
122.8 (CTAF)



NOTE: GPS required.  
NOTE: RNAV 1.  
NOTE: RADAR required.

TAKEOFF MINIMUMS

Rwy 16: Standard with minimum climb of 396' per NM to 13000.  
Rwy 34: NA, ATC.

TAKEOFF OBSTACLE NOTES

Rwy 16: Poles, signs beginning 9' from DER, 17' left of centerline, up to 2' AGL/9926' MSL.  
Pole 10' from DER, 17' right of centerline, 2' AGL/9926' MSL.  
Trees beginning 180' from DER, 516' left of centerline, up to 9948' MSL.  
Transmission line, poles beginning 499' from DER, 632' left of centerline, up to 101' AGL/9989' MSL.

NOTE: Chart not to scale.

DEPARTURE ROUTE DESCRIPTION

TAKEOFF RUNWAY 16: Climb direct VUNOW, then on track 148°, then on assigned route, maintain 16000.

SW-1, 03 DEC 2020 to 31 DEC 2020

SW-1, 03 DEC 2020 to 31 DEC 2020