

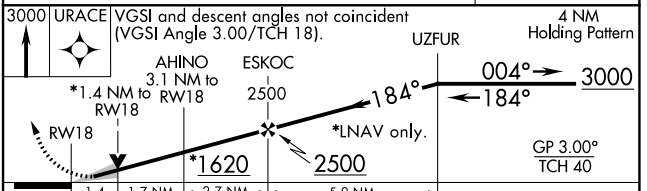
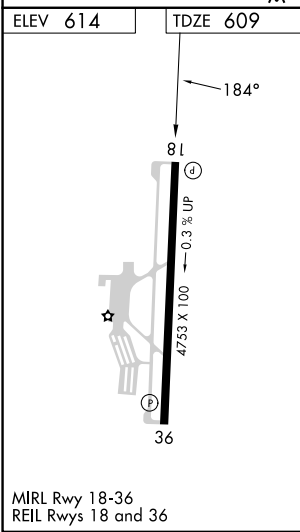
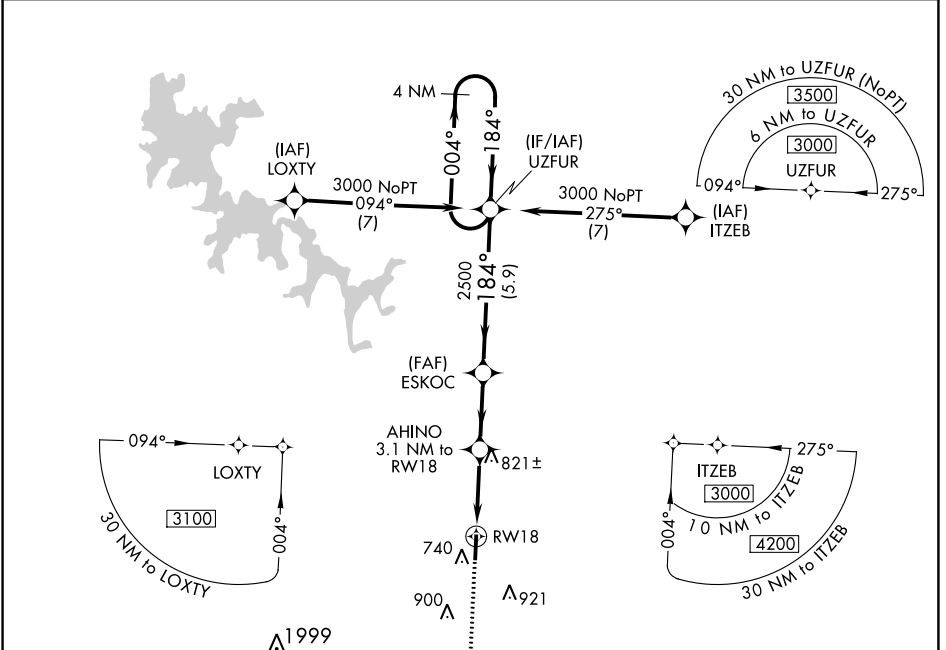
WAAS CH 48812 W18A	APP CRS 184°	Rwy Idg TDZE Apt Elev	4753 609 614
----------------------------------------	------------------------	-----------------------------	-----------------------------------------

RNAV (GPS) RWY 18

MURFREESBORO MUNI (MBT)

▽ For uncompensated Baro-VNAV systems, LNAV/VNAV NA below -16°C (4°F) or above 54°C (130°F). DME/DME RNP-0.3 NA. MISSED APPROACH: Climb to 3000 direct URACE and hold.

AWOS-3 133.975	NASHVILLE APP CON 118.4 360.7	GCO 135.075	UNICOM 123.075 (CTAF)
--------------------------	-----------------------------------------	-----------------------	---------------------------------



CATEGORY	A	B	C	D
LPV DA		859- ³ / ₄	250 (300- ³ / ₄)	NA
LNAV/VNAV DA		898- ⁷ / ₈	289 (300- ⁷ / ₈)	NA
LNAV MDA	1080-1	471 (500-1)	1080-1 ³ / ₈ 471 (500-1 ³ / ₈)	NA
C CIRCLING	1080-1	466 (500-1)	1280-1 ³ / ₄ 666 (700-1 ³ / ₄)	NA

SE-1, 22 FEB 2024 to 21 MAR 2024

SE-1, 22 FEB 2024 to 21 MAR 2024

WAAS CH 61332 W36A	APP CRS 004°	Rwy Idg TDZE Apt Elev	4753 614 614
----------------------------------------	------------------------	-----------------------------	-----------------------------------------

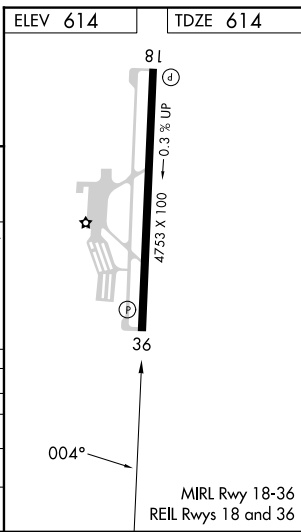
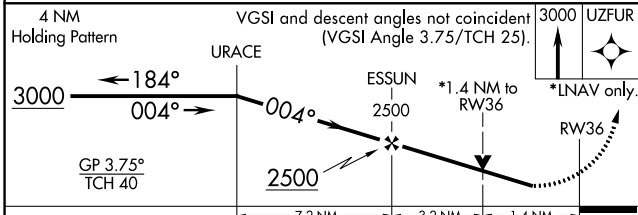
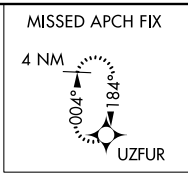
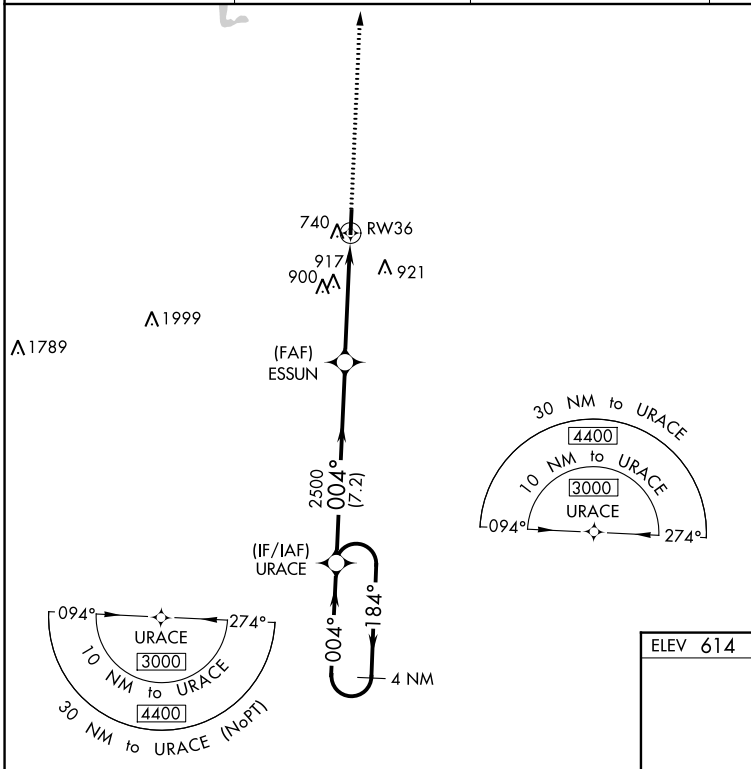
RNAV (GPS) RWY 36

MURFREESBORO MUNI (MBT)

▼ For uncompensated Baro-VNAV systems, procedure NA below -16° C (4°F) or above 54° C (130°F). Rwy 36 helicopter visibility reduction below ¼ SM NA. DME/DME RNP-0.3 NA.

MISSED APPROACH:
Climb to 3000 direct UZFUR and hold.

AWOS-3 133.975	NASHVILLE APP CON 118.4 360.7	GCO 135.075	UNICOM 123.075 (CTAF)
--------------------------	-----------------------------------------	-----------------------	---------------------------------



CATEGORY	A	B	C	D
LPV DA	914-7/8	300 (300-7/8)		NA
LNAV/VNAV DA	1030-1/8	416 (500-1/8)		NA
LNAV MDA	1180-1	566 (600-1)	1180-15/8 566 (600-15/8)	NA
C CIRCLING	1180-1	566 (600-1)	1280-13/4 666 (700-13/4)	NA

SE-1, 22 FEB 2024 to 21 MAR 2024

SE-1, 22 FEB 2024 to 21 MAR 2024