

WAAS CH 99529 W26A	APP CRS 262°	Rwy Idg 3501 TDZE 741 Apt Elev 741
--	------------------------	---

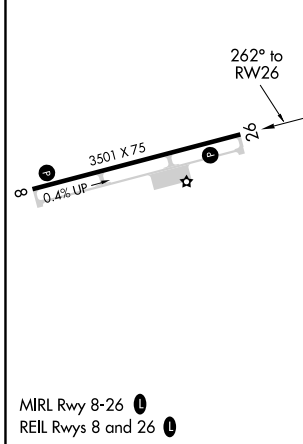
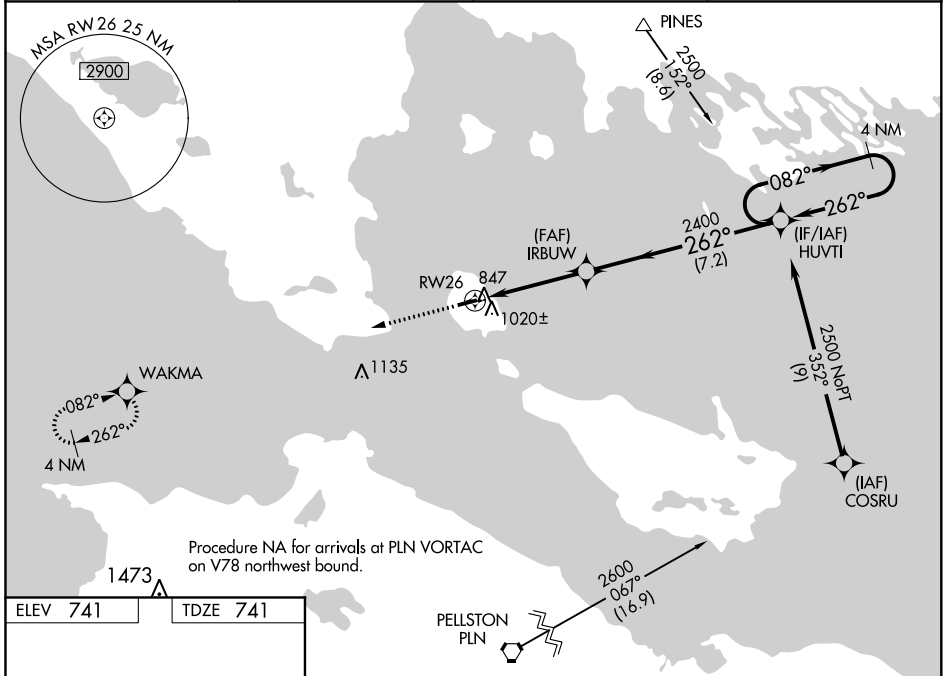
RNAV (GPS) RWY 26

MACKINAC ISLAND (MCD)

⚠ Baro-VNAV NA when using Pellston altimeter setting. For uncompensated Baro-VNAV systems, LNAV/VNAV NA below -16°C (4°F) or above 54°C (130°F). When local altimeter setting not received, use Pellston altimeter setting and increase all DA 47 feet and all MDA 60 feet, increase LNAV Cat C visibility 1/8 mile and Circling Cat C visibility 1/4 mile. DME/DME RNP-0.3 NA. Helicopter visibility reduction below 1 SM NA. Night landing: Rwy 8 NA.

MISSED APPROACH:
Climb to 2500 direct WAKMA and hold.

AWOS-3 118.275	MINNEAPOLIS CENTER 134.6 354.05	UNICOM 122.7 (CTAF)	122.80
--------------------------	---	-------------------------------	---------------



ELEV 741	TDZE 741	2500 WAKMA		4 NM Holding Pattern
IRBUW 2400		HUVTI		GP 3.70° TCH 40
RW26		262°		2400
4.1 NM		7.2 NM		
CATEGORY	A	B	C	D
LPV DA	1058-1	317 (400-1)		NA
LNAV/VNAV DA	1182-1 3/8	441 (500-1 3/8)		NA
LNAV MDA	1280-1	539 (600-1)	1280-1 1/2 539 (600-1 1/2)	NA
C CIRCLING	1320-1	579 (600-1)	1320-1 1/2 579 (600-1 1/2)	NA

WAAS CH 63129 W08A	APP CRS 082°	Rwy Idg 3501 TDZE 739 Apt Elev 741
--	------------------------	---

RNAV (GPS) RWY 8

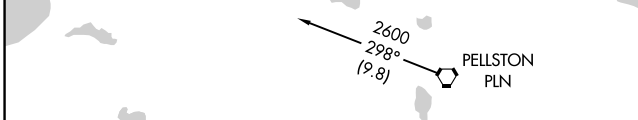
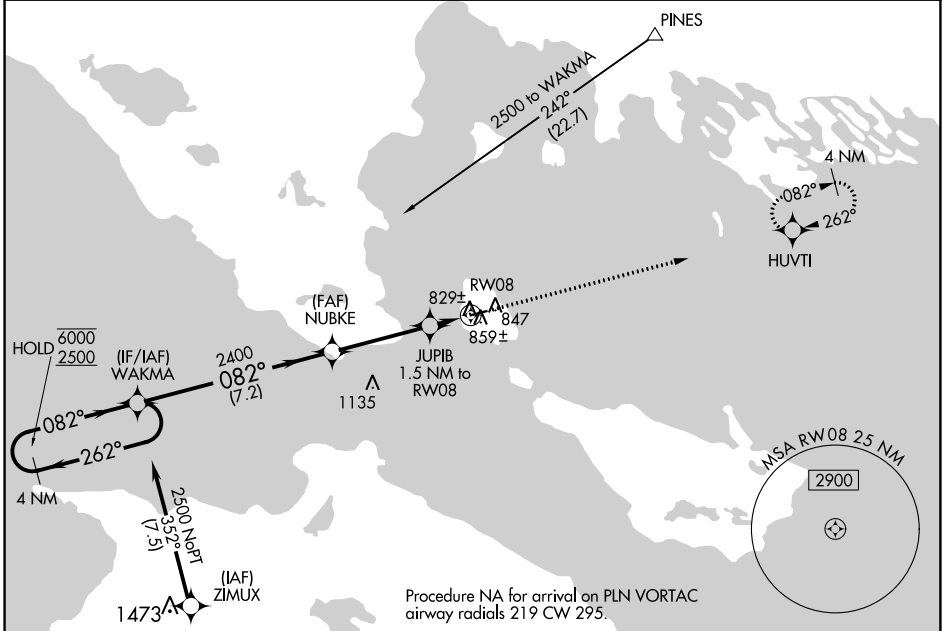
MACKINAC ISLAND (MCD)

RNP APCH.

▼ Rwy 8 helicopter visibility reduction below 1 SM NA. When local altimeter setting not received, use Pellston altimeter setting and increase all MDA 60 feet, increase LP and LNAV Cat C visibility 1/8 SM and Circling Cat C visibility 1/4 SM. Straight-in and Circling Rwy 8 NA at night.

▲ MISSED APPROACH: Climb to 2500 direct HUVTI and hold.

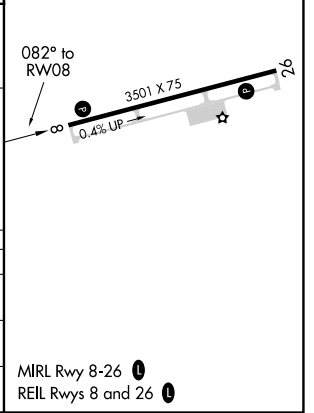
AWOS-3 118.275	MINNEAPOLIS CENTER 134.6 354.05	UNICOM 122.7 (CTAF)	122.8
--------------------------	---	-------------------------------	--------------



ELEV 741	TDZE 739
----------	----------

4 NM Holding Pattern	WAKMA	Visual Segment - Obstacles.	2500	HUVTI
6000 2500	← 262° → 082°	NUBKE	↑	☀
	082°	JUIB 1.5 NM to RW08		082° to RW08
	2400	RW08		3501 X.75
	7.2 NM	3.6 NM	1.5	0.4% UP

CATEGORY	A	B	C	D
LP MDA	1080-1 341 (400-1)			NA
LNAV MDA	1120-1	381 (400-1)	1120-1 1/8 381 (400-1 1/8)	NA
C CIRCLING	1320-1	579 (600-1)	1320-1 1/2 579 (600-1 1/2)	NA



EC-1, 19 MAY 2022 to 16 JUN 2022

EC-1, 19 MAY 2022 to 16 JUN 2022

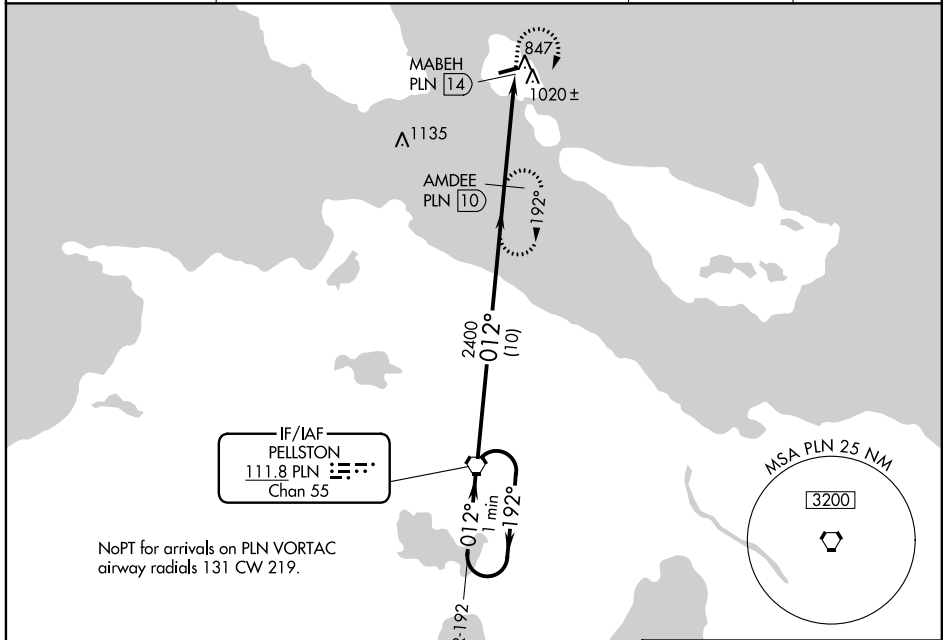
VORTAC PLN 111.8 Chan 55	APP CRS 012°	Rwy Idg TDZE Apt Elev N/A N/A 741
---------------------------------------	------------------------	---

VOR/DME-A
MACKINAC ISLAND (MCD)

⚠ When local altimeter setting not received, use Pellston altimeter setting and increase all MDA 60 feet, increase Cat C visibility ¼ mile.
 ⚠ Visibility reduction by helicopters NA. Night landing: Rwy 8 NA.

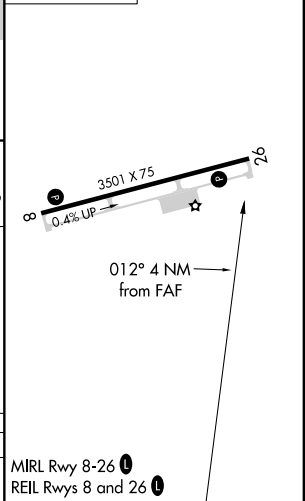
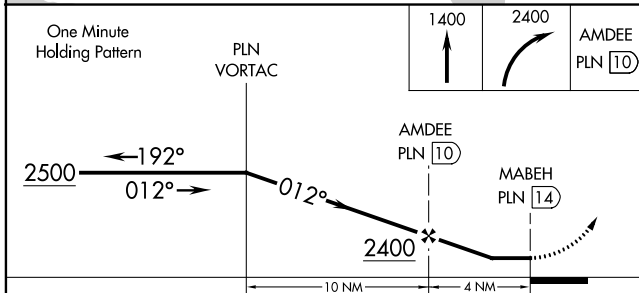
MISSED APPROACH: Climb to 1400 then climbing right turn to 2400 direct AMDEE 10 DME and hold.

AWOS-3 118.275	MINNEAPOLIS CENTER 134.6 354.05	UNICOM 122.7 (CTAF)	122.8
--------------------------	---	-------------------------------	--------------



NoPT for arrivals on PLN VORTAC airway radials 131 CW 219.

ELEV 741



CATEGORY	A	B	C	D
CIRCLING	1320-1	579 (600-1)	1320-1½ 579 (600-1½)	NA

EC-1, 19 MAY 2022 to 16 JUN 2022

EC-1, 19 MAY 2022 to 16 JUN 2022