

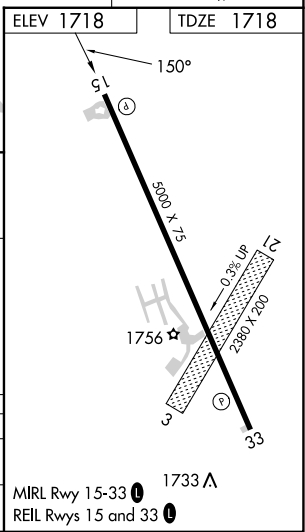
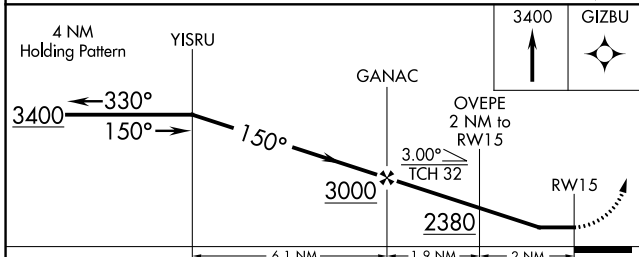
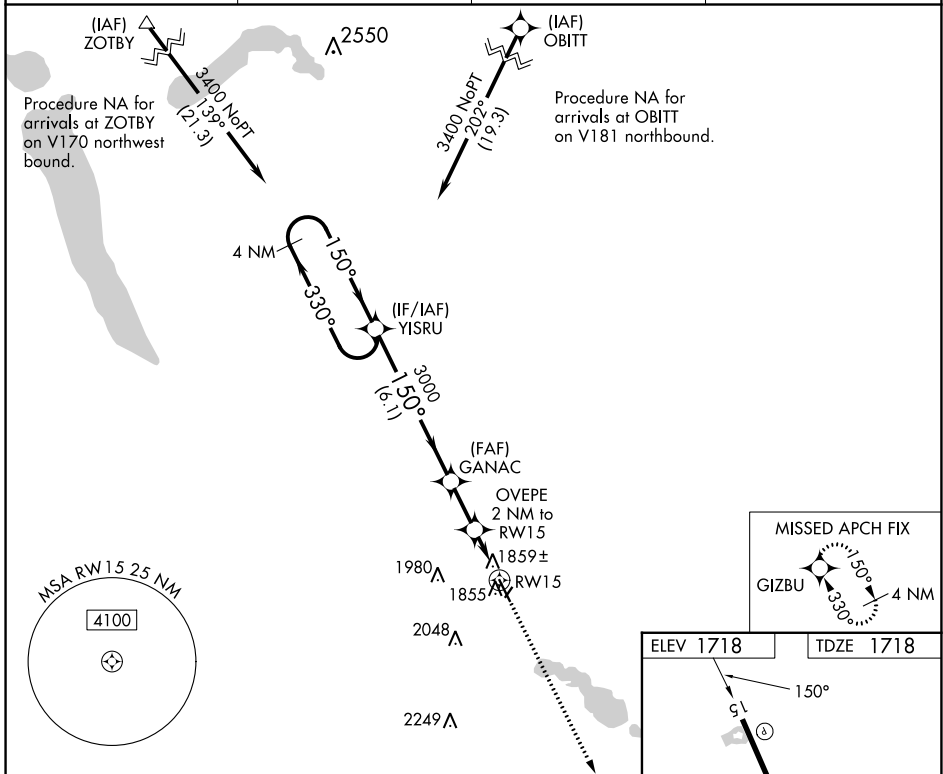
APP CRS	Rwy Idg	<b>5000</b>
<b>150°</b>	TDZE	<b>1718</b>
	Apt Elev	<b>1718</b>

# RNAV (GPS) RWY 15

MADISON MUNI (MDS)

RNP APCH - GPS.		MISSED APPROACH: Climb to 3400 direct GIZBU and hold.
<p>▼ Circling NA to Rwys 3 and 21. Rwy 15 helicopter visibility reduction below 3/4 SM NA.</p> <p>▲ When local altimeter setting not received, use Brookings altimeter setting: increase all MDAs 60 feet and visibility LNAV and Circling Cat C and D 1/4 SM.</p>		

AWOS-3 <b>118.35</b>	MINNEAPOLIS CENTER <b>132.05 317.4</b>	GCO <b>121.725</b>	UNICOM <b>122.8 (CTAF) 0</b>
-------------------------	---	-----------------------	---------------------------------



CATEGORY	A	B	C	D
LNAV MDA	2120-1	402 (500-1)	2120-1 1/8	402 (500-1 1/8)
CIRCLING	2180-1	462 (500-1)	2400-2	2400-2 1/4
			682 (700-2)	682 (700-2 1/4)

NC-1, 22 FEB 2024 to 21 MAR 2024

NC-1, 22 FEB 2024 to 21 MAR 2024

WAAS CH <b>58321</b> <b>W33A</b>	APP CRS <b>330°</b>	Rwy Idg TDZE Apt Elev	<b>5000</b> <b>1713</b> <b>1718</b>
--	------------------------	-----------------------------	---

# RNAV (GPS) RWY 33

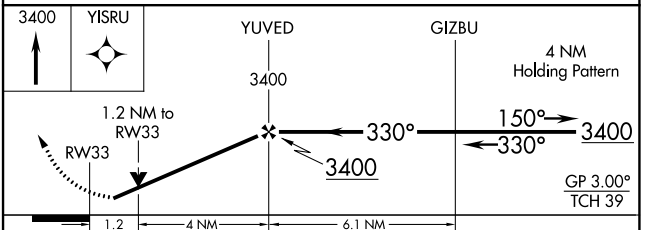
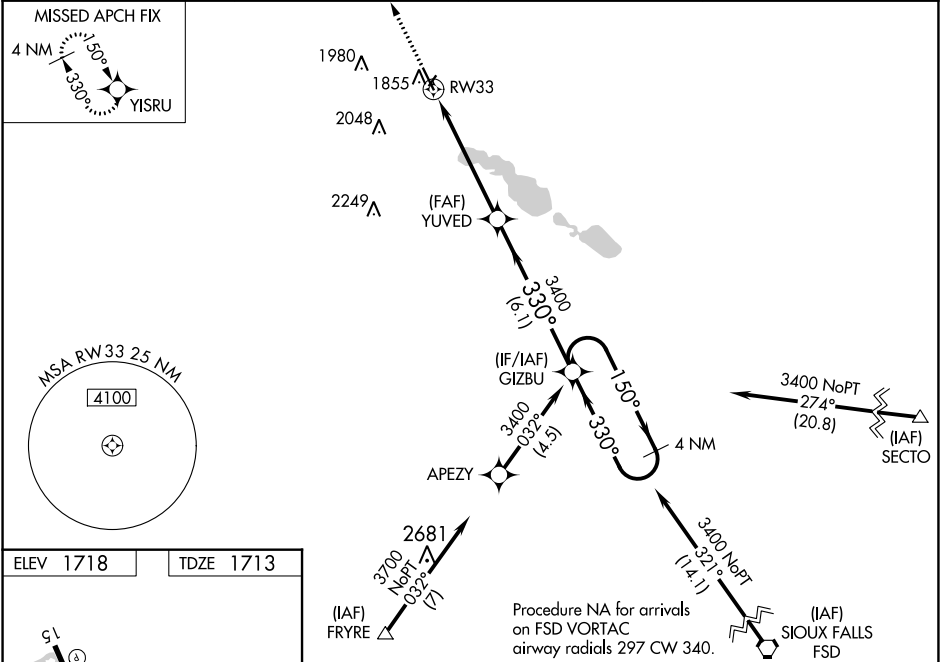
MADISON MUNI (MDS)

RNP APCH - GPS.

⚠ For uncompensated Baro-VNAV systems, LNAV/VNAV NA below -18°C or above 33°C. Rwy 33  
 ⚠ helicopter visibility reduction below 3/4 SM NA. When local altimeter setting not received, use Brookings  
 altimeter setting: increase LPV DA to 2021 feet; increase LNAV/VNAV DA to 2071 feet and all  
 visibilities 1/4 SM; increase all MDAs 60 feet and visibility LNAV and Circling Cats C and D 1/4 SM.  
 Circling NA to Rwy 3 and 21. Baro-VNAV NA when using Brookings altimeter setting.

MISSED APPROACH:  
Climb to 3400 direct  
YISRU and hold.

AWOS-3 <b>118.35</b>	MINNEAPOLIS CENTER <b>132.05 317.4</b>	GCO <b>121.725</b>	UNICOM <b>122.8 (CTAF)</b> 📻
-------------------------	---	-----------------------	---------------------------------



CATEGORY	A	B	C	D
LPV DA	1963-1 250 (300-1)			
LNAV/VNAV DA	2013-1 300 (300-1)			
LNAV MDA	2120-1	407 (500-1)	2120-1 1/8	407 (500-1 1/8)
CIRCLING	2180-1	462 (500-1)	2400-2 682 (700-2)	2400-2 1/4 682 (700-2 1/4)

NC-1, 22 FEB 2024 to 21 MAR 2024

NC-1, 22 FEB 2024 to 21 MAR 2024