


COPTER VOR RWY 29

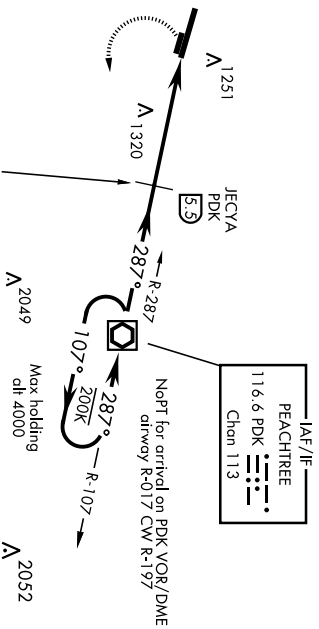
VOR/DME PDK 116.6 Chon 113	APCH CRS 287°	Rwy Idg TDZE Arpt Elev 10,002 1014 1068
--	-------------------------	---

AL-959 [USAF]

DOBBIENS ARB (KMGE)

▲	SALS 	MISSED APPROACH: Climbing left turn to 4000 direct PDK VOR/DME and hold.
----------	--	--

ATIS ★ 269.5	ATLANTA APP CON 121.0 268.7	DOBBIENS TOWER ★ 120.75 370.875	GND CON 125.3 275.8	ASR
------------------------	---------------------------------------	---	-------------------------------	-----



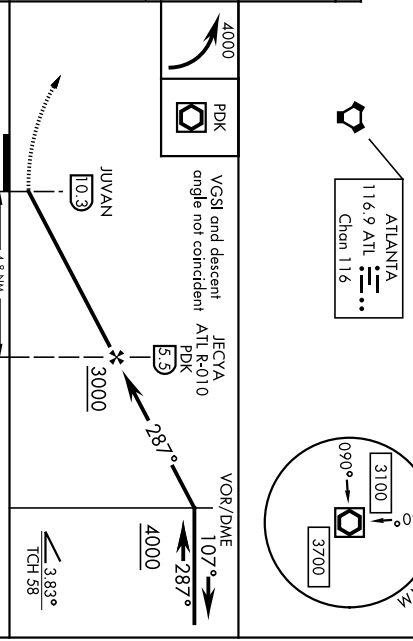
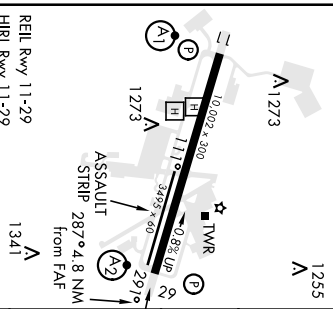
SE-4, 04 JAN 2018 to 01 FEB 2018

SE-4, 04 JAN 2018 to 01 FEB 2018

NOT FOR CIVIL USE

EMERG SAFE ALT 100 NM 7700

ELEV 1068	TDZE 1014	1255
-----------	-----------	------



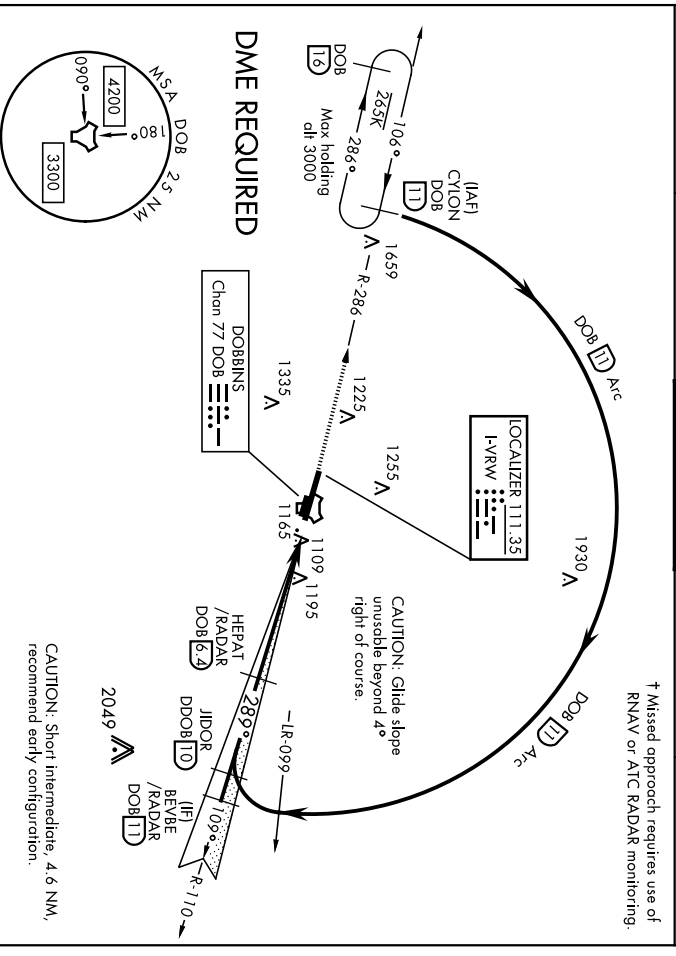
REIL Rwy 11-29 HIRL Rwy 11-29 1341	FAF to MAP 4.8 NM	CATEGORY	COPITER
Knots 45 60 75 90 105	Min/Sec 6:24 4:48 3:50 3:12 2:44	H-29	1580/20 566 (600-3%)

MARIETTA, GEORGIA DOBBIENS ARB (KMGE)
 And/ 6 05FEB15
 COPTER VOR RWY 29

LOC I-RVW 111.35	APCH CRS 289°	Rwy Idg TDZE Arpt Elev	10,002 1014 1068	AL-959 [USAF]	SALS 	† MISSED APPROACH: Climb to 3000 via DOB R-286 to CYNON and hold.
ATIS * 269.5	ATLANTA APP CON 121.0 268.7	DOBBSINS TOWER * 120.75 370.875	GND CON 125.3 275.8	ASR	DOBBSINS ARB (KMGE)	

▼ * When ALS inop, increase CAT AB RVR to 55 and vis to 1 mile, CAT CDE vis to 1 3/8 miles.
 ** Circling not authorized N of Rwy 11-29 for CAT DE aircraft. Circling to assault strip not authorized.

† Missed approach requires use of RNAV or ATC RADAR monitoring.



DME REQUIRED

EMERG SAFE ALT 100 NM NM 7700

3000 DOB R-286	CYNON DOB TD	JIDOR R-110 TD	BEVBE R-110 TD /RADAR	CYNON R-286 TD	ELEV 1068	TDZE 1014
<p>TACAN HIDIT [8] HEPAT [6,2] /RADAR 2933 3000 GS 3.00° TCH 39</p>					<p>1255 A</p>	
CATEGORY	A	B	C	D	E	
SLIS 29	121.4/40		200	1200-3/4		
S-LOC 29*	1500/40	486 (500-3/4)	1500/60	486	(500-1 1/2)	
CIRCLING **	1660-1	592 (600-1)	1680-1 3/4	1680-2	1680-2 1/2	
			612 (700-1 3/4)	612 (700-2)	612 (700-2 1/2)	
FAF to MAP 5.5 NM			REIL Rwy 11-29			289° 6 NM from FAF
Knots			HIRL Rwy 11-29			
60			5.30			
90			3.40			
120			2.45			
150			2:12			
180			1:50			

CAUTION: Short Intermediate, 4.6 NM, recommend early configuration.

APCH CRS 109°	Rwy Idg TDZE Arpt Elev	10,002 1068 1068
-------------------------	------------------------------	---

AL-959 (USAF)

DOBBINS ARB (KMGE)

⚠ * When ALS inop, increase CAT AB RVR to 55 and vis to 1 mile, CAT CDE vis to 1 1/2 miles.
 ** Circling NA N of Rwy 11-29 for CAT DE aircraft. Circling to assault strip NA.

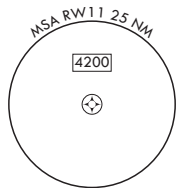
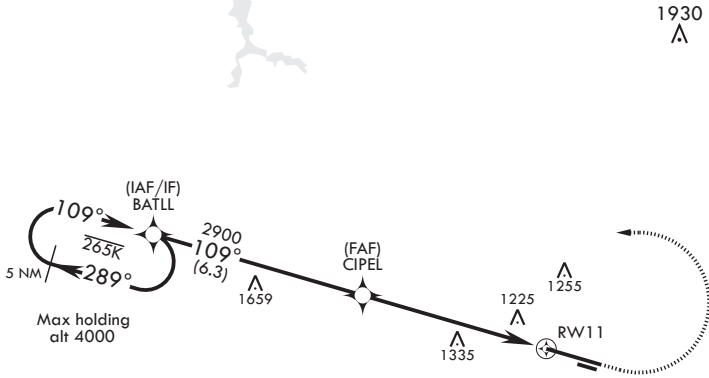
ALSF-1 

† MISSED APPROACH: Climb to 2000 then climbing left turn to 3000 direct BATLL and hold.

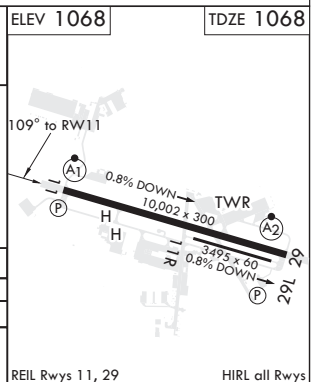
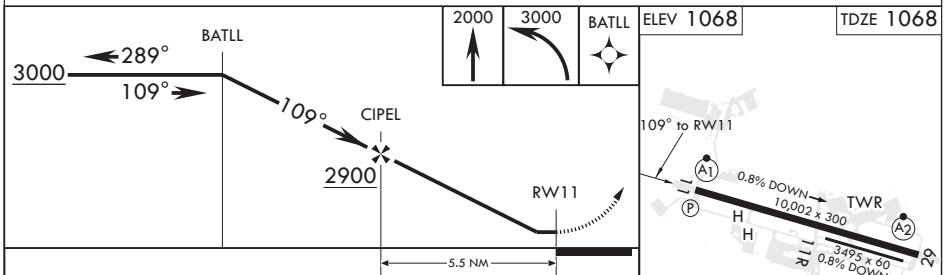
ATIS 269.5	ATLANTA APP CON 121.0 268.7	TOWER 120.75 370.875	GND CON 125.3 275.8
----------------------	---------------------------------------	--------------------------------	-------------------------------

DME/DME RNP-0.3 NA

† Missed approach requires use of RNAV or ATC RADAR monitoring.



EMERG SAFE ALT 100 NM 7700



CATEGORY	A	B	C	D	E
LNAV MDA*	1600/40 532 (600-3/4)		1600/55	532	(600-1)
C CIRCLING**	1660-1 592 (600-1)		1680-1 3/4 612 (700-1 3/4)	1680-2 612 (700-2)	1680-2 1/4 612 (700-2 1/4)

REIL Rws 11, 29

HIRL all Rws

SE-4, 04 JAN 2018 to 01 FEB 2018

SE-4, 04 JAN 2018 to 01 FEB 2018

MARIETTA, GEORGIA

RNAV (GPS) RWY 29

APCH CRS	Rwy Idg	10,002
289°	TDZE	1014
	Arpt Elev	1068

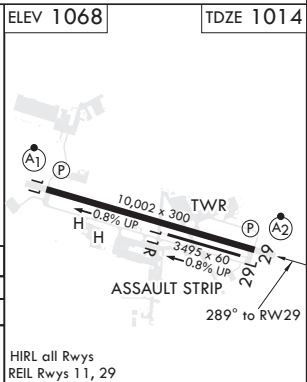
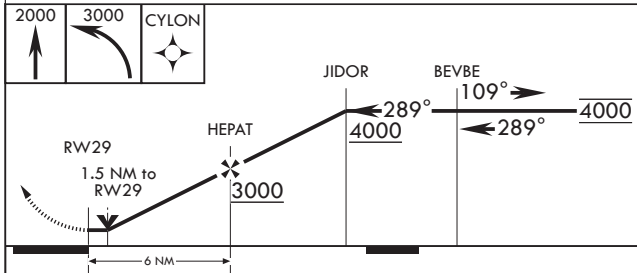
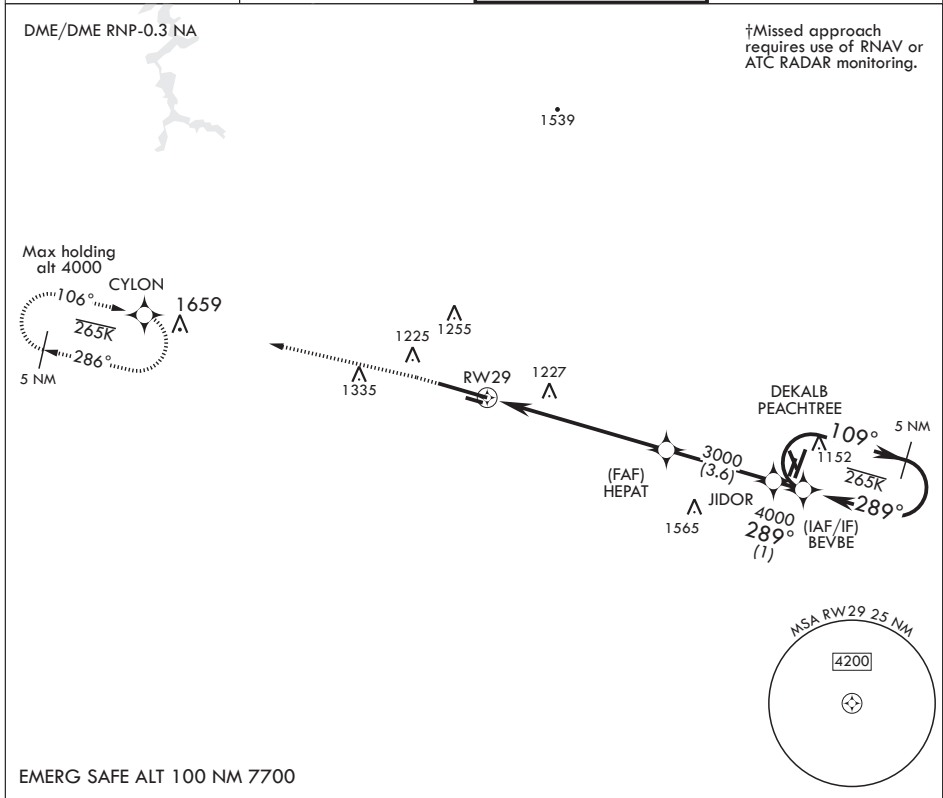
AL-959 (USAF)

DOBBINS ARB (KMGE)

⚠ * When ALS inop, increase CAT AB RVR to 55 and vis to 1 mile, CAT CDE vis to 1 1/2 miles.
 ** Circling not authorized N of Rwy 11-29 for CAT DE. Circling to assault strip not authorized.

SALS (A2) † MISSED APPROACH: Climb to 2000 then climbing left turn to 3000 direct CYLON and hold.

ATIS 269.5	ATLANTA APP CON 121.0 268.7	TOWER 120.75 370.875	GND CON 125.3 275.8
---------------	--------------------------------	-------------------------	------------------------



CATEGORY	A	B	C	D	E
LNAV MDA*	1540/40 526 (500-3/4)	1540-1 1/4 526	(500-1 1/4)		
CIRCLING**	1660-1 592 (600-1)	1680-1 3/4 612 (700-1 3/4)	1680-2 612 (700-2)	1680-2 1/4 612 (700-2 1/4)	

MARIETTA, GEORGIA

33°55'N - 84°31'W

DOBBINS ARB (KMGE)

Orig 22JUN17

RNAV (GPS) RWY 29

SE-4, 04 JAN 2018 to 01 FEB 2018

SE-4, 04 JAN 2018 to 01 FEB 2018

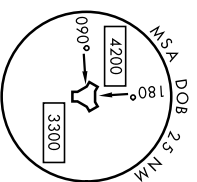
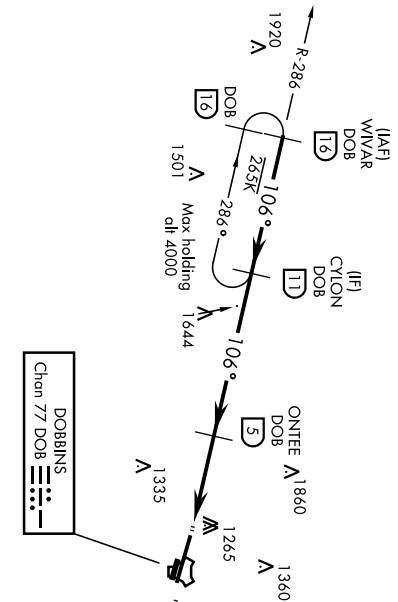
MARIETTA, GEORGIA

TACAN Rwy 11
15176

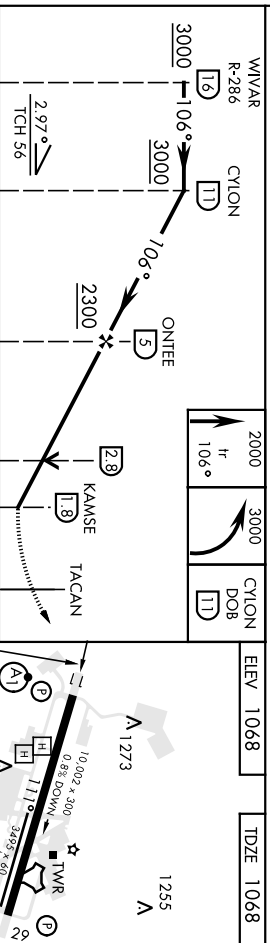
TACAN DOB Chan 77	APCH CRS 106°	Rwy Idg TDZE Arpt Elev	10,002 1068 1068	AL-959 [USAF]	ALST-1 A1	MISSED APPROACH: Climb to 2000 on track 106°, then climbing left turn to 3000, intercept DOB R-286 to CYLON and hold.
----------------------	------------------	------------------------------	------------------------	---------------	--------------	---

ATIS * 269.5	ATLANTA APP CON 121.0 268.7	DOBBINS TOWER * 120.75 370.875	GND CON 125.3 275.8	ASR
-----------------	--------------------------------	-----------------------------------	------------------------	-----

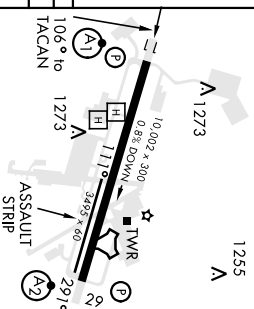
** Circling not authorized N of Rwy 11-29 for CAT D,E aircraft.
 † Missed approach requires use of RNAV or ATC RADAR monitoring.



EMERG SAFE ALT 100 NM 7700



CATEGORY	A	B	C	D	E
S-11*	1600/40 532 (600-¾)	1600/55 532 (600-1)	1680-1¾ 612 (700-1¾)	1680-2 612 (700-2)	1680-2¼ 612 (700-2¼)
** CIRCLING	1660-1 592 (600-1)				



MARIETTA, GEORGIA
 Amhd 5 05FEB15
 33°55'N-84°31'W
 DOBBINS ARB (KMGE)
 TACAN Rwy 11

MARIETTA, GEORGIA

TACAN RWY 29

15176

TACAN DOB Chan 77	APCH CRS 291°	Rwy Idg TDZE 1014 Arpt Elev 1068
----------------------	------------------	--

AL-959 [USAF]

DOBIBNS ARB (KMGE)

- ▼ * When ALS inop, increase CAT AB RVR to 55 and vis to 1 mile, CAT CDE vis to 1 1/2 miles.
- ** Circling not authorized N of Rwy 11-29 for CAT DE aircraft. Circling to assault strip not authorized.

SALS
A2

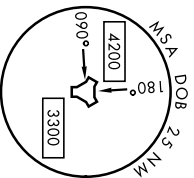
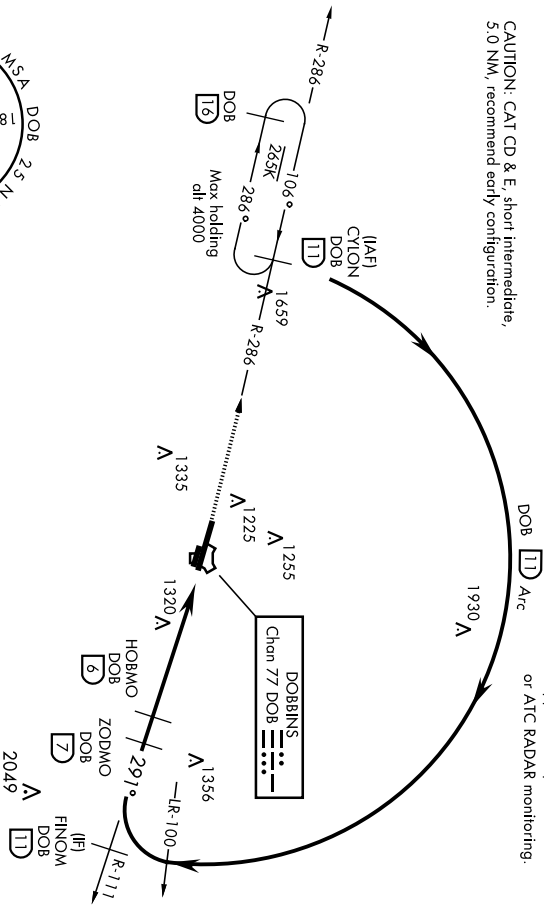
† MISSED APPROACH: Climb to 3000 via DOB R-286 to CYION and hold.

ATIS * 269.5	ATLANTA APP CON 121.0 268.7	DOBIBNS TOWER * 120.75 370.875
-----------------	--------------------------------	-----------------------------------

GND CON 125.3 275.8	ASR
------------------------	-----

CAUTION: CAT CD & E, short intermediate, 5.0 NM, recommend early configuration.

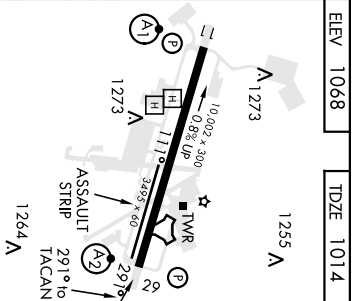
† Missed approach requires use of RNAV or ATC RADAR monitoring.



EMERG SAFE ALT 100 NM 7700

3000 DOB R-286 CYION DOB DOB (11)	VSGL and Descent Angle not coincident	FINOM R-111 DOB (11)	CYION R-286 DOB (11)
TACAN ACUI (21) 9 5.5 NM 5.1 NM	HOBMO DOB (6) ZODMO DOB (7) 3200 3500 TCH 58 3.61°	Arc DOB (11)	4000 4000

CATEGORY	A	B	C	D	E
S-29 *	1380/40	566 (600-3/4)	1580-13/8	566 (600-13/8)	
CIRCLING **	1660-1	592 (600-1)	1680-13/4 612 (700-13/4)	1680-2 612 (700-2)	1680-2 1/4 612 (700-2 1/4)



REIL Rwy 11-29
HIRL Rwy 11-29

MARIETTA, GEORGIA
Amhd 5 05FEB15

DOBIBNS ARB (KMGE) TACAN RWY 29