

MINOT, NORTH DAKOTA

COPTER RNAV (GPS) RWY 12

WAAS CH 71280 W12A	APCH CRS 118°	Rwy ldg 13,198
		TDZE 1666
		Arpt Elev 1666

AL-5013 (USAF)

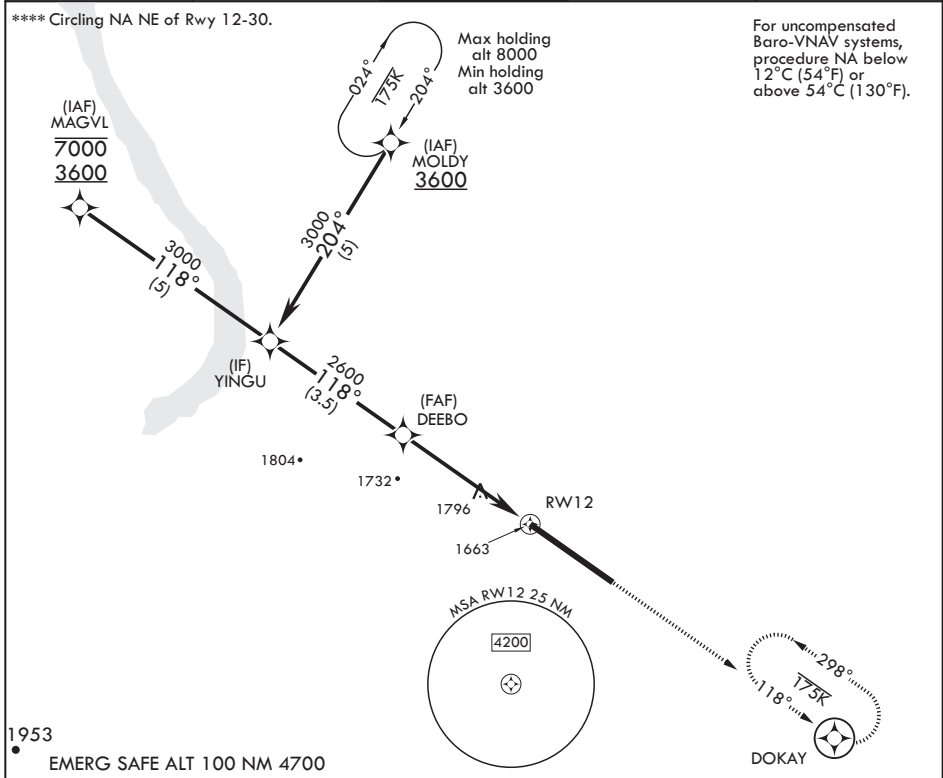
MINOT AFB (KMIB)

* When ALS inop, increase CAT A RVR to 40, vis to 3/4 mile.
 ** When ALS inop, increase CAT A vis to 1 5/8 miles.
 *** When ALS inop, increase CAT A RVR to 55, vis to 1 mile.



MISSED APPROACH: Climb to 3600 direct DOKAY and hold.

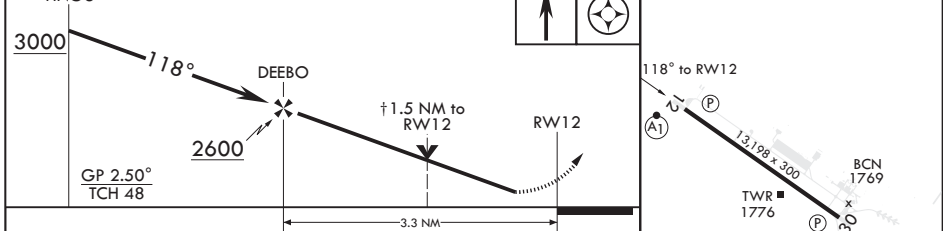
ATIS * 278.8	APP CON 119.6 363.8	TOWER * 120.65 253.5	GND CON 134.0 275.8	CLNC DEL 326.2
-----------------	------------------------	-------------------------	------------------------	-------------------



NC-1, 22 FEB 2024 to 21 MAR 2024

NC-1, 22 FEB 2024 to 21 MAR 2024

YINGU	↑ LNAV only	3600	DOKAY	ELEV 1666	TDZE 1666
-------	-------------	------	-------	-----------	-----------



CATEGORY	COPTER		
LPV DA*	1866/24	200	(200-1/4)
LNAV/VNAV DA**	2077/60	411	(500-1 1/2)
LNAV MDA***	2100/24	434	(500-1/2)
C CIRCLING****	2120-1	454	(500-1)

HIRL all Rws

MINOT, NORTH DAKOTA

48°25'N - 101°21'W

MINOT AFB (KMIB)

Orig 19JUL18

COPTER RNAV (GPS) RWY 12

MINOT, NORTH DAKOTA

COPTER RNAV (GPS) RWY 30

WAAS CH 91355 W30A	APCH CRS 298°	Rwy ldg 13,198
		TDZE 1646
		Arpt Elev 1666

AL-5013 (USAF)

MINOT AFB (KMIB)

* When ALS inop, increase CAT A RVR to 40, vis to 3/4 mile.
 ** When ALS inop, increase CAT A vis to 1 5/8 miles.
 *** When ALS inop, increase CAT A RVR to 55, vis to 1 mile.



MISSED APPROACH: Climb to 2100 then climbing right turn to 3600 direct JUSDU and hold, continue climb-in-hold to 3600.

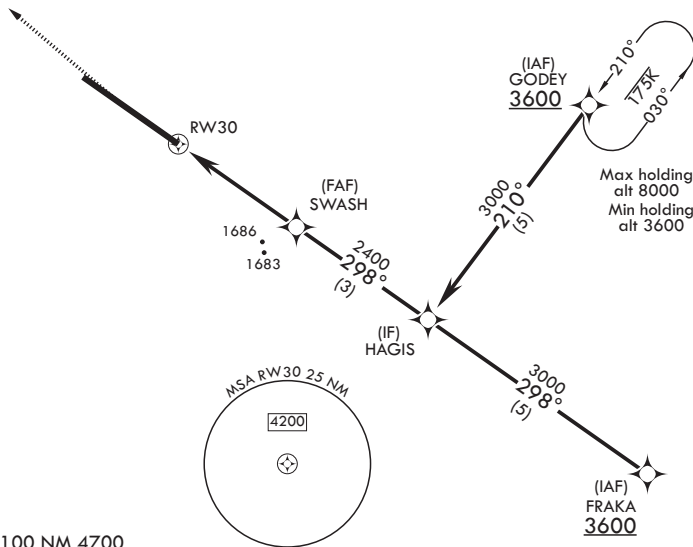
ATIS * 278.8	APP CON 119.6 363.8	TOWER * 120.65 253.5	GND CON 134.0 275.8	CLNC DEL 326.2
-----------------	------------------------	-------------------------	------------------------	-------------------

**** Circling NA NE of Rwy 12-30.

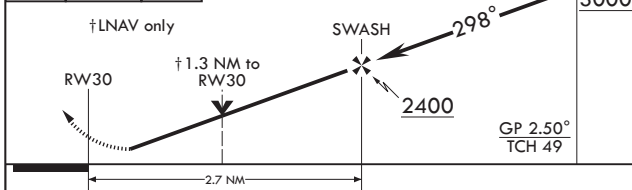
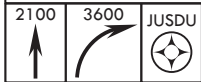
For uncompensated Baro-VNAV systems, procedure NA below 12°C (54°F) or above 54°C (130°F).



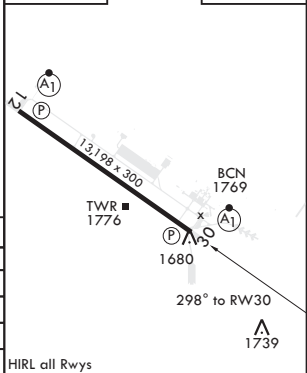
Max holding alt 6000
Min holding alt 3600



1874 EMERG SAFE ALT 100 NM 4700



ELEV 1666 TDZE 1646



CATEGORY	COPTER	
LPV DA*	1846/24	200 (200-1/4)
RNAV/VNAV DA**	2040/60	394 (400-1 1/2)
RNAV MDA***	2040/24	394 (400-1/2)
C CIRCLING****	2120-1	454 (500-1)

HIRL all Rwy's

MINOT, NORTH DAKOTA

48°25'N - 101°21'W

MINOT AFB (KMIB)

Orig 19JUL18

COPTER RNAV (GPS) RWY 30

NC-1, 22 FEB 2024 to 21 MAR 2024

NC-1, 22 FEB 2024 to 21 MAR 2024

TACAN MIB Chan 96	APCH CRS 125°	Pub/Idg TDZE 1666 Appl Elev 1666	AL-501.3 [USAF]
-------------------	---------------	-------------------------------------	-----------------

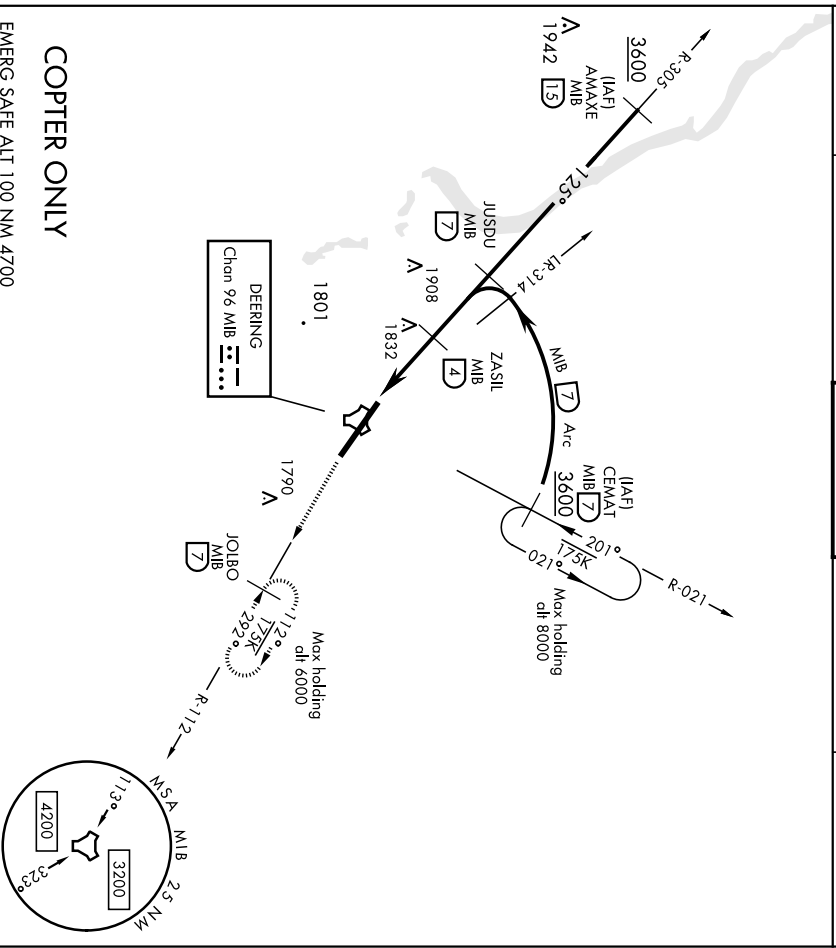
MINOT AFB (KMIB)

* When ALS hop, increase FVR to 28 and vis to ½ mile.



MISSED APPROACH: Climb to 3600 via MIB TACAN R-112 direct JOBO and hold.

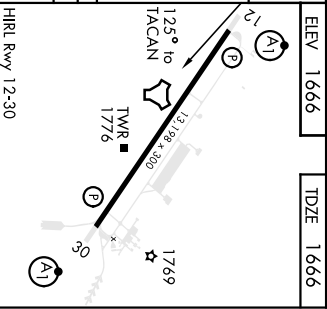
ATIS ★ 278.8	MINOT APP CON 119.6 363.8	MINOT TOWER ★ 120.65 253.5	GND CON 134.0 275.8	CINC DEL 326.2
--------------	---------------------------	----------------------------	---------------------	----------------



COPTER ONLY

EMERG SAFE ALT 100 NM 4700

JUSDU R-305 (7)	ZASIL (4)	ZEIOI (1D)	TACAN (7)	ELEV 1666	TDZE 1666
3000	2600	3600	3600		
2665° TCH 47	2.9 NM	MIB R-112 (7)	JOBO MIB (7)		
2665°	2				
3000	COPTER				
H-125°*	2100/12	434	(500-½)		



MINOT, NORTH DAKOTA

19227
COPTER TACAN 292°

TACAN MIB Chan 96	APCH CRS 292°	Raw Idg TDZE Elev	13 198 1646 1666
----------------------	------------------	-------------------------	------------------------

AI-501.3 (USAF)

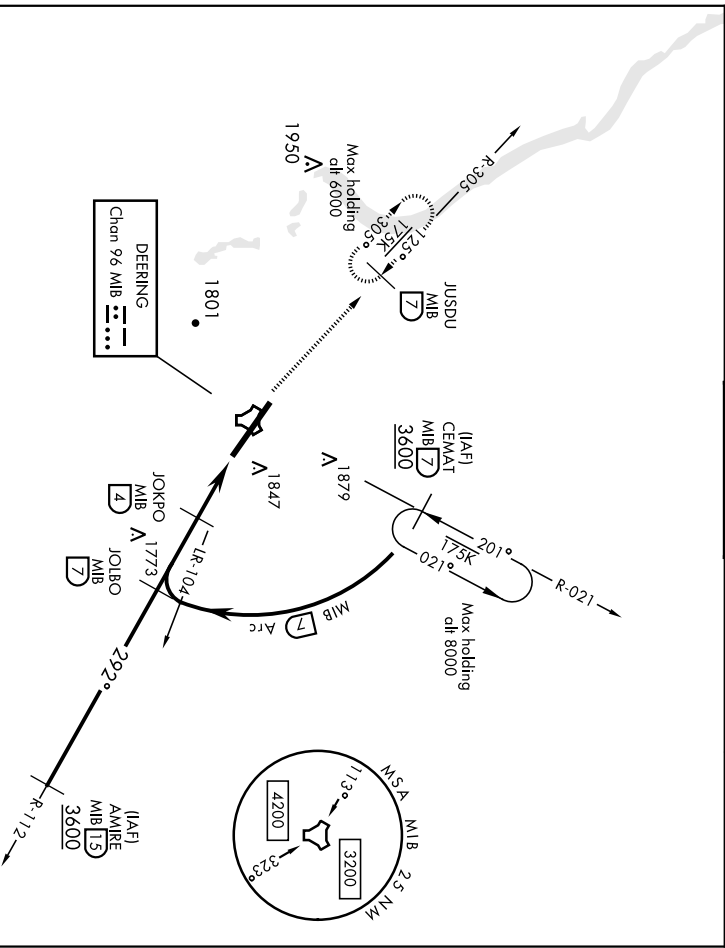
MINOT AFB (KMIB)

* When ALS hop, increase RVR to 28 and vis to ½ mile.



MISSED APPROACH: Climb to 3600 via MIB TACAN R-305 direct JUSDU and hold.

ATIS ★ 278.8	MINOT APP CON 119.6 363.8	MINOT TOWER ★ 120.65 253.5	GND CON 134.0 275.8	CINC DEL 326.2
-----------------	------------------------------	-------------------------------	------------------------	-------------------



COPTER ONLY

EMERG SAFE ALT 100 NM 4700

3600 MIB R-305	JUSDU MIB 7	JOUBO R-112 7	ELEV 1 666	TDZE 1 646
TACAN JULIAM 17	JOKPO 4	JOIAM R-112 7		
CATEGORY H-292° *			COPTER 2100/12 454 (500-¼)	
HIRL Rwy 12-30 292° to TACAN				

MINOT, NORTH DAKOTA
Orig 21 JUL16

48° 25' N - 101° 21' W

MINOT AFB (KMIB)

COPTER TACAN 292°

JAL-50113 (USAFA)

MINOT AFB (KMIB)

LOC I-MLW	APCH CRS	Rev/Idg	13 198
109.9	118°	TDZE	1666
		Appl Elev	1666

AISF-1	A1
--------	-----------

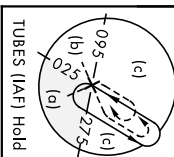
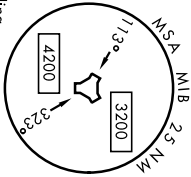
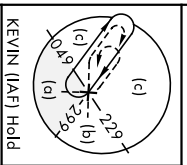
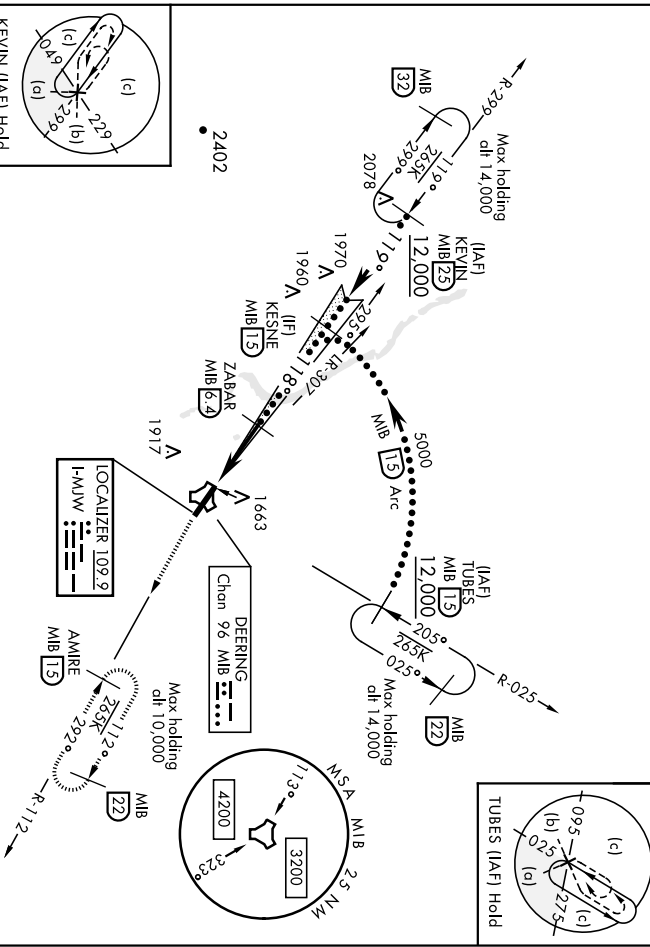
MISSED APPROACH: Climb to 5000 via MIB TACAN R-112 direct AMIRE and hold.

ATIS *	MINOT APP CON	119.6 363.8
--------	---------------	--------------------

MINOT TOWER *	120.65 253.5
---------------	---------------------

GND CON	134.0 275.8
---------	--------------------

CINC DEL	326.2
----------	--------------



RADAR or DME REQUIRED

EMERG SAFE ALT 100 NM 4700

CATEGORY	C	D	E
	1866/24	200	(200-1/2)
S-ILS 12*			
S-LOC 12**	2100/40	434	(500-3/4)
CIRCLING ***	2180-1-1/2	2220-2	554
	514 (600-1/2)		

ELEV	1666	TDZE	1666
118° 5.7 NM from FAF			
1769			
HIRL Rwy 12-30			
FAF to MAP 5.1 NM			
Knots	120	140	160
Mins:Sec	2:33	2:11	1:55
		1:42	1:32

MINOT, NORTH DAKOTA

48°25'N-101°21'W

MINOT AFB (KMIB)

Andt 1 25APR19

HILLS or LOC Z RWY 12

LOC -MIB	APCH CRS	Rwy Idg	13 198
109.9	TDZE	1646	
	Appl Elev	1666	

JAL-5013 (USAF)

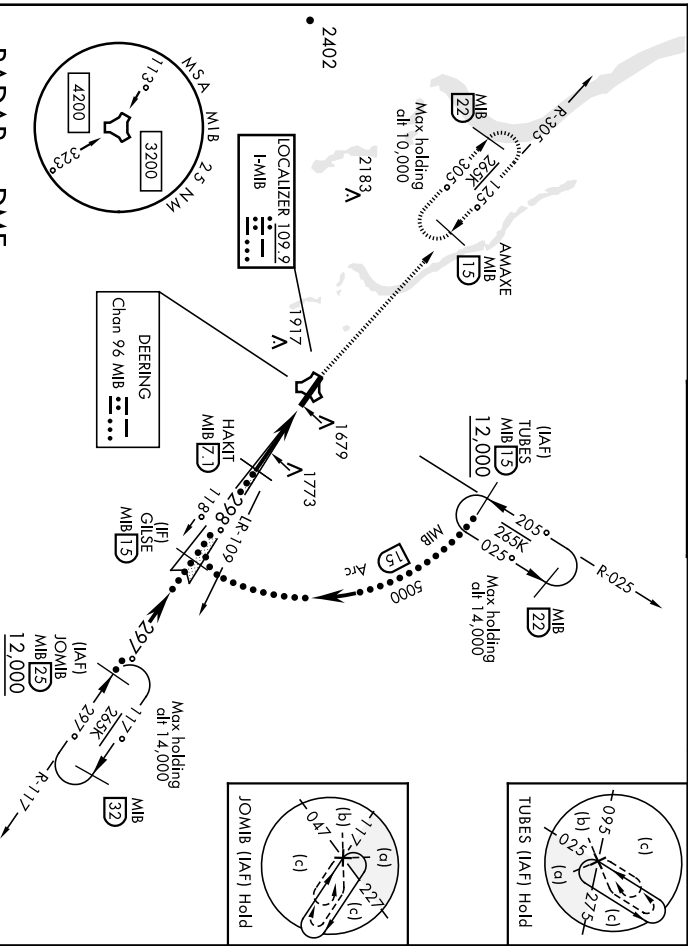
MINOT AFB (KMIB)

* When ALS Inop, increase CAT CDE RVR to 40 and vis to ¼ mile.
 *** When ALS Inop, increase CAT CDE RVR to 60, vis to 1½ mile,
 *** Circling Not Authorized N of Rwy 12-30.



MISSED APPROACH: Climb to 5000 via
 MIB TACAN R-305 direct AMAXE and hold.

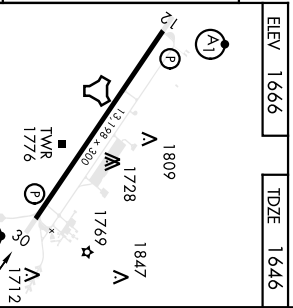
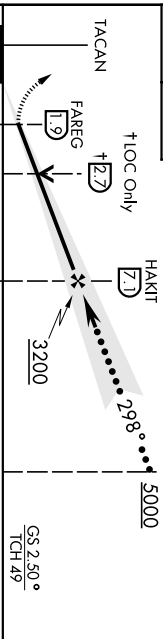
ATIS *	MINOT APP CON	MINOT TOWER *	GND CON	CINC DEL
278.8	119.6 363.8	120.65 253.5	134.0 275.8	326.2



RADAR or DME REQUIRED

EMERG SAFE ALT 100 NM 4700


5000 MIB R-305	AMAXE MIB 1S	GLISE R-117 MIB 1S	ELEV 1666	TDZE 1646
----------------	--------------	--------------------	-----------	-----------

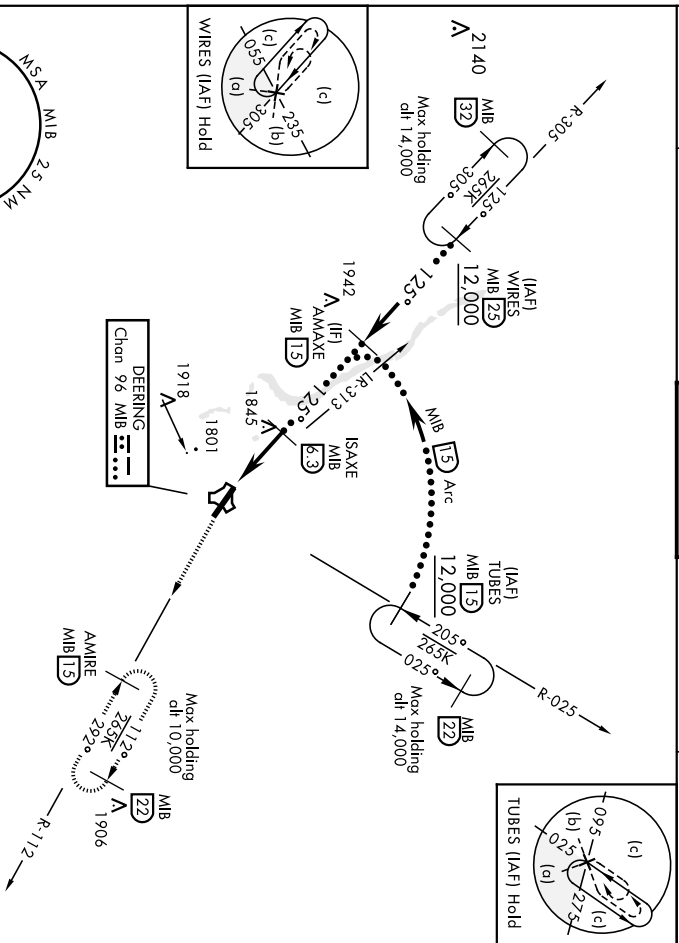


CATEGORY	C	D	E												
S-ILS 30 *	1846/24 200 (200-½)														
S-LOC 30 ***	2040/35 394 (400-%)														
CIRCLING ***	2180-1½ 514 (600-1½)	2220-2 554 (600-2)													
<table border="1"> <tr> <td>Mph</td> <td>120</td> <td>140</td> <td>160</td> <td>180</td> <td>200</td> </tr> <tr> <td>Sec</td> <td>2:36</td> <td>2:14</td> <td>1:57</td> <td>1:44</td> <td>1:34</td> </tr> </table>				Mph	120	140	160	180	200	Sec	2:36	2:14	1:57	1:44	1:34
Mph	120	140	160	180	200										
Sec	2:36	2:14	1:57	1:44	1:34										

MINOT, NORTH DAKOTA 48°25'N-101°21'W
 MINOT AFB (KMIB)
 Andt 1 25APR19

HILLS or LOC Z RWY 30

TACAN MIB Chan 96	APCH CRS 125°	Raw Idg TDZE 1666 Appt Elev 1666	ALSF-1 	MISSED APPROACH: Climb to 5000 via MIB TACAN R-112 direct AMIRE and hold.
* When AIS inop, increase CAT DDE vis to 1/2 miles. ** Circling not authorized N of Rwy 12-30.		AITS * 278.8	MINOT APP CON 119.6 363.8	MINOT TOWER * 120.65 253.5
		GND CON 134.0 275.8	CINC DEL 326.2	



NC-1, 22 FEB 2024 to 21 MAR 2024

EMERG SAFE ALT 100 NM 4700

AMAKE
MIB R-305
15

ISAXE
MIB
63

5000
MIB
R-112

AMIRE
MIB
15

5000
MIB
R-112

GAVGE
MIB
13

TACAN
MIB
15

2.57°
TCH 47

4.8 NM

0.6 NM

CATEGORY	C	D	E
S-12*	2100/40	434 (500-2)	
S-12*	2180-1/2	2220-2 554 (600-2)	

CIRCLING ** 514 (600-1/2)

MINOT, NORTH DAKOTA

Orig 21JUL16

48°25'N-101°21'W

MINOT AFB (KMIB)
1769
1776
TMR
125°10 TACAN
13.128 2800
1776
1769
A1 P P P

HIL Rwy 12-30

A1

P

ELEV	1666	TDZE	1666
------	------	------	------

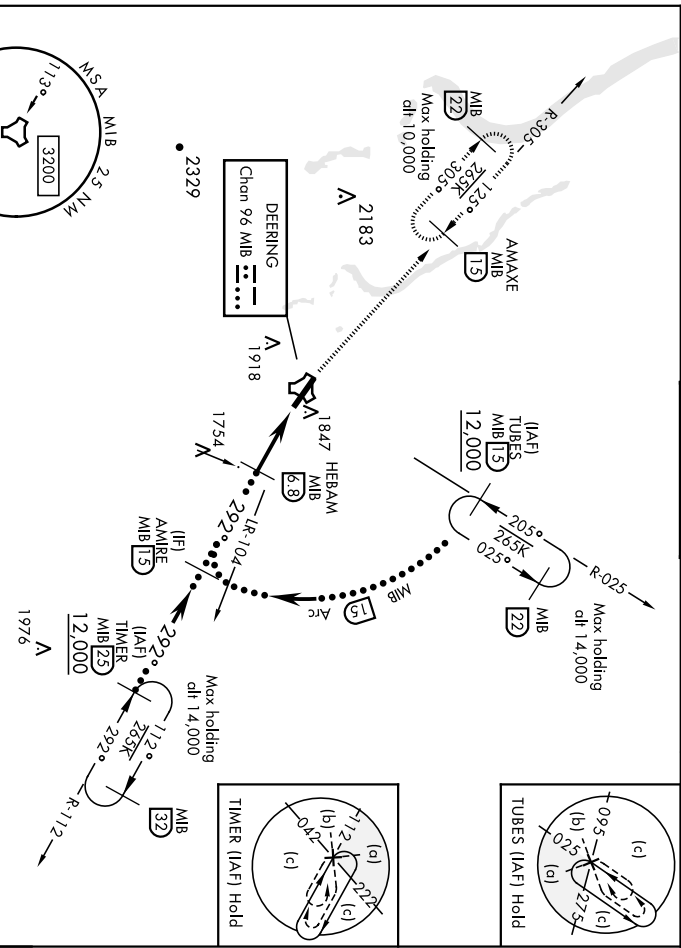


HI-TACAN Z RWY 30

MINOT AFB (KMIB)

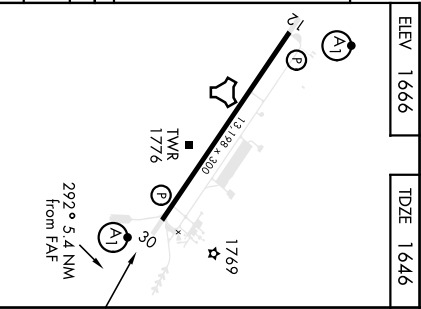
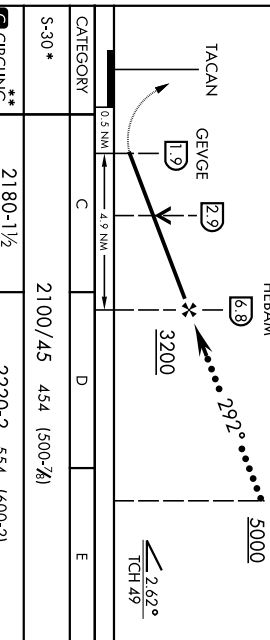
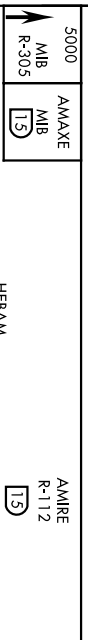
TACAN MIB Chan 96	APCH CRS 292°	Rwy Idg TDZE Appr Elev	13,198 1646 1666	JAL-5013 (USAF)	ALSF-1 A1	MISSED APPROACH: Climb to 5000 via MIB TACAN R-305 direct AMAXE and hold.
ATIS *	MINOT APP CON	MINOT TOWER *	GND CON	CINC DEL		
278.8	119.6 363.8	120.65 253.5	134.0 275.8	326.2		

* When ALS inop, increase CAT CDE vis to 1 3/8 miles.
** Circling not authorized N of Rwy 12-30.



ELEV	1666
TDZE	1646

EMERG SAFE ALT 100 NM 4700



S-30 *
CATEGORY
CIRCLING **
MINOT, NORTH DAKOTA
Orig 21JUL16

2100/45 454 (500-76)
2180-1 1/2 514 (600-1 1/2)
2220-2 554 (600-2)
MINOT AFB (KMIB)
HIRL Rwy 12-30
292° 5.4 NM from FAF

LOC F-MW	APCH CRS	Rwy Idg	13,198
<u>109.9</u>	118°	TDZE	1666
		Appt Elev	1666

AL-5013 [USAF]

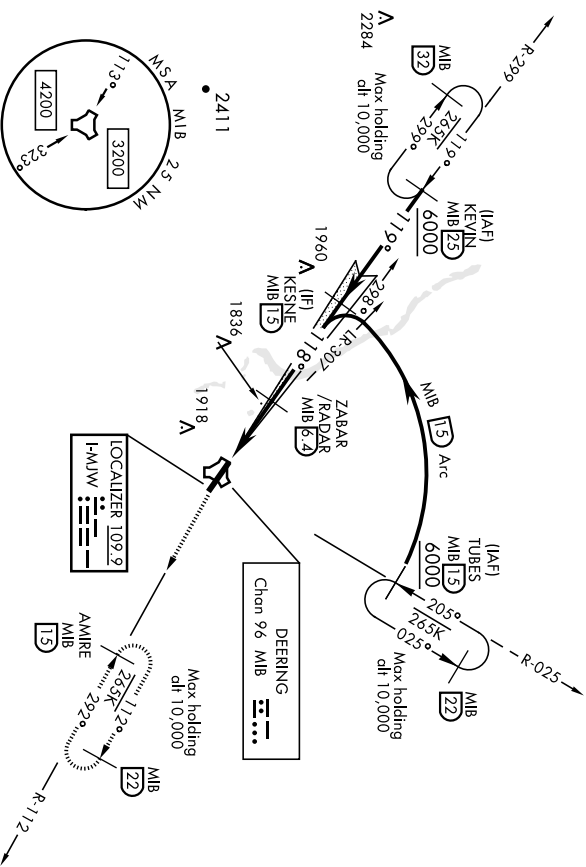
MINOT AFB (KMIB)

ATIS *	MINOT APP CON	MINOT TOWER *	MINOT APP CON	GND CON	CINC DEL
278.8	119.6 363.8	120.65 253.5	134.0 275.8	326.2	

*** Circling not authorized N of Rwy 12-30.

ALSF-1
A1

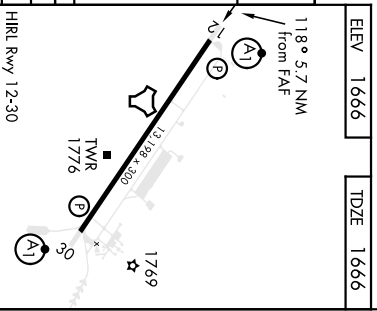
MISSED APPROACH: Climb to 5000 via MIB TACAN R-112 direct AMIRE and hold.



RADAR or DME REQUIRED

EMERG SAFE ALT 100 NM 4700

CATEGORY	A	B	C	D	E
	1866/24 200 (200-½)				
SILS 12*	2100/24 434 (500-½)				
S-LOC 12**	2100/40 434 (500-¾)				
CIRCLING ***	2120-1	2140-1	2180-1½	2220-2	554 (600-2)
	454 (500-1)	474 (500-1)	514 (600-1½)		

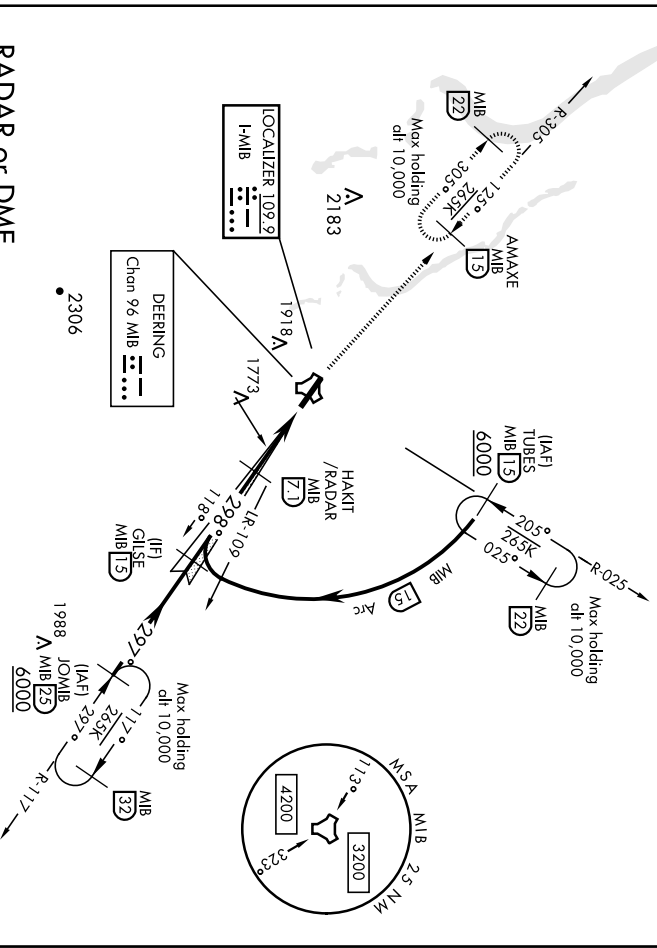


HIRL Rwy 12-30	FAF to MAP 5.1 NM				
	Knots	60	90	120	150 180
Mins:Sec	5:06	3:24	2:33	2:02	1:42

LOC I-MIB	APCH CRS	Rwy Idg	13 198	AL-501.3 [USAF]	ALSF-1	MISSED APPROACH: Climb to 5000 via MIB TACAN R-305 direct AMAXE and hold.
<u>109.9</u>	298°	TDZE	1646		A1	
		Appl Elev	1666			
ATIS *	MINOT APP CON	MINOT TOWER *	120.65 253.5	GND CON CON	CINC DEL	
278.8	119.6 363.8			134.0 275.8	326.2	

***Circling not authorized N of Rwy 12-30.

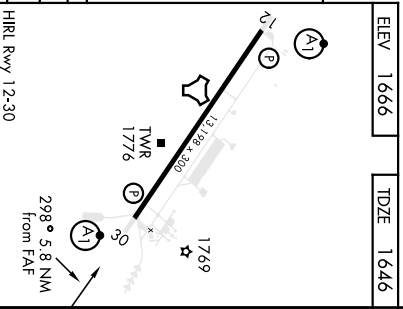
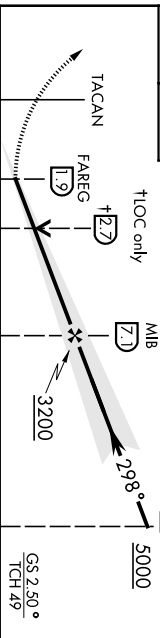
NC-1, 22 FEB 2024 to 21 MAR 2024



RADAR or DME REQUIRED

EMERG SAFE ALT 100 NM 4700

5000	AMAXE	GLISE
MIB	R-305	R-117
15	15	15



MINOT, NORTH DAKOTA

RNAV (GPS) Y RWY 12

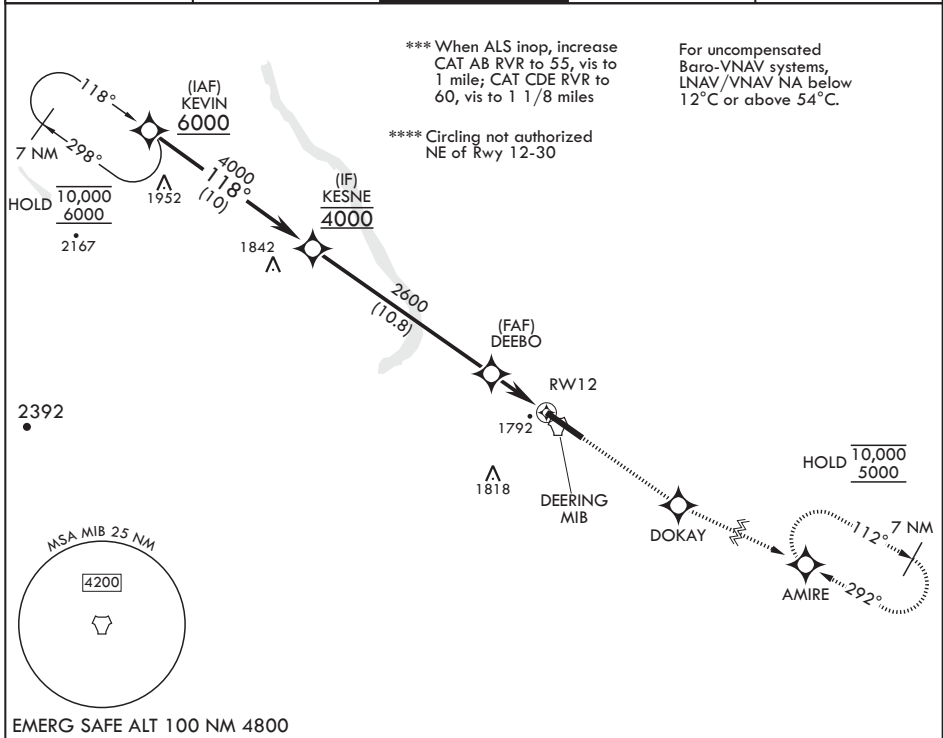
WAAS CH 51051 W12B	APCH CRS 118°	Rwy ldg THRE 13,198 Arpt Elev 1666
--------------------------	------------------	--

AL-5013 (USAF)

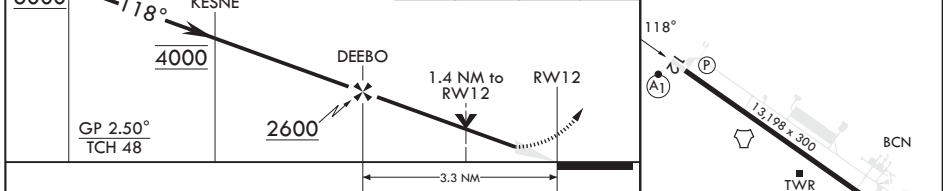
MINOT AFB (KMIB)

RNP APCH-GPS	ALSF-1	MISSED APPROACH: Climb to 5000 direct DOKAY, track 108° to AMIRE and hold.
<p>▼ * When ALS inop, increase RVR to 40, vis to 3/4 mile. ** When ALS inop, increase RVR to 60, vis to 1 1/8 miles.</p>		

ATIS ★ 278.8	APP CON 119.6 363.8	TOWER ★ 120.65 253.5	GND CON 134.0 275.8	CLNC DEL 326.2
-----------------	------------------------	-------------------------	------------------------	-------------------



KEVIN 6000	KESNE 4000	DEEBO 2600	5000	DOKAY	tr 108°	AMIRE	ELEV 1666	THRE 1666
---------------	---------------	---------------	------	-------	---------	-------	-----------	-----------



CATEGORY	A	B	C	D	E
LPV DA*	1866/24		200	(200-1/2)	
LNAV/VNAV DA**	2057/35		391	(400-5/8)	
LNAV MDA***	2080/24	414 (500-1/2)	2080/40	414	(500-3/4)
☐ CIRCLING****	2120-1 454 (500-1)	2140-1 474 (500-1)	2180-1 1/2 514 (600-1 1/2)	2320-2 654 (700-2)	2320-2 1/4 654 (700-2 1/4)

HIRL all Rwys

MINOT, NORTH DAKOTA
Orig 15JUN23

48°25'N - 101°21'W

MINOT AFB (KMIB)

RNAV (GPS) Y RWY 12

NC-1, 22 FEB 2024 to 21 MAR 2024

NC-1, 22 FEB 2024 to 21 MAR 2024

MINOT, NORTH DAKOTA

RNAV (GPS) Y RWY 30

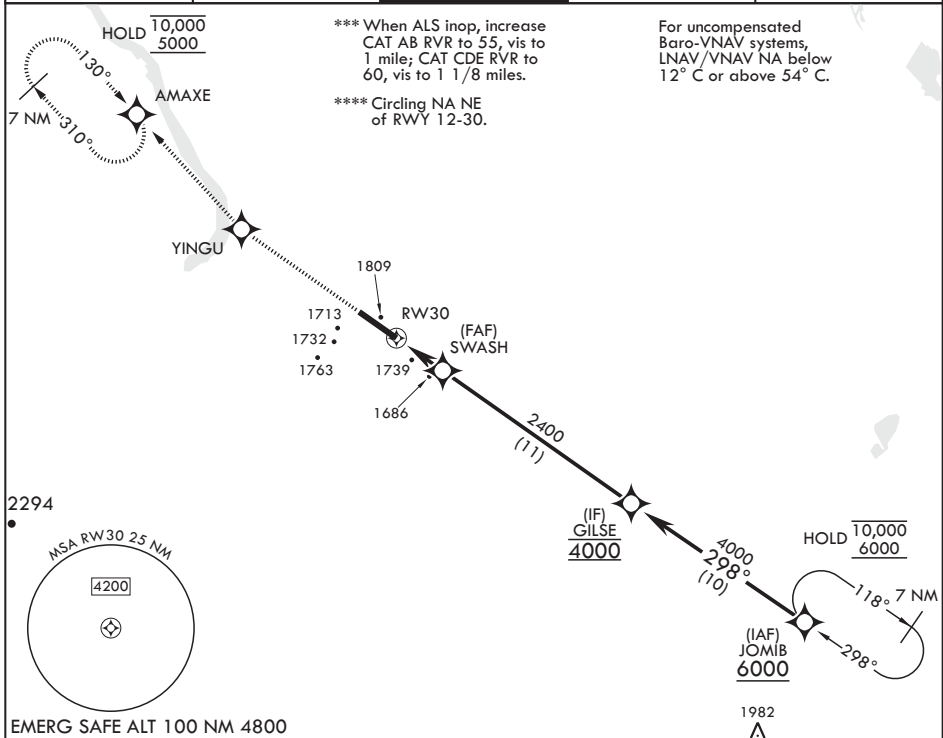
WAAS CH 47084 W30B	APCH CRS 298°	Rwy ldg TDZE Arprt Elev	13,198 1646 1666
--------------------------	------------------	-------------------------------	------------------------

AL-5013 (USAF)

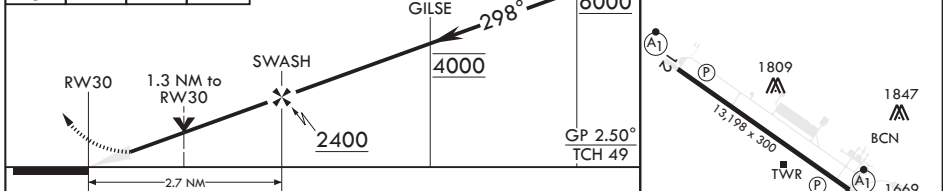
MINOT AFB (KMIB)

RNP APCH - GPS	ALSF-1	MISSED APPROACH: Climb to 5000 direct YINGU, track 310° to AMAXE and hold.
* When ALS inop, increase RVR to 40, vis to 3/4 mile. ** When ALS inop, increase RVR to 60, vis to 1 1/8 miles.		

ATIS* 278.8	APP CON 119.6 363.8	TOWER* 120.65 253.5	GND CON 134.0 275.8	CLNC DEL 326.2
----------------	------------------------	------------------------	------------------------	-------------------



5000	YINGU	tr 310°	AMAXE	JOMIB	ELEV 1666	TDZE 1646
------	-------	---------	-------	-------	-----------	-----------



CATEGORY	A	B	C	D	E
LPV DA*	1846/24		200	(200-1/2)	
LNAV/VNAV DA**	2027/35		381	(400-5/8)	
LNAV MDA***	2040/24 394 (400-1/2)		2040/40	394 (400-3/4)	
CIRCLING****	2120-1	2140-1	2180-1 1/2	2320-2	2320-2 1/4
	454 (500-1)	474 (500-1)	514 (600-1 1/2)	654 (700-2)	654 (700-2 1/4)



MINOT, NORTH DAKOTA

48°25'N - 101°21'W

MINOT AFB (KMIB)

Orig 15JUN23

RNAV (GPS) Y RWY 30

NC-1, 22 FEB 2024 to 21 MAR 2024

NC-1, 22 FEB 2024 to 21 MAR 2024

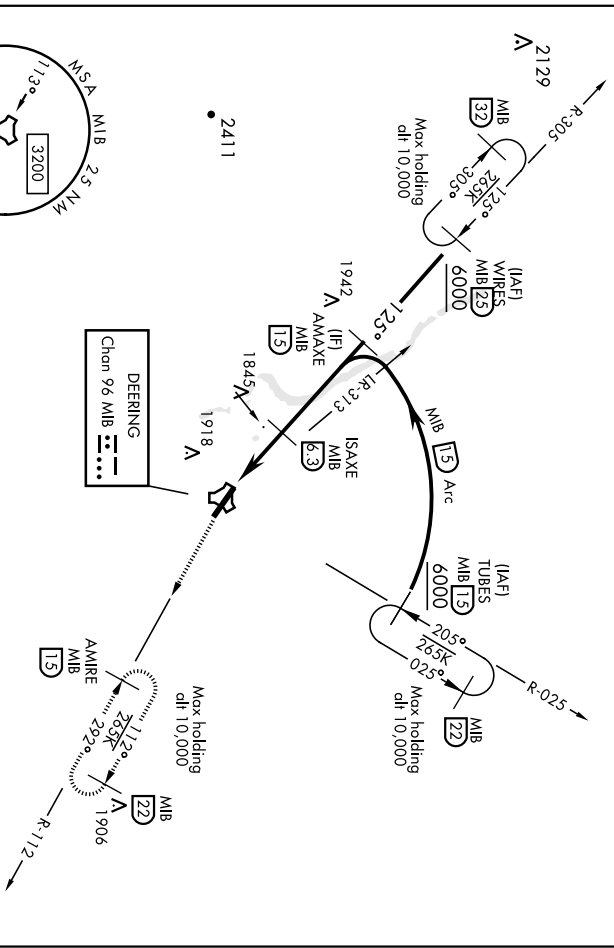
MINNOT, NORTH DAKOTA

TACAN Y RWY 12

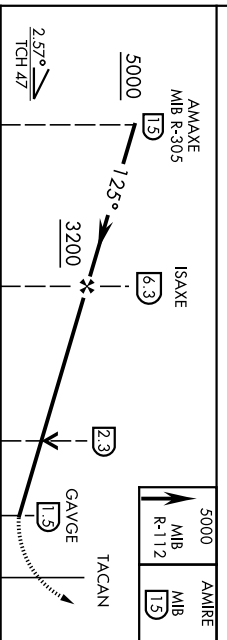
1922Z

TACAN MIB Chan 96	APCH CRS 125°	Pub. Idg TDZE 1666 Arpt Elev. 1666	AL-5013 [USAF]	MINNOT AFB (KMIB)
* When ALS Inop., increase CAT AB RVR to 55 vis to 1 mile, CAT CDE vis to 1 1/2 miles.			ALSF-1	MISSED APPROACH: Climb to 5000 via MIB TACAN R-112 direct AMIRE and hold.
** Circling not authorized N of Rwy 12-30.			(A1)	

ATIS *	MINNOT APP CON	MINNOT TOWER *	GND CON	CINC DEL
278.8	119.6 363.8	120.65 253.5	134.0 275.8	326.2

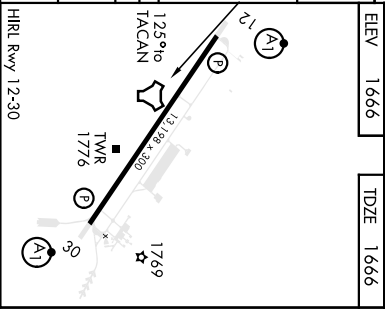


EMERG SAFE ALT 100 NM 4700



CATEGORY	A	B	C	D	E
S-12*	2100/24 434 (500-1/2)	2100/40 434 (500-3/2)			

CIRCLING**	2120-1 454 (500-1)	2140-1 474 (500-1)	2180-1 1/2 514 (600-1 1/2)	2220-2 554 (600-2)
	MINOT, NORTH DAKOTA			



MINOT, NORTH DAKOTA 48°25'N-101°21'W

MINNOT AFB (KMIB)

TACAN Y RWY 12

Orig 21JUL16

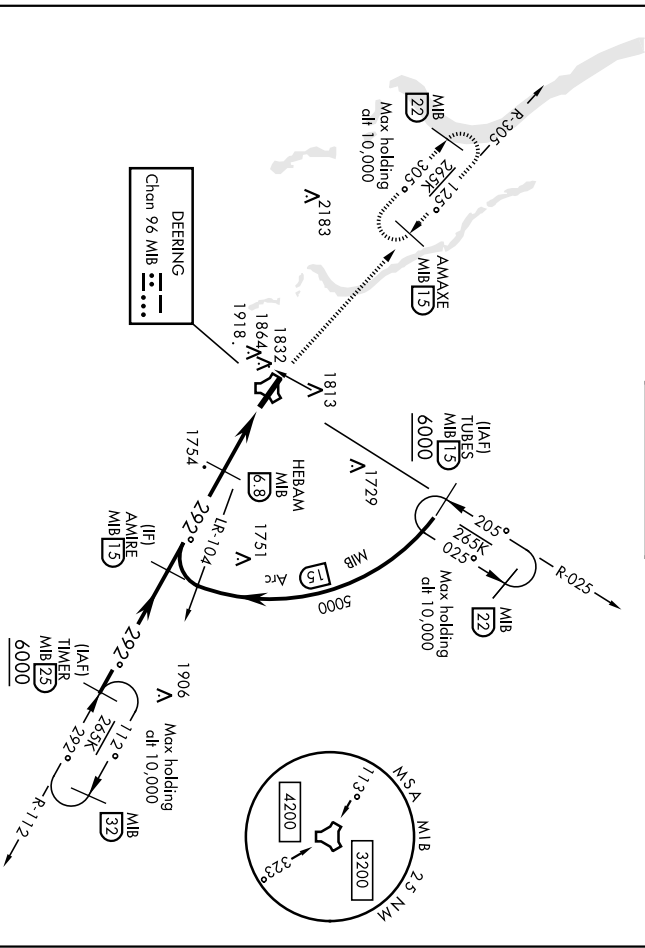
MINOT, NORTH DAKOTA

TACAN Y RWY 30

19227

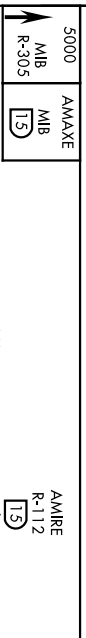
MINOT AFB (KMIB)

TACAN MIB Chan 96	APCH CRS 292°	Rwy Idg TDZE Appt Elev 13 198 1646 1666	AL-501.3 [USAF]	ALSF-1 (A1)	MISSED APPROACH: Climb to 5000 via MIB TACAN R-305 direct AMAXE and hold.	GND CON 134.0 275.8	CINC DEL 326.2
ATIS * 278.8	MINOT APP CON 119.6 363.8	MINOT TOWER * 120.65 253.5					

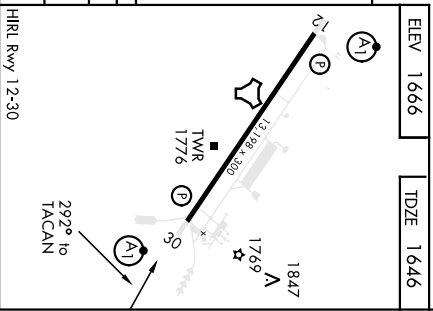


NC-1, 22 FEB 2024 to 21 MAR 2024

EMERG SAFE ALT 100 NM 4700



CATEGORY	A		B		C		D		E	
	2100/24	454 (500-1/2)	2100/45	454 (500-2/8)	2180-1 1/2	2220-2	554 (600-2)			
5-30 *										
** CIRCLING	2120-1	2140-1	2180-1 1/2	2220-2	554 (600-2)					
	454 (500-1)	474 (500-1)	514 (600-1 1/2)							



NC-1, 22 FEB 2024 to 21 MAR 2024

MINOT, NORTH DAKOTA
Orig 21 JUL 16

48° 25' N - 101° 21' W

MINOT AFB (KMIB)

TACAN Y RWY 30