

WAAS CH <b>82517</b> <b>W12A</b>	APP CRS <b>120°</b>	Rwy Idg TDZE <b>413</b> Apt Elev <b>425</b>
--	------------------------	---

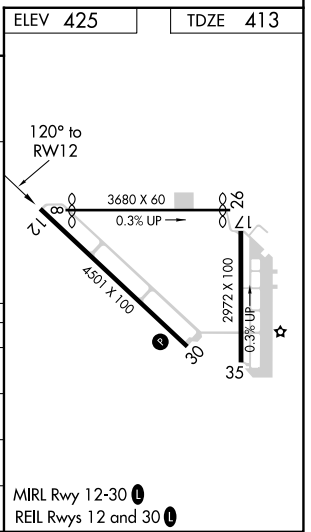
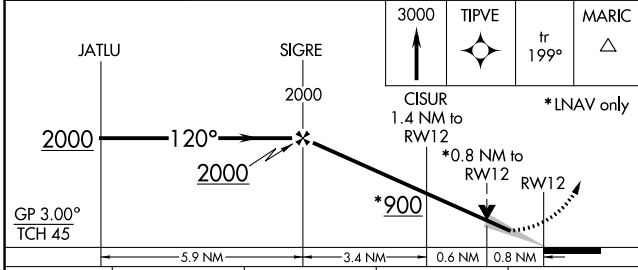
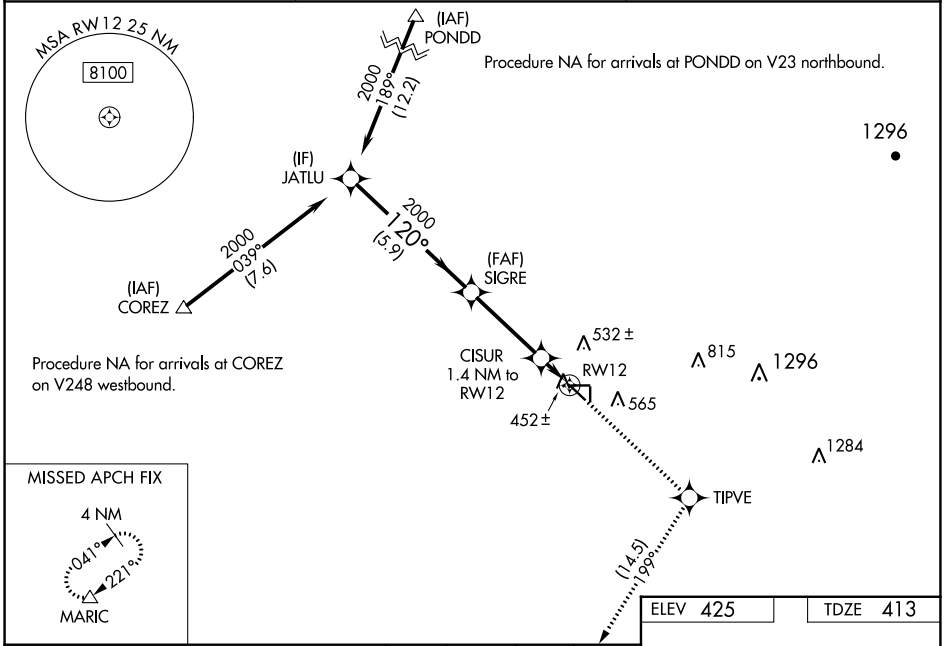
# RNAV (GPS) RWY 12

SHAFTER-MINTER FLD (MIT)

**NA** Baro-VNAV NA when using Bakersfield altimeter setting. For uncompensated Baro-VNAV systems, LNAV/VNAV NA below -15°C (5°F) or above 54°C (130°F).  
 When local altimeter setting not received, use Bakersfield altimeter setting and increase LPV and LNAV/VNAV DA to 694 feet and LNAV/VNAV visibility to 7/8 all Cats; increase all MDA 40 feet. DME/DME RNP-0.3 NA.  
 Night Landing Rwy 17, 35, 8, 26 NA.

MISSED APPROACH: Climb to 3000 direct TIPVE and on track 199° to MARIC and hold.

AWOS-3 <b>121.125</b>	BAKERSFIELD APP CON ★ <b>126.45 270.3</b>	CTAF <b>122.9</b>
--------------------------	--	----------------------



CATEGORY	A	B	C	D
LPV DA	663-3/4	250 (300-3/4)		NA
LNAV/VNAV DA	663-3/4	250 (300-3/4)		NA
LNAV MDA	740-1	327 (300-1)		NA
CIRCLING	900-1	475 (500-1)	940-1 1/2 515 (600-1 1/2)	NA

SW-3, 22 FEB 2024 to 21 MAR 2024

SW-3, 22 FEB 2024 to 21 MAR 2024

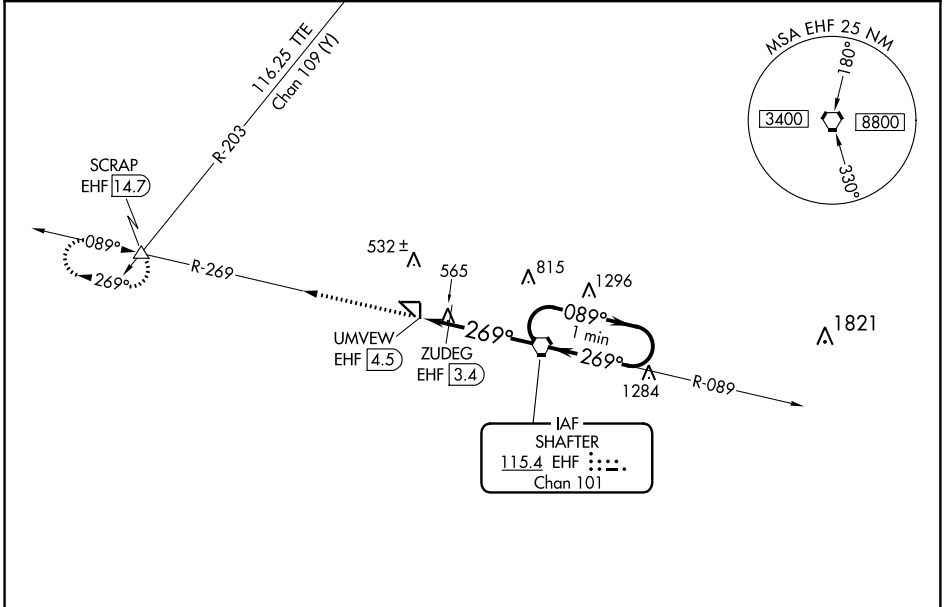
VORTAC EHF <b>115.4</b> Chan <b>101</b>	APP CRS <b>269°</b>	Rwy Idg TDZE Apt Elev	<b>N/A</b> <b>N/A</b> <b>425</b>
---	------------------------	-----------------------------	--

**VOR-A**  
SHAFTER-MINTER FLD (MIT)

**⚠ NA** Circling to Rwy 17, 35, 8 and 26 NA at night. When local altimeter setting not received, use Bakersfield altimeter setting and increase all MDAS 40 feet and increase Cat C visibility to 1 3/4.

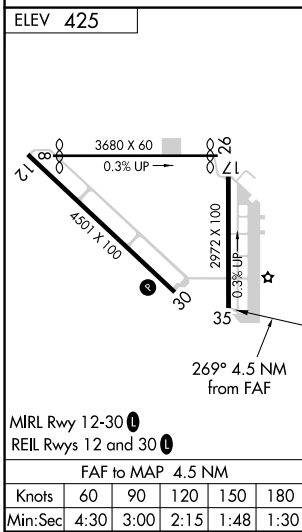
MISSED APPROACH: Climb to 4000 on EHF VORTAC R-269 to SCRAP INT/EHF 14.7 DME and hold, continue climb-in-hold to 4000.

AWOS-3 <b>121.125</b>	BAKERSFIELD APP CON * <b>126.45 270.3</b>	CTAF <b>122.9</b>
--------------------------	--	----------------------



SW-3, 22 FEB 2024 to 21 MAR 2024

SW-3, 22 FEB 2024 to 21 MAR 2024



4000	SCRAP	One Minute Holding Pattern			
EHF R-269	ZUDEG EHF 3.4	EHF VORTAC	2900		
UMVEW EHF 4.5	2600	089°	269°		
1000*	1.1 NM	3.4 NM	*1040 when using Bakersfield altimeter setting.		
CATEGORY	A	B	C	D	
CIRCLING	1000-1	575 (600-1)	1000-1 1/2	575 (600-1 1/2) NA	
ZUDEG FIX MINIMUMS					
CIRCLING	900-1	475 (500-1)	940-1 1/2	515 (600-1 1/2) NA	