

APP CRS	Rwy Idg	3799
043°	TDZE	77
	Apt Elev	78

RNAV (GPS) RWY 4

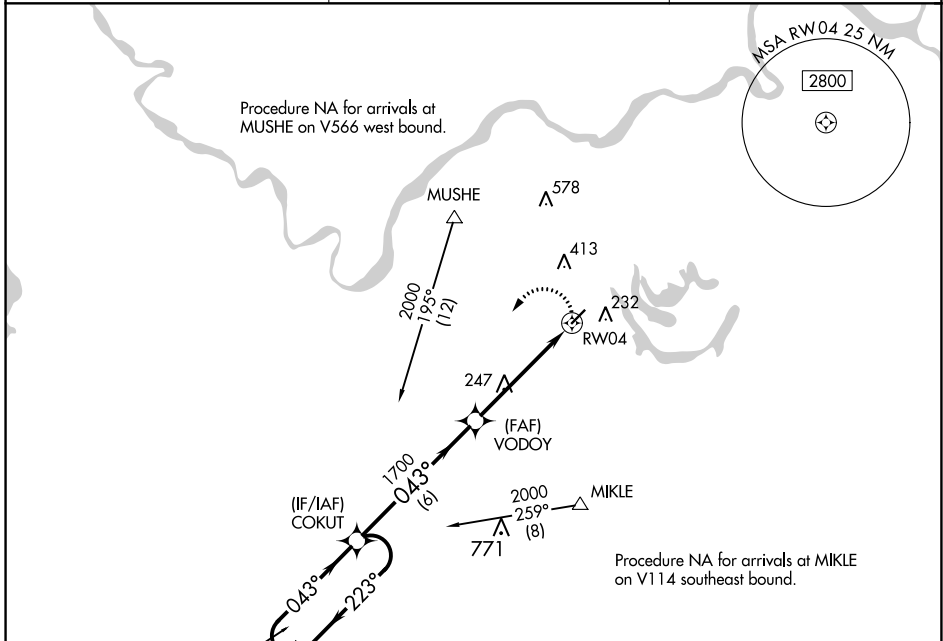
MARKSVILLE MUNI (MKV)

RNP APCH - GPS.

NA Circling Rwy 22 NA at night. Use Esler Rgnl altimeter setting. When not received, use Alexandria Intl. Rwy 4 helicopter visibility reduction below 3/4 SM NA.

MISSED APPROACH: Climbing left turn to 2000 direct COKUT and hold.

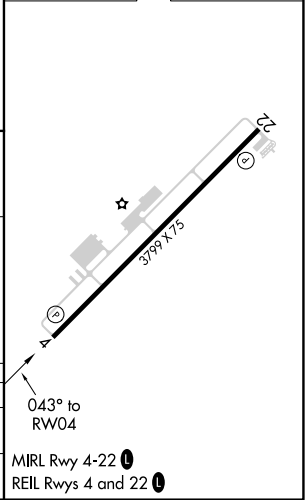
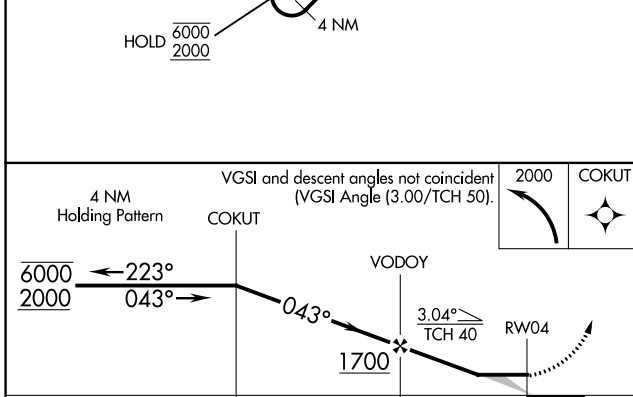
ESF ASOS 119.425	POLK APP CON 125.4 302.2	CTAF 122.9 0
----------------------------	------------------------------------	------------------------



SC-4, 22 FEB 2024 to 21 MAR 2024

SC-4, 22 FEB 2024 to 21 MAR 2024

ELEV 78	TDZE 77
---------	---------



CATEGORY	A	B	C	D
LNAV MDA	680-1	603 (700-1)	NA	
C CIRCLING	760-1 682 (700-1)	820-1 742 (800-1)	NA	

VORTAC AEX 116.1 Chan 108	APP CRS 110°	Rwy Idg TDZE Apt Elev 79	N/A N/A
---	------------------------	--	--------------------------

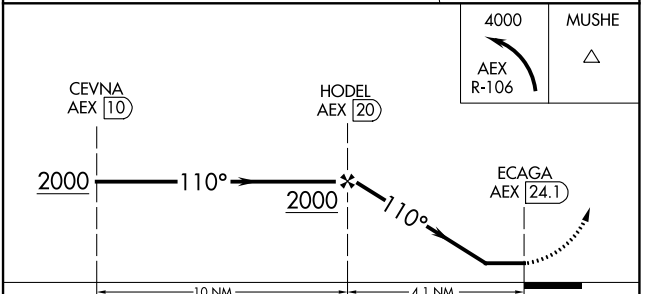
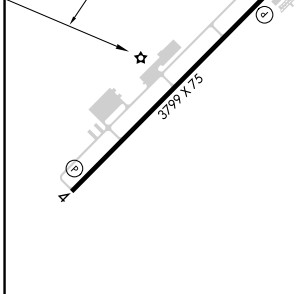
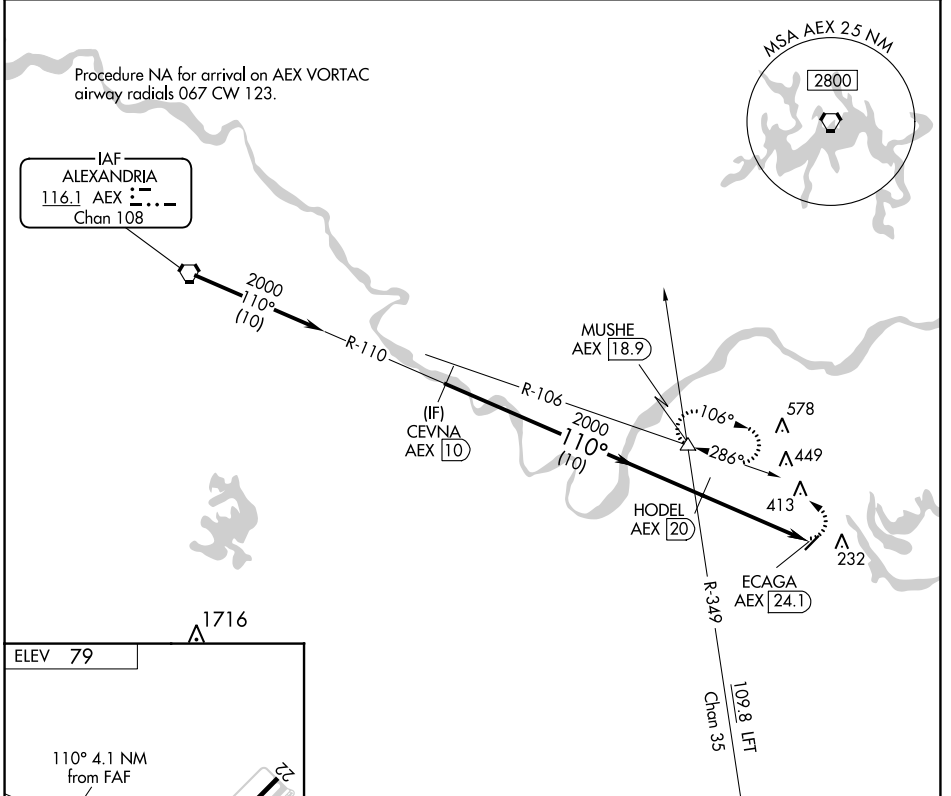
VOR-A
MARKSVILLE MUNI (MKV)

DME required.

NA Circling Rwy 22 NA at night. Use Esler Rgnl altimeter setting.
When not received, use Alexandria Intl altimeter setting.

MISSED APPROACH: Climbing left turn to 4000 on AEX VORTAC R-106 to MUSHE INT/AEX 18.9 DME and hold, continue climb-in-hold to 4000.

ESF ASOS 119,425	POLK APP CON 125.4 302.2	CTAF 122.9
----------------------------	------------------------------------	----------------------



MIRL Rwy 4-22	REIL Rwy 4 and 22	CEVNA AEX 10	HODEL AEX 20	ECAGA AEX 24.1
MARKSVILLE, LOUISIANA	Amdt 4A 25FEB21	31°06'N-92°04'W	MARKSVILLE MUNI (MKV)	VOR-A

SC-4, 22 FEB 2024 to 21 MAR 2024

SC-4, 22 FEB 2024 to 21 MAR 2024