

APP CRS	Rwy Idg	2578
242°	TDZE	7
	Apt Elev	7

RNAV (GPS) RWY 24

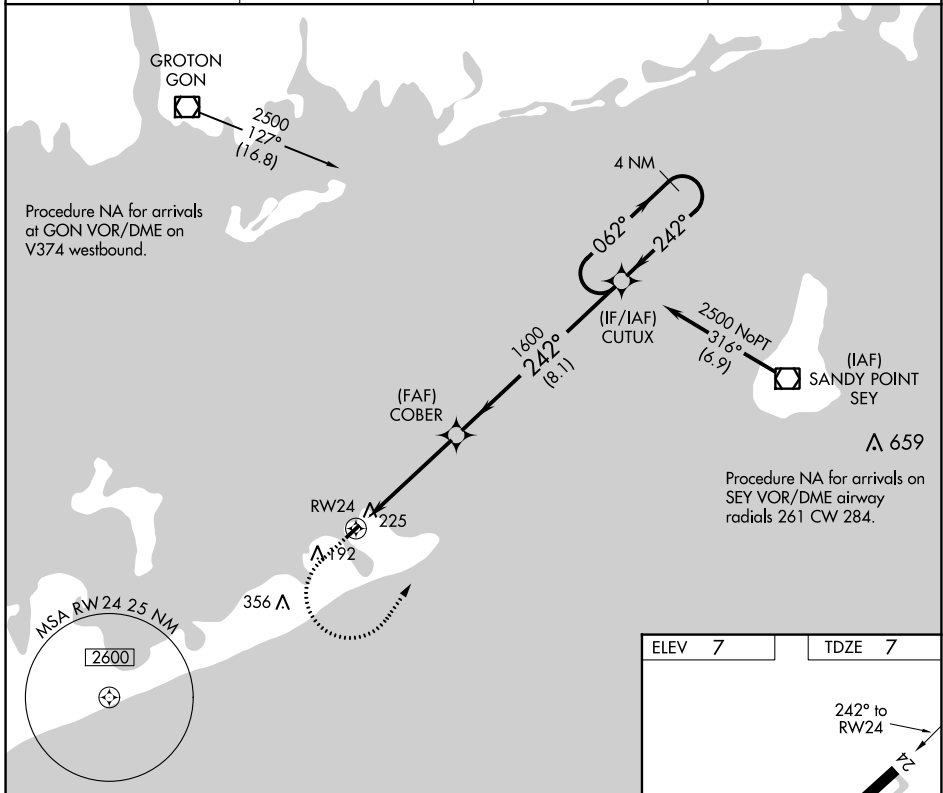
MONTAUK (MTP)

RNP APCH - GPS

▼ Helicopter visibility reduction below 1 SM NA. Use Groton-New London altimeter setting; when not received, use Block Island State altimeter setting: increase all MDA 20 feet and visibility LNAV Cats C and D 1/8 SM and Circling Cats D 1/4 SM. Procedure NA at night.
▲ NA

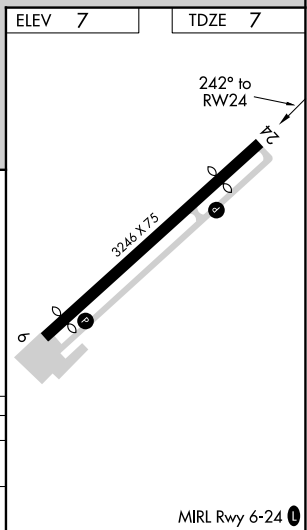
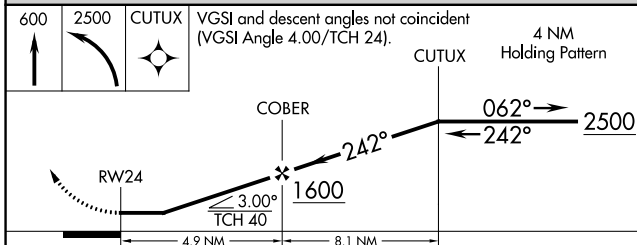
MISSED APPROACH:
 Climb to 600 then climbing left turn to 2500 direct CUTUX and hold.

GON ASOS 127.0	NEW YORK APP CON 125.975 343.65	UNICOM 122.7 (CTAF)	121.7 0
--------------------------	---	-------------------------------	----------------



NE-2, 22 FEB 2024 to 21 MAR 2024

NE-2, 22 FEB 2024 to 21 MAR 2024



CATEGORY	A	B	C	D
LNAV MDA	520-1	513 (600-1)	520-1 3/8	513 (600-1 3/8)
CIRCLING	580-1	573 (600-1)	580-1 1/2 573 (600-1 1/2)	740-2 1/4 733 (800-2 1/4)

MIRL Rwy 6-24 0

APP CRS	Rwy Idg	2944
062°	TDZE	6
	Apt Elev	7

RNAV (GPS) RWY 6

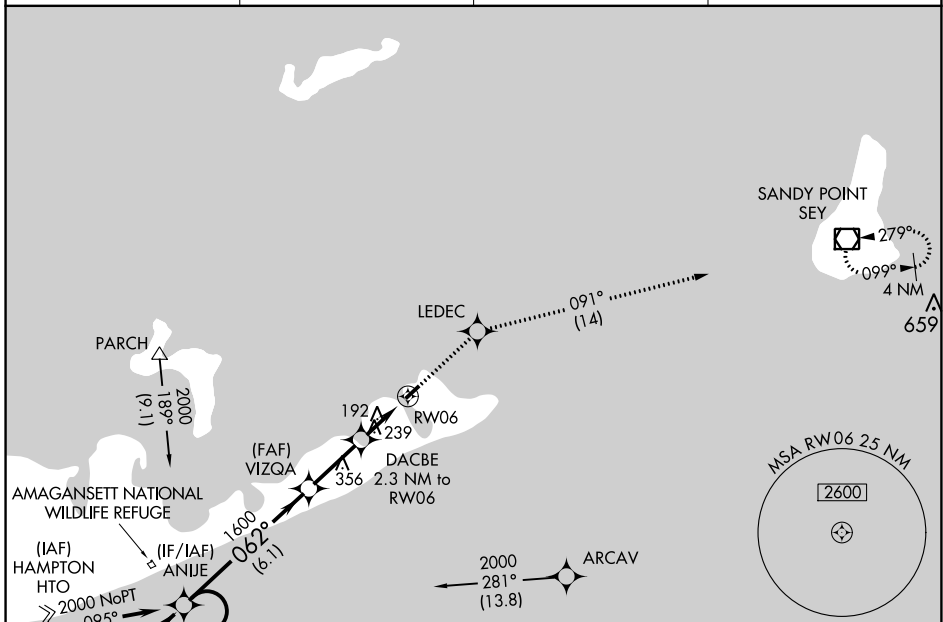
MONTAUK (MTP)

RNP APCH - GPS.

▼ Use Graton-New London altimeter setting; when not received, use Block Island State altimeter setting; increase all MDA 20 feet and visibility LNAV Cats C and D 1/8 SM and Circling Cat D 1/4 SM. Procedure NA at night. Helicopter visibility reduction below 1 SM NA.

▲ MISSED APPROACH: Climb to 2000 direct LEDEC and on track 091° to SEY VOR/DME and hold.

GON ASOS 127.0	NEW YORK APP CON 125.975 343.65	UNICOM 122.7 (CTAF)	121.7 0
--------------------------	---	-------------------------------	----------------

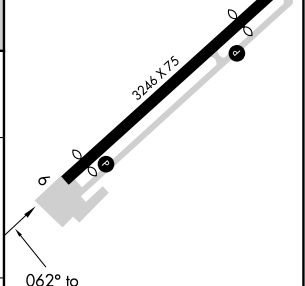
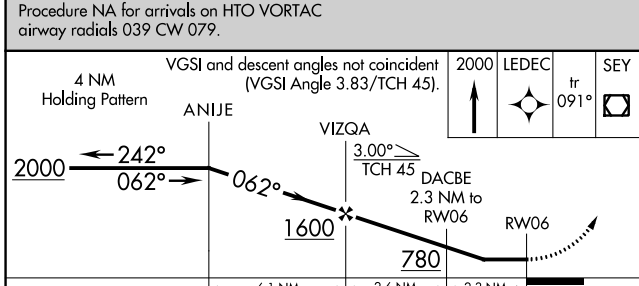


NE-2, 22 FEB 2024 to 21 MAR 2024

NE-2, 22 FEB 2024 to 21 MAR 2024

Procedure NA for arrivals on HTO VORTAC airway radials 039 CW 079.

ELEV 7	TDZE 6
--------	--------



CATEGORY	A	B	C	D
LNAV MDA	540-1	534 (600-1)	540-1½	534 (600-1½)
CIRCLING	580-1	573 (600-1)	580-1½ 573 (600-1½)	740-2¼ 733 (800-2¼)

MIRL Rwy 6-24 0