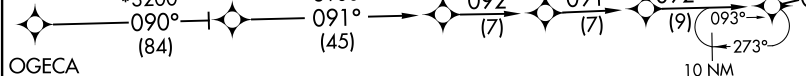


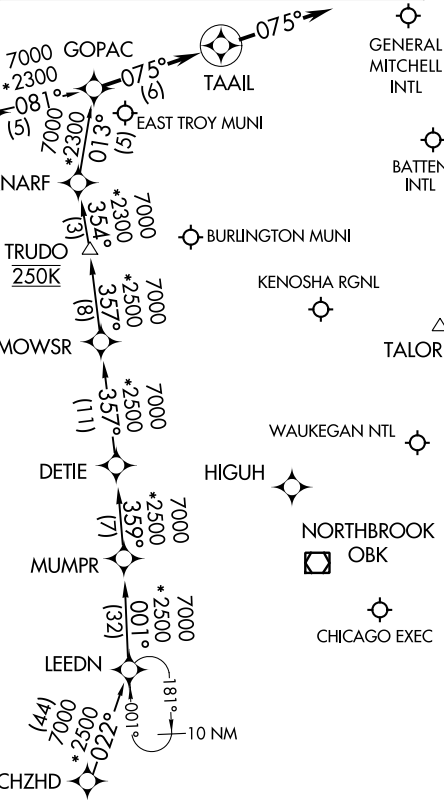
GOPAC THREE ARRIVAL (RNAV)  
 (GOPAC.GOPAC3) 15JUN23

MILWAUKEE APP CON  
 126.5 307.0  
 ENW ATIS  
 127.175  
 MKE D-ATIS  
 126.4  
 MWC ATIS  
 128.3  
 PWK ATIS  
 124.2  
 UES ATIS  
 118.875  
 UGN ATIS  
 132.4

RNAV 1 - DME/DME/IRU OR GPS.  
 RADAR required.



HARTFORD MUNI  
 WAUKESHA COUNTY  
 WEST BEND MUNI  
 LAWRENCE J TIMMERMAN  
 Ldg KRAC, KBUU, KPWK, 57C, KMKE, KHXF, KENW, KMWC, KUGN, KUES, and KETB.



NOTE: Landing KUGN, expect RADAR vectors to final approach course.  
 NOTE: Landing KPWK, expect RADAR vectors to HIGUH, then to destination airport.

NOTE: Chart not to scale.

ARRIVAL ROUTE DESCRIPTION

CHZHD TRANSITION (CHZHD.GOPAC3):  
LEEDN TRANSITION (LEEDN.GOPAC3):  
OGECA TRANSITION (OGECA.GOPAC3):

LANDING ALL AIRPORTS: From GOPAC on track 075° to TAAIL, then on track 075°. Expect RADAR vectors to final approach course.

MILWAUKEE, WISCONSIN

GOPAC THREE ARRIVAL (RNAV)  
 (GOPAC.GOPAC3) 23166

AL-262 (FAA)

MILWAUKEE, WISCONSIN