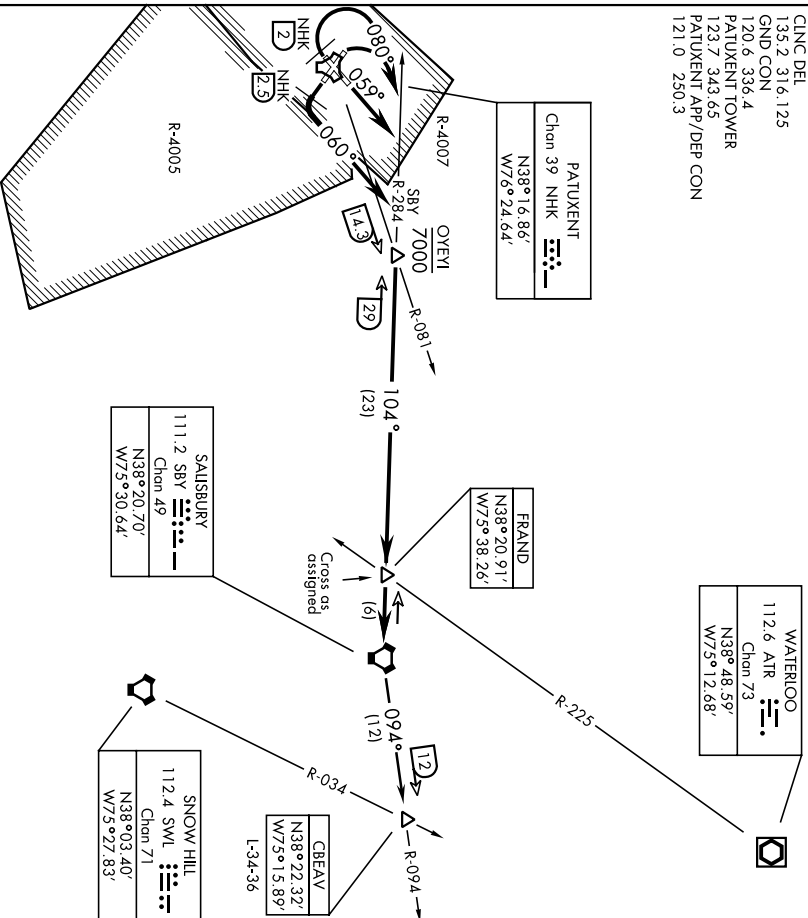


**SALSBURY-SIX DEPARTURE (SBY6.SBY)**

PATUXENT RIVER NAS (TRAPNELL FIELD) (KNHK)  
PATUXENT RIVER, MARYLAND

SHL-314 (USN)

ATIS 322.425  
CLNC DEL  
135.2 316.125  
GND CON  
120.6 336.4  
PATUXENT TOWER  
123.7 343.65  
PATUXENT APP/DEP CON  
121.0 250.3



Departure Rwy 2-20 not authorized.

**DEPARTURE ROUTE DESCRIPTION**

▼ **TAKE-OFF RWY 6:** Climb to 6000 to heading 059°, thence...

**TAKE-OFF RWY 14:** Climbing left turn to 6000 to heading 060° within NHK TACAN 2.5 DME, thence...

**TAKE-OFF RWY 24:** Climb on heading 239° to NHK TACAN 2 DME, then climbing right turn to 6000 to heading 080°, thence...

**TAKE-OFF RWY 32:** Climbing right turn to 6000 to heading 080°, thence...

Intercept SBY VORTAC R-284, then on SBY R-284 to SBY. Cross FRAND as assigned. Then on assigned route or transition...

**CBEAV TRANSITION (SBY6.CBEAV):** Then on SBY R-094 to CBEAV.

**SALSBURY-SIX DEPARTURE (SBY6.SBY)**

Amth 1 25MAY17

PATUXENT RIVER, MARYLAND  
PATUXENT RIVER NAS (TRAPNELL FIELD) (KNHK)

**SWABY-EIGHT DEPARTURE (SWABY8.SWABY)**

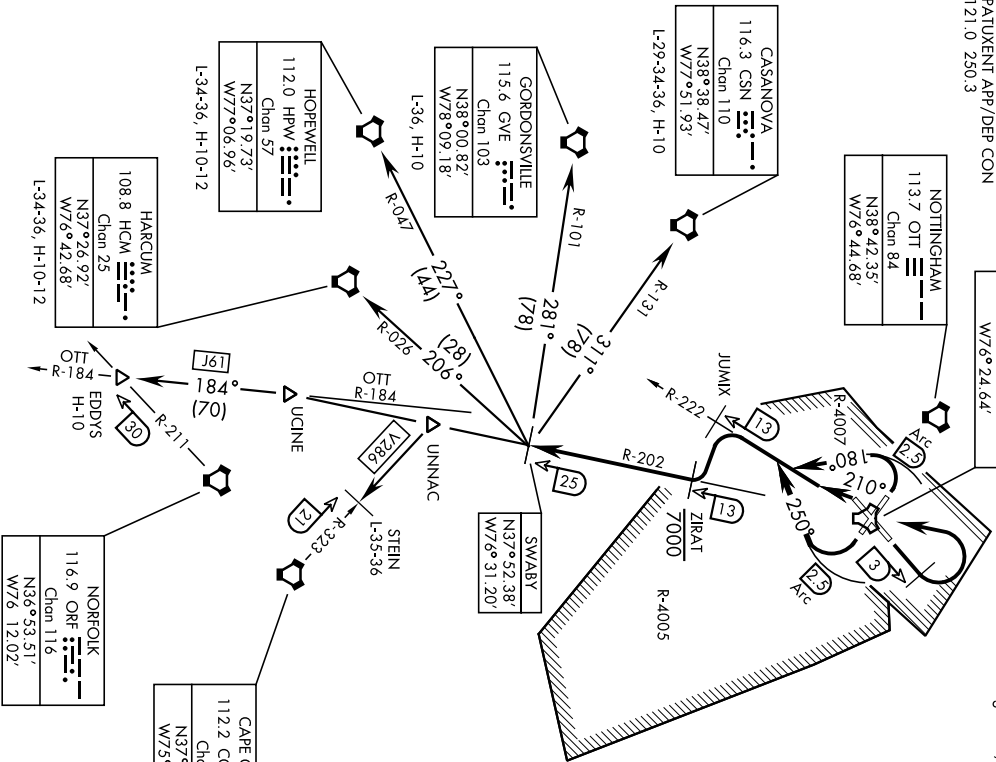
PATUXENT RIVER NAS (TRAPNELL FIELD) (KNHK)  
 SHL-31.4 [USN] PATUXENT RIVER, MARYLAND

Rwy	Knots	60	120	180	240	300	360
①	V/V(gpm)	602	1204	1806	2408	3010	3612

ATIS 322.425  
 CLNC DEL 135.2 316.125  
 GND CON 120.6 336.4  
 PATUXENT TOWER 123.7 343.65  
 PATUXENT APP/DEP CON 121.0 250.3

PATUXENT  
 Chon 39 NHK  
 N38°16.86'  
 W76°24.64'

ATC Climb Rate to 15,000.  
 Ⓞ EDDYS ins only  
 Departure Rwy 2-20 not authorized.  
 Minimum filing dh 10,000'.



**ATC BRIEF  
 REQUIRED**  
 135.2 316.125

**TACAN REQUIRED**

Note: Chart not to scale

**SWABY-EIGHT DEPARTURE (SWABY8.SWABY)**  
 Arr'd 1 25MAY17

PATUXENT RIVER, MARYLAND  
 PATUXENT RIVER NAS (TRAPNELL FIELD) (KNHK)

▼ DEPARTURE ROUTE DESCRIPTION

TAKEOFF RWY 6: Climb heading 059°, at NHK TACAN 3 DME turn left direct NHK to 3000, thence...

TAKE-OFF RWY 14: Climbing right turn to 3000 heading 250° within NHK TACAN 2.5 DME, intercept NHK R-222, thence...

TAKE-OFF RWY 24: Climbing left turn to 3000 heading 210°, intercept NHK TACAN R-222, thence...

TAKE-OFF RWY 32: Climbing left turn to 3000 heading 180°, intercept NHK TACAN R-222, thence...

...then on depicted route to the assigned transition or expect radar vectors. Cross ZIRAT at or below 7000.

CASANOVA TRANSITION (SWABY8.CSN): Then on CSN VORTAC R-131 to CSN.

EDDYS TRANSITION (SWABY8.EDDYS): Then on NHK R-202 to UGINE, then via OTT R-184 to EDDYS. Cross SWABY at or above 15,000.

GORDONSVILLE TRANSITION (SWABY8.GVE): Then on GVE VORTAC R-101 to GVE.

HARCUM TRANSITION (SWABY8.HCM): Then on HCM VORTAC R-026 to HCM.

HOWEVELL TRANSITION (SWABY8.HPW): Then on HPW VORTAC R-047 to HPW.

STEIN TRANSITION (SWABY8.STEIN): Then on NHK R-202 to UNNAC, then via CCV VORTAC R-323 to STEIN.